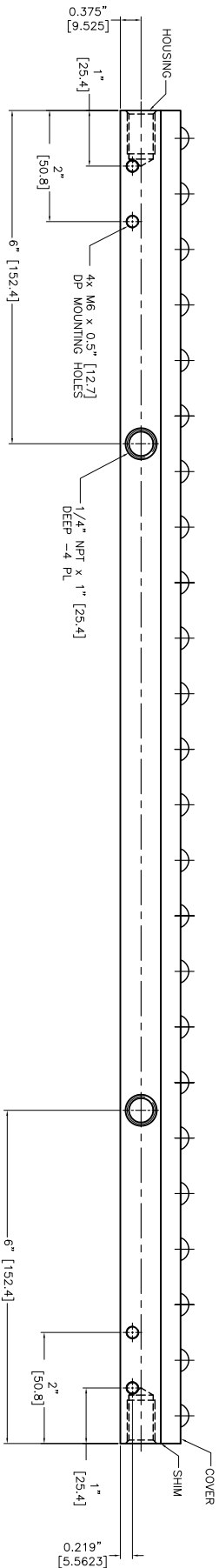
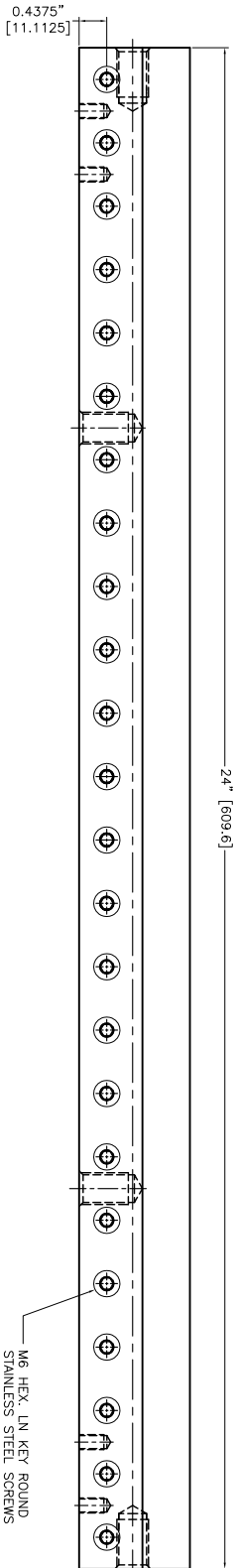
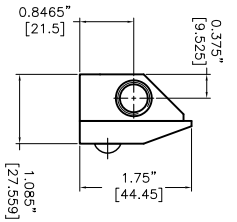


- NOTES:
- 1 ALL DIMENSIONS SHOWN ARE FINISH OPERATIONAL DIMENSIONS WHICH INCLUDE RESIDUAL COATINGS UNLESS OTHERWISE SPECIFIED.
  - 2 PART TO BE PACKED PROPERLY TO AVOID ANY DAMAGE WHILE SHIPPING & HANDLING.
  - 3 ALL HORIZONTAL DIMENSIONS ARE SYMMETRICAL ABOUT CENTER LINE UNLESS OTHERWISE SPECIFIED.



<b>THIRD ANGLE PROJECTION</b>		<b>SS 304</b>	
<b>MATERIAL</b>		<b>FINISH</b>	
SS 304		-	
<b>REQUIREMENTS - FINISHES</b> OTHERS AS SPECIFIED		<b>CONTRACT NUMBER</b>	
1. FINISH AS PER MANUFACTURER'S SPECIFICATIONS		-	
2. DIMENSIONS AND TOLERANCES IN ACCORDANCE WITH ANSI Y14.5 (1982)		<b>CLIENT</b>	
3. MACHINE FINISH 125 MICRO INCH RMS		-	
4. BREAK SHARP CORNERS .005 TO .015		<b>DATE</b>	
<b>LIMITS</b>		27/11/2013	
1. LINEAR DIMS:		<b>DESIGNER</b>	
.0005		AS SHOWN	
.001		<b>QA</b>	
.002		-	
.005		<b>MANUFACTURING</b>	
.010		-	
.015		<b>TESTING</b>	
.020		-	
.030		<b>ELECTRICAL</b>	
.040		-	
.050		<b>SCALE</b>	
.060		1:1	
.070		<b>CDR NO</b>	
.080		XAKS-24	
.090		<b>SIZE</b>	
.100		10024XS	
.110		<b>DATE CODE</b>	
.120		-	
.130		<b>DWG NO</b>	
.140		-	
.150		<b>RELIEF</b>	
.160		-	
.170		<b>REV</b>	
.180		-	
.190		<b>SHEET</b>	
.200		1 OF 1	

**NEX FLOW AIR PRODUCTS CORP.**  
 10520 YONCE STREET, UNIT 259-220 RICHMOND HILL, ON L4C 3C7  
 TEL: (416) 410-1313 & FAX: (416) 410-1806 [www.nex-flow.com](http://www.nex-flow.com)

**TITLE**  
 2" X-STREAM AIR BLADE DRAWING OF