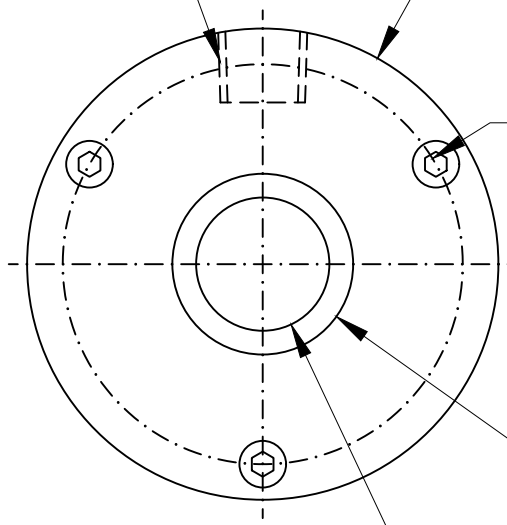


1/4" NPT
AIR INLET



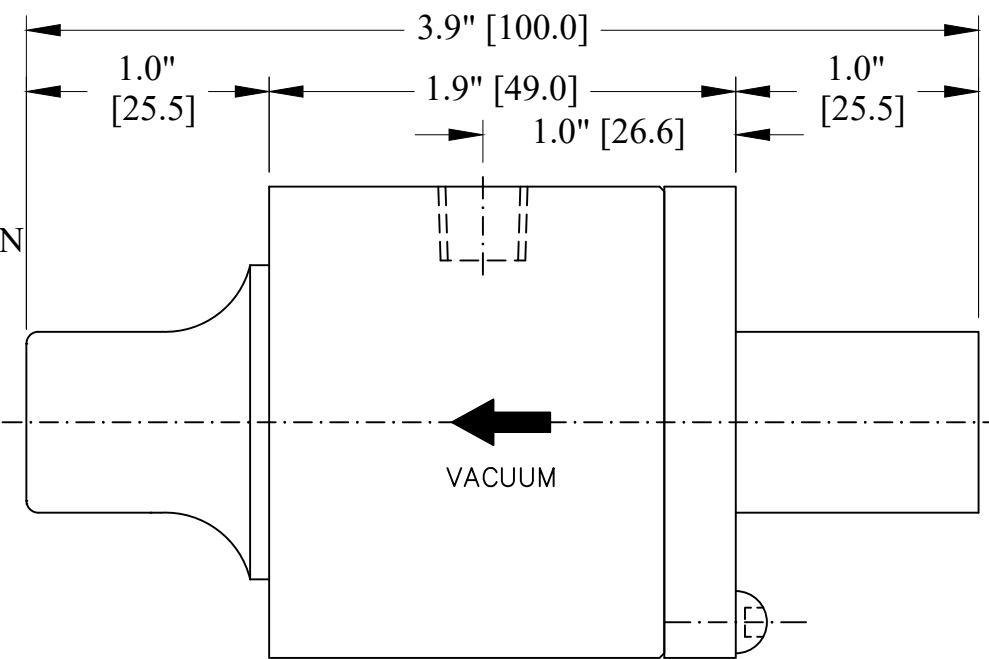
Ø1.9" [Ø49.5]

M4 X 3 HOLES ON
Ø1.7" [Ø42.0]
PCD

Ø0.7" [Ø19.0]

Ø0.6" [Ø14.0]

THRU. THROAT DIAMETER



1.0"
[25.5]

3.9" [100.0]

1.9" [49.0]

1.0" [26.6]

1.0"
[25.5]

VACUUM

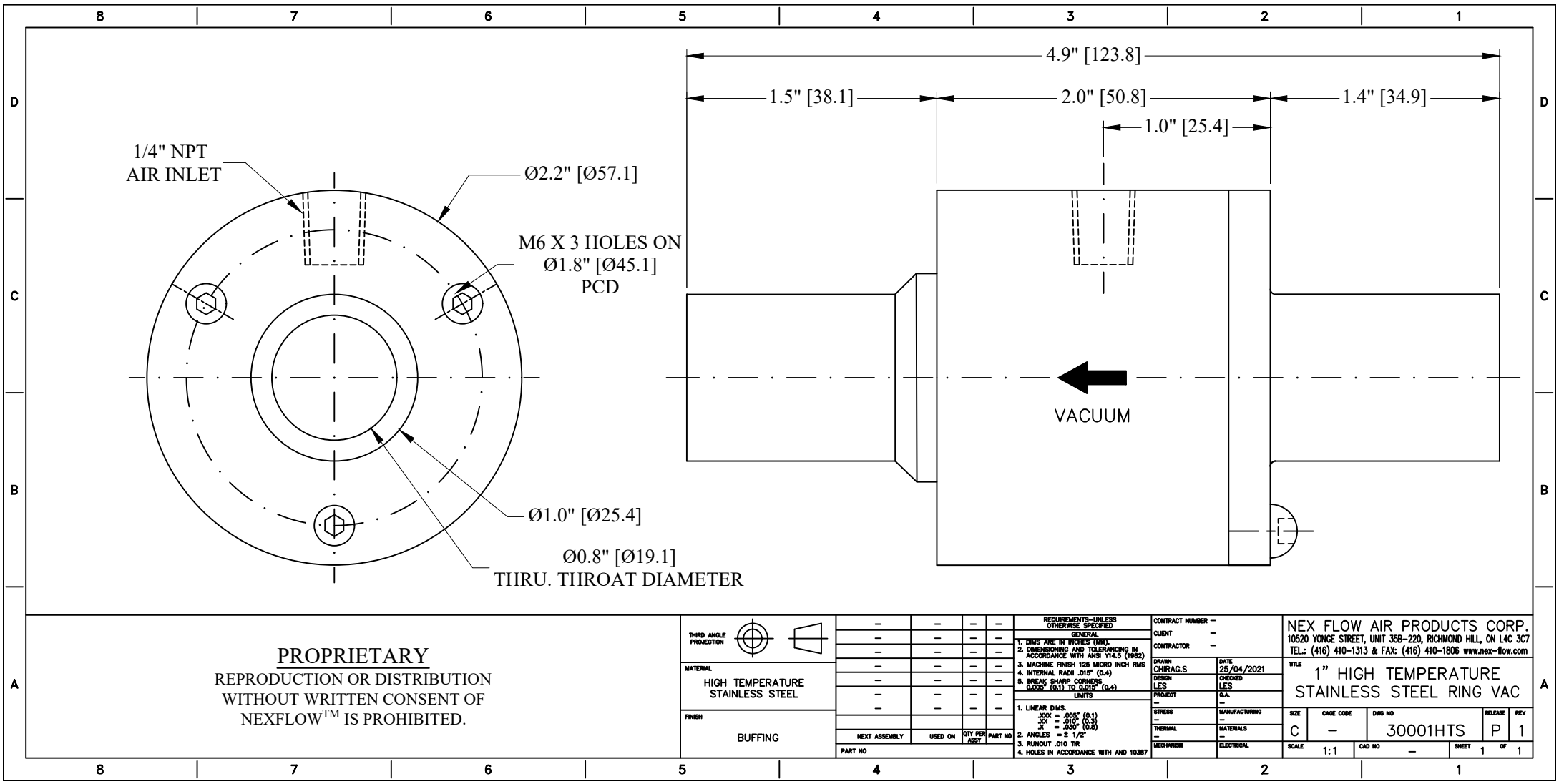
PROPRIETARY
REPRODUCTION OR DISTRIBUTION
WITHOUT WRITTEN CONSENT OF
NEXFLOW™ IS PROHIBITED.

THIRD ANGLE PROJECTION	
MATERIAL	HIGH TEMPERATURE STAINLESS STEEL
FINISH	BUFFING

REQUIREMENTS-UNLESS OTHERWISE SPECIFIED	CONTRACT NUMBER	-
GENERAL	CLIENT	-
1. DIMS ARE IN INCHES (MM)	CONTRACTOR	-
2. DIMENSIONING AND TOLERANCING IN ACCORDANCE WITH ANS Y14.5 (1982)	DATE	25/04/2021
3. MACHINE FINISH 125 MICRO INCH RMS	DESIGN	LES
4. INTERNAL RADI .015" (0.4)	LES	LES
5. BREAKS SHARP CORNERS 0.005" (0.1) TO 0.015" (0.4)	PROJECT	G.A.
LIMITS	STRESS	MANUFACTURING
1. LINEAR DIMS.	-	-
XXX = .005" (0.1)	TERMINAL	MATERIALS
XX = .010" (0.2)	-	-
X = .030" (0.8)	MATERIALS	ELECTRICAL
2. ANGLES = ± 1/2°	MECHANISM	-
3. ROUNDT .010 TIR	-	-
4. HOLES IN ACCORDANCE WITH AND 10387	-	-
PART NO	-	-

DESIGN	DATE	25/04/2021
LES	DESIGN	CHANGED
LES	LES	LES
PROJECT	G.A.	G.A.
STRESS	MANUFACTURING	-
TERMINAL	MATERIALS	-
MATERIALS	ELECTRICAL	-

NEX FLOW AIR PRODUCTS CORP. 10520 YONGE STREET, UNIT 35B-220, RICHMOND HILL, ON L4C 3C7 TEL: (416) 410-1313 & FAX: (416) 410-1806 www.nex-flow.com			
TITLE 3/4" HIGH TEMPERATURE STAINLESS STEEL RING VAC			
SIZE	CAGE CODE	DWG NO	RELEASE
C	-	30000HTS	P 1
SCALE	1:1	CAD NO	-
SHEET	1	OF	1



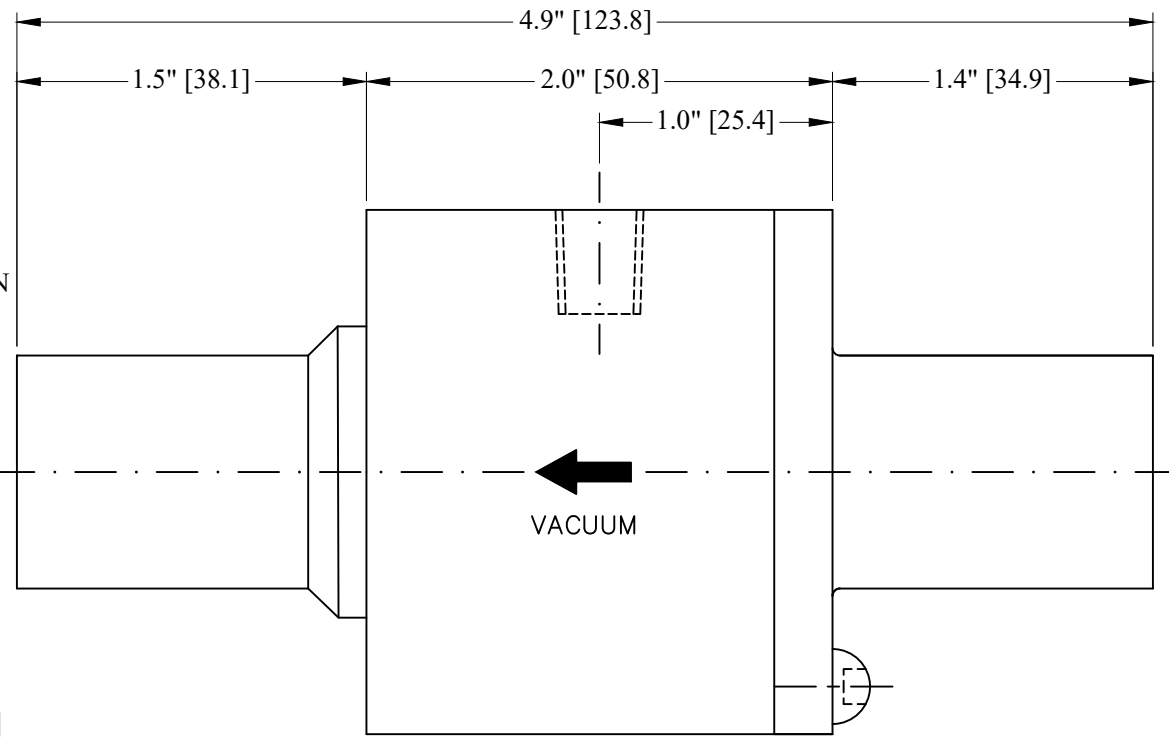
1/4" NPT
AIR INLET

Ø2.2" [Ø57.1]

M6 X 3 HOLES ON
Ø1.8" [Ø45.1]
PCD

Ø1.0" [Ø25.4]

Ø0.8" [Ø19.1]
THRU. THROAT DIAMETER



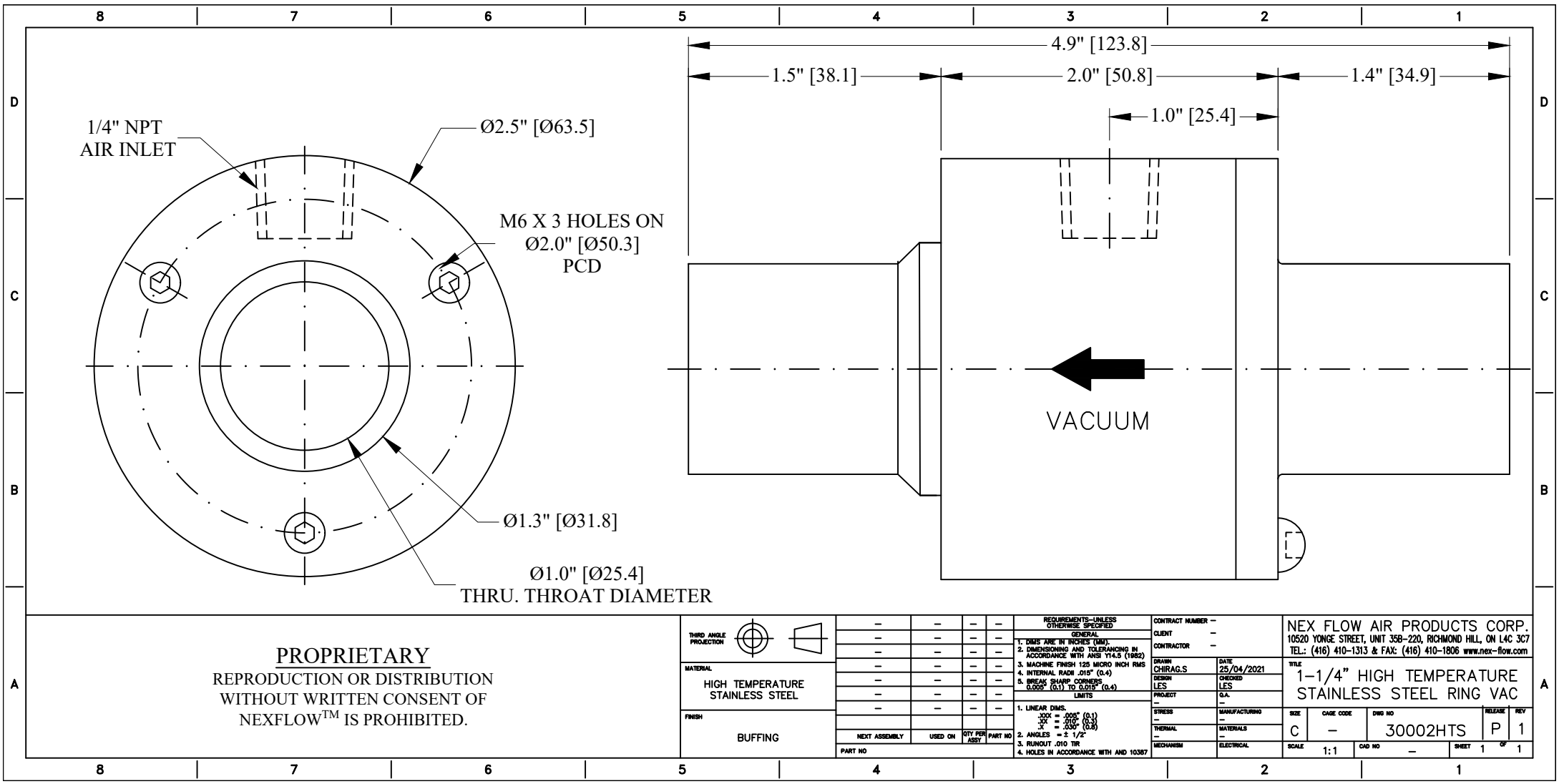
VACUUM

PROPRIETARY
REPRODUCTION OR DISTRIBUTION
WITHOUT WRITTEN CONSENT OF
NEXFLOW™ IS PROHIBITED.

THIRD ANGLE PROJECTION					
MATERIAL	HIGH TEMPERATURE STAINLESS STEEL				
FINISH	BUFFING				

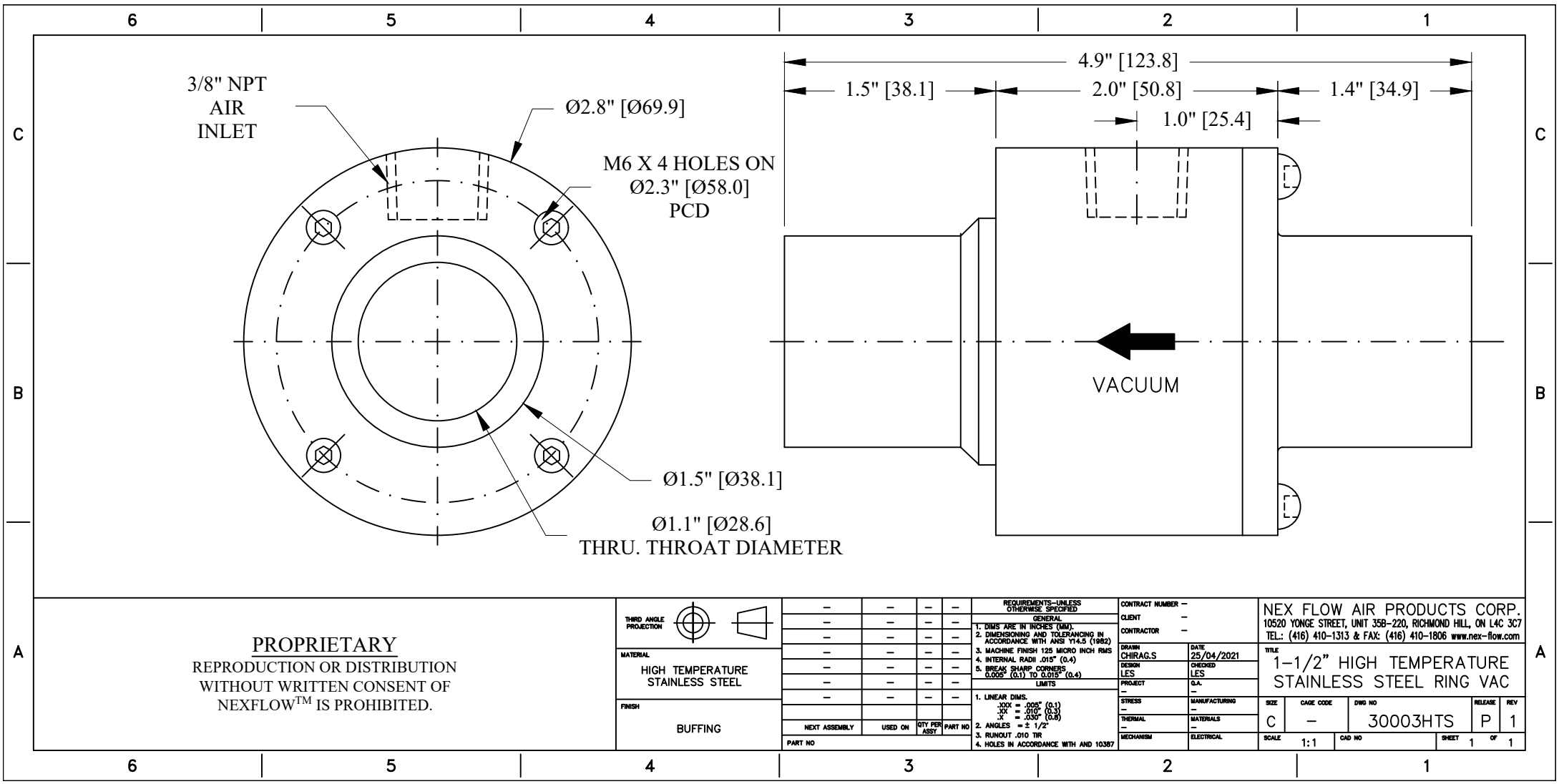
REQUIREMENTS—UNLESS OTHERWISE SPECIFIED	CONTRACT NUMBER	—
GENERAL	CLIENT	—
1. DIMS ARE IN INCHES (DIM.)	CONTRACTOR	—
2. DIMENSIONING AND TOLERANCING IN ACCORDANCE WITH ANSI Y14.5 (1982)	DATE	25/04/2021
3. MACHINE FINISH 125 MICRO INCH RMS	DESIGN	LES
4. INTERNAL RADI .015" (0.4)	PROJECT	—
5. BREAKS SHARP CORNERS .005" (0.1) TO .015" (0.4)	STRESS	—
LIMITS	MANUFACTURING	—
1. LINEAR DIMS.	THERMAL	—
.100" = .005" (0.1)	MATERIALS	—
.1" = .010" (0.2)	MECHANISM	ELECTRICAL
.050" = .002" (0.05)		
2. ANGLES = ± 1/2°		
3. ROUNDT. Ø10 TIR		
4. HOLES IN ACCORDANCE WITH AND 10387		

NEX FLOW AIR PRODUCTS CORP. 10520 YONGE STREET, UNIT 35B-220, RICHMOND HILL, ON L4C 3C7 TEL: (416) 410-1313 & FAX: (416) 410-1806 www.nex-flow.com			
TITLE		1" HIGH TEMPERATURE STAINLESS STEEL RING VAC	
SIZE	CAGE CODE	DWG NO	RELEASE
C	—	30001HTS	P 1
SCALE	1:1	CAD NO	SHEET 1 OF 1



PROPRIETARY
 REPRODUCTION OR DISTRIBUTION
 WITHOUT WRITTEN CONSENT OF
 NEXFLOW™ IS PROHIBITED.

THIRD ANGLE PROJECTION	REQUIREMENTS—UNLESS OTHERWISE SPECIFIED				CONTRACT NUMBER —		NEX FLOW AIR PRODUCTS CORP. 10520 YONGE STREET, UNIT 35B-220, RICHMOND HILL, ON L4C 3C7 TEL.: (416) 410-1313 & FAX: (416) 410-1806 www.nex-flow.com	
	GENERAL				CLIENT —			
MATERIAL	1. DIMS ARE IN INCHES (MM)				CONTRACTOR —		DRAWN	
	2. DIMENSIONING AND TOLERANCING IN ACCORDANCE WITH ANSI Y14.5 (1982)				DESIGN		DATE	
FINISH	3. MACHINE FINISH 125 MICRO INCH RMS				LES		25/04/2021	
	4. INTERNAL RADI .015" (0.4)				PROJECT		G.A.	
BUFFING	5. BREAKS SHARP CORNERS .005" (0.1) TO .015" (0.4)				STRESS		MANUFACTURING	
	LIMITS				THERMAL		MATERIALS	
NEXT ASSEMBLY		USED ON	QTY PER ASY	PART NO	MECHANISM		ELECTRICAL	SIZE
PART NO				1. LINEAR DIMS. XXX = .005" (0.1) XX = .010" (0.2) X = .030" (0.8)		TITLE		SCALE
				2. ANGLES = ± 1/2°		1-1/4" HIGH TEMPERATURE STAINLESS STEEL RING VAC		1:1
				3. FINISH: 010 TIR		C		CAGE CODE
				4. HOLES IN ACCORDANCE WITH AND 10387		30002HTS		DWG NO
						P		REV
						1		SHEET 1 OF 1



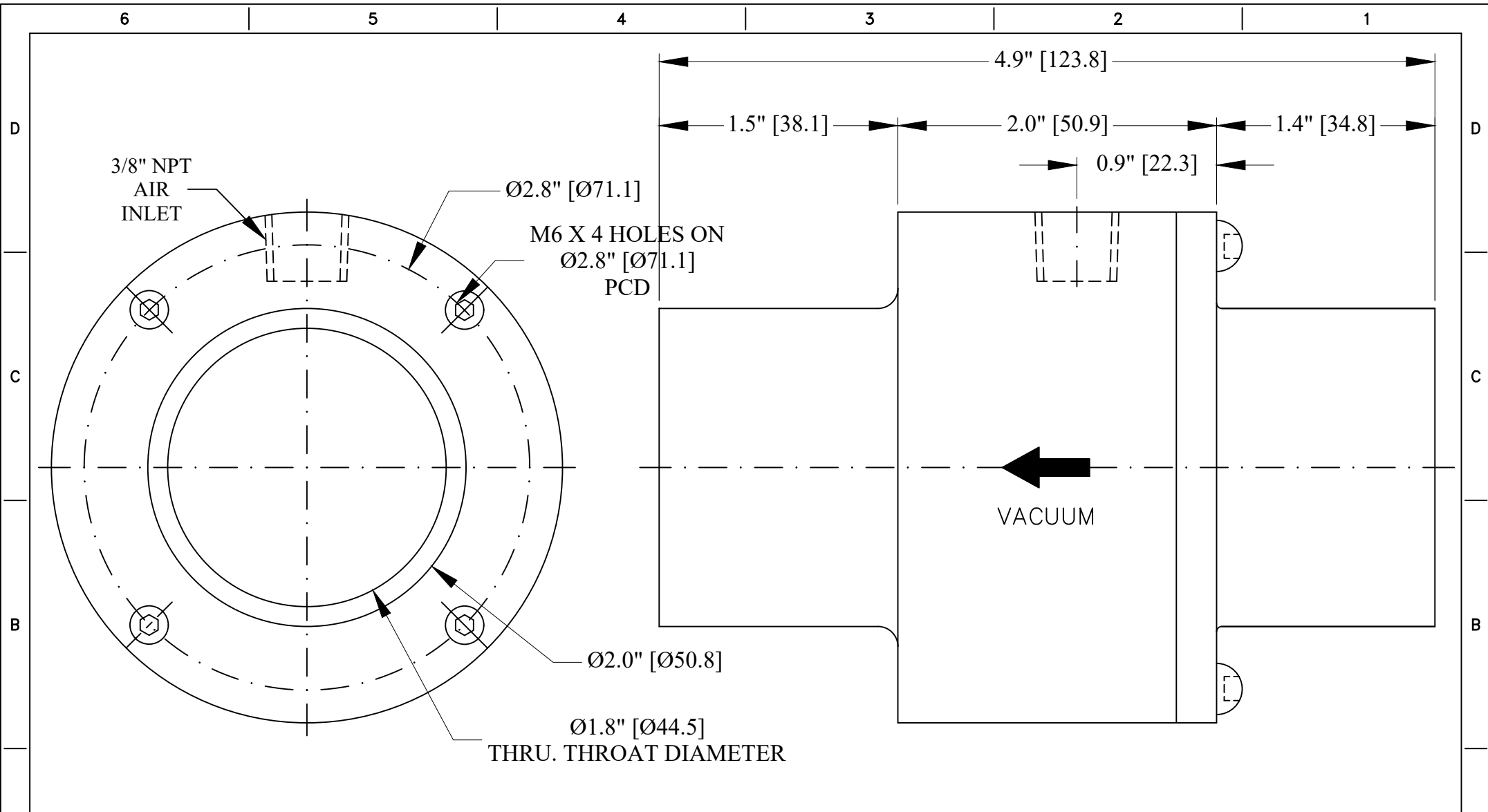
PROPRIETARY
 REPRODUCTION OR DISTRIBUTION
 WITHOUT WRITTEN CONSENT OF
 NEXFLOW™ IS PROHIBITED.

THIRD ANGLE PROJECTION					
MATERIAL	HIGH TEMPERATURE STAINLESS STEEL				
FINISH	BUFFING				
NEXT ASSEMBLY	USED ON	QTY PER ASSY	PART NO		

REQUIREMENTS—UNLESS OTHERWISE SPECIFIED				
GENERAL				
1. DIMS ARE IN INCHES (MM)				
2. DIMENSIONING AND TOLERANCING IN ACCORDANCE WITH ANSI Y14.5 (1982)				
3. MACHINE FINISH 125 MICRO INCH RMS				
4. INTERNAL RADII .015" (0.4)				
5. BREAK SHARP CORNERS 0.005" (0.1) TO 0.015" (0.4)				
LIMITS				
1. LINEAR DIMS.				
XXX = .005" (0.1)				
XX = .010" (0.2)				
X = .030" (0.8)				
2. ANGLES = ± 1/2°				
3. RUNOUT .010 TIR				
4. HOLES IN ACCORDANCE WITH AND 103B7				

CONTRACT NUMBER	
CLIENT	
CONTRACTOR	
DRAWN	DATE
CHRAGS	25/04/2021
DESIGN	CHECKED
LES	LES
PROJECT	G.A.
STRESS	MANUFACTURING
THERMAL	MATERIALS
MECHANISM	ELECTRICAL

NEX FLOW AIR PRODUCTS CORP. 10520 YONGE STREET, UNIT 358-220, RICHMOND HILL, ON L4C 3C7 TEL.: (416) 410-1313 & FAX: (416) 410-1806 www.nex-flow.com				
TITLE 1-1/2" HIGH TEMPERATURE STAINLESS STEEL RING VAC				
SIZE	CAGE CODE	DWG NO	RELEASE	REV
C	-	30003HTS	P	1
SCALE	1:1	CAD NO	SHEET	1 OF 1



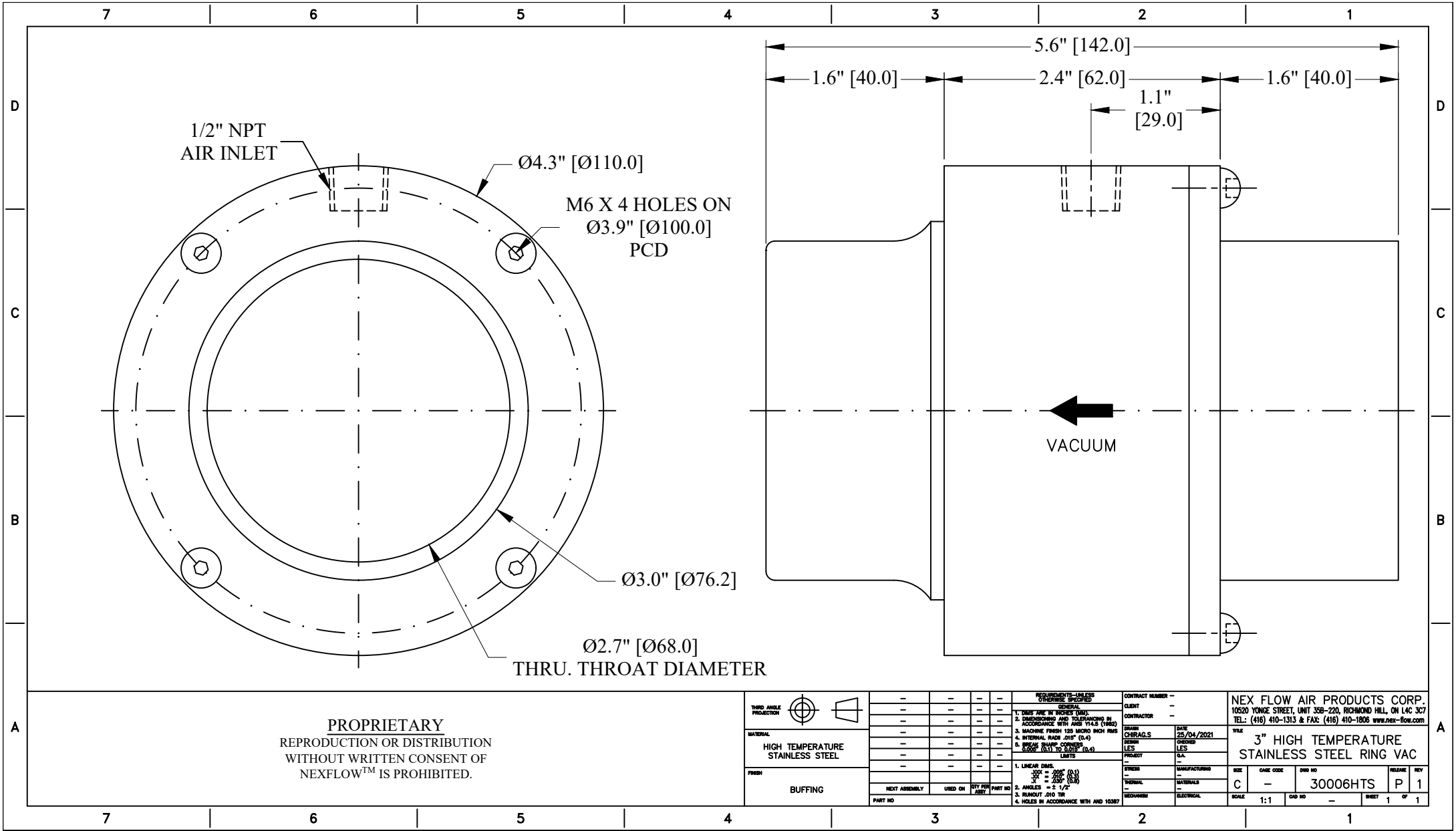
PROPRIETARY
 REPRODUCTION OR DISTRIBUTION
 WITHOUT WRITTEN CONSENT OF
 NEXFLOW™ IS PROHIBITED.

THIRD ANGLE PROJECTION					
MATERIAL	HIGH TEMPERATURE STAINLESS STEEL				
FINISH	BUFFING				
		NEXT ASSEMBLY	USED ON	QTY PER ASST	PART NO

REQUIREMENTS—UNLESS OTHERWISE SPECIFIED	
GENERAL	
1.	DIMS ARE IN INCHES (DIM)
2.	DIMENSIONING AND TOLERANCING IN ACCORDANCE WITH ANSI Y14.5 (1982)
3.	MACHINE FINISH 125 MICRO INCH RMS
4.	INTERNAL RADII .015" (0.4)
5.	BREAK SHARP CORNERS 0.005" (0.1) TO 0.015" (0.4)
LIMITS	
1.	LINEAR DIMS: .XXX = .005" (0.1) .XX = .010" (0.2) .X = .030" (0.8)
2.	ANGLES = ± 1/2°
3.	RUNOUT .010 TIR
4.	HOLES IN ACCORDANCE WITH AND 10387

CONTRACT NUMBER	---
CLIENT	---
CONTRACTOR	---
DRAWN	CHIRAG.S
DATE	25/04/2021
DESIGN	LES
PROJECT	---
STRESS	---
MANUFACTURING	---
THERMAL	---
MATERIALS	---
MECHANISM	---
ELECTRICAL	---

NEX FLOW AIR PRODUCTS CORP. 10520 YONGE STREET, UNIT 35B-220, RICHMOND HILL, ON L4C 3C7 TEL: (416) 410-1313 & FAX: (416) 410-1806 www.nex-flow.com					
TITLE 2" HIGH TEMPERATURE STAINLESS STEEL RING VAC					
SIZE	CAGE CODE	DWG NO	RELEASE	REV	
C	---	30004HTS	P	1	
SCALE	1:1	CAD NO	---	SHEET	1 OF 1



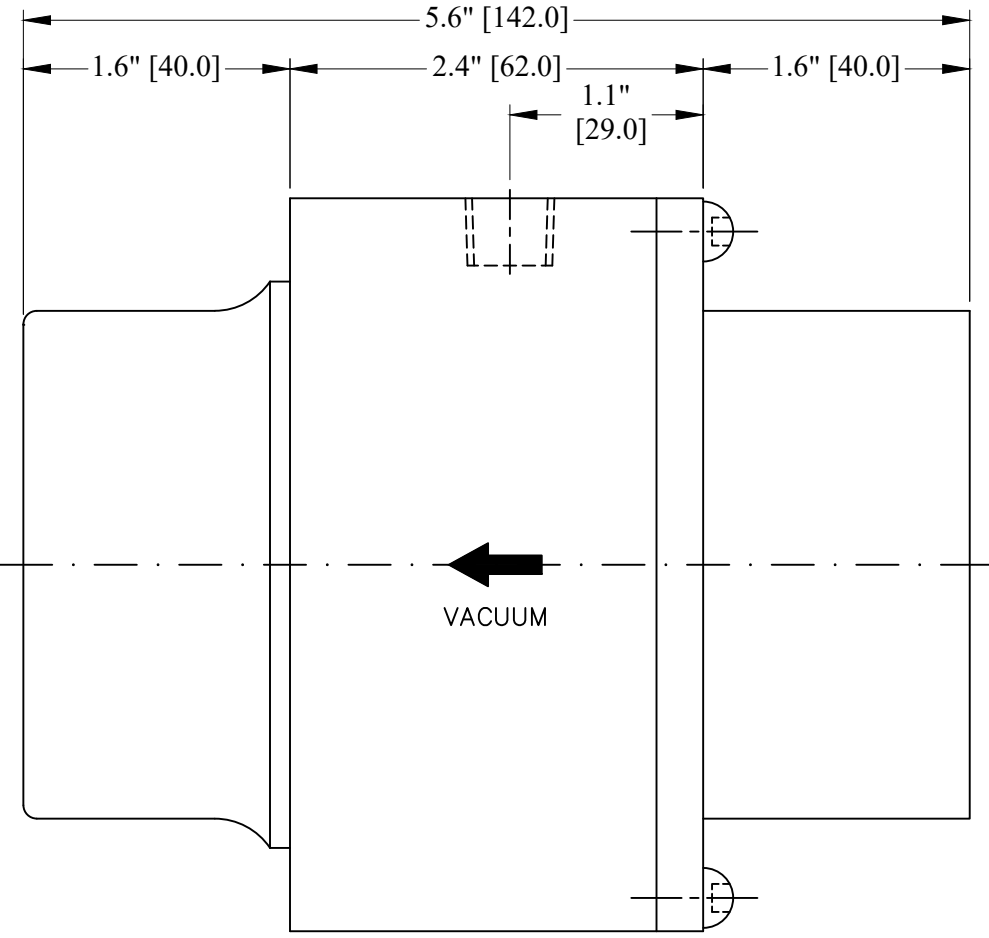
1/2" NPT
AIR INLET

Ø4.3" [Ø110.0]

M6 X 4 HOLES ON
Ø3.9" [Ø100.0]
PCD

Ø3.0" [Ø76.2]

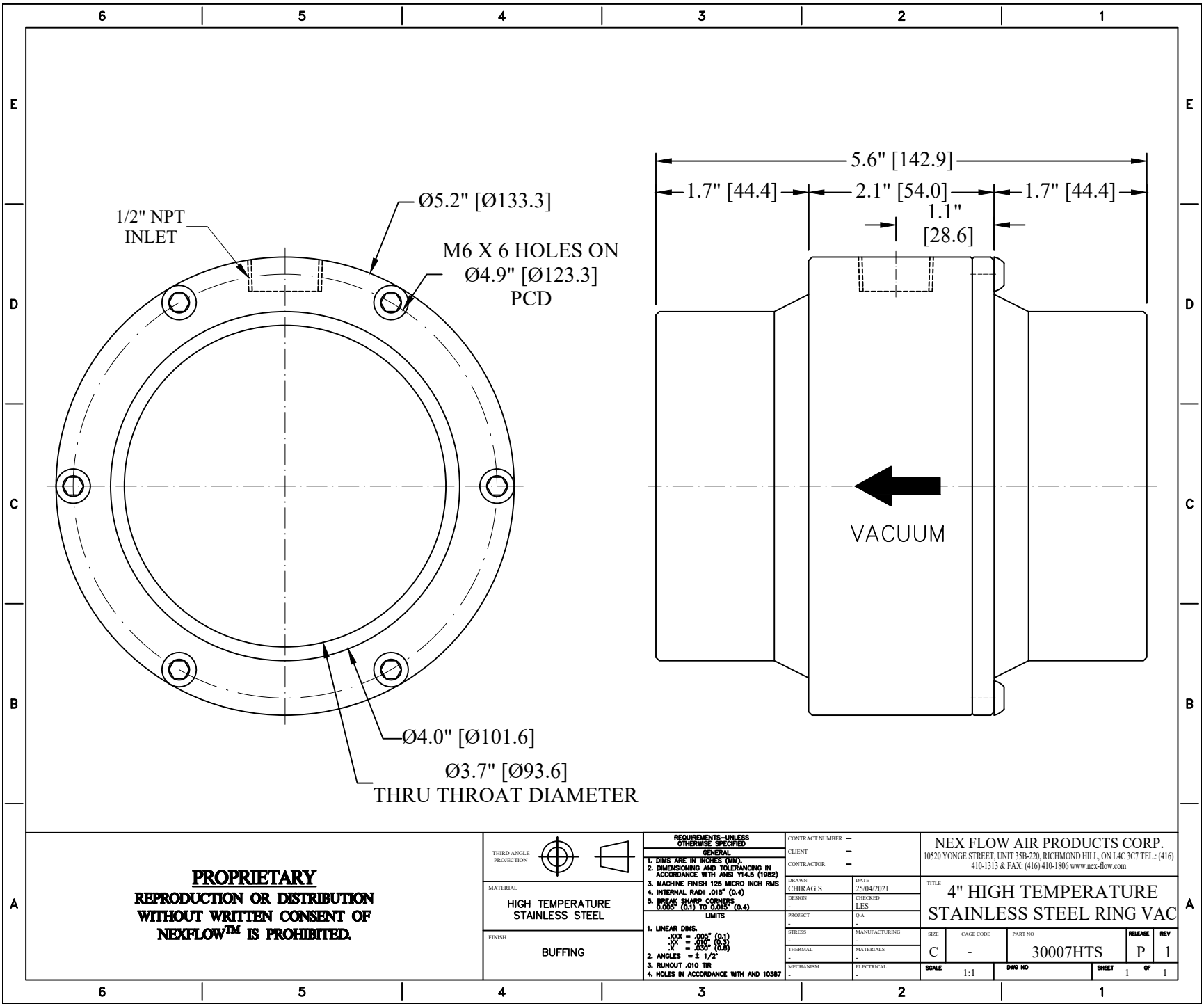
Ø2.7" [Ø68.0]
THRU. THROAT DIAMETER



VACUUM

PROPRIETARY
REPRODUCTION OR DISTRIBUTION
WITHOUT WRITTEN CONSENT OF
NEXFLOW™ IS PROHIBITED.

THIRD ANGLE PROJECTION		—	—	—	—	REQUIREMENTS—UNLESS OTHERWISE SPECIFIED	CONTRACT NUMBER —	NEX FLOW AIR PRODUCTS CORP. 10520 YONGE STREET, UNIT 358-220, RICHMOND HILL, ON L4C 3C7 TEL: (416) 410-1313 & FAX: (416) 410-1806 www.nex-flow.com					
						GENERAL	CLIENT —	TITLE 3" HIGH TEMPERATURE STAINLESS STEEL RING VAC					
MATERIAL HIGH TEMPERATURE STAINLESS STEEL	—	—	—	—	—	1. DRINK FINE W/INCHES (0.01)	DATE 25/04/2021	DRAWN CHRAGLS	DATE 25/04/2021	DESIGNED LES	SCALE 1:1	REV 1	
						2. DIMENSIONING AND TOLERANCING IN ACCORDANCE WITH ASME Y14.5 (1995)	CONTRACTOR —	PROJECT C.A.	MANUFACTURING C	GAME CODE —	DWG NO 30006HTS	RELEASE P	REV 1
FINISH BUFFING	—	—	—	—	—	3. MACHINE FRESH 125 MICRO INCH RMS	LIMITS	STRESS	MATERIALS	ELECTRICAL	SCALE 1:1	CHG NO —	SHEET 1
						4. INTERNAL RADI .015" (0.4)	5. BREAK SHARP CORNERS 0.005" (0.1) TO 0.015" (0.4)	1. LINEAR DIMS ±.005" (0.1) ±.002" (0.05) ±.001" (0.025)	2. ANGLES = ± 1/2°	3. FINISH .010 TH	4. HOLES IN ACCORDANCE WITH AND 10387	OF 1	
PART NO	NEXT ASSEMBLY	USED ON	QTY PER ASBY	PART NO									

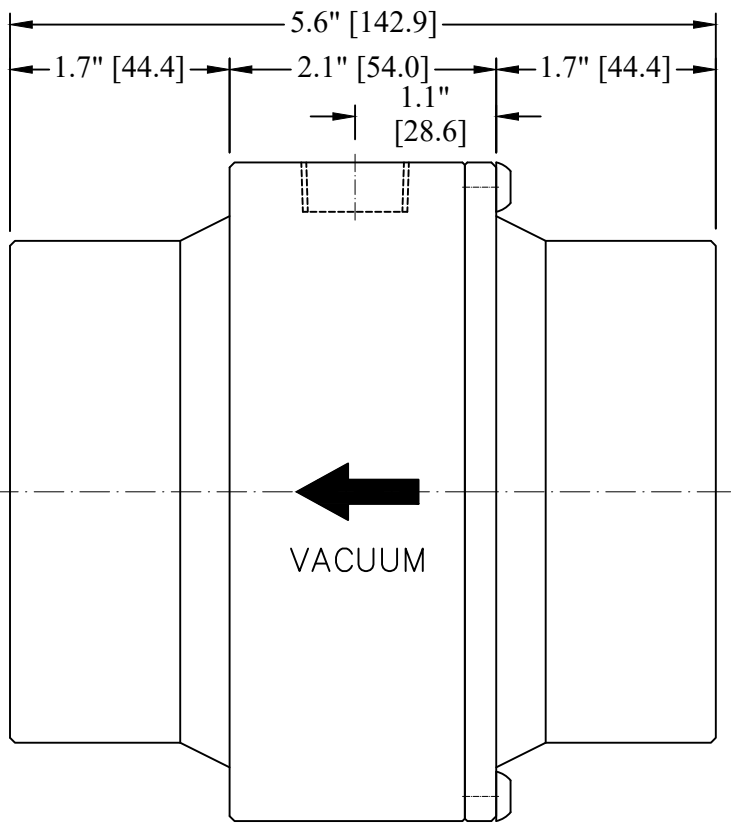


1/2" NPT
INLET

Ø5.2" [Ø133.3]

M6 X 6 HOLES ON
Ø4.9" [Ø123.3]
PCD

Ø4.0" [Ø101.6]
Ø3.7" [Ø93.6]
THRU THROAT DIAMETER



VACUUM

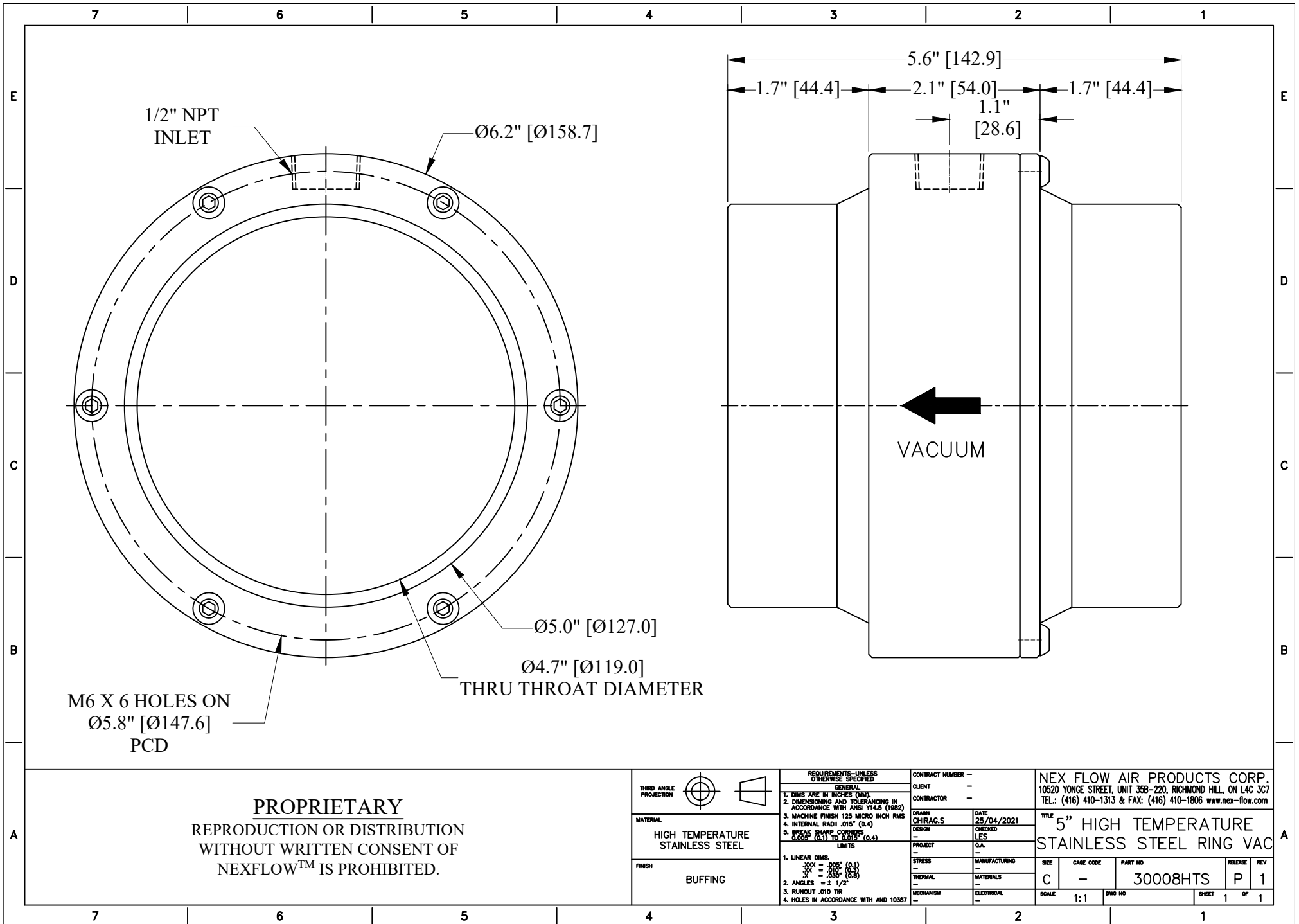
PROPRIETARY
REPRODUCTION OR DISTRIBUTION
WITHOUT WRITTEN CONSENT OF
NEXFLOW™ IS PROHIBITED.

THIRD ANGLE PROJECTION	
MATERIAL	HIGH TEMPERATURE STAINLESS STEEL
FINISH	BUFFING

REQUIREMENTS—UNLESS OTHERWISE SPECIFIED	
GENERAL	
1. DIMS ARE IN INCHES (MM).	
2. DIMENSIONING AND TOLERANCING IN ACCORDANCE WITH ANSI Y14.5 (1982)	
3. MACHINE FINISH 125 MICRO INCH RMS	
4. INTERNAL RADI .015" (0.4)	
5. BREAK SHARP CORNERS 0.005" (0.1) TO 0.015" (0.4)	
LIMITS	
1. LINEAR DIMS.	
.000" = .005" (0.1)	
.001" = .010" (0.2)	
.002" = .030" (0.8)	
2. ANGLES = ± 1/2°	
3. RUNOUT .010 TIR	
4. HOLES IN ACCORDANCE WITH AND 10387	

CONTRACT NUMBER	-
CLIENT	-
CONTRACTOR	-
DESIGN	CHIRAG.S
DATE	25/04/2021
CHECKED	LES
PROJECT	Q.A.
STRESS	-
MANUFACTURING	-
THERMAL	-
MATERIALS	-
MECHANISM	-
ELECTRICAL	-

NEX FLOW AIR PRODUCTS CORP. 10520 YONGE STREET, UNIT 35B-230, RICHMOND HILL, ON L4C 3C7 TEL.: (416) 410-1313 & FAX: (416) 410-1806 www.nex-flow.com			
TITLE 4" HIGH TEMPERATURE STAINLESS STEEL RING VAC			
SIZE	CAGE CODE	PART NO	RELEASE
C	-	30007HTS	P 1
SCALE	1:1	DWG NO	SHEET 1 OF 1



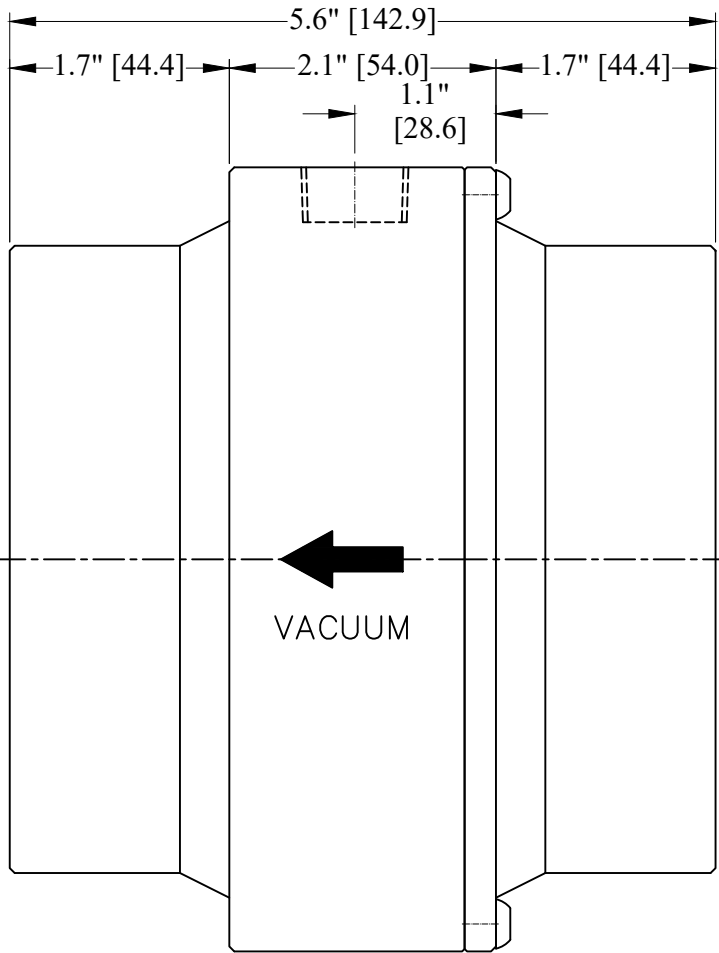
1/2" NPT
INLET

Ø6.2" [Ø158.7]

Ø5.0" [Ø127.0]

Ø4.7" [Ø119.0]
THRU THROAT DIAMETER

M6 X 6 HOLES ON
Ø5.8" [Ø147.6]
PCD



VACUUM

PROPRIETARY
REPRODUCTION OR DISTRIBUTION
WITHOUT WRITTEN CONSENT OF
NEXFLOW™ IS PROHIBITED.

THIRD ANGLE PROJECTION	
MATERIAL	HIGH TEMPERATURE STAINLESS STEEL
FINISH	BUFFING

REQUIREMENTS—UNLESS OTHERWISE SPECIFIED	
GENERAL	
1. DIMS ARE IN INCHES (MM)	
2. DIMENSIONING AND TOLERANCING IN ACCORDANCE WITH ANSI Y14.5 (1982)	
3. MACHINE FINISH 125 MICRO INCH RMS	
4. INTERNAL RADII .015" (0.4)	
5. BREAK SHARP CORNERS 0.005" (0.1) TO 0.015" (0.4)	
LIMITS	
1. LINEAR DIMS.	
XXX = .005" (0.1)	
YY = .010" (0.2)	
ZZ = .030" (0.8)	
2. ANGLES = ± 1/2°	
3. RUNOUT .010 TH	
4. HOLES IN ACCORDANCE WITH AND 10387	

CONTRACT NUMBER	—
CLIENT	—
CONTRACTOR	—
DATE	25/04/2021
CHECKED	LES
PROJECT	Q.A.
STRESS	—
MANUFACTURING	—
THERMAL	—
MATERIALS	—
ELECTRICAL	—
MECHANISM	—

NEX FLOW AIR PRODUCTS CORP. 10520 YONGE STREET, UNIT 35B-220, RICHMOND HILL, ON L4C 3C7 TEL.: (416) 410-1313 & FAX: (416) 410-1806 www.nex-flow.com					
TITLE 5" HIGH TEMPERATURE STAINLESS STEEL RING VAC					
SIZE	CAGE CODE	PART NO	RELEASE	REV	
C	—	30008HTS	P	1	
SCALE	1:1	DWG NO	SHEET	1	OF 1