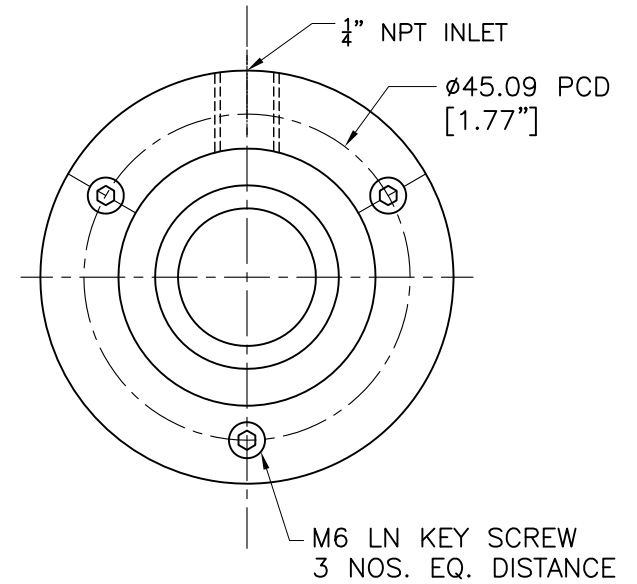
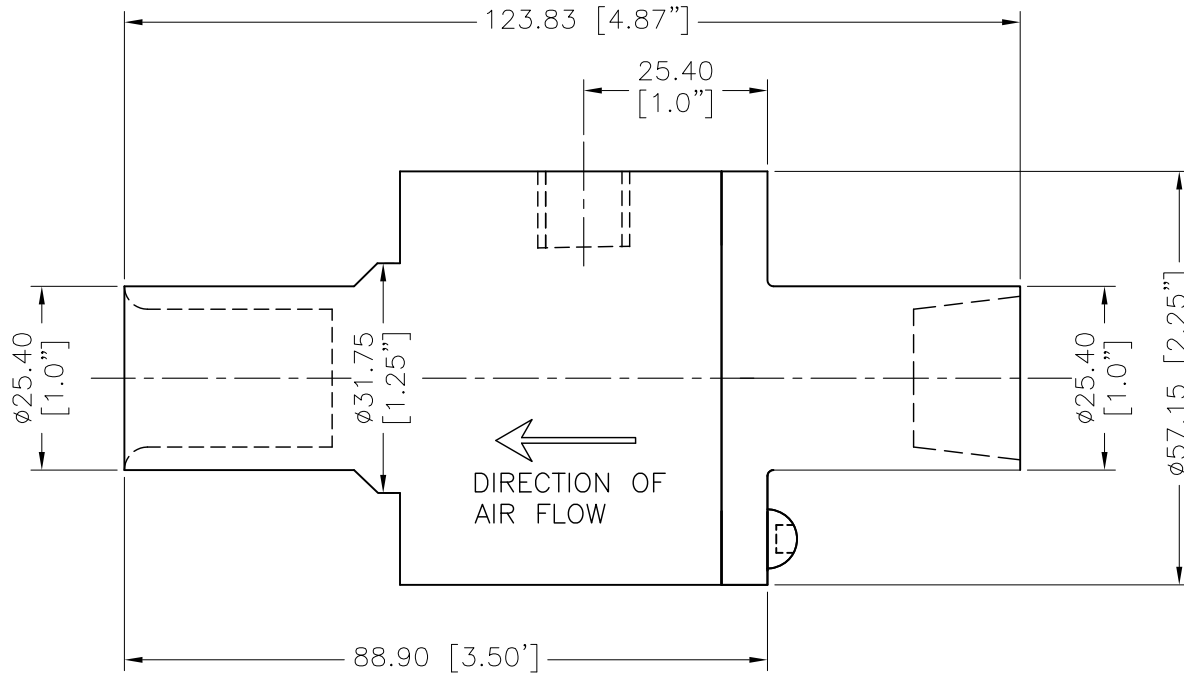


NOTES:

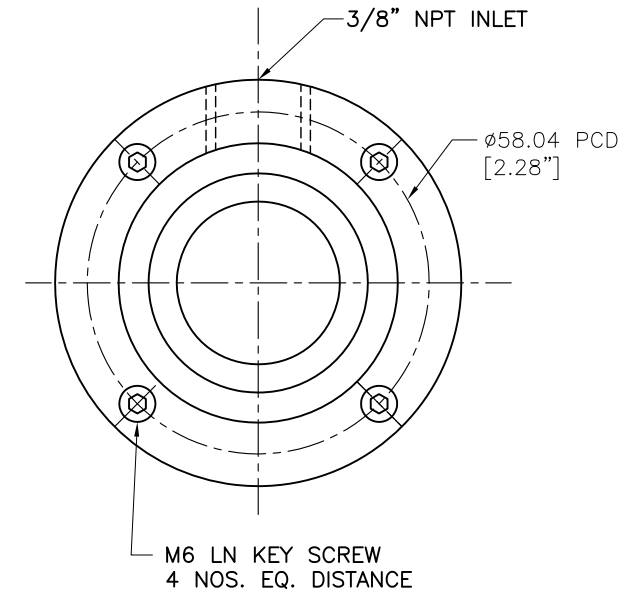
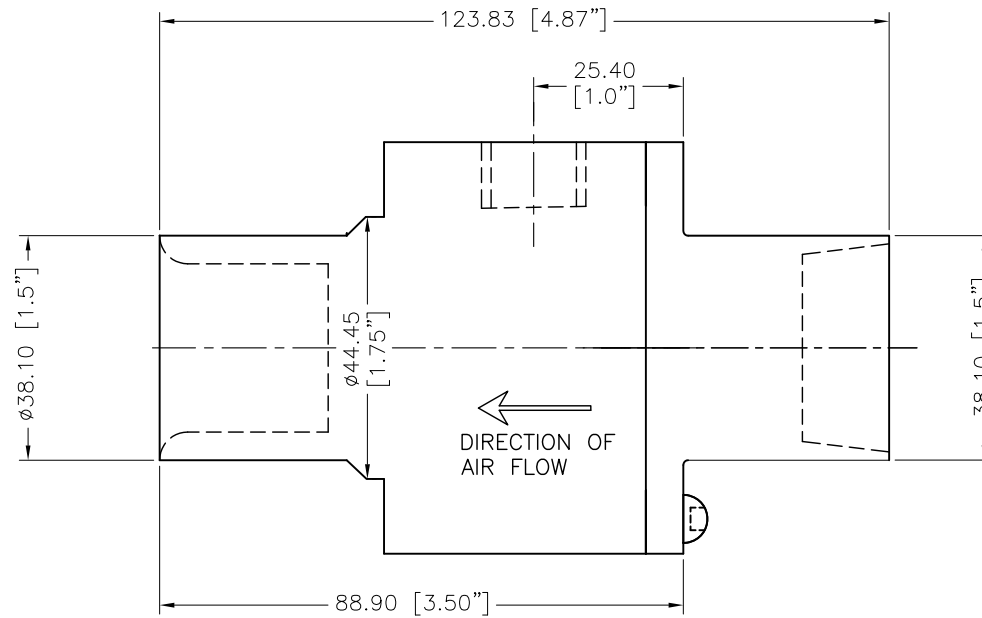
- 1 ALL DIMENSIONS SHOWN ARE FINISH OPERATIONAL DIMENSIONS WHICH INCLUDE RESIDUAL COATINGS UNLESS OTHERWISE SPECIFIED.



THIRD ANGLE PROJECTION		REQUIREMENTS—UNLESS OTHERWISE SPECIFIED		CONTRACT NUMBER —	NEX FLOW AIR PRODUCTS CORP. 10520 YONGE STREET, UNIT 35B-220, RICHMOND HILL, ON L4C 3C7 TEL.: (416) 410-1313 & FAX: (416) 410-1806 www.nex-flow.com							
		GENERAL		CLIENT —	TITLE							
MATERIAL	S.S. 304	1. DIMS ARE IN INCHES (MM) 2. DIMENSIONING AND TOLERANCING IN ACCORDANCE WITH ANSI Y14.5 (1982) 3. MACHINE FINISH 125 MICRO INCH RMS 4. INTERNAL RADII .015 5. BREAK SHARP CORNERS .005 TO .015		DRAWN S.PATIL	DATE 10/06/2013	OUTLINE DRAWING OF 1" S.S.304 RING VAC						
FINISH		LIMITS		DESIGN —	CHECKED LES	PROJECT —	G.A.	SIZE	CAGE CODE	DWG NO	RELEASE	REV
		1. LINEAR DIMS. .XXX = .005 .XX = .010 .X = .030 2. ANGLES = ± 1/2" 3. RUNOUT .010 TIR 4. HOLES IN ACCORDANCE WITH AND 10387		CONTRACTOR —		STRESS —	MANUFACTURING	C	—	30001S	P	—
				MECHANISM	ELECTRICAL	SCALE	1:1	CAD NO	1"—SSRV	SHEET	1	OF 1

NOTES:

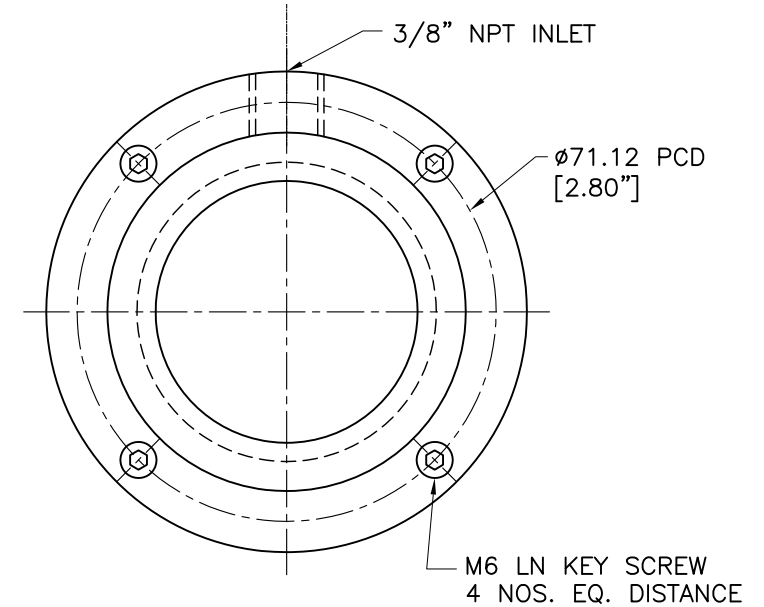
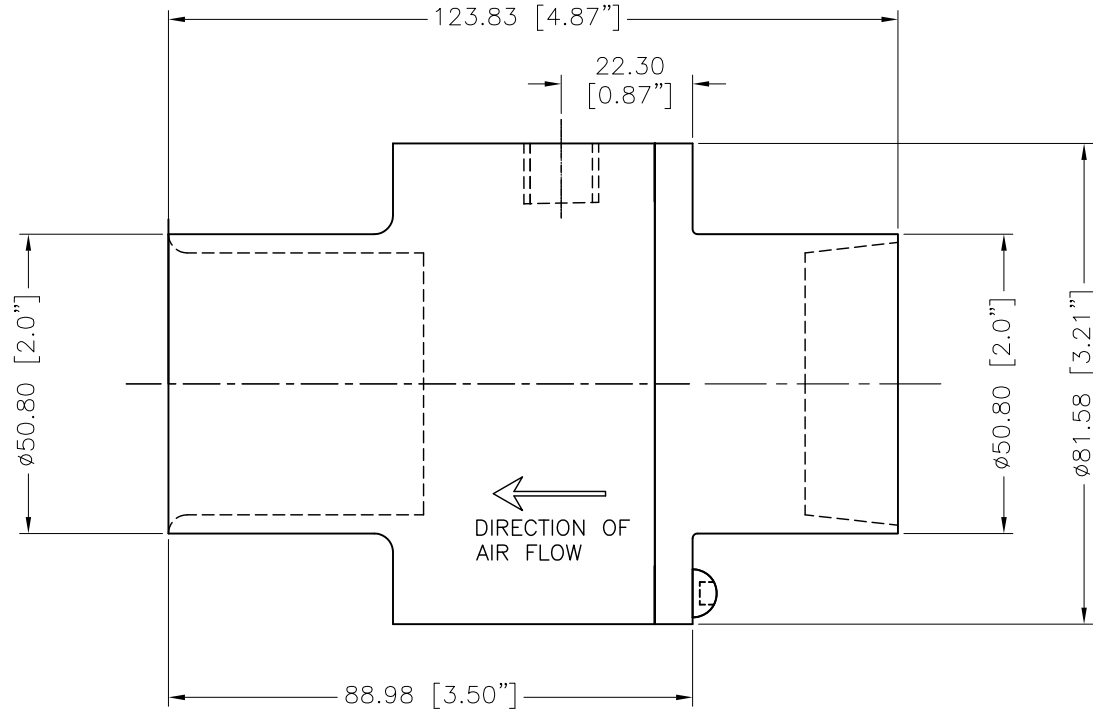
- 1 ALL DIMENSIONS SHOWN ARE FINISH OPERATIONAL DIMENSIONS WHICH INCLUDE RESIDUAL COATINGS UNLESS OTHERWISE SPECIFIED.



THIRD ANGLE PROJECTION 	REQUIREMENTS-UNLESS OTHERWISE SPECIFIED GENERAL 1. DIMS ARE IN INCHES (MM) 2. DIMENSIONING AND TOLERANCING IN ACCORDANCE WITH ANSI Y14.5 (1982) 3. MACHINE FINISH 125 MICRO INCH RMS 4. INTERNAL RADII .015 5. BREAK SHARP CORNERS .005 TO .015	CONTRACT NUMBER -- CLIENT -- CONTRACTOR --	NEX FLOW AIR PRODUCTS CORP. 10520 YONGE STREET, UNIT 35B-220, RICHMOND HILL, ON L4C 3C7 TEL.: (416) 410-1313 & FAX: (416) 410-1806 www.nex-flow.com			
	MATERIAL S.S. 304	LIMITS 1. LINEAR DIMS. .XXX = .005 .XX = .010 .X = .030 2. ANGLES = ± 1/2" 3. RUNOUT .010 TIR 4. HOLES IN ACCORDANCE WITH AND 10387	DRAWN S.PATIL DATE 10/06/2013 DESIGN LES PROJECT G.A. --	TITLE OUTLINE DRAWING OF 1.5" S.S.304 RING VAC		
FINISH --	STRESS -- THERMAL -- MECHANISM ELECTRICAL	MANUFACTURING -- MATERIALS -- ELECTRICAL	SIZE C SCALE 1:1	CAGE CODE -- CAD NO 1.5"-SSRV	DWG NO 30003S SHEET 1 OF 1	RELEASE P REV --

NOTES:

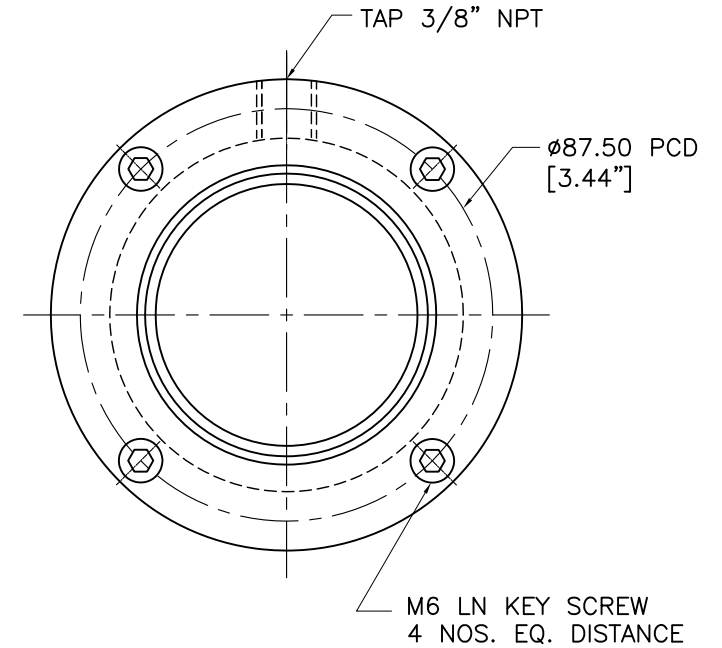
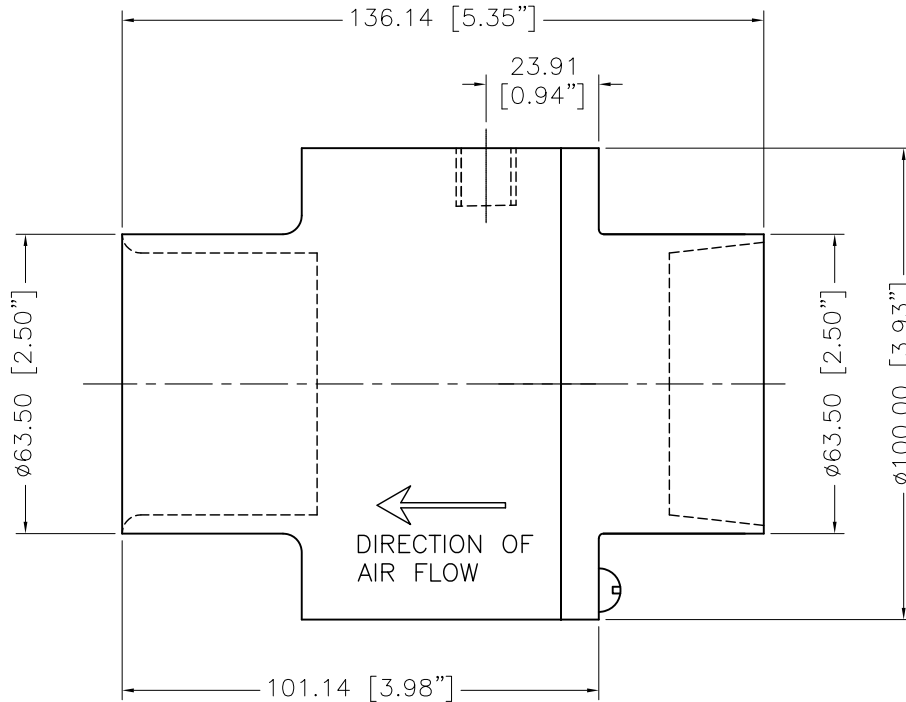
- 1 ALL DIMENSIONS SHOWN ARE FINISH OPERATIONAL DIMENSIONS WHICH INCLUDE RESIDUAL COATINGS UNLESS OTHERWISE SPECIFIED.



THIRD ANGLE PROJECTION		REQUIREMENTS—UNLESS OTHERWISE SPECIFIED		CONTRACT NUMBER —		NEX FLOW AIR PRODUCTS CORP. 10520 YONGE STREET, UNIT 35B-220, RICHMOND HILL, ON L4C 3C7 TEL: (416) 410-1313 & FAX: (416) 410-1806 www.nex-flow.com					
		GENERAL		CLIENT —	CONTRACTOR —	TITLE OUTLINE DRAWING OF 2" S.S.304 RING VAC					
MATERIAL S.S. 304	FINISH	1. DIMS ARE IN INCHES (MM) 2. DIMENSIONING AND TOLERANCING IN ACCORDANCE WITH ANSI Y14.5 (1982) 3. MACHINE FINISH 125 MICRO INCH RMS 4. INTERNAL RADII .015 5. BREAK SHARP CORNERS .005 TO .015		DATE 10/06/2013	Q.A.		SIZE C	CAGE CODE —	DWG NO 30004S	RELEASE P	REV —
		LIMITS		DESIGN LES	MANUFACTURING		SCALE 1:1	CAD NO 2"—SSRV		SHEET 1	OF 1
		1. LINEAR DIMS. .XXX = .005 .XX = .010 .X = .030 2. ANGLES = $\pm 1/2^\circ$ 3. RUNOUT .010 TIR 4. HOLES IN ACCORDANCE WITH AND 10387		PROJECT —	MATERIALS		MECHANISM ELECTRICAL				

NOTES:

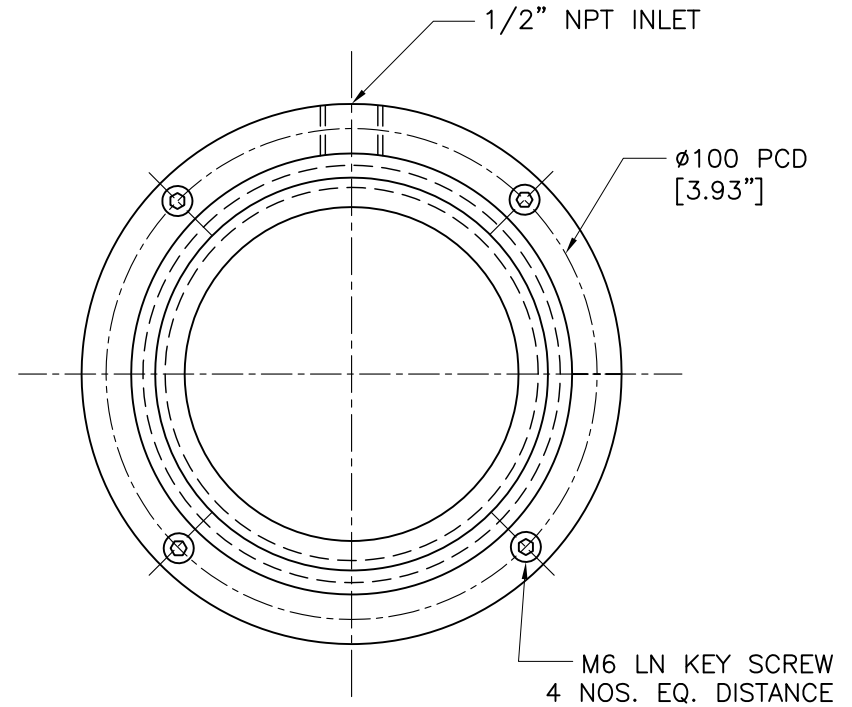
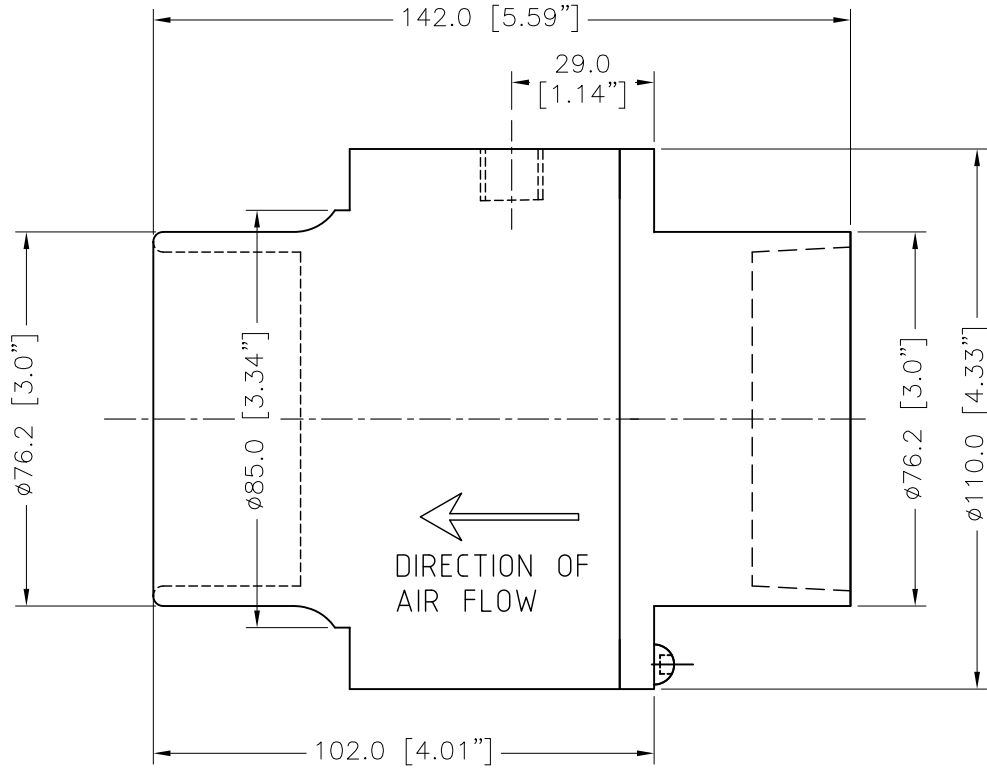
- 1 ALL DIMENSIONS SHOWN ARE FINISH OPERATIONAL DIMENSIONS WHICH INCLUDE RESIDUAL COATINGS UNLESS OTHERWISE SPECIFIED.



THIRD ANGLE PROJECTION		REQUIREMENTS—UNLESS OTHERWISE SPECIFIED		CONTRACT NUMBER —		NEX FLOW AIR PRODUCTS CORP. 10520 YONGE STREET, UNIT 35B-220, RICHMOND HILL, ON L4C 3C7 TEL.: (416) 410-1313 & FAX: (416) 410-1806 www.nex-flow.com							
		GENERAL		CLIENT —		TITLE							
MATERIAL	S.S. 304	1. DIMS ARE IN INCHES (MM)		CONTRACTOR —		OUTLINE DRAWING OF							
		2. DIMENSIONING AND TOLERANCING IN ACCORDANCE WITH ANSI Y14.5 (1982)		DRAWN S.PATIL DATE 10/06/2013		2.5" S.S.304 RING VAC							
FINISH		3. MACHINE FINISH 125 MICRO INCH RMS		DESIGN —		PROJECT —		SIZE	CAGE CODE	DWG NO	RELEASE	REV	
		4. INTERNAL RADI .015		CHECKED LES		Q.A. —		C	—	30005S	P	—	
		5. BREAK SHARP CORNERS .005 TO .015		LIMITS		STRESS —		MECHANISM —		SCALE	CAD NO	SHEET	OF
		1. LINEAR DIMS.		1. .XXX = .005		MANUFACTURING —		ELECTRICAL —		1:1	2.5"—SSRV	1	1
		2. ANGLES = ± 1/2"		2. .XX = .010		MATERIALS —							
		3. RUNOUT .010 TIR		3. .X = .030									
		4. HOLES IN ACCORDANCE WITH AND 10387		4. HOLES IN ACCORDANCE WITH AND 10387									

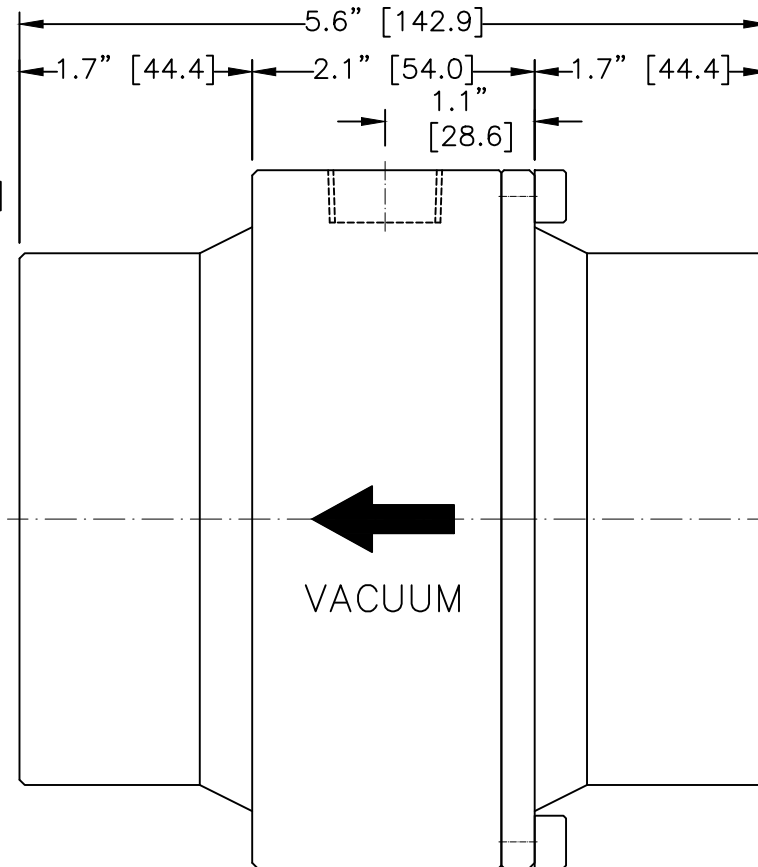
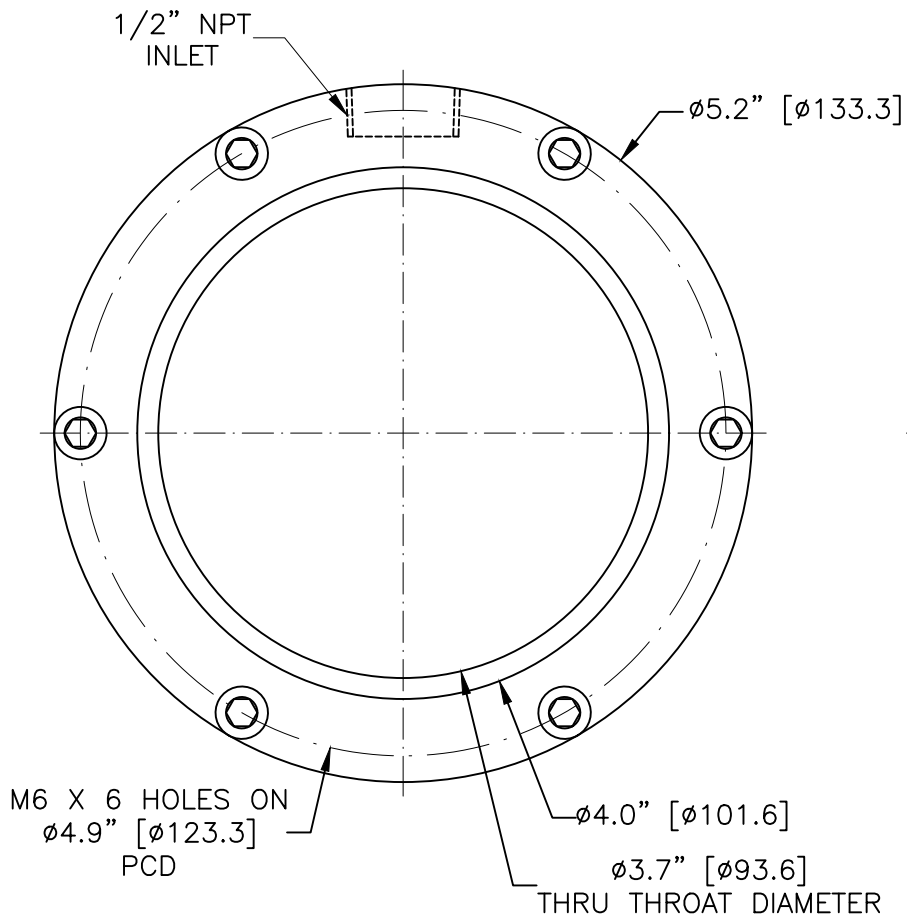
NOTES:

- 1 ALL DIMENSIONS SHOWN ARE FINISH OPERATIONAL DIMENSIONS WHICH INCLUDE RESIDUAL COATINGS UNLESS OTHERWISE SPECIFIED.



THIRD ANGLE PROJECTION		REQUIREMENTS—UNLESS OTHERWISE SPECIFIED	CONTRACT NUMBER —	NEX FLOW AIR PRODUCTS CORP. 10520 YONGE STREET, UNIT 358-220, RICHMOND HILL, ON L4C 3C7 TEL: (416) 410-1313 & FAX: (416) 410-1806 www.nex-flow.com								
		GENERAL	CLIENT —	TITLE OUTLINE DRAWING OF 3" S.S.304 RING VAC								
MATERIAL	S.S. 304	1. DIMS ARE IN INCHES (MM)	CONTRACTOR —	DATE	10/06/2013	SIZE	CAGE CODE	DWG NO	RELEASE	REV		
		2. DIMENSIONING AND TOLERANCING IN ACCORDANCE WITH ANSI Y14.5 (1982)	DESIGN	S.PATIL	LES						—	SCALE
FINISH		3. MACHINE FINISH 125 MICRO INCH RMS	PROJECT	—	MANUFACTURING	—	MATERIALS	—	ELECTRICAL	—		
		4. INTERNAL RADII .015	STRESS	—	MECHANISM	—						
		5. BREAK SHARP CORNERS .005 TO .015										
		LIMITS										
		1. LINEAR DIMS.										
		— .XX = .005										
		— .XX = .010										
		— .X = .030										
		2. ANGLES = ± 1/2°										
		3. RUNOUT .010 TIR										
		4. HOLES IN ACCORDANCE WITH AND 10367										

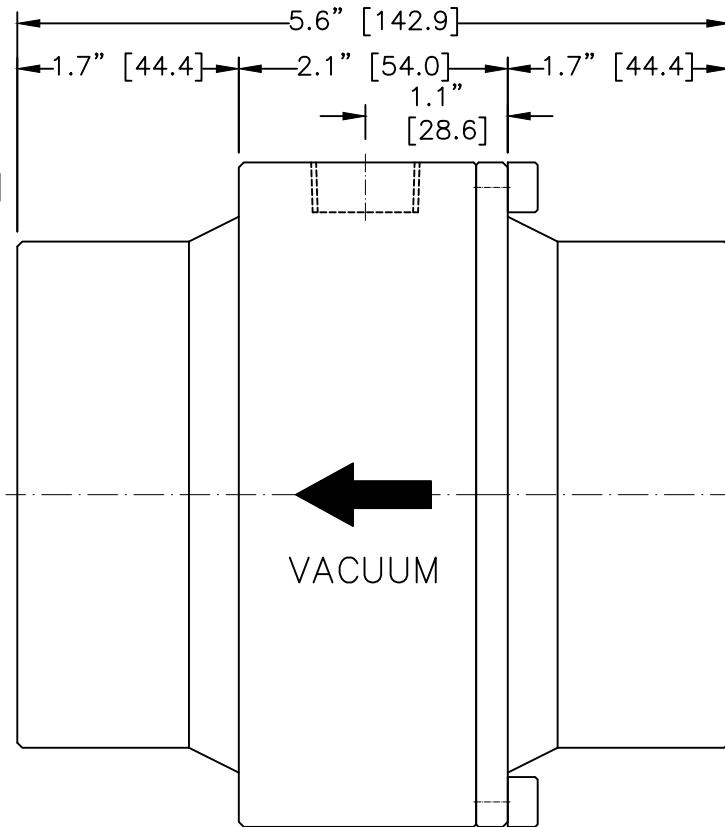
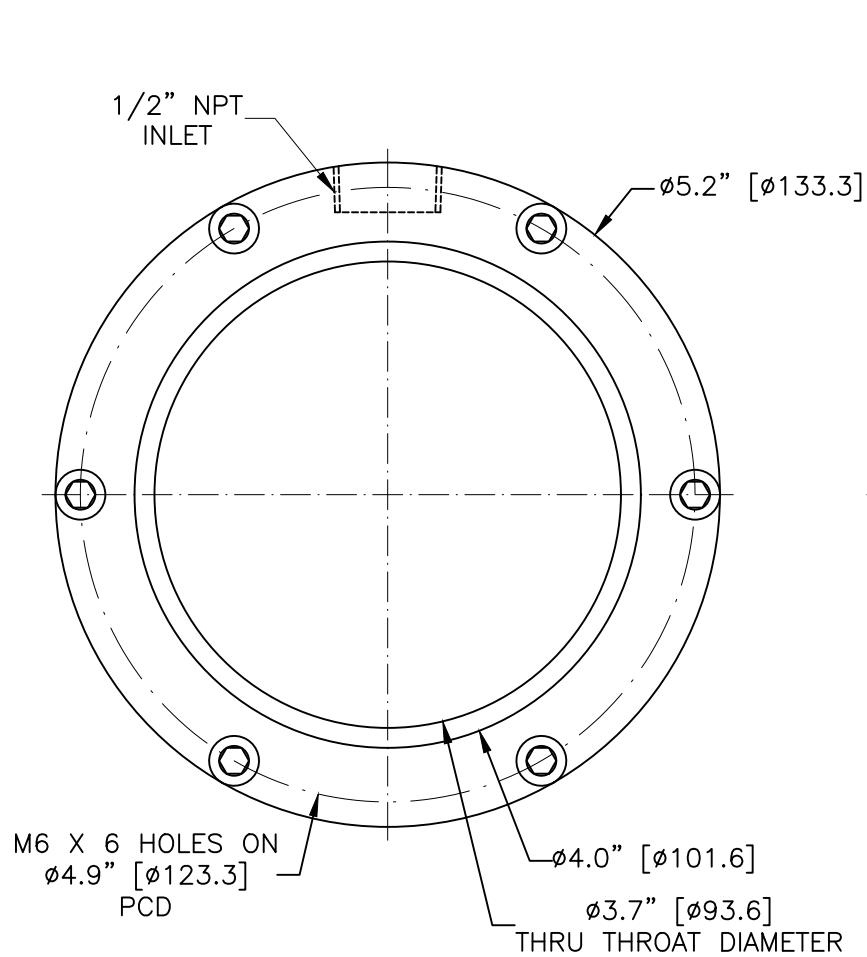
4" SS-316L RV OUTLINE



PROPRIETARY
REPRODUCTION OR DISTRIBUTION
WITHOUT WRITTEN CONSENT OF
NEXFLOW™ IS PROHIBITED.

THIRD ANGLE PROJECTION		REQUIREMENTS—UNLESS OTHERWISE SPECIFIED		CONTRACT NUMBER —		NEX FLOW AIR PRODUCTS CORP. 10520 YONGE STREET, UNIT 358-220, RICHMOND HILL, ON L4C 3C7 TEL.: (416) 410-1313 & FAX: (416) 410-1806 www.nex-flow.com						
		GENERAL		CLIENT —	DATE 10/03/2018	TITLE 4" SS-316L RING VAC OUTLINE						
MATERIAL	SS-316L	1. DIMS ARE IN INCHES (MM). 2. DIMENSIONING AND TOLERANCING IN ACCORDANCE WITH ANSI Y14.5 (1982) 3. MACHINE FINISH 125 MICRO INCH RMS 4. INTERNAL RADI .015" (0.4) 5. BREAK SHARP CORNERS 0.005" (0.1) TO 0.015" (0.4)		DESIGN CHIRAG.S	CHECKED ASHISH	PROJECT —	Q.A. —	SIZE C	CAGE CODE —	PART NO 30007S-316L-OL	RELEASE P	REV 1
FINISH	BUFFING	LIMITS		MANUFACTURING —	MATERIALS —	MECHANISM ELECTRICAL	SCALE 1:1	DWG NO	SHEET 1	OF 1		
		1. LINEAR DIMS. .XX = .005" (0.1) .XX = .010" (0.3) .XX = .030" (0.8)		1. ANGLES = ± 1/2" 2. RUNOUT .010 TIR 3. HOLES IN ACCORDANCE WITH AND 10387								

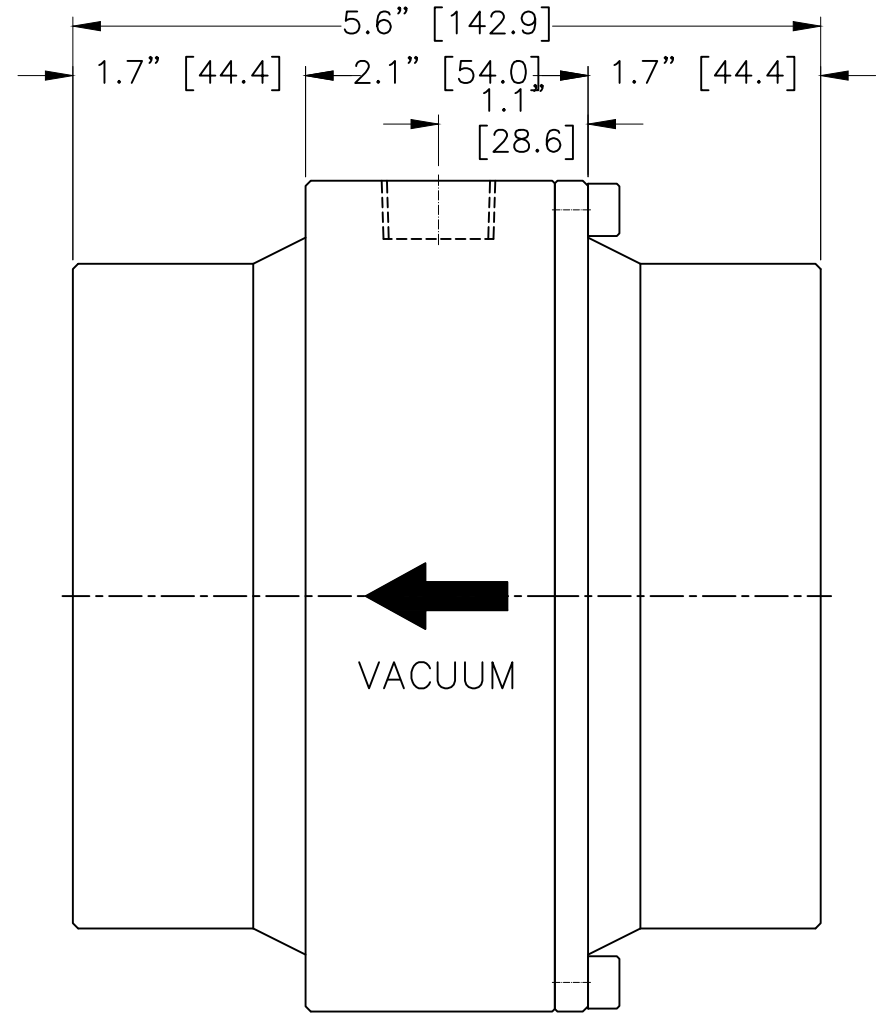
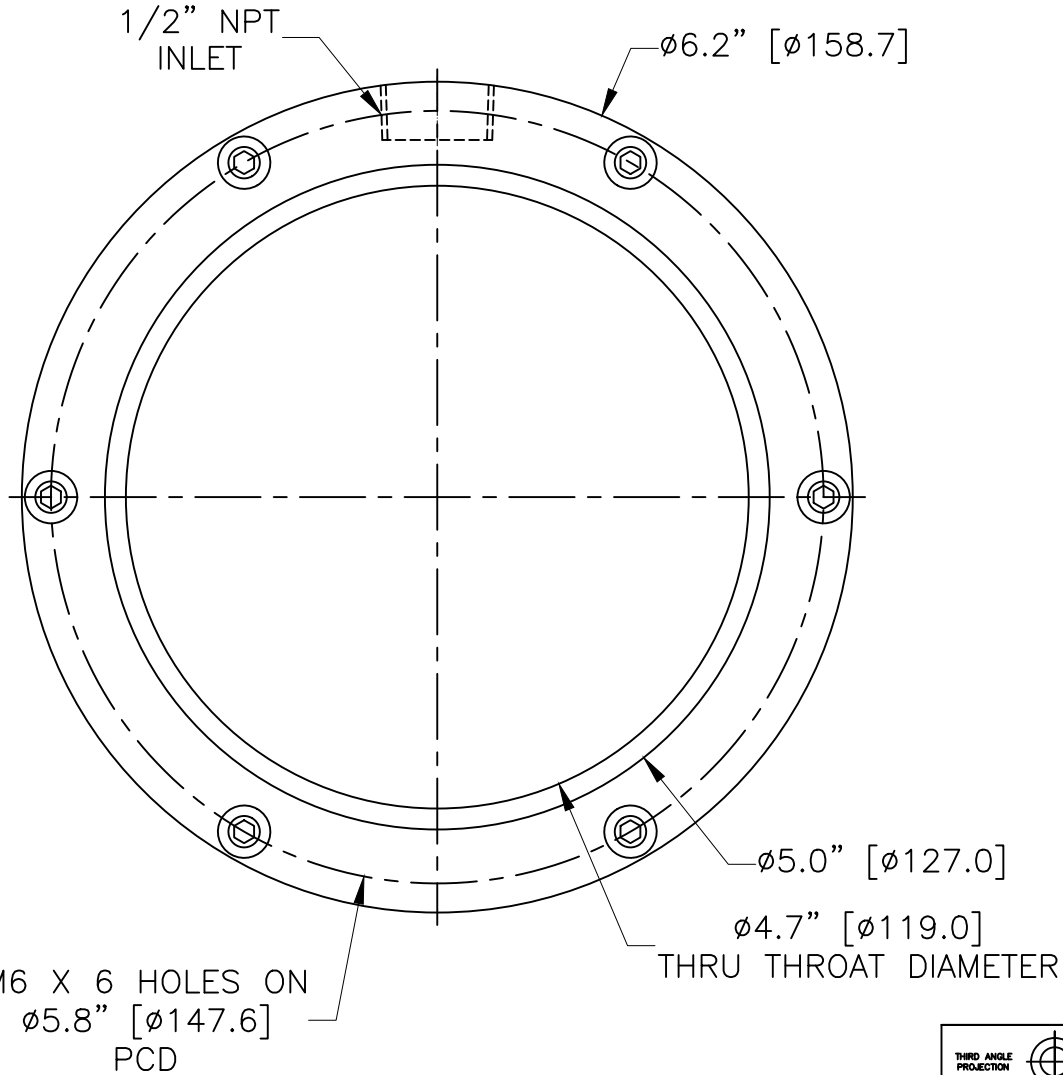
4" SS-304 RV OUTLINE



PROPRIETARY
REPRODUCTION OR DISTRIBUTION
WITHOUT WRITTEN CONSENT OF
NEXFLOW™ IS PROHIBITED.

THIRD ANGLE PROJECTION		REQUIREMENTS—UNLESS OTHERWISE SPECIFIED	CONTRACT NUMBER --	NEX FLOW AIR PRODUCTS CORP. 10520 YONGE STREET, UNIT 35B-220, RICHMOND HILL, ON L4C 3C7 TEL: (416) 410-1313 & FAX: (416) 410-1806 www.nex-flow.com			
		GENERAL	CLIENT --	TITLE 4" SS-304 RING VAC OUTLINE			
MATERIAL	SS-304	1. DIMS ARE IN INCHES (MM). 2. DIMENSIONING AND TOLERANCING IN ACCORDANCE WITH ANSI Y14.5 (1982)	CONTRACTOR --	DATE 10/03/2018	DESIGN ASHISH	CHECKED ASHISH	PROJECT G.A.
FINISH	BUFFING	3. MACHINE FINISH 125 MICRO INCH RMS 4. INTERNAL RADII .015" (0.4) 5. BREAK SHARP CORNERS 0.005" (0.1) TO 0.015" (0.4)	LIMITS	STRESS --	MANUFACTURING --	SCALE 1:1	SIZE C
		1. LINEAR DIMS. XXX = .005" (0.1) YYY = .010" (0.3) ZZZ = .030" (0.8)		TERMAL --	MATERIALS --	CAGE CODE -	PART NO 30007-OL
		2. ANGLES = ± 1/2°		MCHANISM --	ELECTRICAL --	RELEASE P	REV 1
		3. RUNOUT .010 TIR				DWG NO	SHEET 1 OF 1
		4. HOLES IN ACCORDANCE WITH AND 10387					

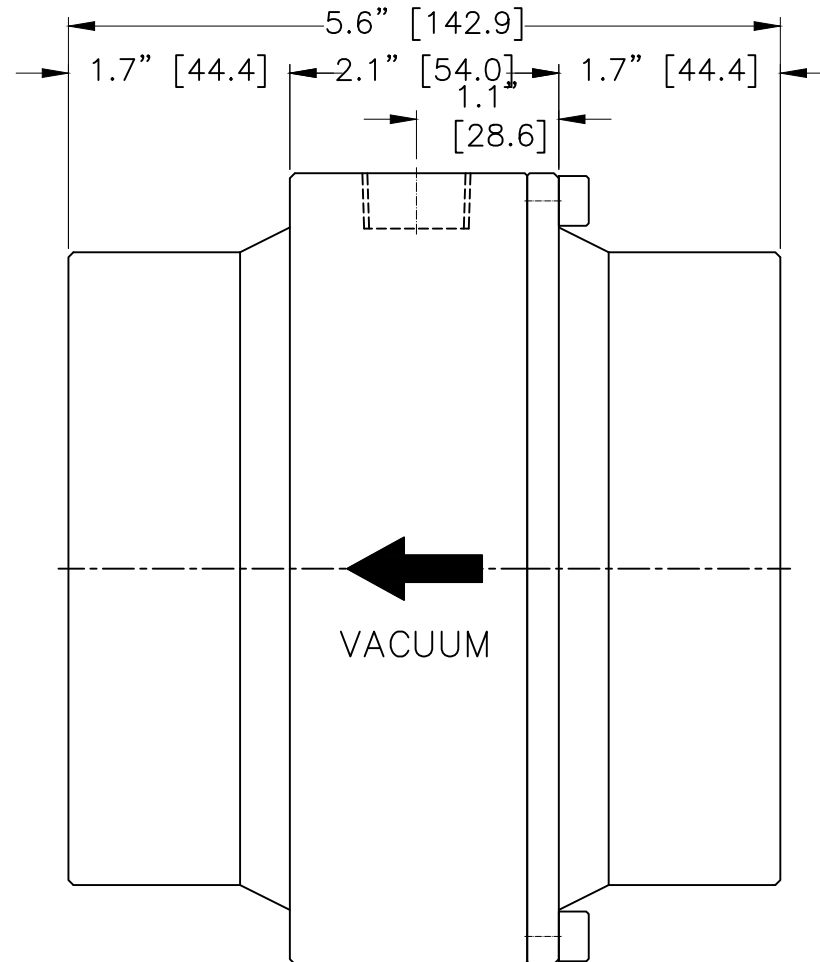
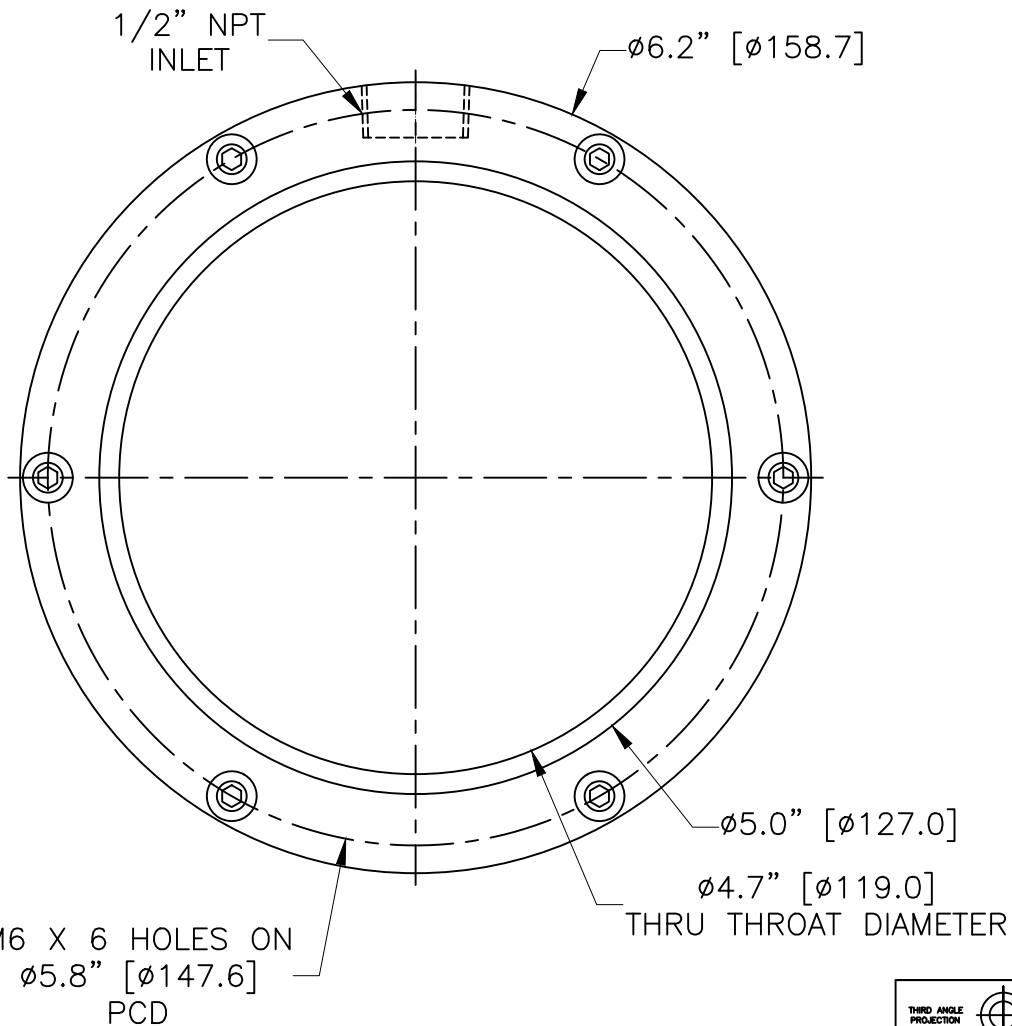
5" SS-316L RV OUTLINE



PROPRIETARY
REPRODUCTION OR DISTRIBUTION
WITHOUT WRITTEN CONSENT OF
NEXFLOW™ IS PROHIBITED.

THIRD ANGLE PROJECTION		REQUIREMENTS—UNLESS OTHERWISE SPECIFIED		CONTRACT NUMBER	NEX FLOW AIR PRODUCTS CORP. 10520 YONGE STREET, UNIT 35B-220, RICHMOND HILL, ON L4C 3C7 TEL: (416) 410-1313 & FAX: (416) 410-1806 www.nex-flow.com	
		GENERAL		CLIENT	TITLE	
MATERIAL	SS-316L	1. DIMS ARE IN INCHES (DIM.)		CONTRACTOR	5" SS-316L RING VAC OUTLINE	
		2. DIMENSIONING AND TOLERANCING IN ACCORDANCE WITH ANSI Y14.5 (1982)		DATE	SIZE	
FINISH	BUFFING	3. MACHINE FINISH 125 MICRO INCH RMS		DRAWN	CAGE CODE	
		4. INTERNAL RADII .015" (0.4)		CHIRAG.S	PART NO	
		5. BREAK SHARP CORNERS 0.005" (0.1) TO 0.015" (0.4)		DESIGN	RELEASE	
		LIMITS		ASHISH	REV	
		1. LINEAR DIMS.		PROJECT	SCALE	
		.XXX = .005" (0.1)		STRESS	1:1	
		.XX = .010" (0.3)		MANUFACTURING	DWG NO	
		.X = .030" (0.8)		MATERIALS	SHEET 1 OF 1	
		2. ANGLES = ± 1/2°		ELECTRICAL		
		3. RUNOUT .010 TIR				
		4. HOLES IN ACCORDANCE WITH AND 10387				

5" SS-304 RV OUTLINE

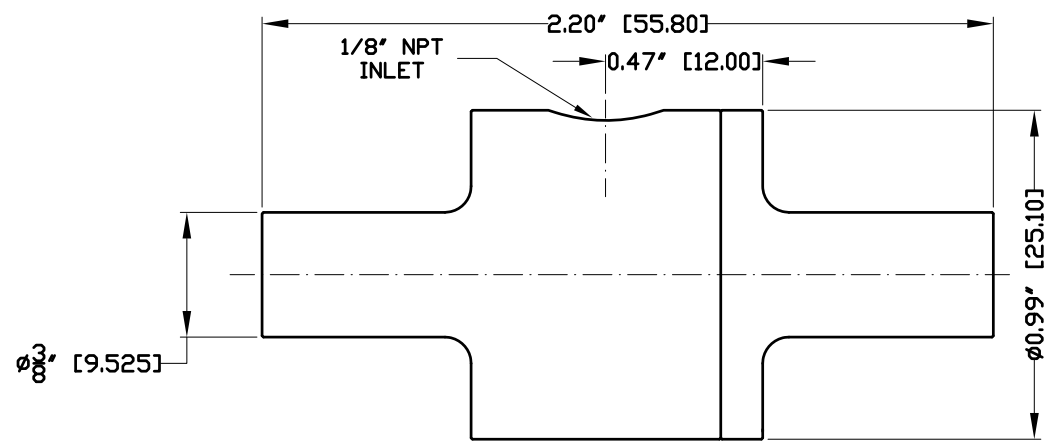


PROPRIETARY
REPRODUCTION OR DISTRIBUTION
WITHOUT WRITTEN CONSENT OF
NEXFLOW™ IS PROHIBITED.

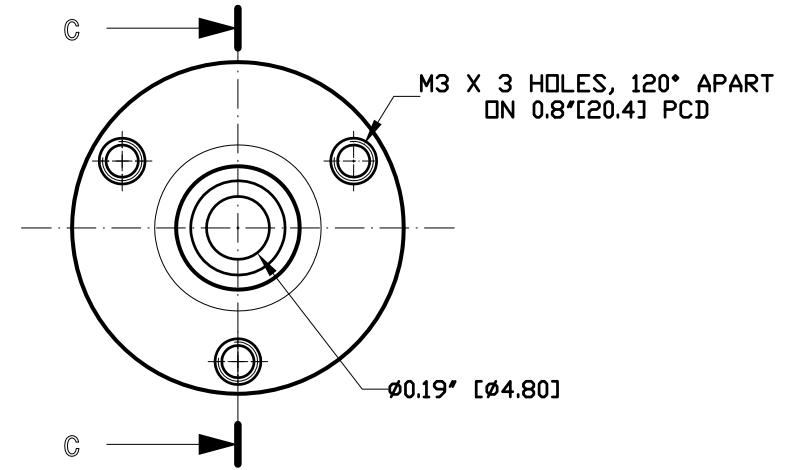
THIRD ANGLE PROJECTION		REQUIREMENTS-UNLESS OTHERWISE SPECIFIED		CONTRACT NUMBER --		NEX FLOW AIR PRODUCTS CORP.			
		GENERAL		CLIENT --	DATE		10520 YONGE STREET, UNIT 35B-220, RICHMOND HILL, ON L4C 3C7		
MATERIAL	SS-304	1. DIMS ARE IN INCHES (MM)		CONTRACTOR --	10/03/2018	TEL.: (416) 410-1313 & FAX: (416) 410-1806 www.nex-flow.com			
		2. DIMENSIONING AND TOLERANCING IN ACCORDANCE WITH ANSI Y14.5 (1982)		DESIGN	CHECKED	TITLE			
FINISH	BUFFING	3. MACHINE FINISH 125 MICRO INCH RMS		PROJECT	G.A.	5" SS-304 RING VAC OUTLINE			
		4. INTERNAL RADI .015" (0.4)		STRESS	MANUFACTURING	SIZE	CAGE CODE	PART NO	RELEASE
		5. BREAK SHARP CORNERS 0.005" (0.1) TO 0.015" (0.4)		MECHANISM		C	-	30008S-0L	P 1
		LIMITS				SCALE	1:1	DWG NO	SHEET 1 OF 1
		1. LINEAR DIMS. .004" (0.1)							
		.006" (0.15)							
		.010" (0.25)							
		.030" (0.75)							
		2. ANGLES $\pm 1/2^\circ$							
		3. RUNOUT .010 TIR							
		4. HOLES IN ACCORDANCE WITH AND 10387							

REVISIONS			
REV	DESCRIPTION	DATE	APPROVED
-	-	-	-

- NOTES:
- 1 ALL DIMENSIONS SHOWN ARE IN inches (mm)
 - 2 ALL DIMENSIONS SHOWN ARE FINISH OPERATIONAL DIMENSIONS WHICH INCLUDE RESIDUAL COATINGS UNLESS OTHERWISE SPECIFIED.
 - 3 PART TO BE FLAT PACKED PROPERLY TO AVOID ANY DAMAGE WHILE SHIPPING & HANDLING.
 - 4 ALL HORIZONTAL DIMENSIONS ARE SYMMETRICAL ABOUT VERTICAL CENTER LINE UNLESS OTHERWISE SPECIFIED.



Section view C-C



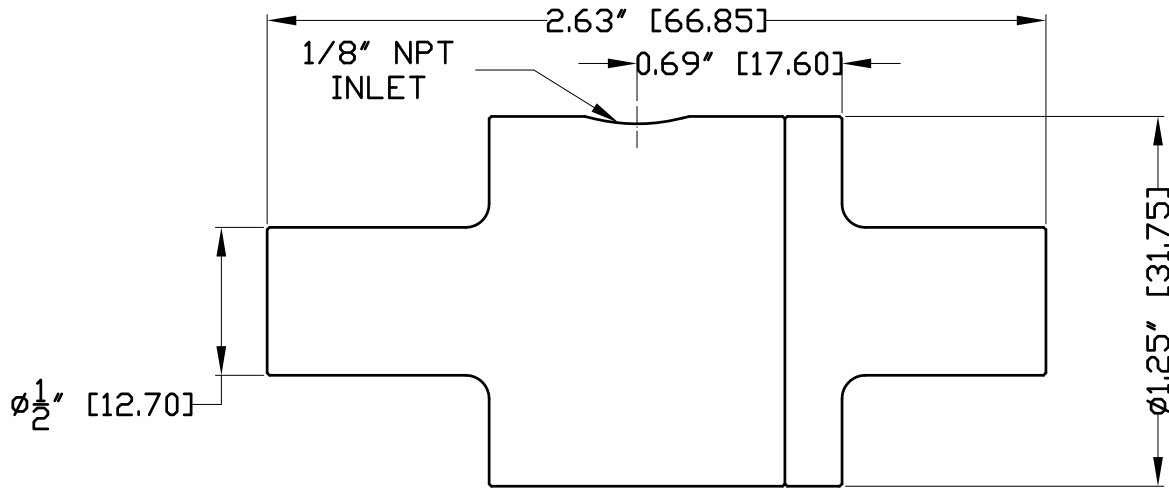
Front view

THIRD ANGLE PROJECTION	REQUIREMENTS—UNLESS OTHERWISE SPECIFIED	CONTRACT NUMBER —	NEX FLOW AIR PRODUCTS CORP.			
	GENERAL	CLIENT —	10520 YONGE STREET, UNIT 35B-220, RICHMOND HILL, ON L4C 3C7			
MATERIAL	1. DIMS ARE IN INCHES (MM) 2. DIMENSIONING AND TOLERANCING IN ACCORDANCE WITH ANSI Y14.5 (1982) 3. MACHINE FINISH 125 MICRO INCH RMS 4. INTERNAL RADII .015 5. BREAK SHARP CORNERS .005 TO .015	CONTRACTOR —	DATE	TEL.: (416) 410-1313 & FAX: (416) 410-1806 www.nex-flow.com		
FINISH	LIMITS	DRAWN	30/04/2016	TITLE		
	1. LINEAR DIMS. .00X = .005 .01X = .010 .03X = .030 2. ANGLES = ± 1/2° 3. RUNOUT .010 TIR 4. HOLES IN ACCORDANCE WITH AND 10387	DESIGN	CHECKED	OUTLINE DRAWING OF		
		PROJECT	A.S.H.I.S.H.	3/8" S.S.-304 RING VAC		
		STRENGTH	MANUFACTURING	SIZE	CAGE CODE	DWG NO.
		THERMAL	MATERIALS	—	—	39998S
		MECHANISM	ELECTRICAL	SCALE	CAD NO.	SHEET
				1:1	3/8"-SS304RV	1 OF 1

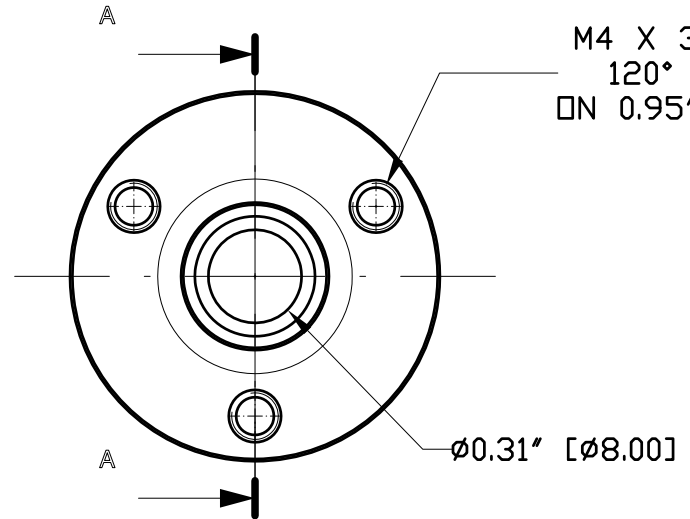
NOTES:

- 1 ALL DIMENSIONS SHOWN ARE IN INCHES (MM)
- 2 ALL DIMENSIONS SHOWN ARE FINISH OPERATIONAL DIMENSIONS WHICH INCLUDE RESIDUAL COATINGS UNLESS OTHERWISE SPECIFIED.
- 3 PART TO BE FLAT PACKED PROPERLY TO AVOID ANY DAMAGE WHILE SHIPPING & HANDLING.
- 4 ALL HORIZONTAL DIMENSIONS ARE SYMMETRICAL ABOUT VERTICAL CENTER LINE UNLESS OTHERWISE SPECIFIED.

REVISIONS			
REV	DESCRIPTION	DATE	APPROVED
-	-	-	-



Section view A-A



M4 X 3 HOLES,
120° APART
ON 0.95" [24] PCD

Front view

	REQUIREMENTS—UNLESS OTHERWISE SPECIFIED GENERAL		CONTRACT NUMBER — CLIENT — CONTRACTOR —		NEX FLOW AIR PRODUCTS CORP. 10520 YONGE STREET, UNIT 35B-220, RICHMOND HILL, ON L4C 3C7 TEL.: (416) 410-1313 & FAX: (416) 410-1806 www.nex-flow.com
	MATERIAL —	1. DIMS ARE IN INCHES (MM) 2. DIMENSIONING AND TOLERANCING IN ACCORDANCE WITH ASME Y14.5 (1994) 3. MACHINE FINISH 125 MICRO INCH RMS 4. INTERNAL RADI .015 5. BREAK SHARP CORNERS .005 TO .015	DRAWN CHRAGAS	DATE 30/04/2016	
FINISH —	LIMITS 1. LINEAR DIMS. .001" = .005 .010" = .010 .030" = .030 2. ANGLES = ± 1/2° 3. RUNOUT .010 TIR 4. HOLES IN ACCORDANCE WITH AND 10387	PROJECT — Q.A. —	CHECKED ASHISH	MANUFACTURING SIZE — OMS CODE — DWD NO. — 39999S	RELEASE REV — —
		THERMAL — MATERIALS —	PROJECT — Q.A. —	SCALE 1:1	DND NO. 1/2"-SS-304RV SHEET 1 OF 1