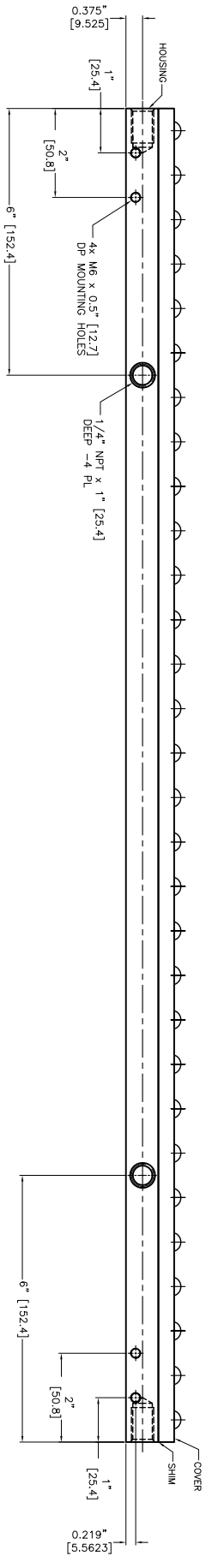
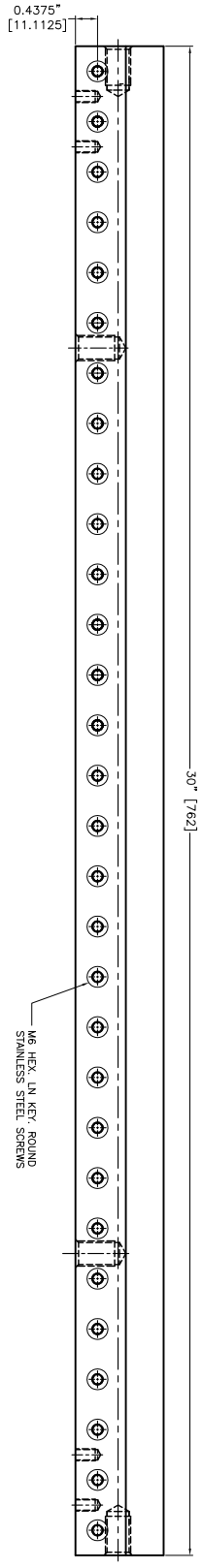
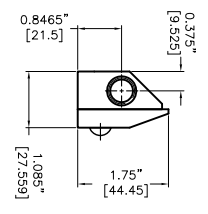


- NOTES:
- 1 ALL DIMENSIONS SHOWN ARE FINISH OPERATIONAL DIMENSIONS WHICH INCLUDE RESIDUAL COATINGS UNLESS OTHERWISE SPECIFIED.
 - 2 PART TO BE PACKED PROPERLY TO AVOID ANY DAMAGE WHILE SHIPPING & HANDLING.
 - 3 ALL HORIZONTAL DIMENSIONS ARE SYMMETRICAL ABOUT CENTER LINE UNLESS OTHERWISE SPECIFIED.



TEMP ANGLE PROTECTION		REQUIREMENTS-316L STAINLESS OTHERWISE SPECIFIED	
MATERIAL SS 304		1. FINISH (SEE DRAWING) 2. DIMENSIONING AND TOLERANCING IN ACCORDANCE WITH ANSI Y14.5 (1982) 3. MAKEING FINISH 125 MICRO INCH RMS 4. BREAK SHARP CORNERS .005 TO .015	
FINISH -		CONTRACT NUMBER -	
PART NO -		CLIENT -	
NEXT ASSEMBLY -		CONTRACTOR -	
USED ON SS1		DATE 27/11/2013	
QTY PER PART NO -		DESIGN AS SHOWN	
1. LINEAR DIMS .005 .010 .020 .030 .040 .050 .060 .070 .080 .090 .100 .125 .150 .175 .200 .250 .300 .375 .450 .500 .562 .625 .750 .875 1.000 1.125 1.250 1.500 1.750 2.000 2.250 2.500 3.000 3.500 4.000 4.500 5.000 5.500 6.000 6.500 7.000 7.500 8.000 8.500 9.000 9.500 10.000		MANUFACTURING -	
2. ANGLES ± 1/2°		TESTING -	
3. RADIUS .010 MIN		ELECTRICAL -	
4. HOLES IN ACCORDANCE WITH AND 10397		SCALE 1:1	
5. DIMENSIONS .005 .010 .020 .030 .040 .050 .060 .070 .080 .090 .100 .125 .150 .175 .200 .250 .300 .375 .450 .500 .562 .625 .750 .875 1.000 1.125 1.250 1.500 1.750 2.000 2.250 2.500 3.000 3.500 4.000 4.500 5.000 5.500 6.000 6.500 7.000 7.500 8.000 8.500 9.000 9.500 10.000		REV -	

NEX FLOW AIR PRODUCTS CORP.
 10520 YONCE STREET, UNIT 259-220 RICHMOND HILL, ON L4C 3C7
 TEL: (416) 410-1313 & FAX: (416) 410-1806 WWW.NEX-FLOW.COM

OUTLINE DRAWING OF
 30" X-STREAM AIR BLADE AIR KNIFE