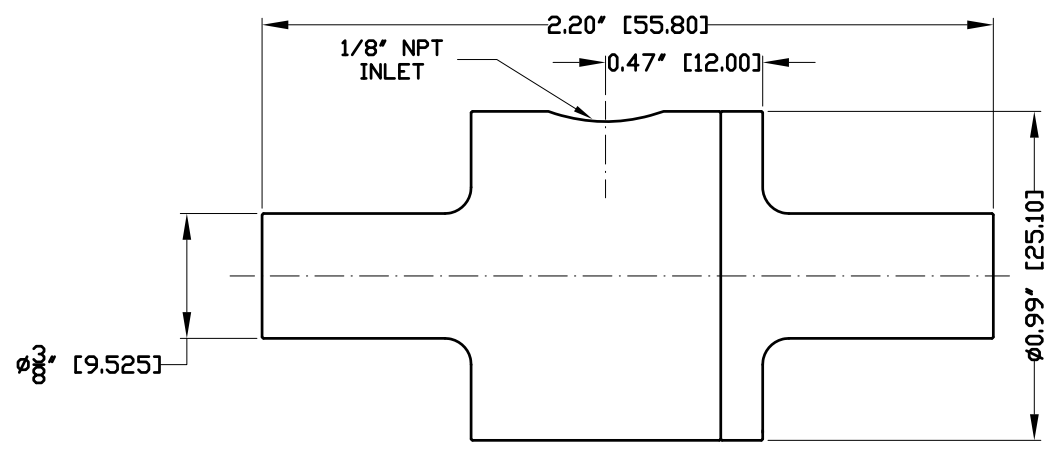
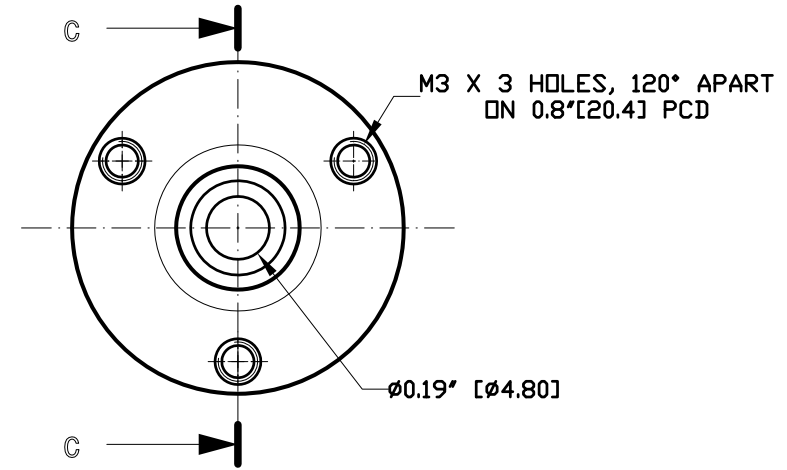


REVISIONS			
REV	DESCRIPTION	DATE	APPROVED
-	-	-	-

NOTES:  
 1 ALL DIMENSIONS SHOWN ARE IN inches (mm)  
 2 ALL DIMENSIONS SHOWN ARE FINISH OPERATIONAL DIMENSIONS WHICH INCLUDE RESIDUAL COATINGS UNLESS OTHERWISE SPECIFIED.  
 3 PART TO BE FLAT PACKED PROPERLY TO AVOID ANY DAMAGE WHILE SHIPPING & HANDLING.  
 4 ALL HORIZONTAL DIMENSIONS ARE SYMMETRICAL ABOUT VERTICAL CENTER LINE UNLESS OTHERWISE SPECIFIED.



Section view C-C



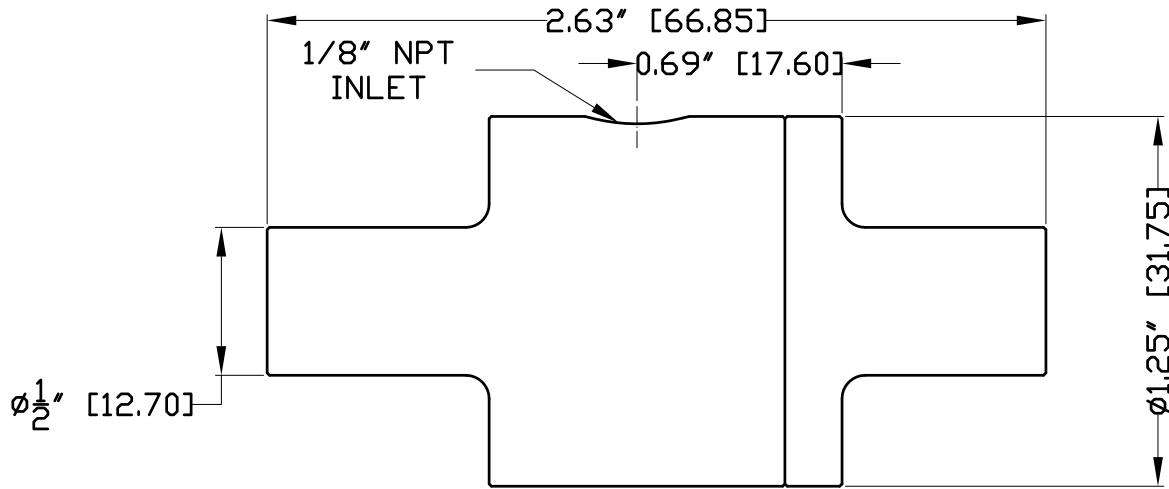
Front view

THIRD ANGLE PROJECTION	REQUIREMENTS—UNLESS OTHERWISE SPECIFIED	CONTRACT NUMBER —	NEX FLOW AIR PRODUCTS CORP.			
	GENERAL	CLIENT —	10520 YONGE STREET, UNIT 35B-220, RICHMOND HILL, ON L4C 3C7			
MATERIAL	1. DIMS ARE IN INCHES (MM)	CONTRACTOR —	DRAWN	DATE	TEL: (416) 410-1313 & FAX: (416) 410-1806 www.nex-flow.com	
	2. DIMENSIONING AND TOLERANCING IN ACCORDANCE WITH ANSI Y14.5 (1982)		CHIRAGS	30/04/2016	TITLE	
FINISH	3. MACHINE FINISH 125 MICRO INCH RMS		DESIGN	CHECKED	OUTLINE DRAWING OF	
	4. INTERNAL RADII .015		—	ASHISH	3/8" ALUMINIUM RING VAC	
	5. BREAK SHARP CORNERS .005 TO .015		PROJECT	Q.L.	SIZE	CAGE CODE
	LIMITS		—	—	—	DWG NO
	1. LINEAR DIMS.		STREBS	MANUFACTURING	—	39998
	.00X = .005		—	—	RELEASE	REV
	.01X = .010		THERMAL	MATERIALS	—	—
	.03X = .030		—	—	SCALE	1:1
	2. ANGLES = ± 1/2°		MECHANISM	ELECTRICAL	DWG NO	3/8"—ALRY
	3. RUNOUT .010 TIR		—	—	SHEET	1 OF 1
	4. HOLES IN ACCORDANCE WITH AND 10387					

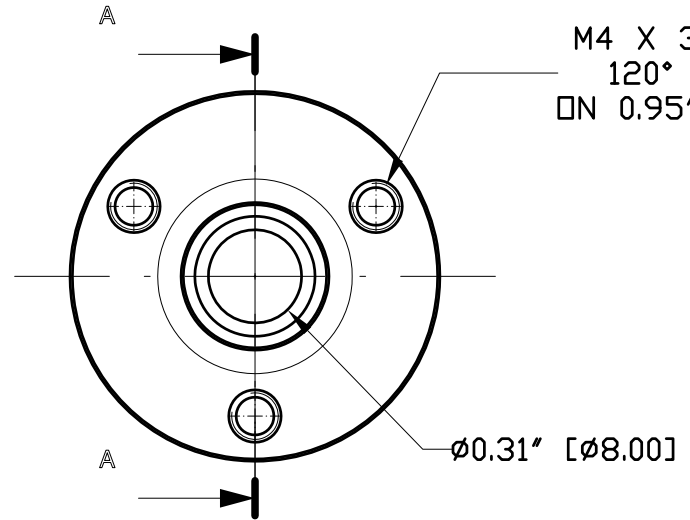
NOTES:

- 1 ALL DIMENSIONS SHOWN ARE IN INCHES (MM)
- 2 ALL DIMENSIONS SHOWN ARE FINISH OPERATIONAL DIMENSIONS WHICH INCLUDE RESIDUAL COATINGS UNLESS OTHERWISE SPECIFIED.
- 3 PART TO BE FLAT PACKED PROPERLY TO AVOID ANY DAMAGE WHILE SHIPPING & HANDLING.
- 4 ALL HORIZONTAL DIMENSIONS ARE SYMMETRICAL ABOUT VERTICAL CENTER LINE UNLESS OTHERWISE SPECIFIED.

REVISIONS			
REV	DESCRIPTION	DATE	APPROVED
-	-	-	-



Section view A-A



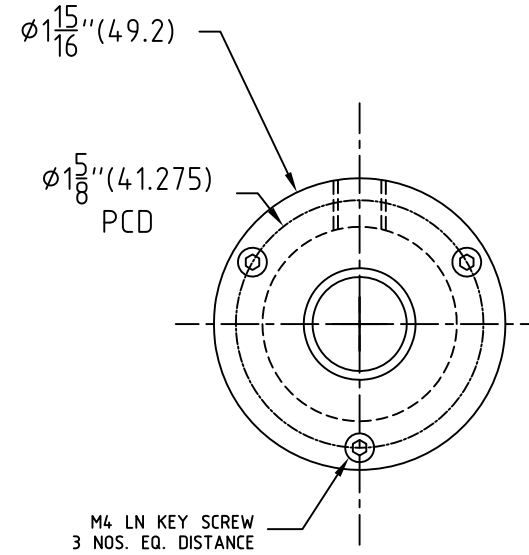
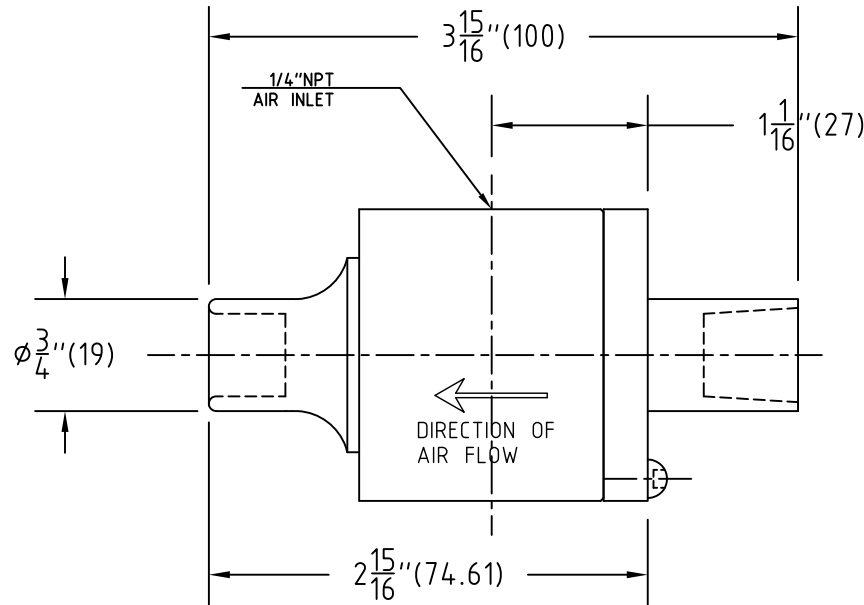
M4 X 3 HOLES,  
120° APART  
ON 0.95" [24] PCD

Front view

	REQUIREMENTS—UNLESS OTHERWISE SPECIFIED		CONTRACT NUMBER —		NEX FLOW AIR PRODUCTS CORP. 10520 YONGE STREET, UNIT 35B-220, RICHMOND HILL, ON L4C 3C7 TEL.: (416) 410-1313 & FAX: (416) 410-1806 www.nex-flow.com	
	GENERAL		CLIENT —	TITLE		
MATERIAL	1. DIMS ARE IN INCHES (MM) 2. DIMENSIONING AND TOLERANCING IN ACCORDANCE WITH ASME Y14.5 (1994) 3. MACHINE FINISH 125 MICRO INCH RMS 4. INTERNAL RADI .015 5. BREAK SHARP CORNERS .005 TO .015		CONTRACTOR —	DATE	30/04/2016	
FINISH	LIMITS		DESIGN	CHECKED	ASHSB	
	1. LINEAR DIMS. .001" = .005 .010" = .010 .030" = .030 .1" = ± 1/2" 2. ANGLES = ± 1/2" 3. RUNOUT .010 TIR 4. HOLES IN ACCORDANCE WITH AND 10387		PROJECT	DRAWN	CHRAGS	
			STRESS	MANUFACTURING		
			THERMAL	MATERIALS		
			MECHANISM	ELECTRICAL		
			SCALE	1:1	QND NO	
				1/2" - ALRV	SHEET	
					1 OF 1	

NOTES:

- 1 ALL DIMENSIONS SHOWN ARE FINISH OPERATIONAL DIMENSIONS WHICH INCLUDE RESIDUAL COATINGS UNLESS OTHERWISE SPECIFIED.

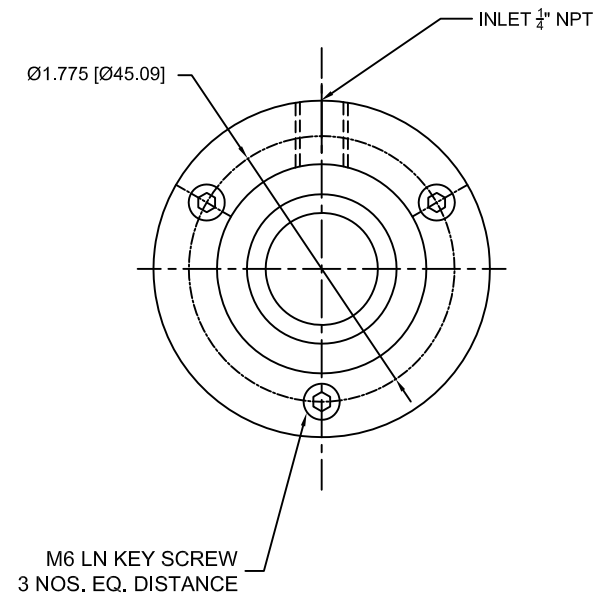
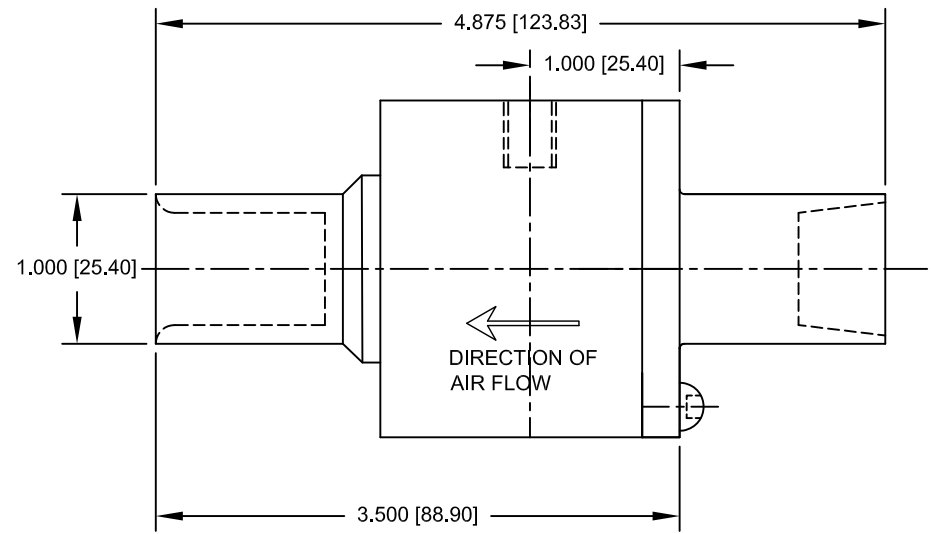


THIRD ANGLE PROJECTION		REQUIREMENTS—UNLESS OTHERWISE SPECIFIED				CONTRACT NUMBER	NEX FLOW AIR PRODUCTS CORP.					
		GENERAL				CLIENT	10520 YONGE STREET, UNIT 35B-220, RICHMOND HILL, ON L4C 3C7					
MATERIAL	ALUMINUM 6061 T6	1. DIMS ARE IN INCHES(MM)				CONTRACTOR	TEL.: (416) 410-1313 & FAX: (416) 410-1806 www.nex-flow.com					
		2. DIMENSIONING AND TOLERANCING IN ACCORDANCE WITH ANSI Y14.5 (1982)				DATE	08-04-11					
FINISH		3. MACHINING FINISH 125 MICRO INCH RMS				DESIGN	TITLE					
		4. INTERNAL RADI .015				CHECKED	OUTLINE DRAWING OF					
		5. BREAK SHARP CORNERS .005 TO .015				PROJECT	0.75" ALUMINUM RING VAC					
		LIMITS				STRESS	MANUFACTURING	SIZE	CAGE CODE	DWG NO	RELEASE	REV
		1. LINEAR DIMS.				—	—	C	—	30000	P	1
		.005				—	—	—	—	—	—	—
		.010				—	—	—	—	—	—	—
		.030				—	—	—	—	—	—	—
		2. ANGLES = ± 1/2°				—	—	—	—	—	—	—
		3. RUNOUT .010 TIR				—	—	—	—	—	—	—
		4. HOLES IN ACCORDANCE WITH AND 10387				—	—	—	—	—	—	—
		NEXT ASSEMBLY	USED ON	QTY PER ASSY	PART NO	MATERIALS	ELECTRICAL	SCALE	CAD NO	SHEET	OF	
								2:1	0.75"—ALRV	1	1	

8 7 6 5 4 3 2 1

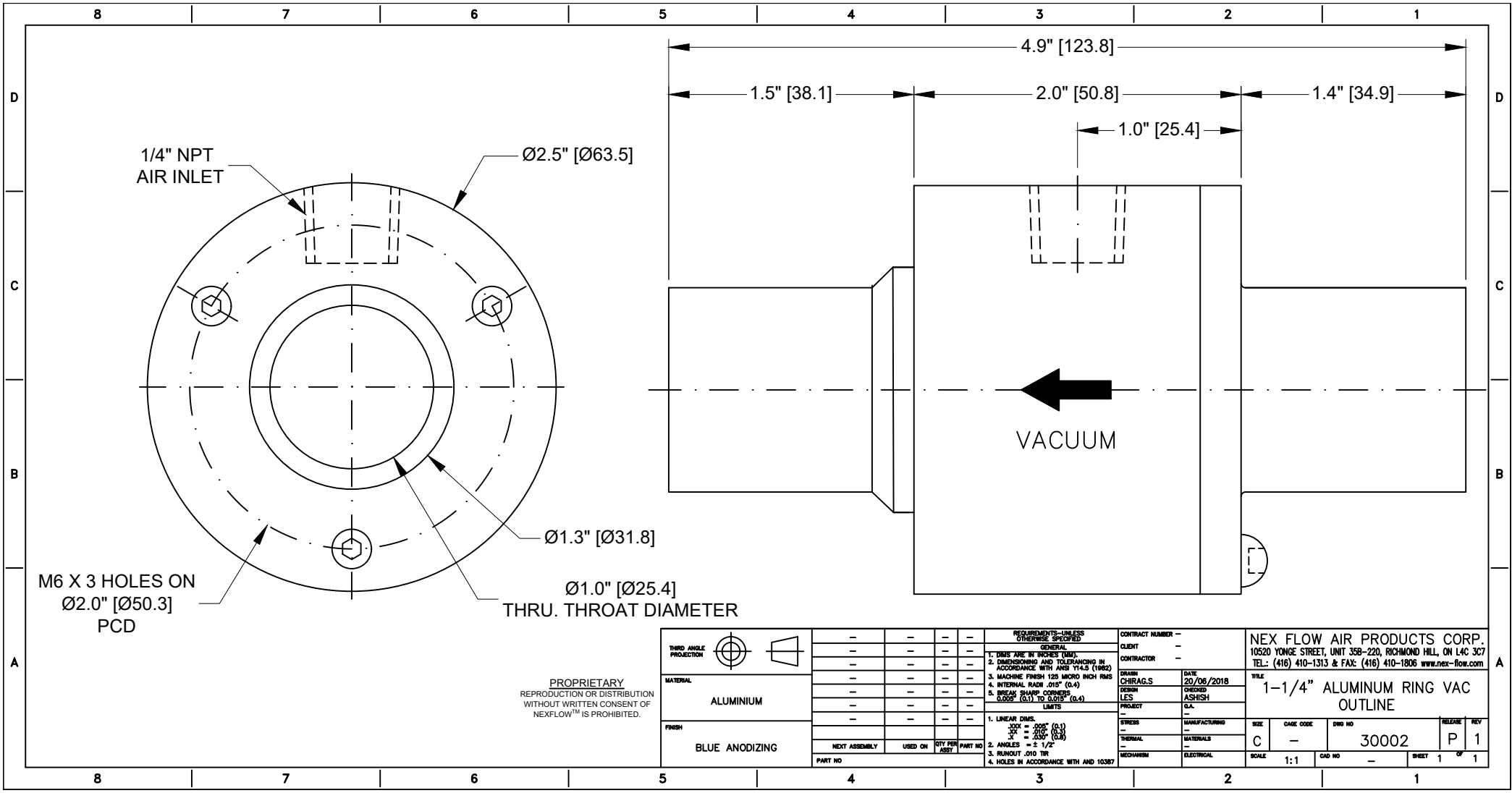
REVISIONS			
REV	DESCRIPTION	DATE	APPROVED

NOTES:  
 1 ALL DIMENSIONS SHOWN ARE FINISH OPERATIONAL DIMENSIONS WHICH INCLUDE RESIDUAL COATINGS UNLESS OTHERWISE SPECIFIED.



THIRD ANGLE PROJECTION		—	—	—	—	REQUIREMENTS—UNLESS OTHERWISE SPECIFIED	CONTRACT NUMBER	NEX FLOW AIR PRODUCTS CORP. 10520 YONGE STREET, UNIT 35B-220, RICHMOND HILL, ON L4C 3C7 TEL.: (416) 410-1313 & FAX: (416) 410-1806 www.nex-flow.com								
		—	—	—	—	GENERAL	CLIENT	TITLE OUTLINE DRAWING OF 1" ALUMINUM RING VAC								
MATERIAL	ALUMINUM 6061 T6	—	—	—	—	1. DIMS ARE IN INCHES(MM) 2. DIMENSIONING AND TOLERANCING IN ACCORDANCE WITH ANSI Y14.5 (1982) 3. MACHING FINISH 125 MICRO INCH RMS 4. INTERNAL RADI .015 5. BREAK SHARP CORNERS .005 TO .015	DATE	08-04-11	DESIGN	LES	CHECKED	—	PROJECT	—		
FINISH	—	—	—	—	—	LIMITS	PROJECT	—	DESIGN	LES	CHECKED	—	PROJECT	—		
—	—	—	—	—	—	1. LINEAR DIMS. XXX = .005 XX = .010 X = .030 2. ANGLES = ± 1/2° 3. RUNOUT .010 TIR 4. HOLES IN ACCORDANCE WITH AND 10387	STRESS	—	MANUFACTURING	—	SIZE	CAGE CODE	DWG NO	RELEASE	REV	
—	—	—	—	—	—		MECHANISM	ELECTRICAL	—	—	C	—	30001	P	1	
—	—	—	—	—	—						SCALE	2:1	CAD NO	1"—ALRV	SHEET	1 OF 1

8 7 6 5 4 3 2 1



1/4" NPT  
AIR INLET

Ø2.5" [Ø63.5]

Ø1.3" [Ø31.8]

M6 X 3 HOLES ON  
Ø2.0" [Ø50.3]  
PCD

Ø1.0" [Ø25.4]  
THRU. THROAT DIAMETER

VACUUM

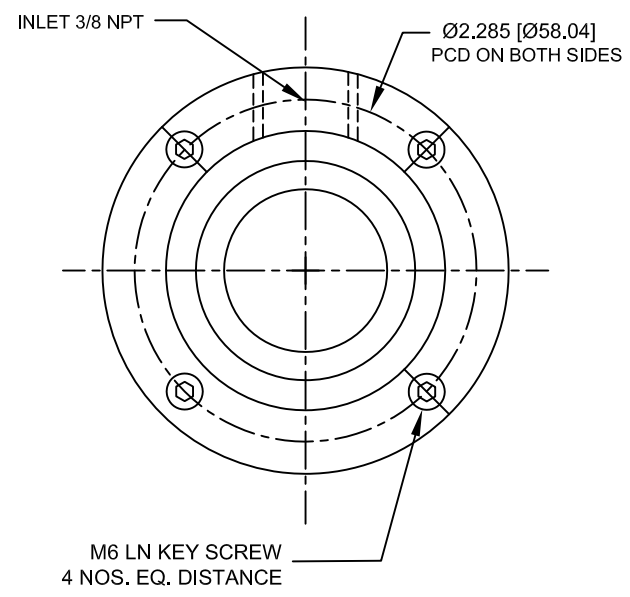
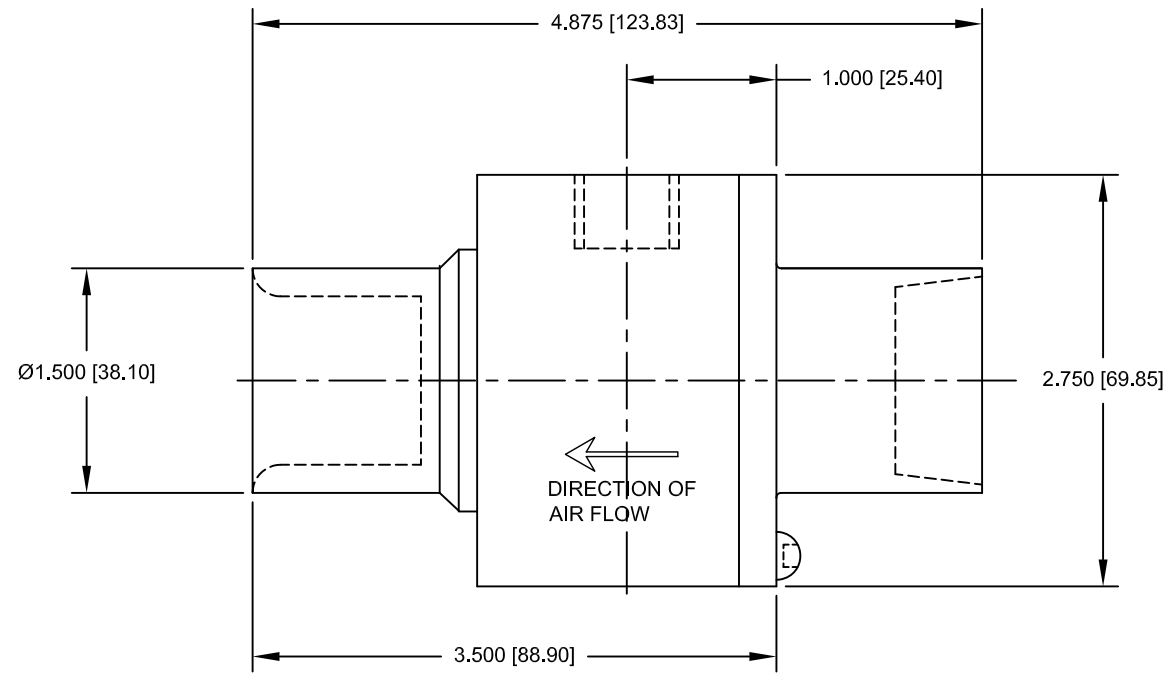
PROPRIETARY  
REPRODUCTION OR DISTRIBUTION  
WITHOUT WRITTEN CONSENT OF  
NEXFLOW™ IS PROHIBITED.

THIRD ANGLE PROJECTION		-	-	-	-	REQUIREMENTS—UNLESS OTHERWISE SPECIFIED	CONTRACT NUMBER	NEX FLOW AIR PRODUCTS CORP. 10520 YONGE STREET, UNIT 35B-220, RICHMOND HILL, ON L4C 3C7 TEL: (416) 410-1313 & FAX: (416) 410-1806 www.nex-flow.com					
MATERIAL	ALUMINIUM	-	-	-	-	GENERAL	CLIENT	DATE	TITLE				
FINISH	BLUE ANODIZING	-	-	-	-	1. DIMS ARE IN INCHES (MM)	CONTRACTOR	20/06/2018	1-1/4" ALUMINUM RING VAC OUTLINE				
		-	-	-	-	2. DIMENSIONING AND TOLERANCING IN ACCORDANCE WITH ANSI Y14.5 (1982)	DESIGN	ASHISH	SIZE	CASE CODE	DWG NO	RELEASE	REV
		-	-	-	-	3. MACHINE FINISH 125 MICRO INCH RMS	LES		C	-	30002	P	1
		-	-	-	-	4. INTERNAL RADIUS .015" (0.4)	PROJECT		SCALE	1:1	CAD NO	SHEET	1 OF 1
		-	-	-	-	5. BREAK SHARP CORNERS 0.005" (0.1) TO 0.015" (0.4)	C.A.						
		-	-	-	-	LIMITS	STRESS	MANUFACTURING					
		-	-	-	-	1. LINEAR DIMS.	—	MATERIALS					
		-	-	-	-	XXX = .005" (0.1)	MECHANISM	ELECTRICAL					
		-	-	-	-	XX = .010" (0.2)							
		-	-	-	-	X = .020" (0.5)							
		-	-	-	-	2. ANGLES = 2 1/2°							
		-	-	-	-	3. HOOKOUT .010 TH							
		-	-	-	-	4. HOLES IN ACCORDANCE WITH AND 10387							
		-	-	-	-								

8 7 6 5 4 3 2 1

REVISIONS			
REV	DESCRIPTION	DATE	APPROVED

NOTES:  
 1 ALL DIMENSIONS SHOWN ARE FINISH OPERATIONAL DIMENSIONS WHICH INCLUDE RESIDUAL COATINGS UNLESS OTHERWISE SPECIFIED.



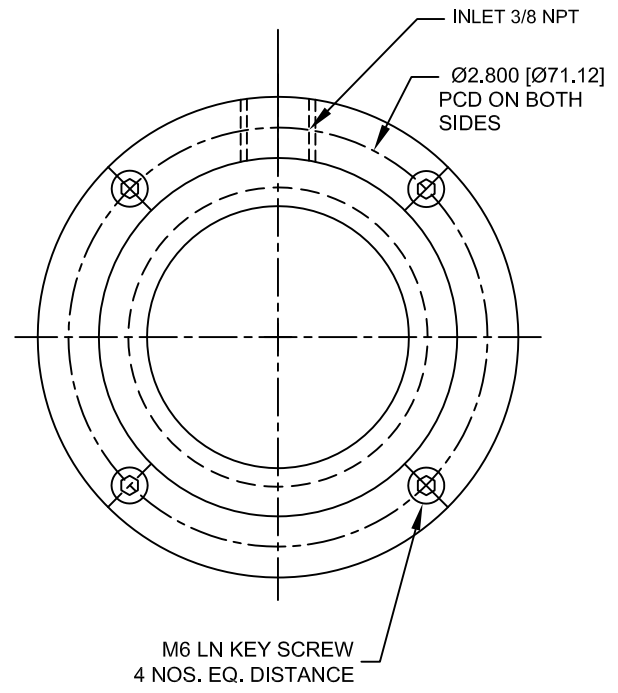
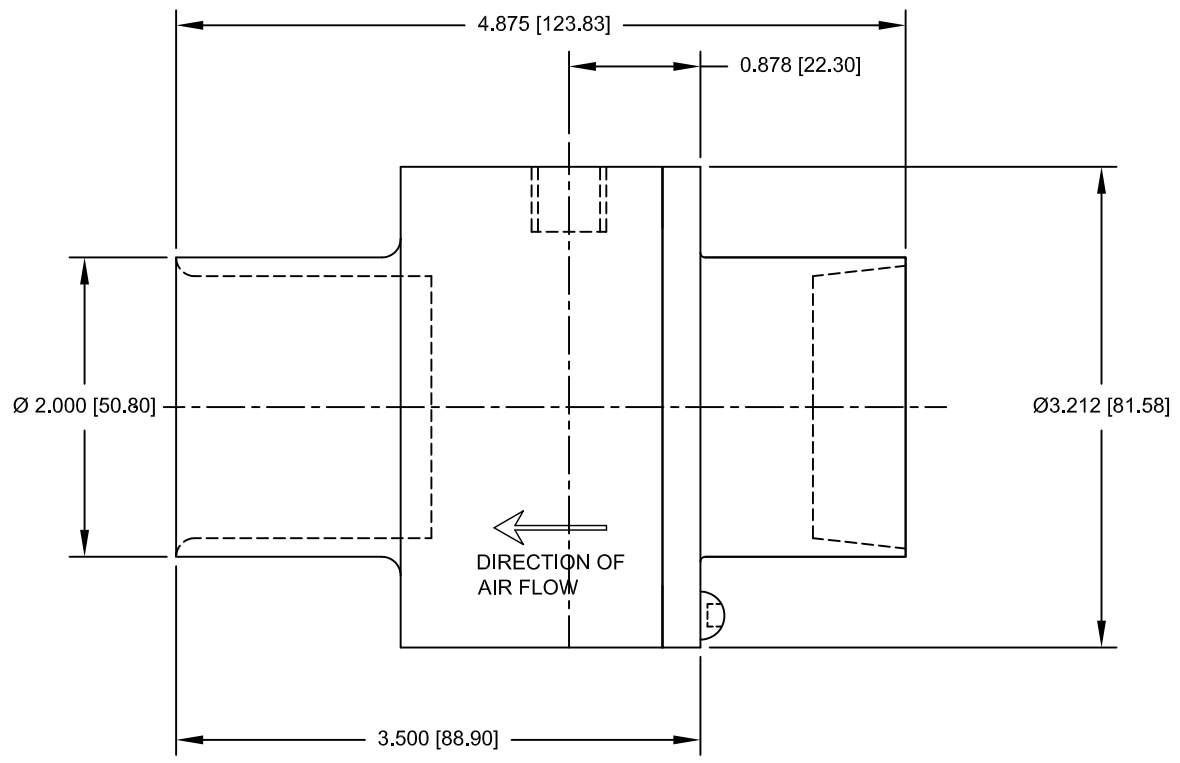
THIRD ANGLE PROJECTION		REQUIREMENTS—UNLESS OTHERWISE SPECIFIED	CONTRACT NUMBER	NEX FLOW AIR PRODUCTS CORP. 10520 YONGE STREET, UNIT 35B-220, RICHMOND HILL, ON L4C 3C7 TEL.: (416) 410-1313 & FAX: (416) 410-1806 www.nex-flow.com					
		GENERAL	CLIENT	TITLE OUTLINE DRAWING OF 1.5" ALUMINUM RING VAC					
MATERIAL	ALUMINUM 6061 T6	1. DIMS ARE IN INCHES(MM) 2. DIMENSIONING AND TOLERANCING IN ACCORDANCE WITH ANSI Y14.5 (1982) 3. MACHING FINISH 125 MICRO INCH RMS 4. INTERNAL RADI .015 5. BREAK SHARP CORNERS .005 TO .015	CONTRACTOR	DATE	08-04-11	DESIGN	LES		
FINISH	—	LIMITS	PROJECT	CHECKED	—	PROJECT	—		
		1. LINEAR DIMS. XXX = .005 XX = .010 X = .030 2. ANGLES = ± 1/2° 3. RUNOUT .010 TIR 4. HOLES IN ACCORDANCE WITH AND 10387	STRESS	MANUFACTURING	SIZE	CAGE CODE	DWG NO	RELEASE	REV
			THERMAL	MATERIALS	C	—	30003	P	1
			MECHANISM	ELECTRICAL	SCALE	2:1	CAD NO 1.5"—ALRV	SHEET	1 OF 1

8 7 6 5 4 3 2 1

8 7 6 5 4 3 2 1

REVISIONS			
REV	DESCRIPTION	DATE	APPROVED

NOTES:  
 1 ALL DIMENSIONS SHOWN ARE FINISH OPERATIONAL DIMENSIONS WHICH INCLUDE RESIDUAL COATINGS UNLESS OTHERWISE SPECIFIED.



THIRD ANGLE PROJECTION		—	—	—	—	REQUIREMENTS—UNLESS OTHERWISE SPECIFIED	CONTRACT NUMBER —	NEX FLOW AIR PRODUCTS CORP. 10520 YONGE STREET, UNIT 35B-220, RICHMOND HILL, ON L4C 3C7 TEL.: (416) 410-1313 & FAX: (416) 410-1806 www.nex-flow.com					
		—	—	—	—	GENERAL	CLIENT —						
MATERIAL ALUMINUM 6061 T6	—	—	—	—	—	1. DIMS ARE IN INCHES(MM)	CONTRACTOR —	DATE	TITLE OUTLINE DRAWING OF 2" ALUMINUM RING VAC				
		—	—	—	—	2. DIMENSIONING AND TOLERANCING IN ACCORDANCE WITH ASME Y14.5 (1982)	DESIGN	08-04-11					
FINISH —	—	—	—	—	—	3. MACHINE FINISH 125 MICRO INCH RMS	VERG	CHECKED	SIZE	CAGE CODE	DWG NO	RELEASE	REV
		—	—	—	—	4. INTERNAL RADI .015	LES	—	C	—	30004	P	1
—	—	—	—	—	—	5. BREAK SHARP CORNERS .005 TO .015	PROJECT	DRAWN	SCALE	CAD NO	SHEET	OF	OF
—	—	—	—	—	—	LIMITS	—	—	2:1	2"—ALRV	1	1	1
—	—	—	—	—	—	1. LINEAR DIMS. XXX = .005 XX = .010 X = .030	STRESS	MANUFACTURING					
—	—	—	—	—	—	2. ANGLES = ± 1/2°	THERMAL	MATERIALS					
—	—	—	—	—	—	3. RUNOUT .010 TIR	MECHANISM	ELECTRICAL					
—	—	—	—	—	—	4. HOLES IN ACCORDANCE WITH AND 10387	—	—					
—	—	—	—	—	—	PART NO	—	—					
—	—	—	—	—	—	NEXT ASSEMBLY	USED ON	QTY PER ASSY	PART NO				

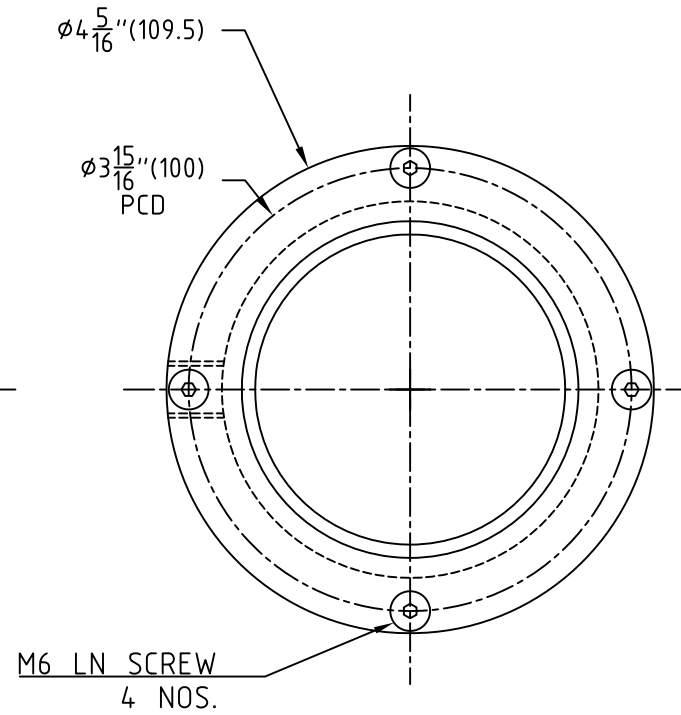
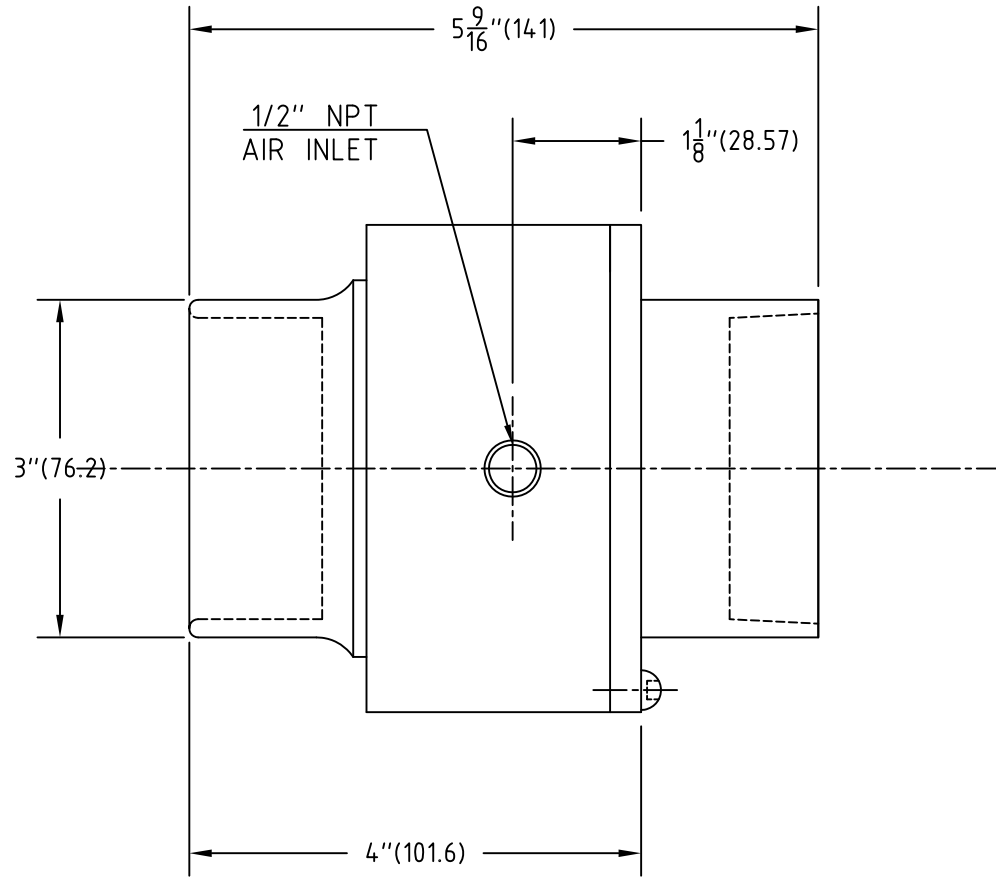
8 7 6 5 4 3 2 1





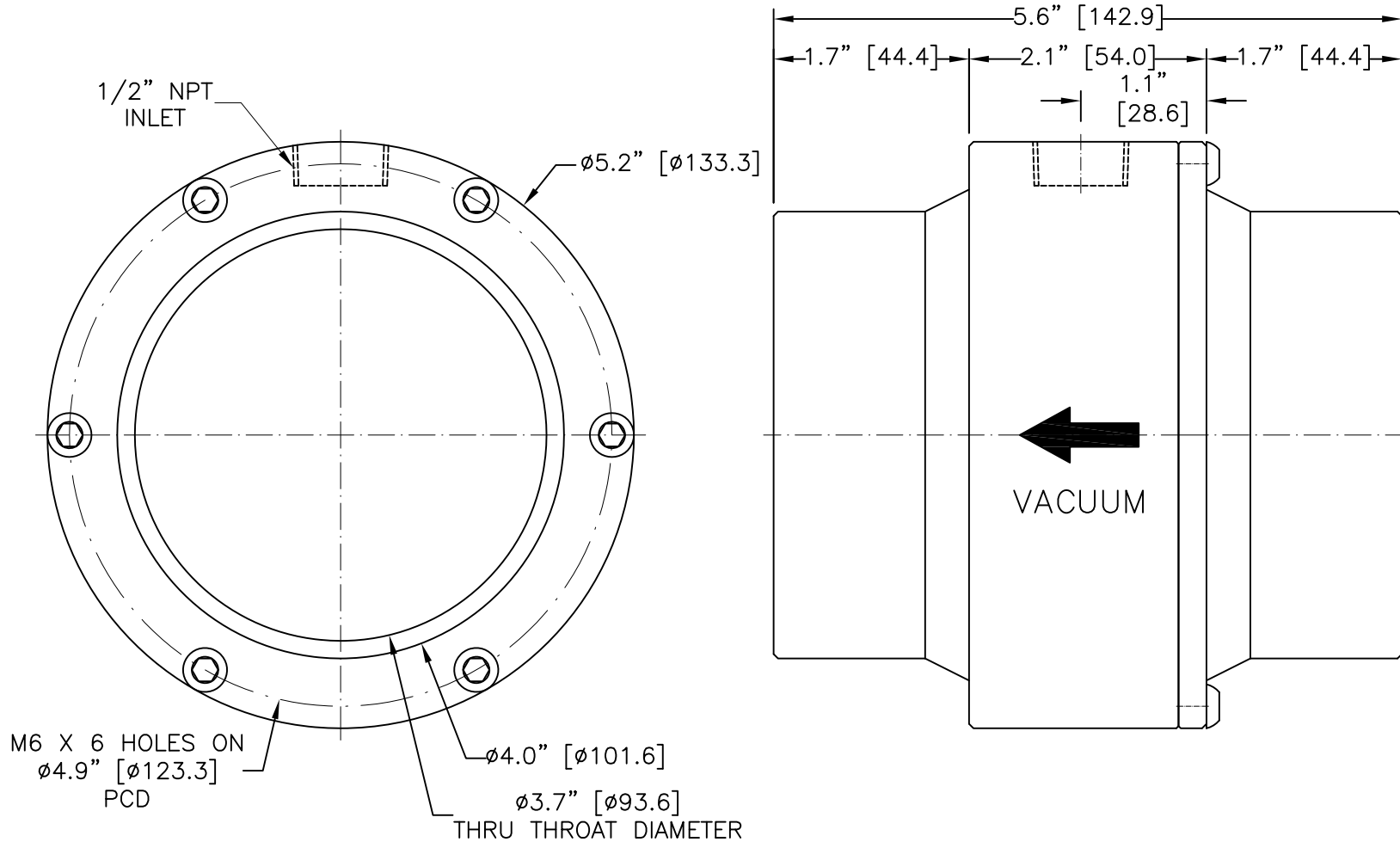
NOTES:

- 1 ALL DIMENSIONS SHOWN ARE FINISH OPERATIONAL DIMENSIONS WHICH INCLUDE RESIDUAL COATINGS UNLESS OTHERWISE SPECIFIED.



	---	---	---	---	---	REQUIREMENTS - UNLESS SPECIFIED OTHERWISE GENERAL 1. DIMS ARE IN INCHES UNLESS OTHERWISE SPECIFIED 2. DIMENSIONS AND TOLERANCES IN ACCORDANCE WITH ASME Y14.5 (2018) 3. MACHINING FROM THE MIND WITH THE 4. INTERNAL RADIUS .015 5. BREAK SHOWN CONSIDER JOB TO JOB LIMITS	CONTRACT NUMBER --- CLIENT --- CONTRACTOR ---	NEX FLOW AIR PRODUCTS CORP. 10520 YONGE STREET, UNIT 309-220, RICHMOND HILL, ON L4C 3C7 TEL.: (416) 410-1313 & FAX: (416) 410-1808 www.nex-flow.com				
	MATERIAL ALUMINUM 6061 T6	---	---	---	---	---	FINISH --- --- ---	DATE 08-04-11 DRAWN --- CHECKED --- DESIGNED --- PROJECT --- DRAWN BY --- CHECKED BY --- DESIGNED BY --- PROJECT ---	TITLE OUTLINE DRAWING OF 3" ALUMINUM RING VAC			
PART NO --- --- ---	NEXT ASSEMBLY --- --- ---	USED ON --- --- ---	PVT PART NO --- --- ---	PART NO --- --- ---	1. LINEAR DIMS: .005 = .005 .010 = .010 .020 = .020 2. ANGLES = ± 1/2° 3. HOLEY AND IN 4. HOLES IN ACCORDANCE WITH AND 10387	FINISH --- --- ---	CONTRACT NUMBER --- CLIENT --- CONTRACTOR ---	DATE CODE C ---	REV NO --- --- ---	PART NO 30006 ---	RELEASE P 1 ---	REV --- --- ---
8	7	6	5	4	3	2	1	1	1			

# 4" AL RV OUTLINE



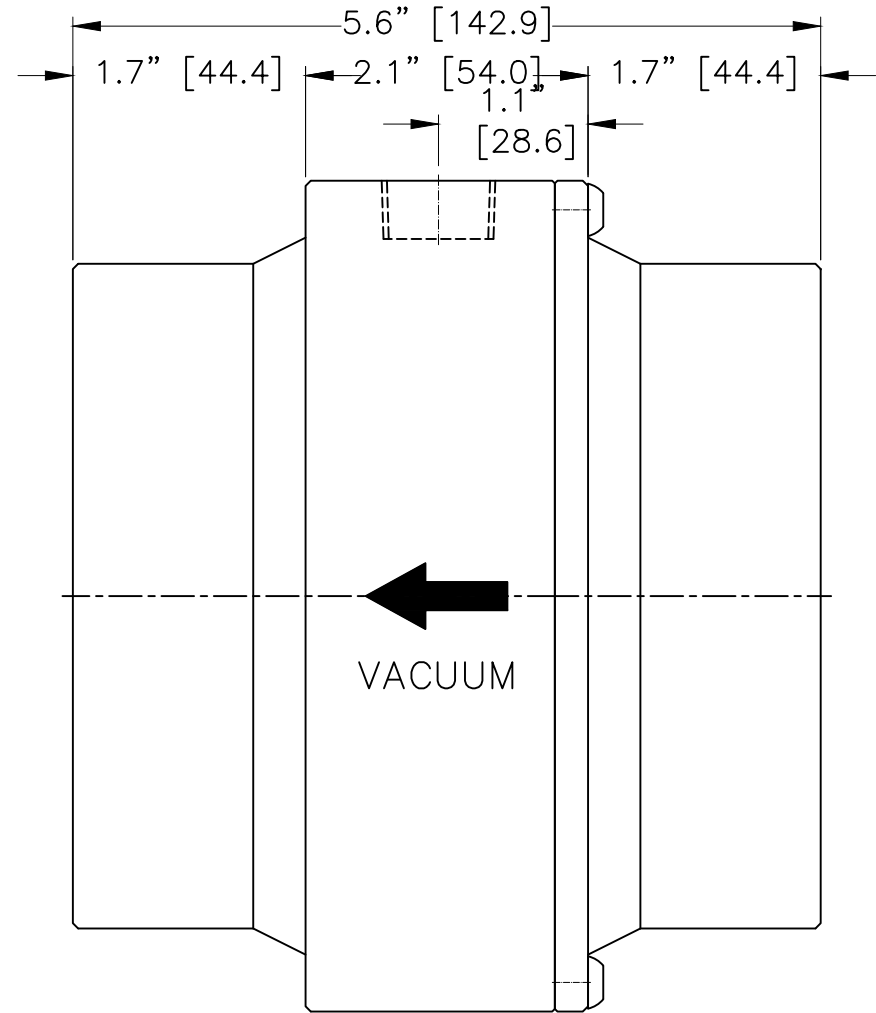
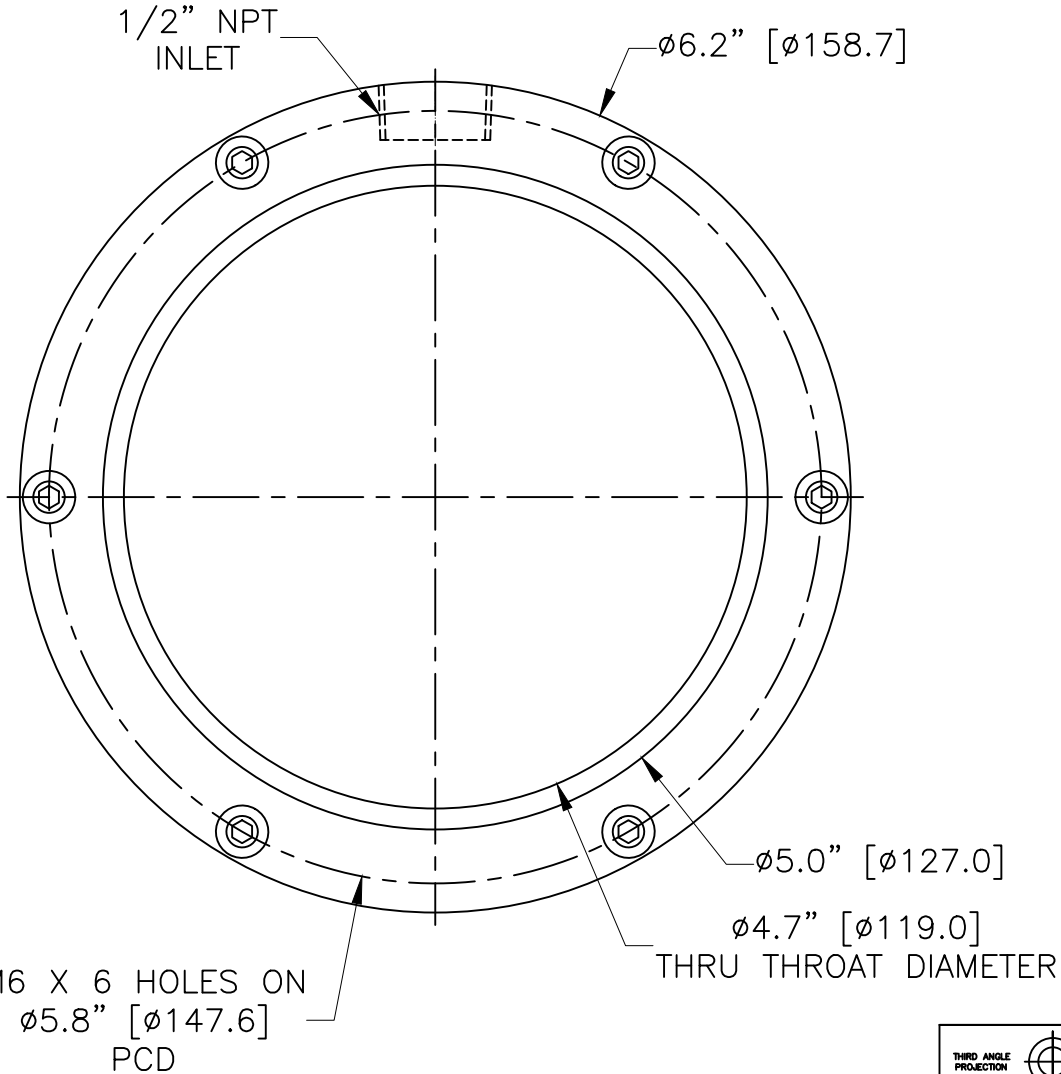
M6 X 6 HOLES ON  
 $\phi 4.9$ " [ $\phi 123.3$ ]  
 PCD

$\phi 3.7$ " [ $\phi 93.6$ ]  
 THRU THROAT DIAMETER

PROPRIETARY  
 REPRODUCTION OR DISTRIBUTION  
 WITHOUT WRITTEN CONSENT OF  
 NEXFLOW™ IS PROHIBITED.

THIRD ANGLE PROJECTION 	REQUIREMENTS—UNLESS OTHERWISE SPECIFIED GENERAL 1. DIMS ARE IN INCHES (DIM) 2. DIMENSIONING AND TOLERANCING IN ACCORDANCE WITH ANSI Y14.5 (1982) 3. MACHINE FINISH 125 MICRO INCH RMS 4. INTERNAL RADII .015" (0.4) 5. BREAK SHARP CORNERS 0.005" (0.1) TO 0.015" (0.4)	CONTRACT NUMBER — CLIENT — CONTRACTOR —	NEX FLOW AIR PRODUCTS CORP. 10520 YONGE STREET, UNIT 358-220, RICHMOND HILL, ON L4C 3C7 TEL.: (416) 410-1313 & FAX: (416) 410-1806 www.nex-flow.com			
	MATERIAL ALUMINIUM	LIMITS 1. LINEAR DIMS. .XXX = .005" (0.1) .XX = .010" (0.3) .X = .030" (0.8) 2. ANGLES = 3:1/2" 3. RUNOUT .010 TIR 4. HOLES IN ACCORDANCE WITH AND 10387	DATE 10/03/2018 DRAWN CHIRAG.S DESIGN — PROJECT — CHECKED ASHISH G.A.	TITLE 4" AL RING VAC OUTLINE		
FINISH BLUE ANODIZING	STRESS — THERMAL — MECHANISM —	MANUFACTURING — MATERIALS — ELECTRICAL —	SIZE C SCALE 1:1	CAGE CODE — DWG NO	PART NO 30007-OL SHEET 1 OF 1	RELEASE P REV 1

# 5" AL RV OUTLINE



PROPRIETARY  
REPRODUCTION OR DISTRIBUTION  
WITHOUT WRITTEN CONSENT OF  
NEXFLOW™ IS PROHIBITED.

THIRD ANGLE PROJECTION		REQUIREMENTS—UNLESS OTHERWISE SPECIFIED	CONTRACT NUMBER —	NEX FLOW AIR PRODUCTS CORP. 10520 YONGE STREET, UNIT 35B-220, RICHMOND HILL, ON L4C 3C7 TEL.: (416) 410-1313 & FAX: (416) 410-1806 www.nex-flow.com			
		GENERAL	CLIENT —	5" AL RING VAC OUTLINE			
MATERIAL	ALUMINIUM	1. DIMS ARE IN INCHES (DIM.)	CONTRACTOR —				
FINISH	BLUE ANODIZING	2. DIMENSIONING AND TOLERANCING IN ACCORDANCE WITH ANS Y14.5 (1982)	—	PROJECT	—	CHECKED	ASHISH
		3. MACHINE FINISH 125 MICRO INCH RMS	—	STRESS	—	MANUFACTURING	—
		4. INTERNAL RADII .015" (0.4)	—	THERMAL	—	MATERIALS	—
		5. BREAK SHARP CORNERS 0.005" (0.1) TO 0.015" (0.4)	—	MECHANISM	—	ELECTRICAL	—
		LIMITS	—	SCALE	1:1	DWG NO	—
		1. LINEAR DIMS.	—	SIZE	C	CAGE CODE	—
		.XXX = .005" (0.1)	—	PART NO	30008-OL	RELEASE	P
		.XX = .010" (0.3)	—	REV	1	SHEET	1
		.X = .030" (0.8)	—	OF	1		
		2. ANGLES = ± 1/2°	—				
		3. RUNOUT .010 TIR	—				
		4. HOLES IN ACCORDANCE WITH AND 10387	—				