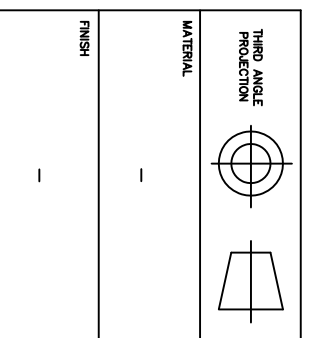
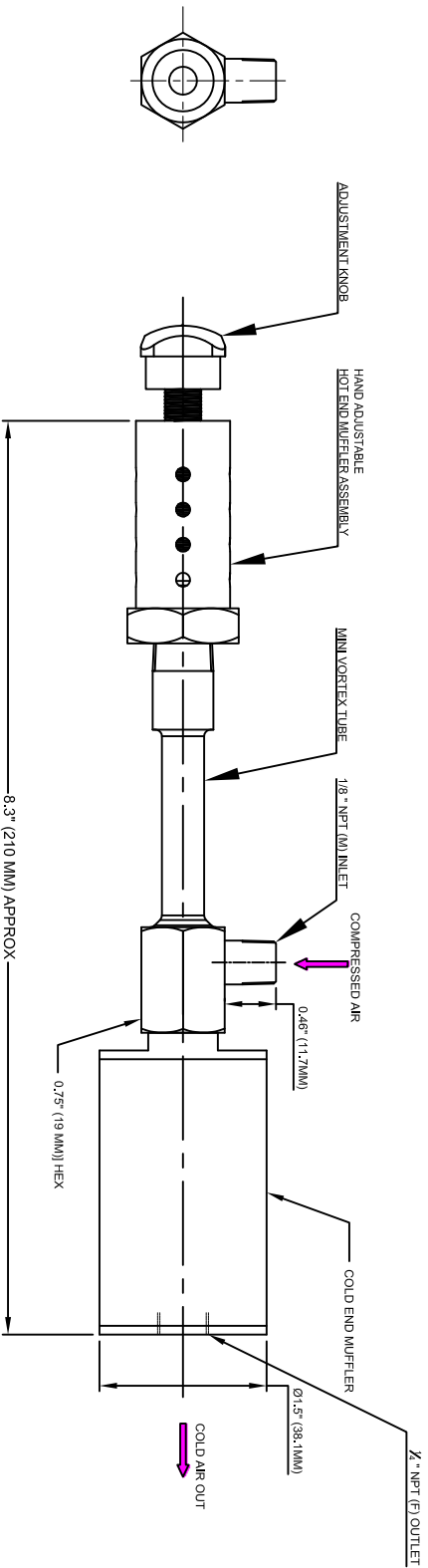


REVISIONS			
REV	DESCRIPTION	DATE	APPROVED
-	-	-	-

- NOTES:
- 1 ALL DIMENSIONS SHOWN ARE IN Inches (mm)
 - 2 ALL DIMENSIONS SHOWN ARE FINISH OPERATIONAL DIMENSIONS WHICH INCLUDE RESIDUAL COATINGS UNLESS OTHERWISE SPECIFIED.
 - 3 PART TO BE FLAT PACKED PROPERLY TO AVOID ANY DAMAGE WHILE SHIPPING & HANDLING.
 - 4 ALL HORIZONTAL DIMENSIONS ARE SYMMETRICAL ABOUT VERTICAL CENTER LINE UNLESS OTHERWISE SPECIFIED.



THIRD ANGLE PROJECTION	REQUIREMENTS-UNLESS OTHERWISE SPECIFIED
MATERIAL	1. DIMS ARE IN INCHES (MM)
FINISH	2. DIMENSIONING AND TOLERANCING IN ACCORDANCE WITH ANSI Y14.5 (1992)
	3. MACHINE FINISH 125 MICRO INCH RMS
	4. INTERNAL RADI 0.015
	5. BREAK SHARP CORNERS .005 TO .015
	LIMITS
	1. LINEAR DIMS XXX = .005 XX = .010 X = .030
	2. ANGLES = ± 1/2°
	3. ROUNDOFF .010 TIR
	4. HOLES IN ACCORDANCE WITH AND 10397
	CONTRACT NUMBER -
	CLIENT -
	CONTRACTOR -
	BRAND -
	CHIRAGS -
	DESIGN -
	DATE 22/08/2014
	DRAWN -
	CHECKED -
	ASHISH -
	PROJECT -
	Q.A. -
	MANUFACTURING -
	STRESS -
	THERMAL -
	MATERIALS -
	MECHANISM -
	ELECTRICAL -
	SCALE 1:1
	CAD NO SVT+AHM+CEM
	SHEET 1 OF 1
	RELEASE P
	REV -

NEX FLOW AIR PRODUCTS CORP.
 10520 YONGE STREET, UNIT 35B-220, RICHMOND HILL, ON L4C 3C7
 TEL: (416) 410-1313 & FAX: (416) 410-1806 www.nex-flow.com

TITLE
 SMALL VORTEX TUBE WITH GENERATOR,
 HAND ADJUSTABLE HOT END MUFFLER ASSEMBLY +
 COLD MUFFLER

8 7 6 5 4 3 2 1

A B C D E