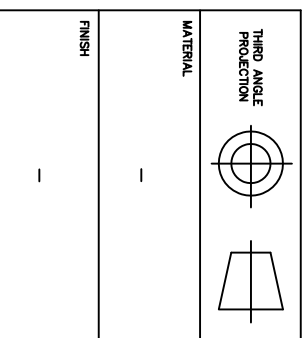
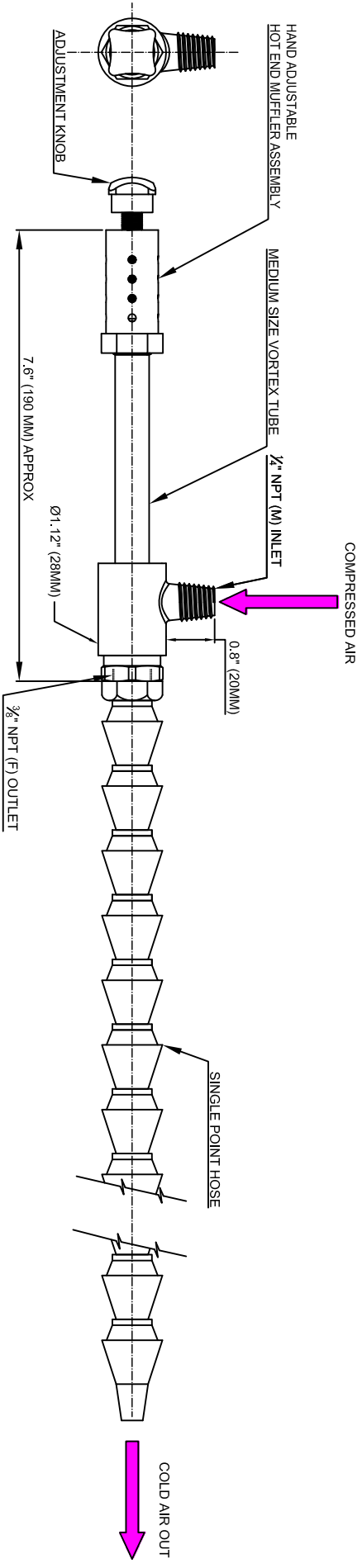


REVISIONS			
REV	DESCRIPTION	DATE	APPROVED
-	-	-	-

- NOTES:
- 1 ALL DIMENSIONS SHOWN ARE IN INCHES (MM)
 - 2 ALL DIMENSIONS SHOWN ARE FINISH OPERATIONAL DIMENSIONS WHICH INCLUDE RESIDUAL COATINGS UNLESS OTHERWISE SPECIFIED.
 - 3 PART TO BE FLAT PACKED PROPERLY TO AVOID ANY DAMAGE WHILE SHIPPING & HANDLING.
 - 4 ALL HORIZONTAL DIMENSIONS ARE SYMMETRICAL ABOUT VERTICAL CENTER LINE UNLESS OTHERWISE SPECIFIED.



THIRD ANGLE PROJECTION	---	---	---	---	---
MATERIAL	---	---	---	---	---
FINISH	---	---	---	---	---
PART NO	---	---	---	---	---
NEXT ASSEMBLY	---	---	---	---	---
USED ON	---	---	---	---	---
QTY PER PART NO	---	---	---	---	---

REQUIREMENTS-UNLESS OTHERWISE SPECIFIED	GENERAL
1. DIMS ARE IN INCHES (MM)	---
2. DIMENSIONING AND TOLERANCING IN ACCORDANCE WITH ANSI Y14.5 (1982)	---
3. MACHINE FINISH 125 MICRO INCH RMS	---
4. INTERNAL RADI R015	---
5. BREAK SHARP CORNERS .005 TO .015	---
LIMITS	---
1. LINEAR DIMS	XXX = .005 XX = .010 X = .030
2. ANGLES = ± 1/2°	---
3. RINOUT .010 TIR	---
4. HOLES IN ACCORDANCE WITH AND 10387	---

CONTRACT NUMBER	---
CLIENT	---
CONTRACTOR	---
BRAIN CHIRAGGS	---
DESIGN	---
DATE	10/11/2014
ORDERED	---
ASHISH	---
PROJEC	---
MANUFACTURING	---
STRESS	---
THERMAL	---
MATERIALS	---
MECHANISM	---
ELECTRICAL	---

NEX FLOW AIR PRODUCTS CORP.
 10520 YONCE STREET, UNIT 35B-220, RICHMOND HILL, ON L4C 3C7
 TEL.: (416) 410-1313 & FAX: (416) 410-1806 www.nex-flow.com

TITLE
 OUTLINE DRAWING OF
 MEDIUM VORTEX TUBE WITH GENERATOR
 HAND ADJUSTABLE HOT END MUFFLER ASSEMBLY +
 SINGLE POINT HOSE KIT

SCALE 1:1

SIZE C

CAGE CODE ---

DWG NO M-500XX+55003+59001

CAD NO MVT+AHFM+SPH

RELEASE P

REV ---

SHEET 1 OF 1