



NiceCutt

Milling Insert



Recommended Cutting Data

Workpiece Materials	Materials Hardness	Grade	Recommended Cutting Speed Vc (m/min)	mm/tooth			
				Light Cutting	Medium Cutting	Heavy Cutting	
P	Low Carbon Steel	≤HB180	NS4115 NS4125 NP115T	180 (150-220)	0.08 (0.05-0.15)	0.1 (0.08-0.15)	0.12 (0.08-0.2)
					0.08 (0.05-0.15)	0.12 (0.08-0.18)	0.15 (0.1-0.25)
					0.15 (0.1-0.25)	0.2 (0.15-0.3)	0.25 (0.2-0.35)
					0.18 (0.1-0.25)	0.25 (0.1-0.35)	0.3 (0.1-0.45)
	Carbon Steel, Alloy Steel	HB180-350	NS4115 NS4125	160 (140-200)	0.08 (0.05-0.15)	0.1 (0.08-0.15)	0.12 (0.08-0.2)
					0.08 (0.05-0.15)	0.12 (0.08-0.18)	0.15 (0.1-0.25)
					0.15 (0.1-0.25)	0.2 (0.15-0.3)	0.25 (0.2-0.35)
	Per-hardened Steel	HRC35-45	NS4115 NS4125	120 (100-160)	0.08 (0.05-0.15)	0.1 (0.08-0.15)	0.12 (0.08-0.2)
					0.08 (0.05-0.15)	0.12 (0.08-0.18)	0.15 (0.1-0.25)
0.15 (0.1-0.25)					0.2 (0.15-0.3)	0.25 (0.2-0.35)	
M	Stainless Steel (Ferrite, Martensite)	≤HB270	NS4115 NS4125	140 (120-180)	0.08 (0.05-0.15)	0.1 (0.08-0.15)	0.12 (0.08-0.2)
					0.08 (0.05-0.15)	0.12 (0.08-0.18)	0.15 (0.1-0.25)
					0.15 (0.1-0.25)	0.2 (0.15-0.3)	0.25 (0.2-0.35)
	Stainless Steel (Austenite, Diphasic)	≤HB270	NS4115 NS4125	120 (100-160)	0.08 (0.05-0.15)	0.1 (0.08-0.15)	0.12 (0.08-0.2)
					0.08 (0.05-0.15)	0.12 (0.08-0.18)	0.15 (0.1-0.25)
					0.15 (0.1-0.25)	0.2 (0.15-0.3)	0.25 (0.2-0.35)
K	Grey Cast Iron	≤HB280	NS4115 NS4125	180 (150-220)	0.08 (0.05-0.15)	0.1 (0.08-0.15)	0.12 (0.08-0.2)
					0.08 (0.05-0.15)	0.12 (0.08-0.18)	0.15 (0.1-0.25)
					0.15 (0.1-0.25)	0.2 (0.15-0.3)	0.25 (0.2-0.35)
	Nodular Cast Iron Vermicular Cast Iron	≤HB350	NS4115 NS4125	120 (100-180)	0.08 (0.05-0.15)	0.1 (0.08-0.15)	0.12 (0.08-0.2)
					0.08 (0.05-0.15)	0.12 (0.08-0.18)	0.15 (0.1-0.25)
					0.15 (0.1-0.25)	0.2 (0.15-0.3)	0.25 (0.2-0.35)
S	Heat-resistant Alloy and Titanium Alloy	HRC25-35	NS4115 NS4125	40 (30-60)	0.08 (0.05-0.15)	0.12 (0.08-0.18)	0.15 (0.1-0.25)
					0.1 (0.05-0.15)	0.12 (0.08-0.2)	0.15 (0.1-0.25)
					0.1 (0.05-0.15)	0.12 (0.08-0.2)	0.15 (0.1-0.25)
N	Aluminum Alloy	HB60-210	NN9115	500 (200-900)	0.15 (0.1-0.25)	0.2 (0.15-0.3)	0.25 (0.2-0.35)

★ Tool RPM (min⁻¹) = (1000 X Cutting Speed) / (3.14 X Diameter of Cutter)

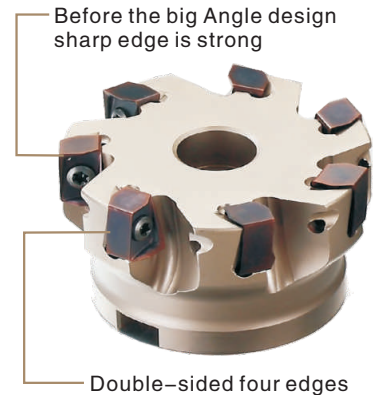
★ Workpiece Feed (mm/min) = Feed Per Tooth X Number Of Tooth X Tool RPM

Milling cutter

Two-side spiral blade 90 degree shoulder facing end mill— it is suitable for all kinds of plane, ladder, slotting machining, is in best efficiency and precision.

Main Characters

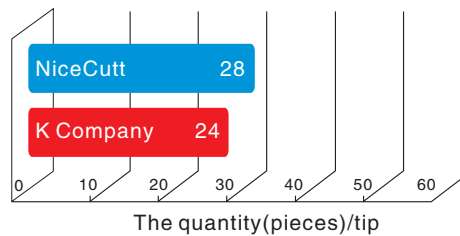
1. The inserts are in two-side and four-blade design, and they are thick and strong for deep milling process.
2. The design of swallow tail oblique trough, combined with insert repairing blade, could satisfy milling process for high finishing surface requirement.
3. Cutters adopt to orthogonal screw clamp to ensure higher clamp rigidity and safety.
4. Cutters' thick teeth design, combined with the design of low cutting resistance is a high process efficiency.
5. The model 06 thickness design could ensure the most cutting depth up to more than 10mm.
6. The diameter of cutter is from 40mm to 250mm, and it could cover the whole plane.



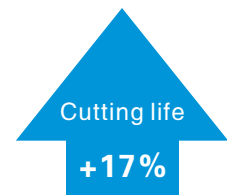
Case 1



Material Science	304 Stainless steel
Processing method	Slotting machining
Insert	ANMX080408-PDR-NS4125
Cutter head	BAN08-1616T2-160



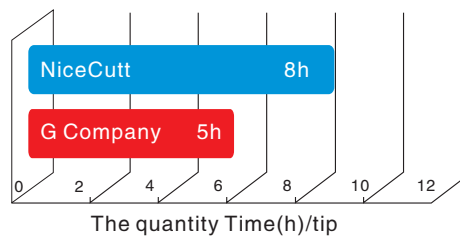
The cutting parameters
 $V_c=110\text{m/min}$
 $f_z=0.8\text{mm/t}$
 $a_p=1.2\text{mm}$
 $a_e=16\text{mm}$



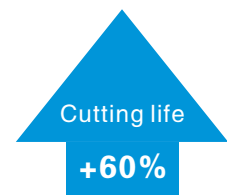
Case 2



Material Science	45# (HRC22)
Processing method	Face milling, dry cutting
Insert	ANMX160608-PDR-NS4125
Cutter head	BAN16D063T5-22



The cutting parameters
 $V_c=180\text{m/min}$
 $f=1.34\text{mm}$
 $a_p=1.5\text{mm}$
 $a_e=40\text{mm}$



Two face spiral blade 4S degree face milling cutter

It is suitable for all kinds of plane process, and it is used for many places. And we provide goods in high quality at good price. It can clamp two kind of inserts to the same retaining nest. The inserts are the two-side square ones with 8 cutting edges and the two-side octagonal ones with 16 cutting edges

Main characters

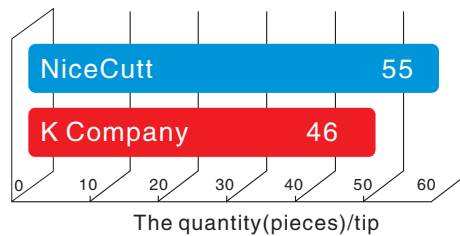
- Orthogonal screw clamp could ensure better clamp rigidity and safety.
- Thick tooth design makes much higher efficiency.
- Square inserts could cut 5mm in depth at most, and the orthogonal ones 3mm.
- One cutter with two kinds of inserts is suitable for roughing, semi-finishing and finishing.
- It is very economical, with 8 cutting edges and 16 cutting edges.
- It has repairing light blade inserts, and could lead to high quality.
- The diameter of cutter is from 40mm to 315mm, and it could cover the whole plane.



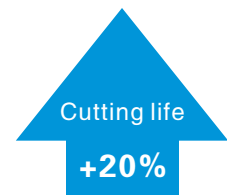
Case 1



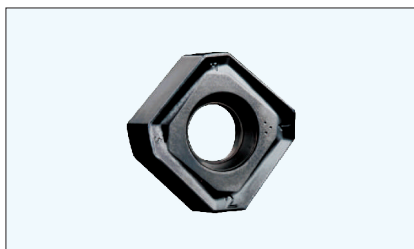
Material Science	HT300(HB230)
Processing method	Face milling, dry cutting
Insert	ONMU1205ANEN-NM-NS4125
Cutter head	SONFM45D080T06-27



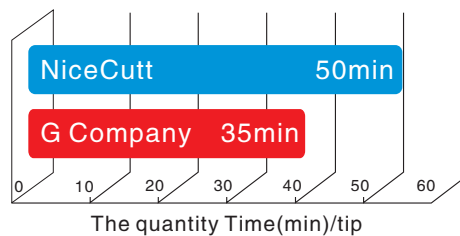
The cutting parameters
 $V_c=200\text{m/min}$
 $f_z=0.15\text{mm/t}$
 $a_p=3.5\text{mm}$
 $a_e=50\text{mm}$



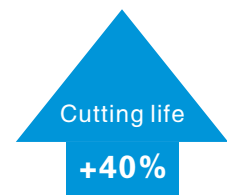
Case 2



Material Science	45# (HRC22)
Processing method	Face milling, dry cutting
Insert	SNMU1205ANEN-NM-NS4125
Cutter head	SONFM45D080T06-27

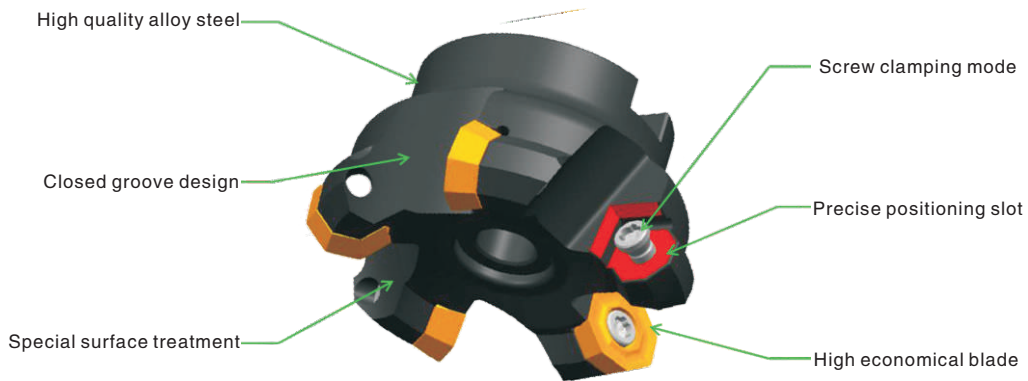


The cutting parameters
 $V_c=250\text{m/min}$
 $f_z=0.2\text{mm/t}$
 $a_p=2\text{mm}$
 $a_e=25\text{mm}$



ODKT Insert

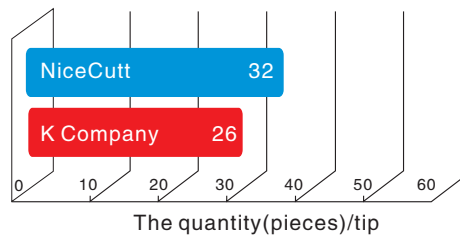
- The main angle is 43 DEG collocation type cutter body angle, ensuring quick cutting;
- The collocation excellent high universal brands: NS4115, NS4125; NN9115
- Is the most suitable for steel (P), stainless steel (M), iron (K), Aluminum Alloy (N) high economic face milling.



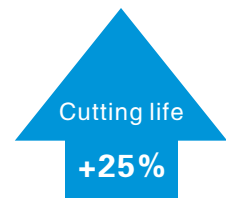
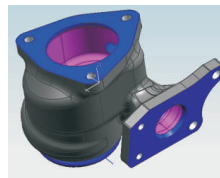
Case 1



Material Science	High temperature alloy steel (1.4839)
Processing method	Plane milling, finish machining
Insert	ODKT060508-NM-NS4125
Cutter head	FM45-D063T05-22-OD06



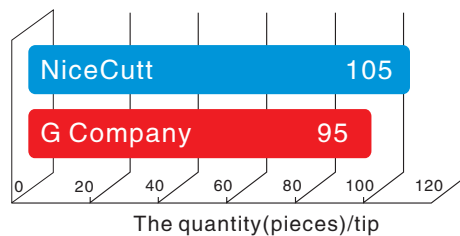
The cutting parameters
 $V_c=100\text{m/min}$
 $f_z=0.2\text{mm/t}$
 $a_p=1.5\text{mm}$
 $D=63\text{mm}$



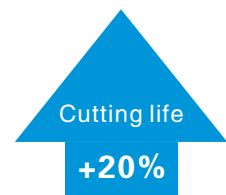
Case 2



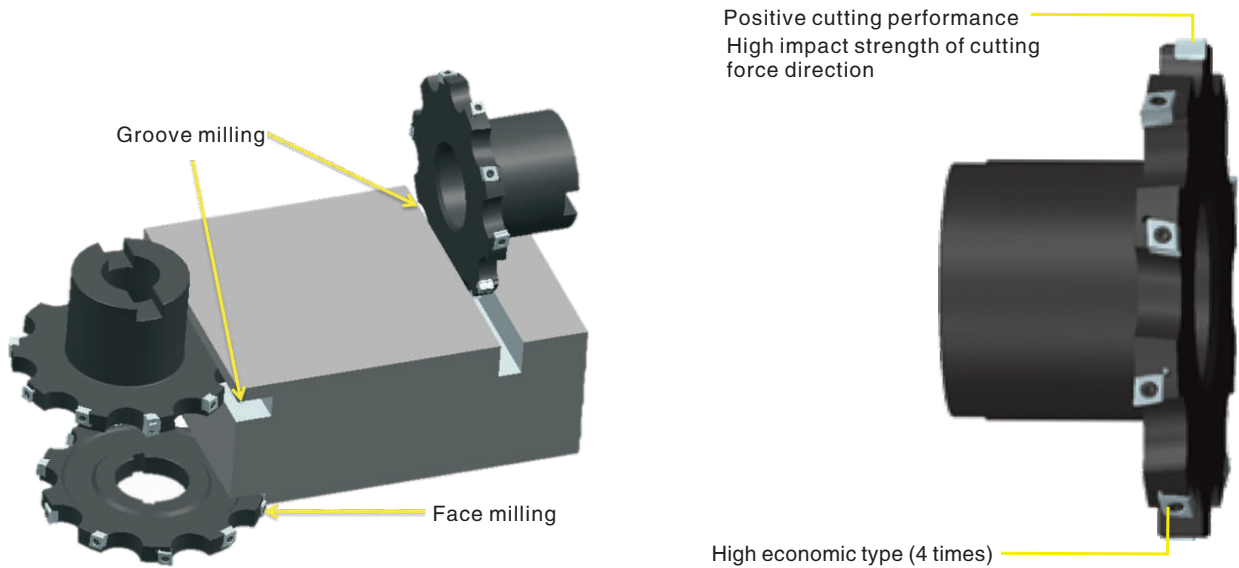
Material Science	45# (HRC22)
Processing method	Face milling, dry cutting
Insert	ONMU1205ANEN-NM-NS4125
Cutter head	SONFM45D080T06-27



The cutting parameters
 $V_c=130\text{m/min}$
 $f_z=0.2\text{mm/t}$
 $a_p=0.3\text{mm}$
 $a_e=80\text{mm}$



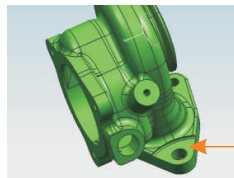
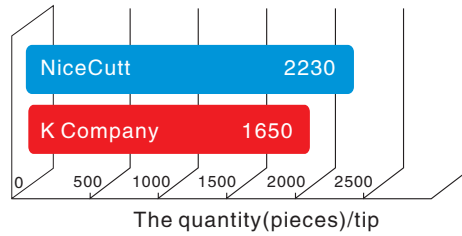
TMR series features



Case 1



Material Science	HT250 (HB180-230)
Processing method	Milling back
Insert	CNEU070508-NM-NS4125
Cutter head	TMR-080.H10.06T27-CN07



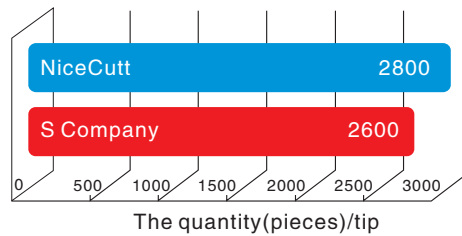
The cutting parameters
 $V_c=220\text{m/min}$
 $f_z=0.2\text{mm/t}$
 $a_p=3.5\text{mm}$
 $D=80\text{mm}$

Cutting life
+35%

Case 2



Material Science	HT250
Processing method	Milling back
Insert	CNEU070508-NM-NS4125
Cutter head	TMR-125.H10.10T32-CN07



The cutting parameters
 $V_c=220\text{m/min}$
 $f_z=0.2\text{mm/t}$
 $a_p=15\text{mm}$
 $a_e=125\text{mm}$

Cutting life
+6%

APMT/APGT**



F01

ANMX



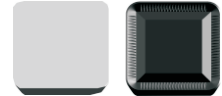
F01

SEEN/SEEX



F02

SPKN/SPER



F02

SPEN



F02

SEETPL**



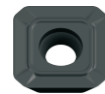
F03

SEETPM**



F03

SEETPK**



F03

SEETPH**



F03

SEETPG**



F03

SEETPL**



F03

SEETPW**



F03

SNEUNL**



F04

SNEUNM**



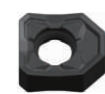
F04

SNEUNH**



F04

SNEUNW**



F04

SNMU/ONMU



F04

ODKTNL**



F05

ODKTNM**



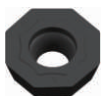
F05

ODKTNH**



F05

ODKTNB**



F05

TPKN/TPER



F05

RPET/RDETNL/NM**



F06/F07

RPEW/RDEW



F06/F07

RCETNE**



F06

RPETNH**



F06

RCETNM**



F06

RCETNK**



F06

RDETMH**



F07

RDEWBM**



F07

UDET/UDMT



F08

SDMTNM/NH**



F08

CNEU



F08

HNMX/SNEX



F09

SNEX



F09

QOHX



F10

QPHT



F10

MFT



F11

BF-P32**



F12

BAP/RP



F13

BFR



F14

BAP



F15/F16

BRP



F17/F18

BRD



F19/F20

DX45



F21

BTC



F21

TP



F22

BSC



F22

AJU



F23

ATS



F23

BUD



F24

BSD



F25

BAP



F26

BRP/BRD



F27

BAN



F29

BAN



F29

SONFM



F30

TFM55°



F30

SE12 45°



F31

BSE45°



F31

SE13 45°



F32

FM



F32

BM90°



F33

BM90°



F33

BT



F34

HMC



F34

HMC



F35

TMR



F35

SMR



F36

STF



F36

STF



F36

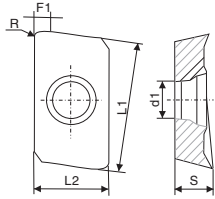
BBMS



F37

APMT

Shoulder Milling Inserts

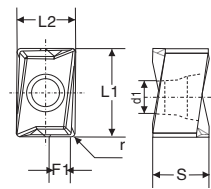


● continuous ◐ light Interruption ⊕ Interruption

Model	OrderingCode	Dimensions(mm)						Coated-PVD		Uncoated	Cermet
		L1	L2	S	F1	d1	R	NS4115	NS4125	NN9115	NP115T
	APMT1135PDER-PL	10.83	6.16	3.50	1.92	2.80	0.80	○	●		
	APMT1604PDER-PL	16.26	9.26	4.76	2.00	4.60	0.80	●	●		
	APMT1135PDER-PM	10.83	6.16	3.50	1.92	2.80	0.80	●	●		○
	APMT1604PDER-PM	16.26	9.26	4.76	2.00	4.60	0.80	●	●		○
	APMT1135PDER-PR	10.83	6.16	3.50	1.92	2.80	0.80	●	●		○
	APMT1604PDER-PR	16.26	9.26	4.76	2.20	4.40	0.80	●	●		○
	APGT1135PDFR-AL	10.83	6.16	3.50	1.92	2.80	0.80			●	
	APGT1604PDFR-AL	16.26	9.26	4.76	2.20	4.40	0.80			●	

ANMX

Shoulder Milling Inserts



● continuous ◐ light Interruption ⊕ Interruption

Model	OrderingCode	Dimensions(mm)						Coated-PVD		Uncoated	Cermet
		L1	L2	S	F1	d1	R	NS4115	NS4125	NN9115	NP115T
	ANMX080404-PDR	8.60	6.60	5.20	2.50	3.50	0.40	○	○		
	ANMX080408-PDR	8.60	6.60	5.20	2.50	3.50	0.80	●	●		
	ANMX130508-PDR	13.70	10.00	8.90	3.40	4.40	0.80	●	●		
	ANMX130512-PDR	13.70	10.00	8.90	3.40	4.40	1.20	○	○		
	ANMX160608-PDR	16.70	11.20	10.40	4.70	5.40	0.80	●	●		
ANMX160612-PDR	16.70	11.20	10.40	4.70	5.40	1.20	○	○			

● Stock ○ Available upon Order



Milling Insert

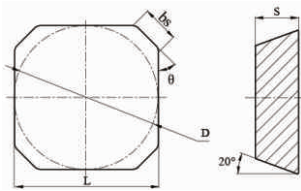
SEEN SPKN SPEN

Face Milling Inserts

● continuous

● light Interruption

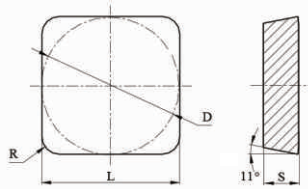
⊕ Interruption



P	Steel	●	●		●
M	Stainless Steel	●	●		
K	Cast Iron	●	●	●	
N	Non-ferrous Metal				
S	Heat-resistant Alloy, TiAlloy	●	●		
H	High Hardness Materials				

Model	OrderingCode	Dimensions(mm)					Coated-PVD		Uncoated	Cermet
		L	D	S	θ	bs	NS4115	NS4125	NN9115	NP115T
	SEEN1203AFTN	12.70	12.70	3.18	45°	2.30	○	○	○	○
	SEEN1204AFTN	12.70	12.70	4.76	45°	2.40	○	○	○	○
	SEEN1504AFTN	15.88	15.88	4.76	45°	2.40	○	○	○	○
	SEEX1203AFTN	12.70	12.70	3.18	45°	2.30	○	○	○	○

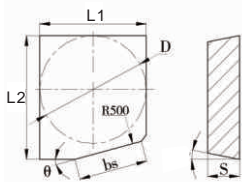
Face Milling Inserts



	OrderingCode	Dimensions(mm)					Coated-PVD		Uncoated	Cermet
		L	D	S	θ	R	NS4115	NS4125	NN9115	NP115T

	SPKN1203EDR	12.70	12.70	3.18	15°	1.40	○	○	○	○
	SPKN1203EDL	12.70	12.70	3.18	15°	1.40	○	○	○	○
	SPKN1504EDR	15.88	15.88	4.76	15°	1.40	○	○	○	○
	SPKN1504EDL	15.88	15.88	4.76	15°	1.40	○	○	○	○
	SPER1203EDTR-MR	12.70	12.70	3.18	15°	1.30		○		
	SPER1203EDTL-MR	12.70	12.70	3.18	15°	1.30		○		

Face Milling Inserts



	OrderingCode	Dimensions(mm)					Coated-PVD		Uncoated	Cermet
		L1	L2	D	S	θ	bs	NS4115	NS4125	NN9115

	SPEN1504EDR-W	15.88	18.20	15.88	4.76	15°	10.20	○	○	○	○
	SPEN1504EDL-W	15.88	18.20	15.88	4.76	15°	10.20	○	○	○	○

● Stock ○ Available upon Order

F

Milling Insert

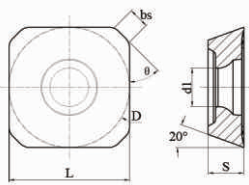
SEET

Face Milling Inserts

● continuous

◐ light Interruption

⊕ Interruption



P	Steel	●	◐		●
M	Stainless Steel	●	◐		
K	Cast Iron	●	◐		
N	Non-ferrous Metal			●	
S	Heat-resistant Alloy, TiAlloy	●	◐		
H	High Hardness Materials				

Model	OrderingCode	Dimensions(mm)						Coated-PVD		Uncoated	Cermet
		L	D	S	d1	θ	bs	NS4115	NS4125	NN9115	NP115T
	SEET1204AFEN-PL*	12.70	12.70	4.76	5.50	45°	2.50	●	○	○	○
	SEET1204AFEN-PL	12.70	12.70	4.76	5.50	45°	2.50			●	
	SEET13T3AGEN-PL	13.40	13.40	3.97	4.40	45°	1.70	●	●		○
	SEET13T3AGEN-PM	13.40	13.40	3.97	4.40	45°	1.20	●	●		
	SEET13T3AGSN-PK	13.40	13.40	3.97	4.40	45°	1.30	○	●		
	SEET13T3AGSN-PH	13.40	13.40	3.97	4.40	45°	1.30	○	●		
	SEET13T3AGSN-PG	13.40	13.40	3.97	4.40	45°	1.30	○	●		
	SEET13T3AGFN-AL	13.40	13.40	3.97	4.40	45°	2.20			●	
	SEET13T3AGEN-PW	7.69	13.40	3.97	4.40	45°	2.20	○	●		

● Stock ○ Available upon Order



Milling Insert

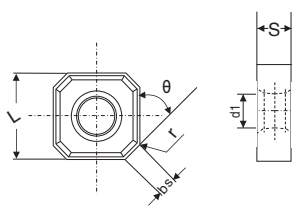
SNEU

Face Milling Inserts

● continuous

◐ light Interruption

⊕ Interruption

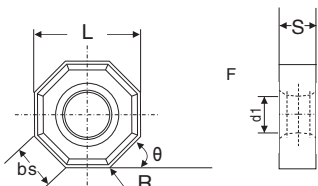


P	Steel	●	◐		
M	Stainless Steel	●	◐		
K	Cast Iron	●	◐		
N	Non-ferrous Metal			●	
S	Heat-resistant Alloy, TiAlloy	●	◐		
H	High Hardness Materials				

Model	OrderingCode	Dimensions(mm)						Coated-PVD		Uncoated	Cermet
		L	S	d1	θ	bs	R	NS4115	NS4125	NN9115	NP115T
	SNEU1205ANEN-NL	12.70	6.35	6.00	45°	2.20	0.80	◐	●		
	SNEU1205ANEN-NM	12.70	6.35	6.00	45°	2.20	0.80	◐	●		
	SNEU1205ANSN-NH	12.70	6.35	6.00	45°	2.20	0.80	◐	●		
	SNEU1205ANFN-NL	12.70	6.35	6.00	45°	2.20	0.80			●	
	SNEU1205ANEN-NW	12.70	6.35	6.00	45°	5.60	0.80	●	●		
	SNMU1205ANER-NM	12.90	5.50	6.00	45°	3.00	0.50	●	●		

ONMU

Face Milling Inserts



Model	OrderingCode	Dimensions(mm)						Coated-PVD		Uncoated	Cermet
		L	S	d1	θ	bs	R	NS4115	NS4125	NN9115	NP115T

	ONMU1205ANEN-NM	12.90	5.50	6.00	45°	5.00	0.50	●	●		

● Stock ◐ Available upon Order

F

Milling Insert

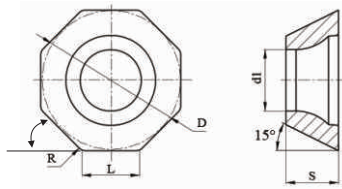
ODKT TPKN

Face Milling Inserts

● continuous

◐ light Interruption

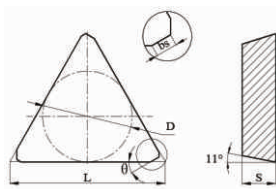
⊕ Interruption



P	Steel	●	◐	
M	Stainless Steel	●	◐	
K	Cast Iron	●	◐	●
N	Non-ferrous Metal			●
S	Heat-resistant Alloy, TiAlloy	●	◐	
H	High Hardness Materials			

Model	OrderingCode	Dimensions(mm)						Coated-PVD		Uncoated	Cermet
		L	D	S	d1	θ	R	NS4115	NS4125	NN9115	NP115T
	ODKT060508-NL	6.50	15.88	5.56	5.56	45°	0.80	○	●		
	ODKT060508-NM	6.50	15.88	5.56	5.56	45°	0.80	○	●		
	ODKT060508-NH	6.50	15.88	5.56	5.56	45°	0.80	○	●		
	ODKT060508-NL	6.50	15.88	5.56	5.56	45°	0.80			●	
	ODKT060508-NW	5.20	12.70	3.97	4.40	45°	0.50		●		

Face Milling Inserts



Model	OrderingCode	Dimensions(mm)					Coated-PVD		Uncoated	Cermet
		L	D	S	θ	bs	NS4115	NS4125	NN0115	NP115T
	TPKN1603PDR	16.50	9.53	3.18	30°	1.30			●	
	TPKN2204PDR	22.00	12.70	4.76	30°	1.40			●	
	TPER1603PDTR-NR	16.50	9.53	3.18	30°	1.30			●	

● Stock ○ Available upon Order

F

Milling Insert



Milling Insert

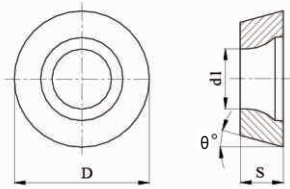
RPET/RPEW/RCET

Profiling Milling Inserts

● continuous

● light Interruption

⊕ Interruption



P	Steel	●	●		
M	Stainless Steel	●	●		
K	Cast Iron	●	●		
N	Non-ferrous Metal				
S	Heat-resistant Alloy, TiAlloy	●	●		
H	High Hardness Materials				

Model	OrderingCode	Dimensions(mm)				Coated-PVD		Uncoated	Cermet
		D	S	d1	θ	NS4115	NS4125	NN9115	NP115T
	RPET1003M0-NL	10.00	3.18	4.40	11°	○	●		
	RPET1204M0-NL	12.00	4.76	4.40	11°	○	●		
	RPET08T2M0-NM	8.00	2.78	2.94	11°	○	○		
	RPET1003M0T-NM	10.00	3.18	4.40	11°	○	●		
	RPMT1003M0T-NM	10.00	3.18	4.40	11°	●	●		
	RPET1204M0-NM	12.00	4.76	4.40	11°	●	●		
	RPMT1204M0-NM	12.00	4.76	4.40	11°	○	●		
	RPET1204M0T-NM	12.00	4.76	4.40	11°	○	●		
	RPET1606M0T-MM	16.00	6.35	5.50	11°	○	●		
	RPEW08T2M0	8.00	2.78	2.94	11°	○	○		
	RPEW1003M0	10.00	3.18	4.40	11°	○	●		
	RPEW10T3M0	10.00	3.18	4.40	11°	○	●		
	RPMW10T3M0	10.00	3.18	4.40	11°	●	●		
	RPEW1204M0T	12.00	4.76	4.40	11°	●	●		
	RPMW1204M0T	12.00	4.76	4.40	11°	●	●		
	RPET1606M0T-NH	16.00	6.35	5.50	11°	○	●		
	RCET10T3M0-NE	10.00	3.97	4.40	7°	●	●		
	RCET1204M0-NE	12.00	4.76	4.00	7°	○	●		
	RCET1204M0-NM	12.00	4.76	4.00	7°	●	○		
	RCET1606M0T-NK	16.00	6.35	5.50	7°	○	○		

● Stock ○ Available upon Order

F

Milling Insert

RDET/RDEW/RDMW

Profiling Milling Inserts

● continuous

◐ light Interruption

⊕ Interruption

	P	Steel	●	◐		
	M	Stainless Steel	●	◐		
	K	Cast Iron	●	◐		
	N	Non-ferrous Metal				
	S	Heat-resistant Alloy, TiAlloy	●	◐		
	H	High Hardness Materials				

Model	OrderingCode	Dimensions(mm)				Coated-PVD		Uncoated	Cermet
		D	S	d1	θ	NS4115	NS4125		
	RDET0803M0-NL	8.00	3.18	2.94	15°	○	○		
	RDET10T3M0-NL	10.00	3.97	4.40	15°	○	●		
	RDET1204M0-NL	12.00	4.76	4.40	15°	○	●		
	RDET1604M0-NL	16.00	4.76	5.50	15°	○	●		
	RDET0802M0-NM*	8.00	2.38	2.94	15°	●			
	RDET0803M0-NM	8.00	3.18	2.94	15°	○	○		
	RDET10T3M0-NM	10.00	3.97	4.40	15°	●	●		
	RDMT10T3M0-NM	10.00	3.97	4.40	15°	●	●		
	RDET1204M0-NM	12.00	4.76	4.40	15°	●	●		
	RDMT1204M0-NM	12.00	4.76	4.40	15°	●	●		
	RDET1604M0-NM	16.00	4.76	5.50	15°	○	●		
	RDET1204M0T-NH	12.00	4.76	4.40	15°	●			
	RDEW0501M0	5.00	1.51	2.20	15°	●	○		
	RDEW0702M0	7.00	2.38	2.80	15°	●	○		
	RDEW1003M0*	10.00	3.18	4.40	15°	○	○		
	RDEW0702M0T	7.00	2.38	2.80	15°	○	○		
	RDEW0803M0T	8.00	3.18	2.94	15°	●	○		
	RDEW10T3M0T	10.00	3.97	4.40	15°	●	●		
	RDEW1204M0T	12.00	4.76	4.40	15°	●	●		
	RDEW1604M0T	16.00	4.76	5.50	15°	●	●		
	RDMW1204M0T-BM	12.00	4.76	4.40	15°	●	●		
	RDMW1605M0T-BM*	16.00	5.56	5.50	15°	●	●		
	RDMW10T3M0T	10.00	3.97	4.40	15°	●	●		
	RDMW1604M0T	16.00	4.76	5.50	15°	○	●		

● Stock ○ Available upon Order

F

Milling Insert



Milling Insert

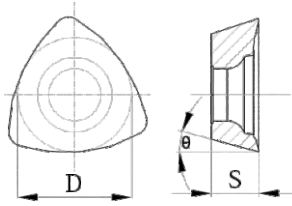
UDET/UDMT SDMT CNEU

Face Milling Inserts

● continuous

● light Interruption

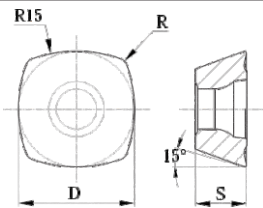
⊕ Interruption



P	Steel	●	●		
M	Stainless Steel	●	●		
K	Cast Iron	●	●		
N	Non-ferrous Metal				
S	Heat-resistant Alloy, TiAlloy	●	●		
H	High Hardness Materials				

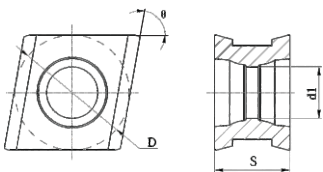
Model	OrderingCode	Dimensions(mm)				Coated-PVD		Uncoated	Cermet
		D	S	d1	θ	NS4115	NS4125	NN9115	NP115T
	UDET080308-NM	6.80	3.18	2.94	15°	●	●		
	UDET12T312-NM	9.60	3.97	4.40	15°	●	●		
	UDMT080308T-NH	6.80	3.18	2.94	15°	●	●		
	UDMT12T312T-NH	9.60	3.97	4.40	15°	●	●		

Face Milling Inserts



Model	OrderingCode	Dimensions(mm)					Coated-PVD		Uncoated	Cermet
		D	S	d1	θ	R	NS4115	NS4125	NN9115	NP115T
	SDMT120512-NM	12.7	5.56	4.40	15°	1.20	●	●		
	SDMT150512-NM	15.88	5.56	5.50	15°	1.20	●	●		
	SDMT120512-NH	12.7	5.56	4.40	15°	1.20	●	●		
	SDMT150512-NH	15.88	5.56	5.50	15°	1.20	●	●		

Face Milling Inserts



Model	OrderingCode	Dimensions(mm)					Coated-PVD		Uncoated	Cermet
		D	S	d1	θ	R	NS4115	NS4125	NN9115	NP115T
	CNEU070508-NM	7.60	5.00	3.40	80°	0.80	○	●		

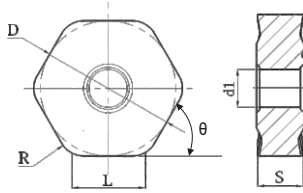
● Stock ○ Available upon Order

F

Milling Insert

HNMX SNEX

Face Milling Inserts



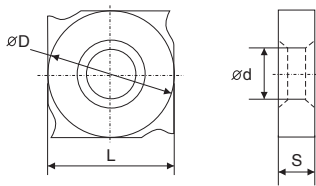
● continuous ◐ light Interruption ⊕ Interruption

P	Steel	●	◐	●	◐
M	Stainless Steel			●	◐
K	Cast Iron			●	◐
N	Non-ferrous Metal				
S	Heat-resistant Alloy, TiAlloy			●	◐
H	High Hardness Materials				

Model	OrderingCode	Dimensions(mm)						Coated-CVD		Coated-PVD	
		L	D	S	d1	θ	R	NP1115	NP1225	NS4115	NS4125
	HNMX050410-NM	7.10	12.70	5.00	5.00	55°	1.00	○	○	○	●

SNEX

Shoulder Milling Inserts



P	Steel	●	◐	●	◐
M	Stainless Steel			●	◐
K	Cast Iron			●	◐
N	Non-ferrous Metal				
S	Heat-resistant Alloy, TiAlloy			●	◐
H	High Hardness Materials				

Model	OrderingCode	Dimensions(mm)				Coated-CVD		Coated-PVD	
		D	L	S	d1	NP1115	NP1225	NS4115	NS4125
	SNEX1202-GM	12.70	12.70	2.30	5.00	○	●	○	●
	SNEX1203-GM	12.70	12.70	3.00	5.00	○	●	○	●
	SNEX12T3-GM	12.70	12.70	3.50	5.00	○	●	○	●
	SNEX1204-GM	12.70	12.70	4.00	5.00	○	●	○	●
	SNEX12T4-GM	12.70	12.70	4.50	5.00	○	●	○	●

● Stock ○ Available upon Order



Milling Insert

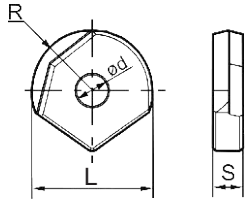
QOHX

Shoulder Milling Inserts

● continuous

◐ light Interruption

⊕ Interruption



P	Steel				●
M	Stainless Steel				◐
K	Cast Iron				◑
N	Non-ferrous Metal				
S	Heat-resistant Alloy, TiAlloy				◐
H	High Hardness Materials				

Model	OrderingCode	Dimensions(mm)				Coated-CVD		Coated-PVD	
		L	S	d	R	NP1115	NP1125	NS4115	NS4125
	P3201-D10	10.00	3.00	4.00	5.00				●
	P3201-D12	12.00	3.00	4.00	6.00				●
	P3201-D16	16.00	4.00	5.00	8.00				●
	P3201-D20	20.00	5.00	5.00	10.00				●
	P3201-D25	25.00	6.00	6.00	12.50				●
	P3201-D32	32.00	7.00	8.00	16.00				●

F

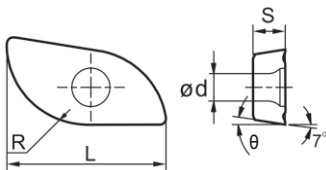
QPHT

Face Milling Inserts

● continuous

◐ light Interruption

⊕ Interruption



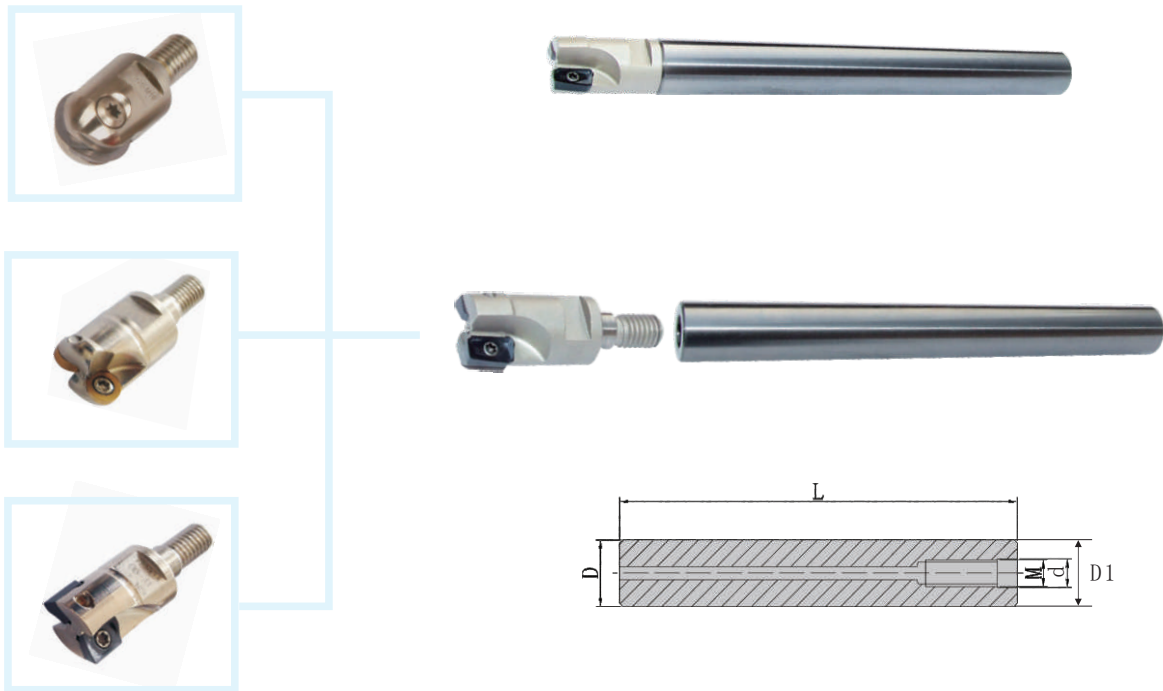
P	Steel					●
M	Stainless Steel					◐
K	Cast Iron					◑
N	Non-ferrous Metal					
S	Heat-resistant Alloy, TiAlloy					◐
H	High Hardness Materials					

Model	OrderingCode	Dimensions(mm)					Coated-CVD		Coated-PVD	
		L	R	S	d1	θ	NP1115	NP1125	NS4115	NS4125
	QPHT1603-NM	16.00	8.00	3.18	3.10	9°				●
	QPHT20T3-NM	20.00	10.00	3.97	4.00	9°				●
	QPHT2504-NM	25.00	12.50	4.76	4.70	9°				●
	QPHT3006-NM	30.00	15.00	6.35	5.80	11°				●
	QPHT3206-NM	32.00	16.00	6.35	5.80	9°				●
	QPHT4007-NM	40.00	20.00	7.94	6.70	9°				●
	QPHT5007-NM	50.00	25.00	7.94	9.20	9°				●

Milling Insert

● Stock ○ Available upon Order

MFT Anti vibration milling tool bar series



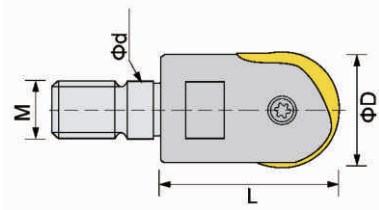
Model	Stock	Dimensions(mm)				
		D	D1	L	M	d
MFT10-10-100-M5	●	10	10	100	M5	5.5
MFT10-10-150-M5	●	10	10	150	M5	5.5
MFT12-12-100-M6	●	12	12	100	M6	6.5
MFT12-12-150-M6	●	12	12	150	M6	6.5
MFT12-12-200-M6	●	12	12	200	M6	6.5
MFT16-16-100-M8	●	16	16	100	M8	8.5
MFT16-16-150-M8	●	16	16	150	M8	8.5
MFT16-16-200-M8	●	16	16	200	M8	8.5
MFT20-20-150-M10	●	20	20	100	M10	10.5
MFT20-20-200-M10	●	20	20	150	M10	10.5
MFT20-20-250-M10	●	20	20	200	M10	10.5
MFT25-25-150-M12	●	25	25	150	M12	12.5
MFT25-25-200-M12	●	25	25	200	M12	12.5
MFT25-25-250-M12	●	25	25	250	M12	12.5
MFT25-25-300-M12	●	25	25	300	M12	12.5
MFT32-32-150-M16	●	32	32	150	M16	17
MFT32-32-200-M16	●	32	32	200	M16	17
MFT32-32-250-M16	●	32	32	250	M16	17
MFT32-32-300-M16	●	32	32	300	M16	17
MFT32-32-400-M16	●	32	32	400	M16	17

● Stock ○ Available upon Order



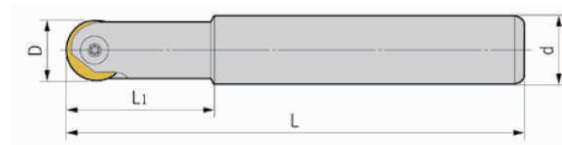
Milling Insert

BF Ball End, finish milling cutters(thread)



Model	Stock	Dimensions(mm)				Insert	Screw	Wrench
		D	d	L	M			
BF-P32D10-M05	●	10	5.5	20	M5	P3201-D10	P32-M4	T-15
BF-P32D12-M06	●	12	6.5	22	M6	P3201-D12	P32-M5	T-320
BF-P32D16-M08	●	16	8.5	28	M8	P3201-D16		
BF-P32D20-M10	●	20	10.5	30	M10	P3201-D20		
BF-P32D25-M12	●	25	12.5	40	M12	P3201-D25	P32-M6	T-30
BF-P32D32-M16	●	32	17.0	43	M16	P3201-D32	P32-M8	

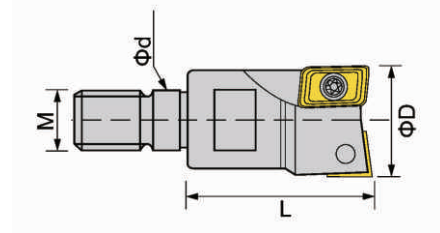
BF Ball head, milling bars




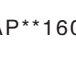

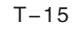


Model	Stock	Dimensions(mm)				Insert	Screw	Wrench
		D	d	L	L1			
BF-C10-P32D10-120	●	10	10	130	30	P3201-D10	P32-M4	T-15
BF-C10-P32D10-150	●	10	10	160	35			
BF-C12-P32D12-130	●	12	12	130	30	P3201-D12	P32-M5	T20
BF-C12-P32D12-150	●	12	12	160	30			
BF-C16-P32D16-130	●	16	16	120	30	P3201-D16		
BF-C16-P32D16-150	●	16	16	160	30			
BF-C16-P32D16-200	●	16	16	200	45	P3201-D20		
BF-C20-P32D20-150	●	20	20	160	30			
BF-C20-P32D20-200	●	20	20	200	35	P3201-D25	P32-M6	T30
BF-C25-P32D25-150	●	25	25	160	35			
BF-C25-P32D25-200	●	25	25	200	40			
BF-C25-P32D25-250	●	25	25	250	60	P3201-D32	P32-M8	
BF-C32-P32D32-200	●	32	32	200	55			
BF-C32-P32D32-250	●	32	32	250	70			
BF-C32-P32D32-300	●	32	32	300	80			

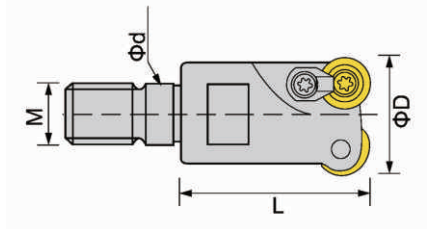
● Stock ○ Available upon Order





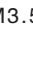
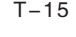
BAP Shoulder/cutting Mills(thread)



Model	Stock	Dimensions(mm)				Insert	Screw	Wrench
		D	d	L	M			
BAP3-16-2T-M08	●	16	8.5	25	M8	 AP**1135	 M2.5*6	 T-8
BAP3-17-2T-M08	●	17	8.5	25	M8			
BAP3-20-2T-M10	●	20	10.5	30	M10			
BAP3-21-3T-M10	●	21	10.5	30	M10			
BAP3-25-3T-M12	●	15	12.5	35	M12			
BAP3-26-2T-M12	●	26	12.5	35	M12			
BAP4-25-2T-M12	●	25	12.5	35	M12	 AP**1604	 M4*10	 T-15
BAP4-32-3T-M16	●	32	17	43	M16			
BAP4-35-3T-M16	●	35	17	43	M16			

RP Corner Radius Mills(thread)



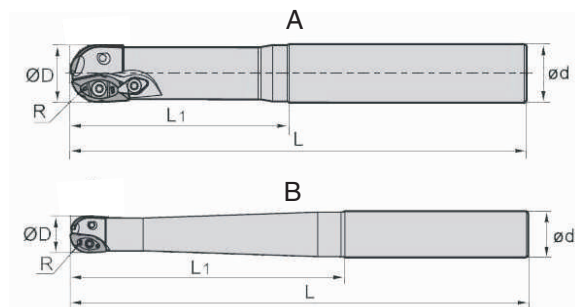
Model	Stock	Dimensions(mm)				Insert	Screw	Wrench
		D	d	L	M			
RD0802-20-2T-M10	●	20	10.5	32	M10	 RD**0802	 M2.5*6	 T-8
RD0802-21-2T-M10	●	21	10.5	32	M10			
RP1003-25-2T-M12	●	25	12.5	35	M12	 RP**1003	 M3.5*8	 T-15
RP1003-26-2T-M12	●	26	12.5	35	M12			
RP1003-30-3T-M12	●	30	12.5	35	M12			
RP1003-32-3T-M16	●	32	17	43	M16			
RP1003-35-3T-M16	●	35	17	43	M16			

● Stock ○ Available upon Order



Milling Insert

BFR Ball End, milling bar



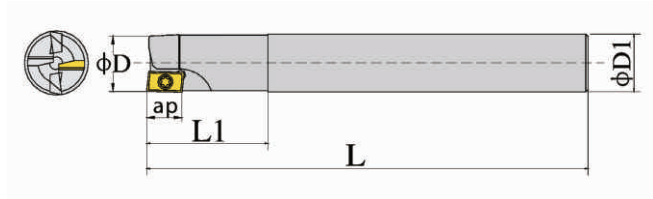
Model	Stock	Dimensions(mm)				Fig	Insert	Screw	Screw	Wrench
		D	d	L	L1					
BFR-C20-QP16R08-150	●	16	20	150	70	B	QPHT1603	---	M2.5*6	T-7
BFR-C20-QP16R08-180	●	16	20	180	80		QPHT20T3	---	M3.5*8	T-10
BFR-C25-QP20R10-180	●	20	25	180	80		QPHT2504	---	M4.0*10	T-15
BFR-C25-QP20R10-200	●	20	25	200	100					
BFR-C25-QP20R10-250	●	20	25	250	150					
BFR-C25-QP25R12.5-180	●	25	25	180	80					
BFR-C25-QP25R12.5-200	●	25	25	200	100					
BFR-C25-QP25R12.5-250	●	25	25	250	110					
BFR-C32-QP30R15-200	●	30	32	200	120	A	QPHT3006	BFR32	M5*13	T-20
BFR-C32-QP30R15-250	●	30	32	250	150		QPHT3206	BFR30	M5*13	T-20
BFR-C32-QP30R15-300	●	30	32	300	200		QPHT4007	BFR40	M6*16	T-25
BFR-C32-QP32R16-200	●	32	32	200	120					
BFR-C32-QP32R16-250	●	32	32	250	150					
BFR-C32-QP32R16-300	●	32	32	300	200					
BFR-C40-QP40R20-200	●	40	40	200	120					
BFR-C40-QP40R20-250	●	40	40	250	150					
BFR-C40-QP40R20-300	●	40	40	300	200					

F

Milling Insert

● Stock ○ Available upon Order

BAP Straight shank milling cutter BAP series



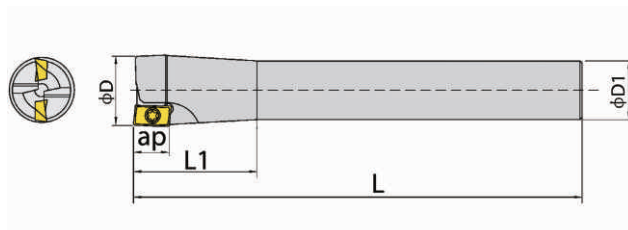
Model	Stock	Dimensions(mm)					Insert	Screw	Wrench				
		D	D1	L	Z	ap							
BAP300R-10-1T-10-120	●	10	10	120	1	9	AP**1135	M2.5*6	T-8				
BAP300R-12-1T-12-120	●	12	12	120									
BAP300R-16-2T-16-120	●	16	16	120									
BAP300R-16-2T-16-150	●	16	16	150									
BAP300R-16-2T-16-160	●	16	16	160									
BAP300R-16-2T-16-200	●	16	16	200									
BAP300R-20-2T-20-120	●	20	20	120									
BAP300R-20-2T-20-150	●	20	20	150									
BAP300R-20-2T-20-160	●	20	20	160									
BAP300R-20-2T-20-200	●	20	20	200									
BAP300R-25-3T-25-120	●	25	25	120	3	9	AP**1135	M2.5*6	T-8				
BAP300R-25-3T-25-150	●	25	25	150									
BAP300R-25-3T-25-160	●	25	25	160									
BAP300R-25-3T-25-200	●	25	25	200									
BAP300R-32-3T-32-160	●	32	32	160									
BAP300R-32-3T-32-200	●	32	32	200									
BAP300R-32-3T-32-250	●	32	32	250									
BAP400R-25-2T-25-120	●	25	25	120	2					14	AP**1604	M4*10	T-15
BAP400R-25-2T-25-150	●	25	25	150									
BAP400R-25-2T-25-160	●	25	25	160									
BAP400R-25-2T-25-200	●	25	25	200									
BAP400R-25-2T-25-250	●	25	25	250									
BAP400R-32-2T-32-160	●	32	32	160									
BAP400R-32-2T-32-200	●	32	32	200									
BAP400R-32-2T-32-250	●	32	32	250									

● Stock ○ Available upon Order



Milling Insert

BAP Variable Head, mills BAP series



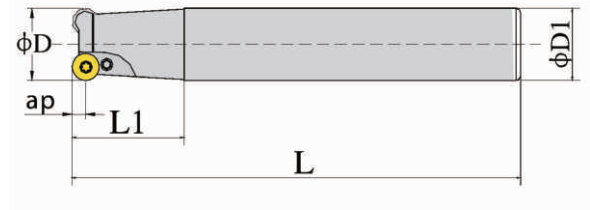
Model	Stock	Dimensions(mm)					Insert	Screw	Wrench				
		D	D1	L	Z	ap							
BAP300R-17-2T-16-120	●	17	16	120	2								
BAP300R-17-2T-16-150	●	17	16	150									
BAP300R-17-2T-16-160	●	17	16	160									
BAP300R-17-2T-16-200	●	17	16	200									
BAP300R-21-2T-20-120	●	21	20	120									
BAP300R-21-2T-20-150	●	21	20	150									
BAP300R-21-2T-20-160	●	21	20	160									
BAP300R-21-2T-20-200	●	21	20	200									
BAP300R-26-3T-25-120	●	26	25	120	9	AP**1135	M2.5*6	T-8					
BAP300R-26-3T-25-150	●	26	25	150									
BAP300R-26-3T-25-160	●	26	25	160									
BAP300R-26-3T-25-200	●	26	25	200									
BAP300R-26-3T-25-250	●	26	25	250									
BAP300R-32-3T-25-120	●	32	25	120									
BAP300R-32-3T-25-150	●	32	25	150									
BAP300R-32-3T-25-160	●	32	25	160									
BAP300R-32-3T-25-200	●	32	25	200	3								
BAP300R-32-3T-25-250	●	32	25	250									
BAP300R-35-3T-32-160	●	35	32	160									
BAP300R-35-3T-32-200	●	35	32	200									
BAP300R-35-3T-32-250	●	35	32	250									
BAP400R-26-2T-25-120	●	26	25	120	2								
BAP400R-26-2T-25-150	●	26	25	150									
BAP400R-26-2T-25-160	●	26	25	160									
BAP400R-26-2T-25-200	●	26	25	200									
BAP400R-26-2T-25-250	●	26	25	250									
BAP400R-32-2T-25-160	●	32	25	160									
BAP400R-32-2T-25-200	●	32	25	200									
BAP400R-32-2T-25-250	●	32	25	250									
BAP400R-35-3T-32-160	●	35	32	160					3	14	AP**1604	M4*10	T-15
BAP400R-35-3T-32-200	●	35	32	200									
BAP400R-35-3T-32-250	●	35	32	250									

● Stock ○ Available upon Order

F

Milling Insert

BRP Straight shank milling cutter BRP series



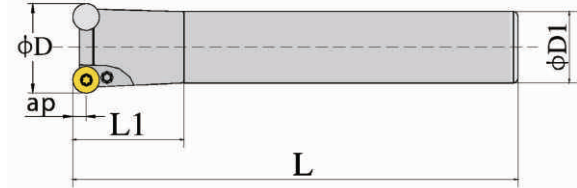
Model	Stock	Dimensions(mm)					Insert	Screw	Wrench	Clamp
		D	D1	L	Z	ap				
BRP4R-16-2T-16-120	●	16	16	120	2	4	RP**08T2	M3.0*6	T-10	R4YD
BRP4R-16-2T-16-150	●	16	16	150						
BRP4R-16-2T-16-160	●	16	16	160						
BRP4R-16-2T-16-200	●	16	16	200						
BRP4R-20-2T-20-120	●	20	20	120						
BRP4R-20-2T-20-150	●	20	20	150						
BRP4R-20-2T-20-160	●	20	20	160						
BRP4R-20-2T-20-200	●	20	20	200						
BRP4R-25-3T-25-120	●	25	25	120	3	5	RP**10T3	M3.5*8	T-15	R5YD
BRP4R-25-3T-25-150	●	25	25	150						
BRP4R-25-3T-25-160	●	25	25	160						
BRP4R-25-3T-25-200	●	25	25	200						
BRP5R-16-1T-16-120	●	16	16	120	1	5	RP**10T3	M3.5*8	T-15	R5YD
BRP5R-16-1T-16-160	●	16	16	160						
BRP5R-16-1T-16-200	●	16	16	200						
BRP5R-20-1T-20-120	●	20	20	120						
BRP5R-20-1T-20-160	●	20	20	160						
BRP5R-20-1T-20-200	●	20	20	200						
BRP5R-25-2T-25-120	●	25	25	120	2	5	RP**10T3	M3.5*8	T-15	R5YD
BRP5R-25-2T-25-160	●	25	25	160						
BRP5R-25-2T-25-200	●	25	25	200	3	5	RP**10T3	M3.5*8	T-15	R5YD
BRP5R-25-2T-25-250	●	25	25	250						
BRP5R-32-3T-32-160	●	32	32	160						
BRP5R-32-3T-32-200	●	32	32	200	3	5	RP**10T3	M3.5*8	T-15	R5YD
BRP5R-32-3T-32-250	●	32	32	250						
BRP6R-25-2T-25-160	●	25	25	160	2	6	RP**1204	M4.0*10	T-15	R6YD
BRP6R-25-2T-25-200	●	25	25	200						
BRP6R-25-2T-25-250	●	25	25	250						
BRP6R-32-3T-32-160	●	32	32	160	3	6	RP**1204	M4.0*10	T-15	R6YD
BRP6R-32-3T-32-200	●	32	32	200						
BRP6R-32-3T-32-250	●	32	32	250						

●Stock ○Available upon Order



Milling Insert

BRP Mills, variable head BRP series



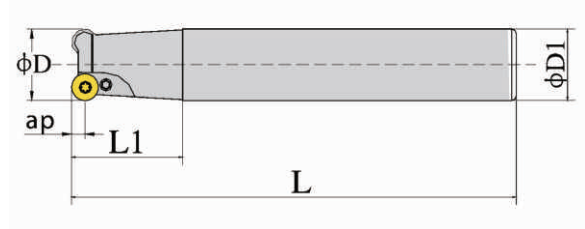
Model	Stock	Dimensions(mm)					Insert	Screw	Wrench	Clamp
		D	D1	L	Z	ap				
BRP4R-17-2T-16-120	●	17	16	120	2	4	RP**08T2	M3.0*6	T-10	R4YD
BRP4R-17-2T-16-160	●	17	16	160						
BRP4R-17-2T-16-200	●	17	16	200						
BRP4R-21-2T-20-120	●	21	20	120						
BRP4R-21-2T-20-160	●	21	20	160						
BRP4R-21-2T-20-200	●	21	20	200						
BRP4R-26-3T-25-120	●	26	25	120	3	5	RP**10T3	M3.5*8	T-15	R5YD
BRP4R-26-3T-25-160	●	26	25	160						
BRP4R-26-3T-25-200	●	26	25	200						
BRP5R-17-1T-16-120	●	17	16	120	1	6	RP**1204	M4.0*10	T-15	R6YD
BRP5R-17-1T-16-160	●	17	16	160						
BRP5R-17-1T-16-200	●	17	16	200						
BRP5R-21-1T-20-120	●	21	20	120						
BRP5R-21-1T-20-160	●	21	20	160						
BRP5R-21-1T-20-200	●	21	20	200	2	5	RP**10T3	M3.5*8	T-15	R5YD
BRP5R-26-2T-25-120	●	26	25	120						
BRP5R-26-2T-25-160	●	26	25	160						
BRP5R-26-2T-25-200	●	26	25	200	3	6	RP**1204	M4.0*10	T-15	R6YD
BRP5R-26-2T-25-250	●	26	25	250						
BRP5R-32-3T-25-160	●	32	25	160						
BRP5R-32-3T-25-200	●	32	25	200	3	6	RP**1204	M4.0*10	T-15	R6YD
BRP5R-32-3T-25-250	●	32	25	250						
BRP5R-35-3T-32-160	●	35	32	160						
BRP5R-35-3T-32-200	●	35	32	200	2	6	RP**1204	M4.0*10	T-15	R6YD
BRP5R-35-3T-32-250	●	35	32	250						
BRP6R-26-2T-25-160	●	26	25	160						
BRP6R-26-2T-25-200	●	26	25	200	2	6	RP**1204	M4.0*10	T-15	R6YD
BRP6R-26-2T-25-250	●	26	25	250						
BRP6R-32-3T-25-160	●	32	25	160						
BRP6R-32-3T-25-200	●	32	25	200	3	6	RP**1204	M4.0*10	T-15	R6YD
BRP6R-32-3T-25-250	●	32	25	250						
BRP6R-35-3T-32-160	●	35	32	160						
BRP6R-35-3T-32-200	●	35	32	200	3	6	RP**1204	M4.0*10	T-15	R6YD
BRP6R-35-3T-32-250	●	35	32	250						
BRP6R-35-3T-32-250	●	35	32	250						

●Stock ○Available upon Order

F

Milling Insert

BRD Straight shank milling cutter BRD series



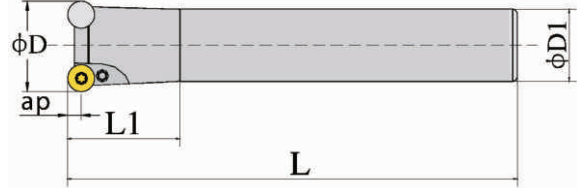
Model	Stock	Dimensions(mm)					Insert	Screw	Wrench	Clamp
		D	D1	L	Z	ap				
BRD4R-16-2T-16-120	●	16	16	120	2	4	RD**0802	M3.0*6	T-10	R4YD
BRD4R-16-2T-16-150	●	16	16	150						
BRD4R-16-2T-16-160	●	16	16	160						
BRD4R-16-2T-16-200	●	16	16	200						
BRD4R-20-2T-20-120	●	20	20	120						
BRD4R-20-2T-20-150	●	20	20	150						
BRD4R-20-2T-20-160	●	20	20	160						
BRD4R-20-2T-20-200	●	20	20	200						
BRD4R-25-3T-25-120	●	25	25	120	3					
BRD4R-25-3T-25-150	●	25	25	150						
BRD4R-25-3T-25-160	●	25	25	160						
BRD4R-25-3T-25-200	●	25	25	200						
BRD5R-16-1T-16-120	●	16	16	120	1					
BRD5R-16-1T-16-160	●	16	16	160						
BRD5R-16-1T-16-200	●	16	16	200						
BRD5R-20-1T-20-120	●	20	20	120						
BRD5R-20-1T-20-160	●	20	20	160						
BRD5R-20-1T-20-200	●	20	20	200						
BRD5R-25-2T-25-120	●	25	25	120	2	5	RD**10T3	M3.5*8	T-15	R5YD
BRD5R-25-2T-25-160	●	25	25	160						
BRD5R-25-2T-25-200	●	25	25	200						
BRD5R-25-2T-25-250	●	25	25	250						
BRD5R-32-3T-32-160	●	32	32	160	3					
BRD5R-32-3T-32-200	●	32	32	200						
BRD5R-32-3T-32-250	●	32	32	250						
BRD6R-25-2T-25-160	●	25	25	160	2					
BRD6R-25-2T-25-200	●	25	25	200						
BRD6R-25-2T-25-250	●	25	25	250	6	RD**1204	M4.0*10	T-15		R6YD
BRD6R-32-3T-32-160	●	32	32	160						
BRD6R-32-3T-32-200	●	32	32	200						
BRD6R-32-3T-32-250	●	32	32	250	3					

●Stock ○Available upon Order



Milling Insert

BRD Mills, variable head BRD series



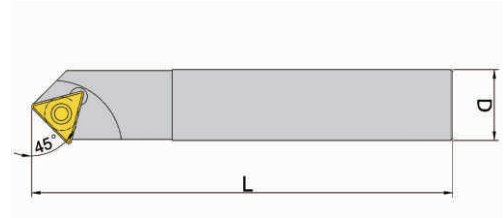
Model	Stock	Dimensions(mm)					Insert	Screw	Wrench	Clamp
		D	D1	L	Z	ap				
BRD4R-17-2T-16-120	●	17	16	120	2	4	RD**0802	M3.0*6	T-10	R4YD
BRD4R-17-2T-16-160	●	17	16	160						
BRD4R-17-2T-16-200	●	17	16	200						
BRD4R-21-2T-20-120	●	21	20	120						
BRD4R-21-2T-20-160	●	21	20	160						
BRD4R-21-2T-20-200	●	21	20	200						
BRD4R-26-3T-25-120	●	26	25	120	3					
BRD4R-26-3T-25-160	●	26	25	160						
BRD4R-26-3T-25-200	●	26	25	200						
BRD5R-17-1T-16-120	●	17	16	120	1					
BRD5R-17-1T-16-160	●	17	16	160						
BRD5R-17-1T-16-200	●	17	16	200						
BRD5R-21-1T-20-120	●	21	20	120						
BRD5R-21-1T-20-160	●	21	20	160						
BRD5R-21-1T-20-200	●	21	20	200						
BRD5R-26-2T-25-120	●	26	25	120	2	5	RD**10T3	M3.5*8	T-15	R5YD
BRD5R-26-2T-25-160	●	26	25	160						
BRD5R-26-2T-25-200	●	26	25	200						
BRD5R-26-2T-25-250	●	26	25	250	3					
BRD5R-32-3T-25-160	●	32	25	160						
BRD5R-32-3T-25-200	●	32	25	200						
BRD5R-32-3T-25-250	●	32	25	250						
BRD5R-35-3T-32-160	●	35	32	160						
BRD5R-35-3T-32-200	●	35	32	200						
BRD5R-35-3T-32-250	●	35	32	250	2	6	RD**1204	M4.0*10	T-15	R6YD
BRD6R-26-2T-25-160	●	26	25	160						
BRD6R-26-2T-25-200	●	26	25	200						
BRD6R-26-2T-25-250	●	26	25	250						
BRD6R-32-3T-25-160	●	32	25	160						
BRD6R-32-3T-25-200	●	32	25	200						
BRD6R-32-3T-25-250	●	32	25	250	3					
BRD6R-35-3T-32-160	●	35	32	160						
BRD6R-35-3T-32-200	●	35	32	200						
BRD6R-35-3T-32-250	●	35	32	250						

● Stock ○ Available upon Order

F

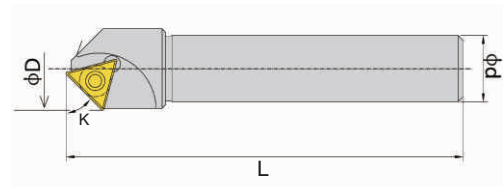
Milling Insert

DX45 Pilot drill series



Model	Stock	Dimensions(mm)			Insert	Screw	Wrench
		D	L				
DX45-16-120	●	20	120		TCGT16T302	M4.0*10	T-15

B30TC Chamfer cutter BTC series



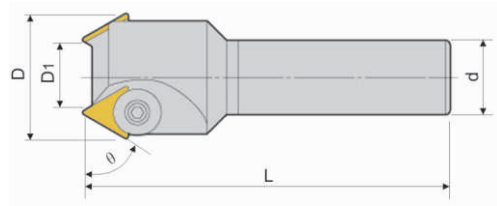
Model	Stock	Dimensions(mm)					Insert	Screw	Wrench
		D	d	L	Z	K			
B30TC11 20 1T20-120	●	20	20	120	1	30°	TC**1102	M2.5*6	T-8
B30TC11 25 2T20-120	●	25	20	120	2	30°			
B45TC11 20 1T20-120	●	20	20	120	1	45°			
B45TC11 25 2T20-120	●	25	20	120	2	45°			
B60TC11 20 1T20-120	●	20	20	120	1	60°			
B60TC11 25 2T20-120	●	25	20	120	2	60°			
B30TC16 20 1T20-120	●	20	20	120	1	30°	TC**16T3	M2.5*7	T-9
B30TC16 32 2T25-120	●	32	25	120	2	30°			
B45TC16 20 1T20-120	●	20	20	120	1	45°			
B45TC16 32 2T25-120	●	32	25	120	2	45°			
B60TC16 20 1T20-120	●	20	20	120	1	60°			
B60TC16 32 2T25-120	●	32	25	120	2	60°			

● Stock ○ Available upon Order



Milling Insert

TP Chamfer cutter bar

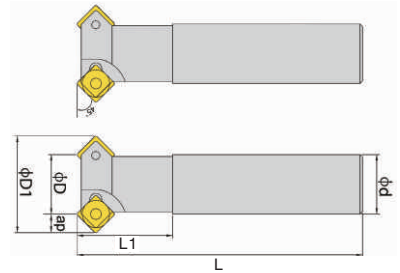


Model	Stock	Dimensions(mm)						Insert	Screw	Wrench
		D	D1	d	L	Z	K			
TP60-C25-40-120-2T	●	37.7	15.8	25	120	2	60°	TP**1603	M060H080	L4.0
TP45-C20-20-120-1T	●	20.4	4	20	120	1	45°			
TP45-C20-32-120-2T	●	30.2	12	20	120	2	45°			
TP45-C25-50-160-3T	●	49	24	25	160	3	45°	TP**2204	M080H120	L5.0
TP30-C25-40-120-2T	●	39	26	25	120	2	30°	TP**1603	M060H080	L4.0
TP30-C32-55-160-3T	●	54.5	36	32	160	3	30°	TP**2204	M080H120	L5.0

F

Milling Insert

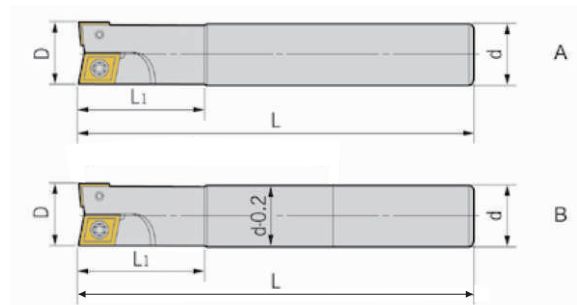
B45SC Chamfer cutter BSC series(Multi-purpose)



Model	Stock	Dimensions(mm)						Insert	Screw	Wrench
		D	D1	d	L	Z	K			
B45SC-09-1T20-120	●	9	22.6	20	120	1	45°	SC**09T3	M3.5*8	T-15
B45SC-19-2T20-120	●	19	32.1	20	120	2	45°			
B45SC-25-2T25-120	●	25	41.3	25	120	2	45°			

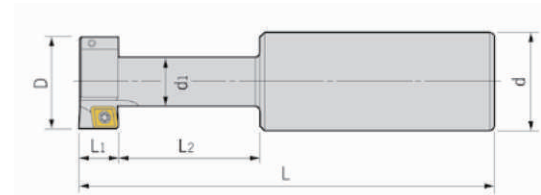
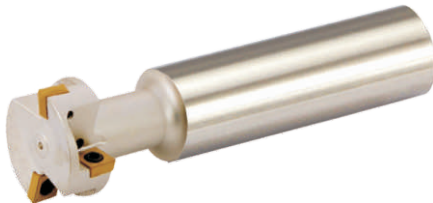
● Stock ○ Available upon Order

AJU Center drilling mills



Model	Stock	Dimensions(mm)					Z	Insert	Screw	Wrench
		D	d	L	L1	Z				
AJU-C16-16-120-2T	●	16	16	120	35	2	CCMT060204	M2.5*6	T-8	
AJU-C16-16-150-2T	●	16	16	150	35		CPMT080204Z			
AJU-C16-16-200-2T	●	16	16	200	40					
AJU-C20-20-160-2T	●	20	20	160	50		CCMT060204	M2.5*6	T-8	
AJU-C20-20-200-2T	●	20	20	200	60		CPMT090204Z	M3.5*8	T-15	
AJU-C25-25-160-2T	●	25	25	160	60		CCMT090308	M4.0*8	T-15	
AJU-C25-25-200-2T	●	25	25	200	70		CPMT120308Z			
AJU-C25-25-250-2T	●	25	25	250	80					
AJU-C32-32-200-2T	●	32	32	200	60		CPMT120408	M5.0*11	T-20	
AJU-C32-32-250-2T	●	32	32	250	70		CPMT160408Z			

ATS T-Slot Milling cutter



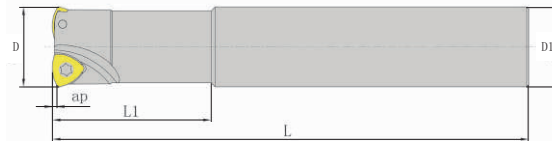
Model	Stock	Dimensions(mm)						Insert	Screw	Wrench
		D	d	d1	L	L1	L2			
ATS C25-25-11-110-2T	●	25	25	12.5	110	11	21	CCMT060204	M2.5*6	T-8
ATS C32-32-14-120-2T	●	32	32	16	120	14	30	CPMT080204		
ATS C32-40-18-130-4T	●	40	32	20	130	18	32	CCMT09T308	M4.0*8	T-15
ATS C32-50-22-140-4T	●	50	32	26	140	22	39	CCMT120408	M5.0*11	T-20

● Stock ○ Available upon Order



Milling Insert

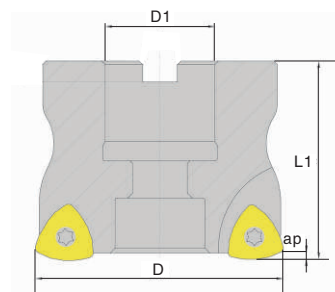
BUD



Model	Stock	Dimensions(mm)						Insert	Screw	Wrench
		D	D1	L	L1	ap	Z			
BUD08-20-2T20-120	○	20	20	120	40	1.0	2	UD**0803	M3*7	T-8
BUD08-20-2T20-160	○	20	20	160	50	1.0				
BUD08-20-2T20-200	○	20	20	200	60	1.0				
BUD08-25-2T25-120	○	25	25	120	40	1.0				
BUD08-25-2T25-160	○	25	25	160	50	1.0				
BUD08-25-2T25-200	○	25	25	200	60	1.0				
BUD12-25-2T25-160	○	25	25	160	50	1.5	3	UD**12T3	M4*10	T-15
BUD12-25-2T25-200	○	25	25	200	60	1.5				
BUD12-32-3T32-160	○	32	32	160	50	1.5				
BUD12-32-3T32-200	○	32	32	200	60	1.5				

F

BUD

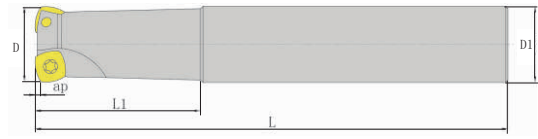


Model	Stock	Dimensions(mm)						Insert	Screw	Wrench
		D	D1	L1	ap	Z				
BUD12-050-4T-22	○	50	22	50	1.5	4	UD**12T3	M4*10	T-15	
BUD12-063-4T-22	○	63	22	50		4				
BUD12-080-5T-27	○	80	27	50		5				
BUD12-100-6T-32	○	100	32	50		6				

Milling Insert

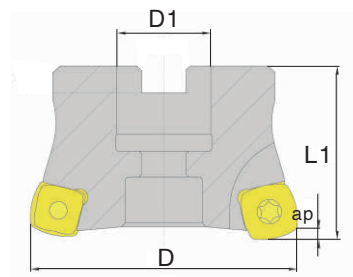
● Stock ○ Available upon Order

BSD



Model	Stock	Dimensions(mm)						Insert	Screw	Wrench
		D	D1	L	L1	ap	Z			
BSD12-32-2T32-160	○	32	32	160	50	1.0	2	SD**12T3	M4*10	T-15
BSD12-32-2T32-200	○	32	32	200	60	1.0				
BSD12-35-3T32-200	○	35	32	160	60	1.0	3			
BSD12-40-3T32-200	○	40	32	200	60	1.0				

BSD



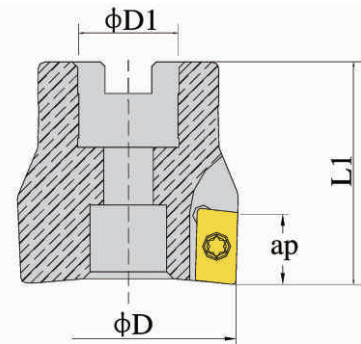
Model	Stock	Dimensions(mm)					Insert	Screw	Wrench
		D	D1	L1	ap	Z			
BSD12-050-4T-22	○	50	22	50	2	4	SD**1205	M4*10	T-15
BSD12-063-4T-22	○	63	22	50					
BSD12-080-5T-27	○	80	27	50					
BSD12-100-6T-32	○	100	32	50					
BSD15-063-4T-22	○	63	22	50	3	4	SD**1505	M5*11	T-20
BSD15-080-5T-27	○	80	27	50					
BSD15-100-6T-32	○	100	32	50					




●Stock ○Available upon Order



Milling Insert

BAP Mills series



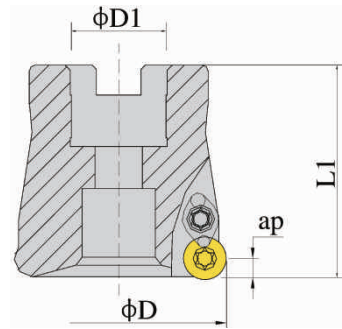
Model	Stock	Dimensions(mm)					Insert 	Screw 	Wrench 	
		D	D1	L1	ap	Z				
BAP400R 050 4T 22	●	50	22	50	16	4	AP**1604	M4*10	T-15	
BAP400R 063 4T 22	●	63	22	50						4
BAP400R 063 5T 22	●	63	22	50						5
BAP400R 080 6T 27	●	80	27	50						6
BAP400R 100 6T 32	●	100	32	50						6
BAP400R 125 6T 40	●	125	40	63						6
BAP400R 050 4T 25.4	○	50	25.4	50						4
BAP400R 063 5T 25.4	○	63	25.4	50						5
BAP400R 080 6T 25.4	○	80	25.4	50						6
BAP400R 100 6T 31.75	○	100	31.75	50						6

F

Milling Insert

● Stock ○ Available upon Order

BRP Mills series



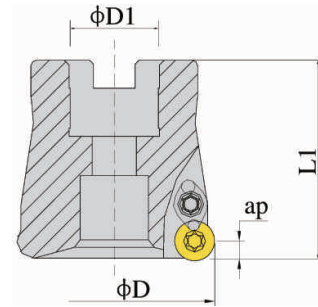
Model	Stock	Dimensions(mm)					Insert	Screw	Wrench	Clamp
		D	D1	L1	ap	Z				
BRP 5R 050 4T 22	●	50	22	50	5	4	RP**1003	M3.5*8	T-15	R5YD
BRP 5R 063 4T 22	●	63	22	50		4				
BRP 5R 063 5T 22	●	63	22	50		5				
BRP 5R 080 6T 27	●	80	27	50		6				
BRP 5R 100 6T 32	●	100	32	50		6				
BRP 5R 050 4T 25.4	○	50	25.4	50		4				
BRP 5R 063 4T 25.4	○	63	25.4	50		4				
BRP 5R 080 6T 25.4	○	80	25.4	50		6				
BRP 5R 100 6T 31.75	○	100	31.75	50		6				
BRP 6R 050 4T 22	●	50	22	50		6				
BRP 6R 063 4T 22	●	63	22	50	4					
BRP 6R 080 6T 27	●	80	27	50	6					
BRP 6R 100 6T 32	●	100	32	50	6					
BRP 6R 050 4T 25.4	○	50	25.4	50	4					
BRP 6R 063 4T 25.4	○	63	25.4	50	4					
BRP 6R 080 6T 25.4	○	80	25.4	50	6					
BRP 6R 100 6T 31.75	○	100	31.75	50	6					

● Stock ○ Available upon Order



Milling Insert

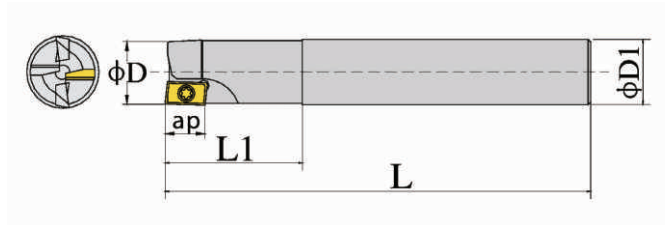
BRD Mills series



Model	Stock	Dimensions(mm)					Insert	Screw	Wrench	Clamp
		D	D1	L1	ap	Z				
BRD 5R 050 4T 22	●	50	22	50	5	4	RD**10T3	M3.5*8	T-15	R5YD
BRD 5R 063 4T 22	●	63	22	50		4				
BRD 5R 063 5T 22	●	63	22	50		5				
BRD 5R 080 6T 27	●	80	27	50		6				
BRD 5R 100 6T 32	●	100	32	50		6				
BRD 5R 125 7T 40	●	125	40	63		7				
BRD 5R 050 4T 25.4	○	50	25.4	50		4				
BRD 5R 063 4T 25.4	○	63	25.4	50		4				
BRD 5R 080 6T 25.4	○	80	25.4	50		6				
BRD 5R 100 6T 31.75	○	100	31.75	50		6				
BRD 5R 125 7T 38.1	○	125	38.1	63	7					
BRD 6R 050 4T 22	●	50	22	50	6	4	RD**1204	M4.0*10	T-15	R6YD
BRD 6R 063 4T 22	●	63	22	50		4				
BRD 6R 063 5T 22	●	63	22	50		5				
BRD 6R 080 6T 27	●	80	27	50		6				
BRD 6R 100 6T 32	●	100	32	50		6				
BRD 6R 125 7T 40	●	125	40	63		7				
BRD 6R 050 4T 25.4	○	50	25.4	50		4				
BRD 6R 063 4T 25.4	○	63	25.4	50		4				
BRD 6R 080 6T 25.4	○	80	25.4	50		6				
BRD 6R 100 6T 31.75	○	100	31.75	50		6				
BRD 6R 125 7T 38.1	○	125	38.1	63	7					
BRD 8R 063 4T 22	●	63	22	50	8	4	RD**1604	M5.0*12	T-20	R6YD
BRD 8R 080 5T 27	●	80	27	50		5				
BRD 8R 100 6T 32	●	100	32	50		6				
BRD 8R 125 7T 40	●	125	40	63		7				
BRD 8R 160 8T 40	●	160	40	63		8				
BRD 10R 100 6T 40	○	100	31.75	50	10	6	RD**2006			R10YD
BRD 10R 125 7T 40	○	125	38.1	63		7				
BRD 10R 160 8T 60	○	160	50.8	63		8				

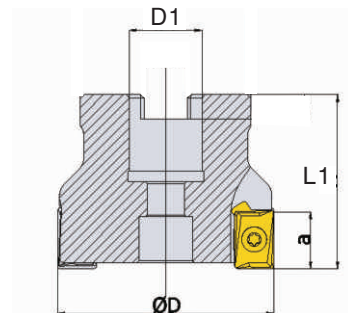
● Stock ○ Available upon Order

BAN



Model	Stock	Dimensions(mm)						Insert	Screw	Wrench
		D	D1	L	L1	ap	Z			
BAN08-1616T2-120	●	16	16	120	26	8	2	AN**0804	AN09-M2.5	T-8
BAN08-1616T2-160	○	16	16	160						
BAN08-2020T3-120	●	20	20	120						
BAN08-2020T3-160	○	20	20	160						
BAN08-2525T4-120	●	25	25	120						
BAN08-2525T4-160	○	25	25	160						
BAN08-3232T5-160	○	32	32	160						
BAN08-3232T5-200	○	32	32	200						
BAN13-2525T2-120	●	25	25	120	13	2	AN**1305	AN13-M4.0	T-15	
BAN13-2525T2-160	○	25	25	160						
BAN13-3232T3-160	●	32	32	160						
BAN13-3232T3-200	○	32	32	200						
BAN13-4040T4-160	○	40	40	160						
BAN13-4040T4-200	○	40	40	200						

BAN



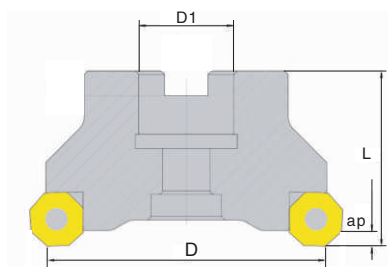
Model	Stock	Dimensions(mm)					Insert	Screw	Wrench
		D	D1	L1	ap	Z			
BAN16D050T4-22	●	50	22	50	16	4	AN**1606	AN16-M5.0	T-20
BAN16D063T5-22	●	63	22	50					
BAN16D080T6-27	●	80	27	50					
BAN16D100T7-32	●	100	32	50					
BAN16D125T8-40	●	125	40	63					
BAN16D160T10-40	●	160	40	63					
BAN16D200T12-60	○	200	60	63					
BAN16D250T14-60	○	250	60	63					

● Stock ○ Available upon Order



Milling Insert

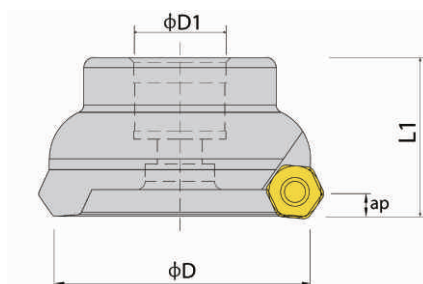
SONFM



Model	Stock	Dimensions(mm)					Insert	Screw	Wrench
		D	D1	L	ap	Z			
SONFM45D050T04-22	●	50	22	50	3-6	4	 SN**1205 ON**1205	 SNON-M4.0	 T-15
SONFM45D063T05-22	●	63	22	50		5			
SONFM45D080T06-27	●	80	27	50		6			
SONFM45D100T07-32	●	100	32	50		7			
SONFM45D125T08-40	●	125	40	63		8			
SONFM45D160T10-40	●	160	40	63		10			
SONFM45D200T12-60	●	200	60	63		12			
SONFM45D250T14-60	●	250	60	63		14			
SONFM45D315T18-60	●	315	60	63		18			

F

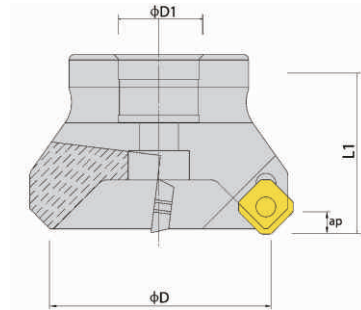
TFM55° Facing mills series



Model	Stock	Dimensions(mm)					Insert	Screw	Wrench
		D	D1	L1	ap	Z			
TFM55AHNS 050 4T 22	●	50	22	50	4	 HN**0504	 M4.5*12	 T-20	
TFM55AHNS 063 5T 23	●	63	22	50					5
TFM55AHNS 080 6T 24	●	80	27	50					6
TFM55AHNS 100 7T 25	●	100	32	50					7
TFM55AHNS 125 8T 26	●	125	40	63					8
TFM55AHNS 160 9T 27	●	160	40	63					9

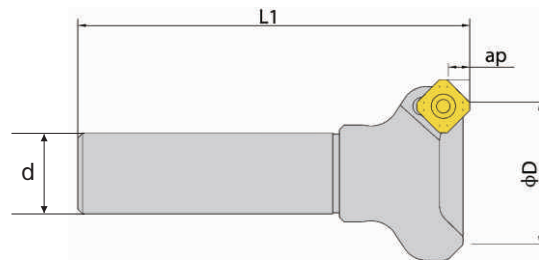
● Stock ○ Available upon Order

SE45° Facing mills series



Model	Stock	Dimensions(mm)					Insert	Screw	Wrench
		D	D1	L1	ap	Z			
SE13 050 4T 22	●	50	22	50	5	4	SE**13T3	M3.5*8	T-15
SE13 063 5T 22	●	63	22	50		5			
SE13 080 5T 27	●	80	27	50		5			
SE13 100 6T 32	●	100	32	50		6			
SE13 125 7T 40	●	125	40	63		7			
SE13 160 8T 40	●	160	40	63		8			
SE13 200 10T 60	●	200	60	63	10				

BSE45° Straight shank Facing mills series



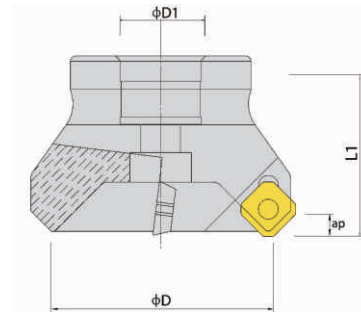
Model	Stock	Dimensions(mm)					Insert	Screw	Wrench
		D	d	L1	ap	Z			
BSE13 050 4T 120	●	50	32	120	6	4	SE**13T3	M3.5*8	T-15
BSE13 063 5T 120	●	63				5			
BSE13 080 5T 120	●	80				5			
BSE13 100 6T 120	●	100				6			

● Stock ○ Available upon Order



Milling Insert

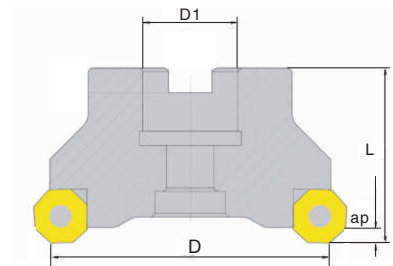
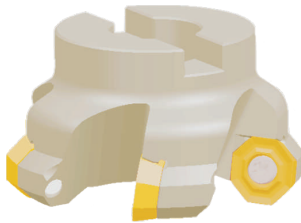
SE45° Facing mills series



Model	Stock	Dimensions(mm)					Insert	Screw	Wrench
		D	D1	L1	ap	Z			
SE12 050 4T 22	●	50	22	50	5	4	SE**1204	M5.0*12	T-20
SE12 063 5T 22	●	63	22	50		5			
SE12 080 5T 27	●	80	27	50		5			
SE12 100 6T 32	●	100	32	50		6			
SE12 125 7T 40	●	125	40	63		7			
SE12 160 8T 40	●	160	40	63		8			
SE12 200 10T 60	●	200	60	63		10			

F

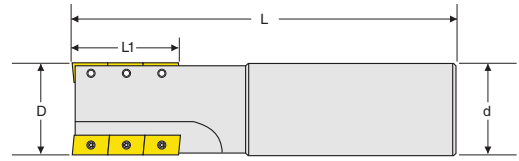
FM



Model	Stock	Dimensions(mm)					Insert	Screw	Wrench
		D	D1	L	ap	Z			
FM45-D050T04-22-OD06	●	50	22	50	4	4	OD**0605	M5*12	T-20
FM45-D063T05-22-OD06	●	63	22	50		5			
FM45-D080T06-27-OD06	●	80	27	50		6			
FM45-D100T07-32-OD06	●	100	32	50		7			
FM45-D125T08-40-OD06	●	125	40	63		8			
FM45-D160T10-40-OD06	●	160	40	63		10			
FM45-D200T12-60-OD06	●	200	60	63		12			

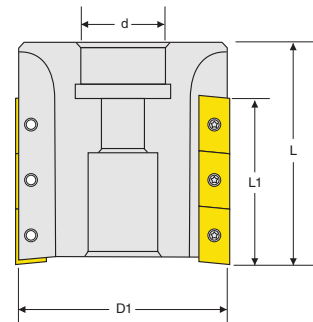
● Stock ○ Available upon Order

BM90° Corn mills



Model	Stock	Dimensions(mm)					Insert	Screw	Wrench
		D	d	L	L1	Z			
BAP11-2020-28M2T-120	●	20	20	120	28	2	APMT1135	M2.5*6	T-18
BAP11-2525-38M2T-130	●	25	25	130	38	2			
BAP11-2525-48M2T-130	●	25	25	130	48	2			
BAP11-3232-48M3T-140	●	32	32	140	48	3			
BAP16-3232-70M2T-150	●	32	32	150	70	2	APMT1604	M4*10	T-15
BAP16-4032-70M2T-150	●	40	32	150	70	2			
BAP16-4032-70M3T-150	●	40	32	150	70	3			
BAP16-5032-70M3T-150	●	50	32	150	70	3			

BM90° Corn mills



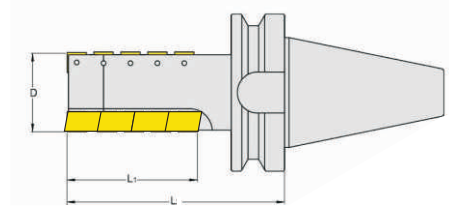
Model	Stock	Dimensions(mm)					Insert	Screw	Wrench
		D	d	L	L1	Z			
BAP16-D050-22-42M3T	●	50	22	120	42	3	APMT1604	M4*10	T-15
BAP16-D063-27-42M4T	●	63	27		42	4			
BAP16-D063-27-60M4T	●	63	27		60	4			
BAP16-D080-32-72M5T	●	80	32		72	5			

● Stock ○ Available upon Order



Milling Insert

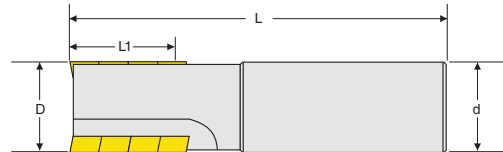
BT Change rough cutting end mills



Model	Stock	Dimensions(mm)				Insert	Screw	Wrench
		D	L	L1	Z			
BT50-D50-70M4T-AP16	●	50		70	4	 APMT1604	 M4*10	 T-15
BT50-D63-70M4T-AP16	●	63		70	4			
BT50-D63-85M4T-AP16	●	63		85	4			
BT50-D63-100M4T-AP16	●	63		100	5			
BT50-D80-99M5T-AP16	●	80		99	5			
BT50-D80-120M5T-AP16	●	80		120	5			
BT50-D100-118M6T-AP16	●	100		118	6			
BT50-D100-160M6T-AP16	●	100		160	6			
BT50-D100-280M6T-AP16	●	100		280	6			

F

HMC

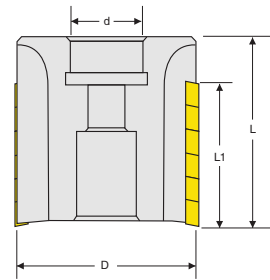


Model	Stock	Dimensions(mm)					Insert	Screw	Wrench
		D	d	L	L1	Z			
HMC90-025.029.2T25-CN07	●	25	25	106	29	2	 CN**07	 M3*12	 T-9
HMC90-032.035.2T32-CN07	●	32	32	117	35	2			
HMC90-040.040.3T32-CN07	●	40	32	125	40	3			

Milling Insert

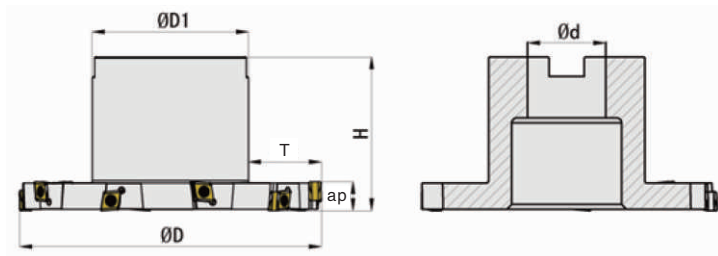
● Stock ○ Available upon Order

HMC



Model	Stock	Dimensions(mm)					Insert	Screw	Wrench
		D	d	L	L1	Z			
HMC90-050.052.4T22-CN07	●	50	22	70	52	4	CN**07	M3*12	T-9
HMC90-063.052.4T22-CN07	●	63	22		52	5			
HMC90-080.052.5T27-CN07	●	80	27		52	5			

TMR Side and face milling



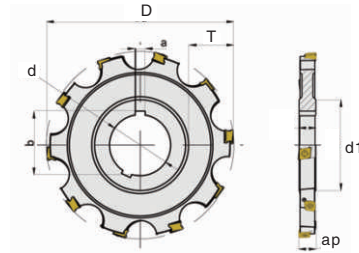
Model	Stock	Dimensions(mm)							Insert	Screw	Wrench
		D	d	L	ap	Z	T				
TMR-063.H10.05T22-CN07	●	63	22	50	10	5	10	CN**07	M3*12	T-9	
TMR-080.H10.06T27-CN07	●	80	27	50	10	6	14				
TMR-100.H10.08T32-CN07	●	100	32	50	10	8	19				
TMR-125.H10.10T32-CN07	●	125	32	63	10	10	29				
TMR-160.H10.12T40-CN07	●	160	40	63	10	12	43				
TMR-063.H12.05T22-CN07	●	63	22	50	12	5	10				
TMR-080.H12.06T27-CN07	●	80	27	50	12	6	14				
TMR-100.H12.08T32-CN07	●	100	32	50	12	8	19				
TMR-125.H12.10T32-CN07	●	125	32	63	12	10	29				
TMR-160.H12.12T40-CN07	●	160	40	63	12	12	43				




● Stock ○ Available upon Order



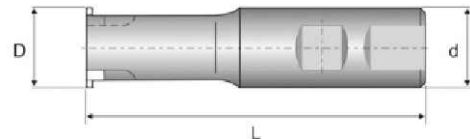
Milling Insert




SMR Side and face milling



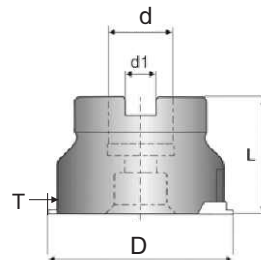
Model	Stock	Dimensions(mm)						Insert	Screw	Wrench
		D	d	d1	ap	Z	T			
SMR-063.H10.05T22-CN07	●	63	22	50	10	5	10	 CN**07	 M3*12	 T-9
SMR-080.H10.06T27-CN07	●	80	27	50	10	6	14			
SMR-100.H10.08T32-CN07	●	100	32	50	10	8	19			
SMR-125.H10.10T32-CN07	●	125	32	63	10	10	29			
SMR-160.H10.12T40-CN07	●	160	40	63	10	12	43			
SMR-063.H12.05T22-CN07	●	63	22	50	12	5	10			
SMR-080.H12.06T27-CN07	●	80	27	50	12	6	14			
SMR-100.H12.08T32-CN07	●	100	32	50	12	8	19			
SMR-125.H12.10T32-CN07	●	125	32	63	12	10	29			
SMR-160.H12.12T40-CN07	●	160	40	63	12	12	43			




STF The STF slot mills



Model	Stock	Dimensions(mm)						Insert	Screw	Wrench
		D	d	L	T	Z				
STF-2520.1T.GBA32-100L	●	20	16	100	0.8-2.0	1	 GBA32**	 M3.5*8	 T-15	
STF-3225.2T.GBA32-120L	●	25	20	120		2				
STF-4032.3T.GBA32-150L	●	32	25	150		3				

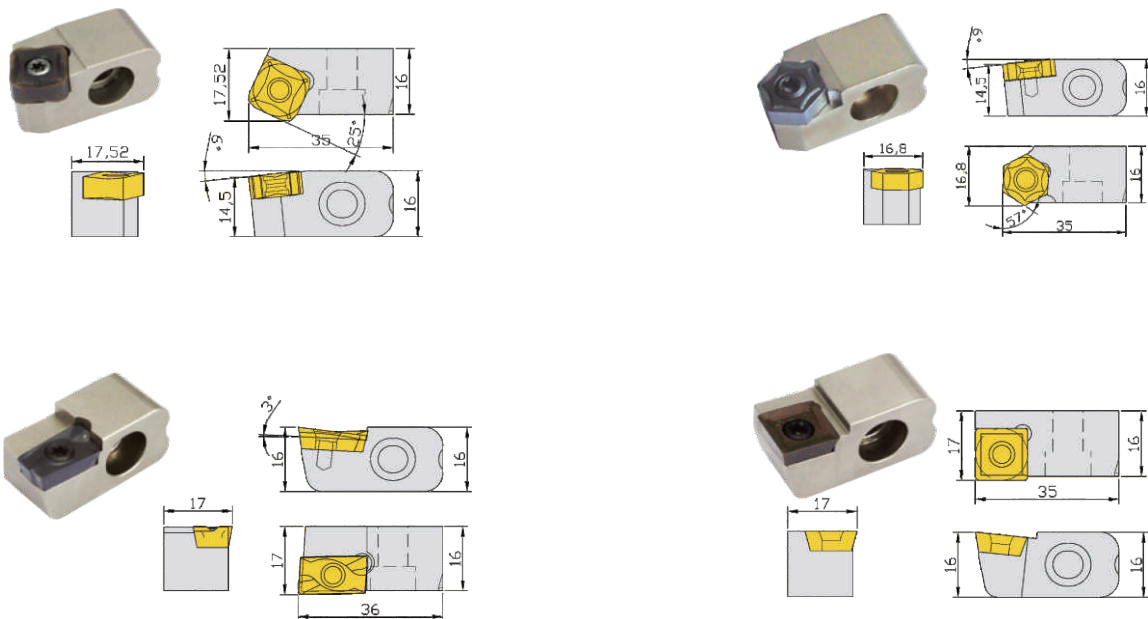
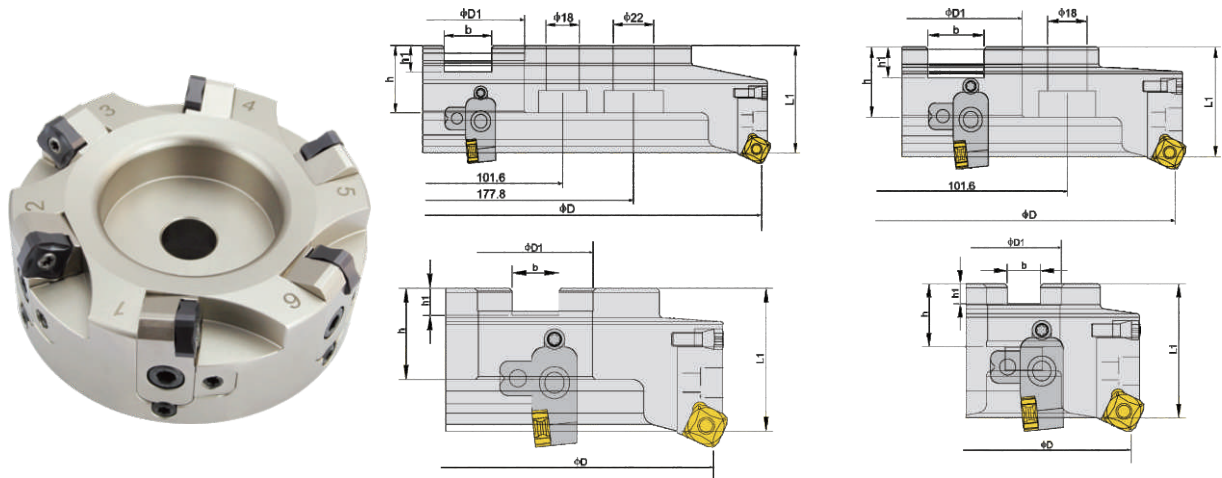
STF The STF slot mills



Model	Stock	Dimensions(mm)						Insert	Screw	Wrench
		D	d	H	T	Z				
STF-054.22.4T.GBA32	●	54	22	40	0.8-2.0	4	 GBA32**	 M3.5*8	 T-15	
STF-063.22.5T.GBA32	●	63	22	40		5				
STF-080.27.6T.GBA32	●	80	27	50		6				
STF-100.32.8T.GBA33	●	100	32	50		8				

● Stock ○ Available upon Order

BBMS Changable mills series



Model	Stock	Dimensions(mm)				Holder	Clamp	Insert	Screw	Wrench	Screw	Screw
		D	D1	L	Z							
BBMS.DP063.22.04T	●	63	22	50	4	DJ-SNMT	BYB1210	SNMT1205	M4*10	L1.5 L3.0 L5.0 T-15	TJLS0510	DGD0620 ST0625
BBMS.DP080.27.05T	●	80	27	50	5							
BBMS.DP100.32.06T	●	100	32	50	6							
BBMS.DP125.40.08T	●	125	40	50	8							
BBMS.DP160.40.10T	●	160	40	50	10							
BBMS.DP200.60.12T	●	200	60	50	12							
BBMS.DP250.60.14T	●	250	60	50	14							
BBMS.DP315.60.16T	●	315	60	58	16							

● Stock ○ Available upon Order