

FORMOVIE



X5

4K Super Bright
Laser Projector

Cinema – like picture quality

- ◆ Brightness: 2450 CVIA lumens (4500 ANSI lumens)
- ◆ 4K UHD + ALPD® laser light source, the screen can be projected up to 1,000 inches
- ◆ AI image quality enhancement + FAV image quality engine
- ◆ FAC color calibration engine, 1.07 billion original color display

Flagship configuration

- ◆ Flagship chip MT9669, equipped with 4+128GB memory
- ◆ HDMI2.1+240HZ super high refresh rate+9ms low delay+WIFI 6MEMC
- ◆ Global MEMC, all-round dynamic anti-shake
- ◆ FSA environmental awareness system, supports environmental light adaptation



Home 4K Video Master

Master – level sound quality

- ◆ Denon custom-designed audio, 270° sound field coverage
- ◆ Left right 2*12W+ tail 6W speakers, showing a sense of stereo surround sound
- ◆ 540cc large sound chamber, rich bass, ethereal treble
- ◆ Sharp tool for viewing movies and also an screen-off speaker

Immersive experience

- ◆ Global correction engine: Omnidirectional auto-correction + Autofocus + Automatic curtain alignment + Intelligent obstacle avoidance + Infinite image zoom
- ◆ Rich interfaces to meet the diverse needs of users

Hardcore Technology with Home Aesthetics

Both decorative and functional

1 power button with 4 far-field voice microphones

Diamond-grade starry glass panel

Using vacuum coating decoration technology, combined with 3D glass for decoration

Smooth variation of film thickness on the same glass substrate

The same color gradient from silver to dark blue, dreamy and smooth, full of technology



Reshape the beauty of projection with weaving

From Kvadrat (a world-renowned top fabric brand)

Recycled eco-fabric, made of 100% recycled fibers, feels delicate and soft

Elegantly designed cooling holes

The powerful performance of the projector requires a lot of heat dissipation, and many cooling holes need to be cut

We transform this unfavorable appearance factor into aesthetics to achieve an aesthetic effect that takes design and practicality into account

China first new brightness standard

CVIA Lumens

Formovie took the lead in initiating, and joined hands with China Electronic Video Industry Association, projection upstream and downstream enterprises and e-commerce platforms to jointly formulate

Before 1990

1990

2023



ANSI brightness standard

Color temperature	/
Color coordinates	/
Test points	9
Test color	White brightness
MP specification	No



CVIA brightness standard

Color temperature	6000-18000K
Color coordinates	CIE1976 uniform color space, color deviation value $Duv \leq 0.015$
Test points	9
Test color	White brightness
MP specification	Yes

■ ■ ■ ■ Brightest in smart projection ■ ■ ■ ■



Usually the brightness of 80" TV is 300nit

Under the same screen size

X5 brightness reaches 320nit

2450CVIA lumens (4500ANSI lumens)

Brighter than TV

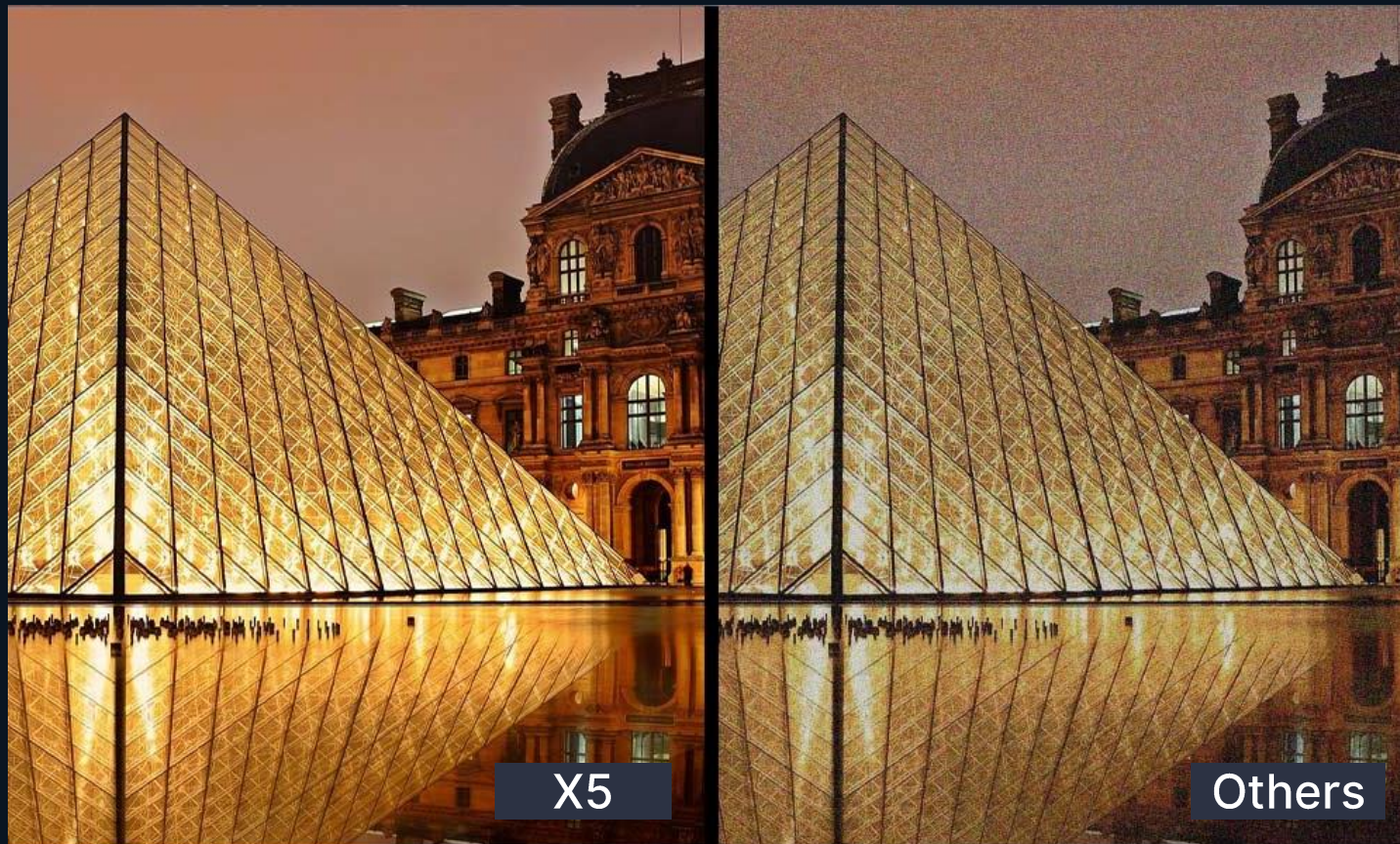
Cinema-level laser projector



ALPD® laser display technology is advanced and mature, safe and reliable. It delivers clear and seamless picture quality without any graininess or speckle defects, and does not harm human eyes. It has been applied in over 28,000 high-end cinema laser projection halls.

<i>Technical comparison</i>	<i>Three-color laser display technology</i>	<i>ALPD® laser display technology</i>
<i>Speckle effect</i>	<i>Speckles, serious screen fuzziness, long-term viewing will cause visual fatigue</i>	<i>No speckles, clean and transparent images, free from any scattered speckles, can be watched for a long time without causing eye strain</i>
<i>Light source effect</i>	<i>The laser light generated by the semiconductor light-emitting device directly enters the human eye without treatment, posing a safety hazard</i>	<i>After secondary modulation, the laser is converted into natural light that is most suitable and eye-friendly for human eyes</i>
<i>Color effect</i>	<i>Oversaturated colors, and distorted image</i>	<i>Not oversaturated colors, truly restored</i>
<i>Color hazard</i>	<i>Misleading human eye color recognition, overexploitation of the human eye</i>	<i>No color hazard, in line with human visual preference</i>
<i>Color dispersion</i>	<i>Serious dispersion problem, color fringes at the front edges</i>	<i>Color dispersion-free, clear and color-fringe-free edges, providing a comfortable viewing experience</i>
<i>Technology precipitation</i>	<i>Short development time and few products, low stability</i>	<i>20 years of technological accumulation, has been applied in 28,000+ commercial cinemas and laser theaters, verified by multiple parties for safety and reliability</i>

ALPD laser vs ordinary triple-color laser



ALPD® 激光显示技术

技术成熟 | 画质清晰 | 无散斑

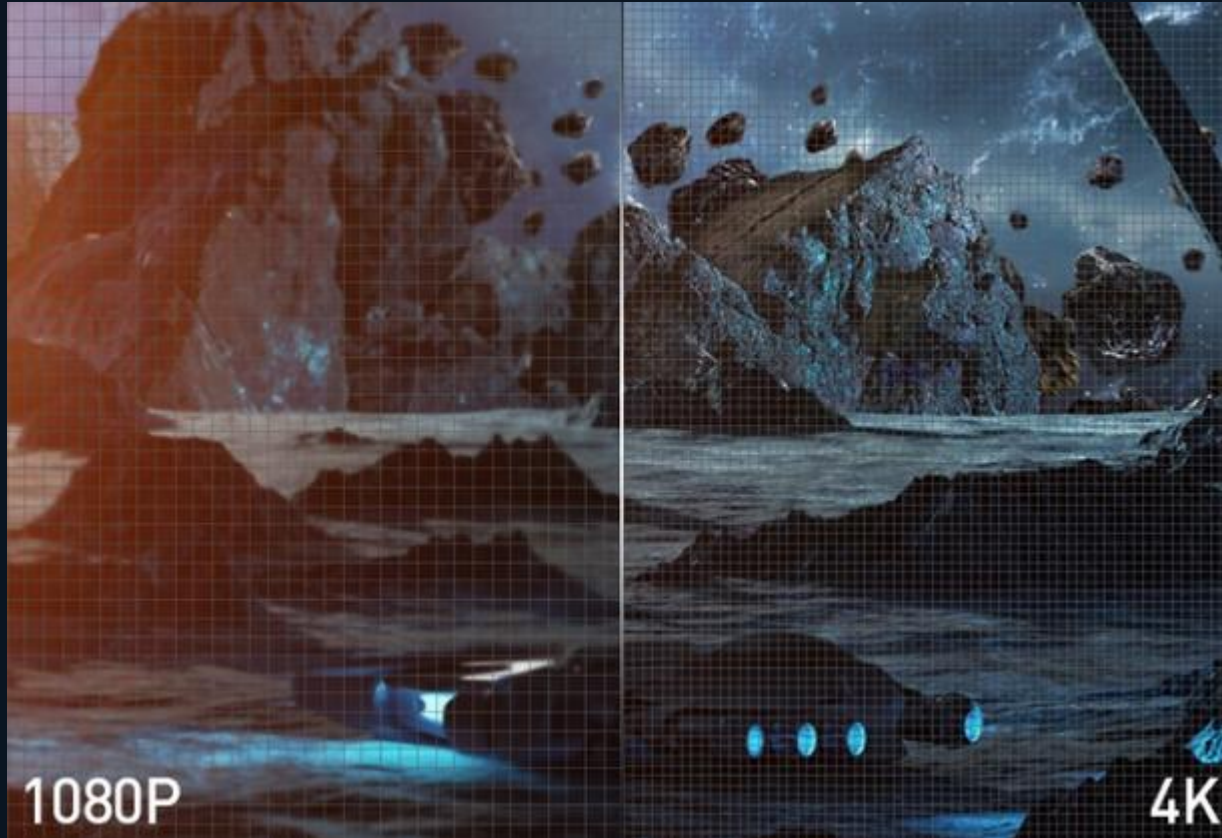
清晰度： 

三色激光显示技术

技术缺陷 | 先天散斑 | 久看易疲劳

清晰度： 

4K Ultra-high-definition



920*1080, 2.07 million independent pixels

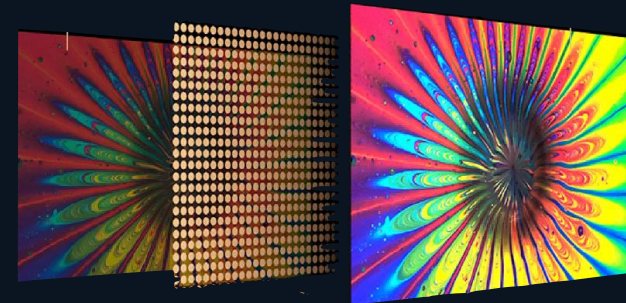
3840*2160, 8.29 million independent pixels

Upgrade Your Home Theater Experience with Commercial Theater Standards

- ◆ 4K Ultra HD with 8.29 million independent pixels
- ◆ HDR10+ Decoding
- ◆ DLC Global Dynamics
- ◆ FAV image quality engine + AI image quality enhancement, dynamic tracking screen, optimized clarity/contrast/saturation
- ◆ AI image biomimetic perception, intelligent recognition of source image type, and targeted optimization of image quality.

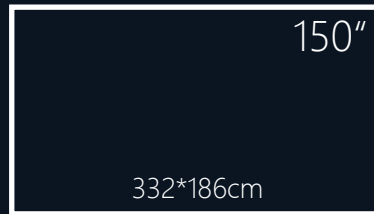
智能分析

像素级优调

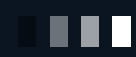


1000"

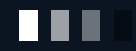
Compared with a thousand-inch 4K giant screen, 150 inches screen is just a toy



2200*1240cm



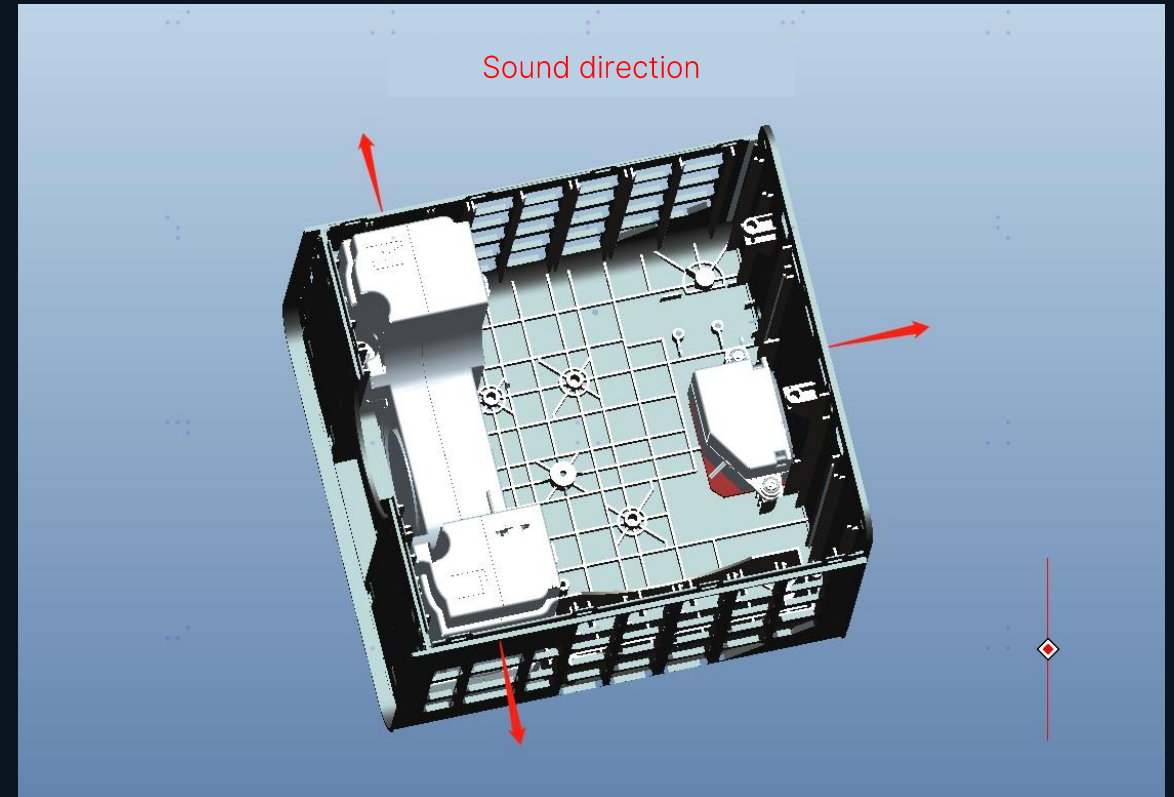
1,000-inch giant screen



▲The actual test shot of Formovie X5 at the giant screen hall of the theater

Master-level effect

- ◆ Cooperate with the DENON to customize and design the sound system, led by the DENON acoustics team, after more than one year, carefully polished the master-level sound system
- ◆ Precise layout of the internal space structure, 3 speakers to achieve 270° sound field coverage, suitable for all placement scenarios
- ◆ Built-in 12W super large speakers on the left and right, and 6W full-range audio at the rear (taking into account viewing habits and mid-to-high frequency sound directions) to achieve an immersive stereo surround sound field
- ◆ 540cc super large sound cavity, mellow bass, ethereal treble
- ◆ Support Dolby Audio and DTS-HD
- ◆ Not only a powerful tool for viewing movies, but also as an off-screen speaker



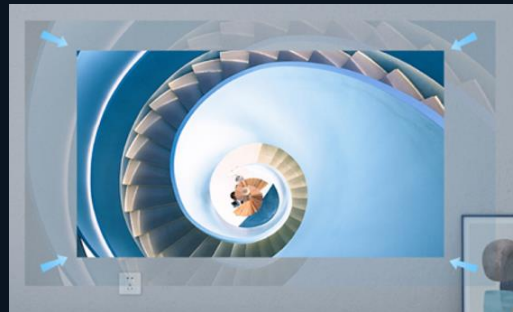
Global correction engine

Omnidirectional
auto-correction



Increased gravity sensor sensitivity
Calibration more accurate

Intelligent
obstacle avoidance



CMOS ultra-high precision camera
collaborative AI Neural Network Actuarial System
Quickly determine the best projected image

Autofocus



ToF sensorless focusing
Real-time monitoring
No interfere with the viewing process

Automatic
curtain alignment



Automatic curtain alignment
No manual adjustment required
Actively enter the screen

Ambient light adaptive

FSA Environmental Awareness System

Collect and identify the light level of the space environment through the Light-Sensor

When the change of light is felt, the change is triggered within 1s, and the stable brightness is achieved within 3s

☀️ Clearer in daylight



☾ Softer at night



Game weapon

240Hz

Ultra high refresh

9ms

Ultra low latency

HDMI 2.1

Direct connection
to game console



- ◆ MT9669 flagship AI chip with super computing power of 1 trillion times per second
- ◆ 4GB+128GB storage, large applications can also run smoothly
- ◆ HDMI 2.1 interface, connect to the game host to achieve lossless output of audio and video
- ◆ Support WIFI 6 for faster network speed and lower network delay
- ◆ 240Hz high refresh rate + 9ms low latency, finger and processor at the same frequency, full gaming experience

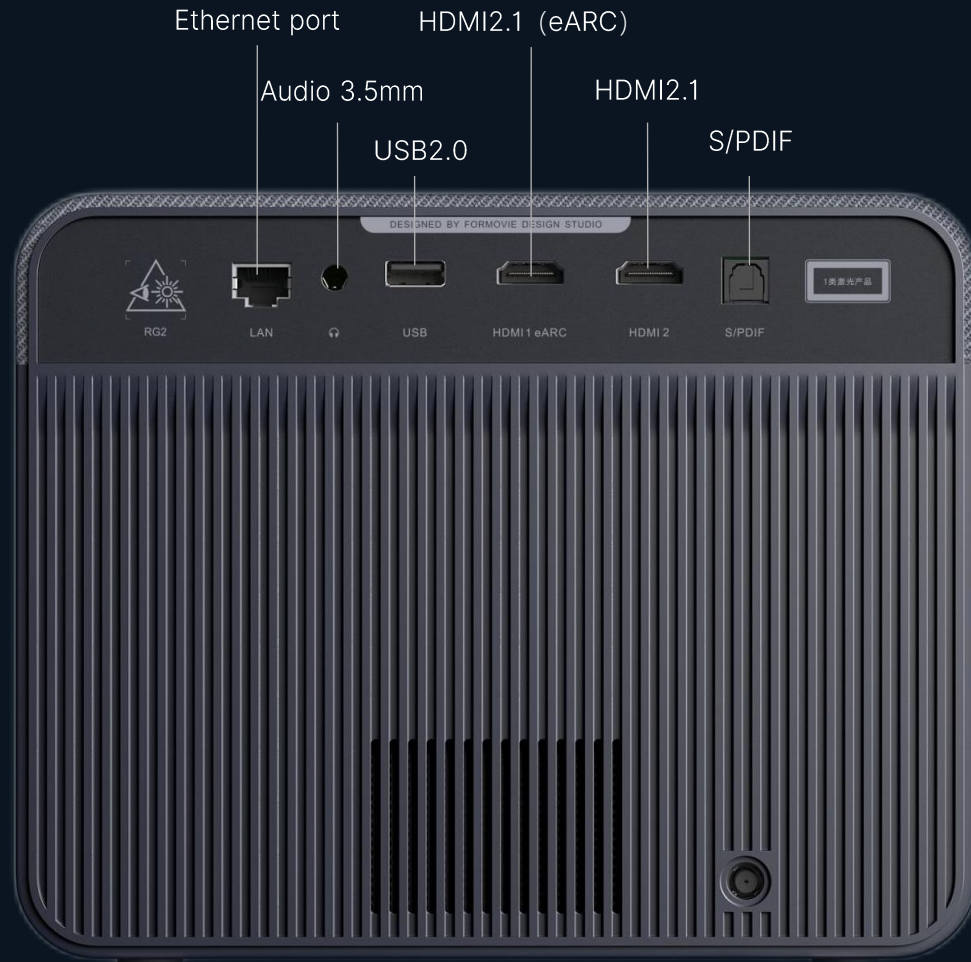
MEMC

All-round dynamic anti-shake technology

Simulate physical judgment and intelligent compensation for the dynamic picture, effectively eliminate picture smearing and afterimage phenomenon, improve dynamic definition, and watch the giant screen more smoothly



Rich interface



USB 2.0: Connect to U disk / hard disk, microphone / sound receiver

HDMI2.1: Connect to computer / game console / box

HDMI(eARC): Audio return, connect to power amplifier

Ethernet port: Network cable / router / hub

S/PDIF: Audio port

Audio 3.5mm: Headphone jack

Product parameters

Product Name Formovie X5 laser projector

Appearance



Optical Parameters

Display	DLP
Display chip	0.47"DMD
Camera lens	High transmittance coated lens
Brightness	2450 CVIA lumens
Standard resolution	3840×2160
Contrast	1200:1
Color gamut	160% Rec.709

Projection Parameters

Throw ratio	1.27:1
Keystone	Omnidirectional auto-correction

System Parameters

CPU	MT9669
RAM/ROM	4+128GB
OS	FengOS 3.0

Interface

HDMI2.1, HDMI2.1(eARC)

USB 2.0×1

LAN×1

S/PDIF×1

Audio 3.5mm×1

WIFI

Dual Band 2.4/5GHz

Bluetooth

5.0 BLE low power consumption

MEMC

Yes

loudspeaker

2*12W+6W Denon

Electrical Specifications

Noise level

28dB

Power consumption

< 220W

Standby power consumption

< 0.5W

Other Parameters

Product dimensions

217x210x167mm

Product weight

3.98kg

Product color

Silver blue

Competitive product comparison

Product model	Formovie X5 	Xgimi RS Pro2 	JMGO N1 Ultra 	Emotn X3 Pro 
Size	217*210*167mm	219*205*154mm	241*236*203mm	246*209*173mm
Weight	3.98 kg	3.98kg	4.5kg	4.6kg
Listing time	2023.04	2021.04	2022.12	2022.05
Resolution	4K (0.47DMD)	4K (0.47DMD)	4K (0.47DMD)	4K (0.47DMD)
Light source	Monochromatic laser	LED	Triple-color laser	Monochromatic laser
Brightness	2450CVIA lumens (4500ANSI lumens)	1100CCB (2200ANSI lumens)	2200CVIA lumens (4000ANSI lumens)	2200CVIA lumens (3200ANSI lumens)
Throw ratio	1.27:1	1.2~1.5:1	1.2:1	1.27:1
Keystone correction	Omnidirectional auto-correction	Omnidirectional auto-correction	Omnidirectional non-sense correction	Omnidirectional auto-correction
Focus	Auto focus + Sensorless focus	Auto focus	Auto focus + Sensorless focus	Auto focus + Sensorless focus
Sound system	2*12W+6W Denon	2*10W Harman Kardon	2*10W Dynaudio	2*10W
Far field voice	Yes	No	Yes	Yes
CPU	MT9669	MT9669	MT9669	MT9669
RAM/ROM	4+128GB	4+128GB	4+64GB	4+128GB
MEMC	Yes	Yes	Yes	Yes
3D	No	Yes	Yes	Yes
Game mode	Yes, 9ms delay	Yes, 10ms delay	Yes, 10ms delay	Yes, 16ms delay
Port	HDMI 2.1*2, USB2.0*1, Audio*1, Ethernet port, SPDIF	HDMI 2.0*1, USB2.0*1, Audio*1, Ethernet port, optical	HDMI 2.1*2, USB2.0*1 Audio*1	HDMI 2.0*2, USB2.0*2, Audio*1, Ethernet port, SPDIF
WiFi	WiFi 6	WiFi 5	WiFi 6	WiFi 5
noise	28dB	28dB	26dB	24dB



T H A N K S