



CAS No.246872-25-3

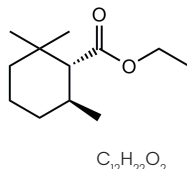
Chiraroma®  
Thesaron®

FRUITY FLORAL ROSE AMBER

Fruity   

## CHEMICAL STRUCTURE

(1R,6S)-Ethyl 2,2,6-trimethylcyclohexanecarboxylate



## APPLICATION INFORMATION

Adds interesting fruity, fresh and rich nuances. Widely used in perfumery compositions requiring a crisp, fruity or rosy note.

## OCCURRENCE IN NATURE

Not found in nature.

## STABILITY

Fine Fragrance	-	GOOD
Fabric Softener	pH 3	GOOD
Antiperspirants	pH 3.5	GOOD
Toiletry Applications	pH 6	GOOD
Liquid Detergent	pH 9	GOOD
Soaps	pH 10	GOOD
Powder Detergent	pH 11	GOOD
Bleach	pH 14	GOOD

## SUBSTANTIVITY

Skin	FAIR
Dry Fabric	FAIR
Wet Fabric	GOOD
Hair	GOOD

## TENACITY ON BLOTTER

>24 HOURS	00 DAYS	00 WEEKS
--------------	------------	-------------

## BLOOM DIFFUSIVITY

DIFFUSIVE

## TYPICAL USE LEVEL

0.1% to 15%

## TECHNICAL DATA

Flash Point °C	100°C
GC	99% min. as Ethyl 2,2,6-trimethylcyclohexanecarboxylate
CAS No.	246872-25-3, 22471-55-2
FEMA / GRAS No.	-
CLogP	4.42

Optical Rotation	+9.0 min
Appearance	Colorless clear liquid
Molecular Weight	198.30
Vapor Pressure	7.670 Pa at 25°C