

惠州市坤宏精密工具有限公司

Hui zhouKunhong Preci si on Tools Co., Ltd.



WhatsApp QR code



WeChat QR code





DIN 69880



A1
Pag. 5



A2
Pag. 6



B1
Pag. 7



B2
Pag. 8



B3
Pag. 9



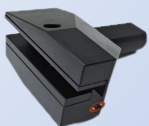
B4
Pag. 10



B5
Pag. 11



B6
Pag. 12



B7
Pag. 13



B8
Pag. 14



C1
Pag. 15



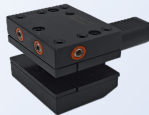
C2
Pag. 16



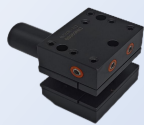
C3
Pag. 17



C4
Pag. 18



D1
Pag. 19



D2
Pag. 20



E1
Pag. 21



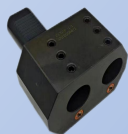
E2
Pag. 23



E3
Pag. 25



E4
Pag. 26



E7
Pag. 27



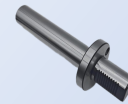
E8
Pag. 27



F
Pag. 28



Z2
Pag. 29



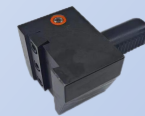
检棒
Pag. 29



AR
Pag. 30



ARU
Pag. 30



ALU
Pag. 31



AL
Pag. 31



拉取器
Pag. 32



APU
Pag. 32



主轴拉力计
Pag. 33



锁紧销
Pag. 34



马扎克刀套
Pag. 34

DIN 69880



TOOLHOLDERS WITH CYLINDRICAL SHANK VDI

TECHNICAL FEATURES

All kuho machinery toolholders are manufactured according to DIN 69880.

CYLINDRICAL SHANK' S TOLERANCE - According to the class IT6 (h6)

COLLET CHUCK' S RUNOUT ACCURACY

▲The norm DIN 69880-6 permits a runout error of 0,02 for DIN 6499 and DIN 6388 collet chucks

▲Manufactured with casehardening steel with hardness HRC 58+-2, strenght 800-1000 N/mm²

▲Internal diameters, shank and tothing are completely grinding finished



VDI刀柄

技术特点

坤宏机械刀座均是根据D IN69880标准制造的。圆柱柄的误差 - 依据 IT6 (H6) 等级弹簧夹头的径向跳动精度D IN 69880-6

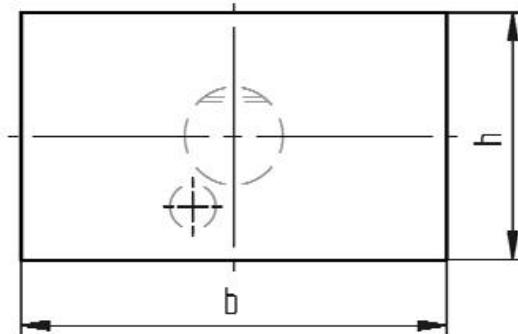
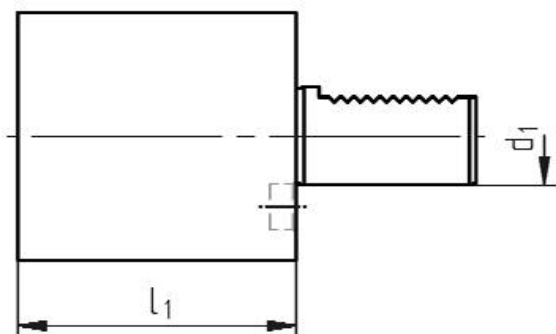
▲标准允许 DIN 6499 和 DIN 6388 弹簧夹头的径向跳动误差为 0.02。

▲用表面硬化钢材制造，硬度达 HRC 58+-2，强度达 800-1000 N/平方毫米。

▲内径、柄和齿间均完全经过打磨处理

本产品为数控车床、车削加工中心等必备附件，严格按照德DIN69880标准生产，具有结构先进、制造精度高、使用方便和互换性强等优点。可选用不同类型规格的刀夹配置，在数控机床上进行车、钻、镗、铣等加工。It is essential machine tool accessories for working center of CNC machine. We produce according to German DIN69880 standard, it features developed structure, high accuracy, convenient and alternative etc. It can satisfy the needs of turning, drilling, boring and milling etc. With various tool holders and allocate different types tool and accessory.

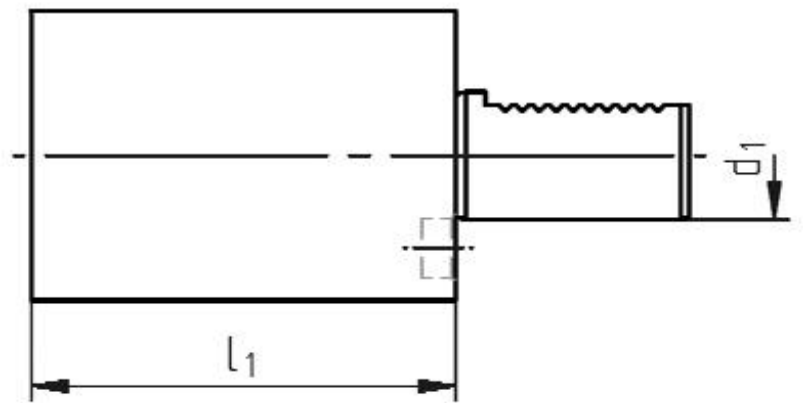
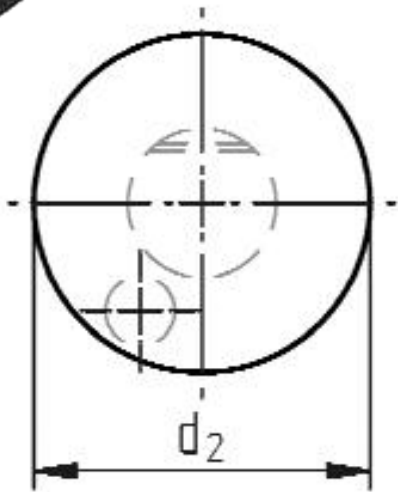
◇专用矩形柄 RECTANGULAR BLANK FOR SPECIAL VERSIONS



订单号Order No.	d1	l1	b	h
A1-16x44	16	44	78	44
A1-20x65	20	65	100	60
A1-25x75	25	75	100	60
A1-30x85	30	85	130	76
A1-40x100	40	100	151	96
A1-50x125	50	125	160	120
A1-60x160	60	160	165	125

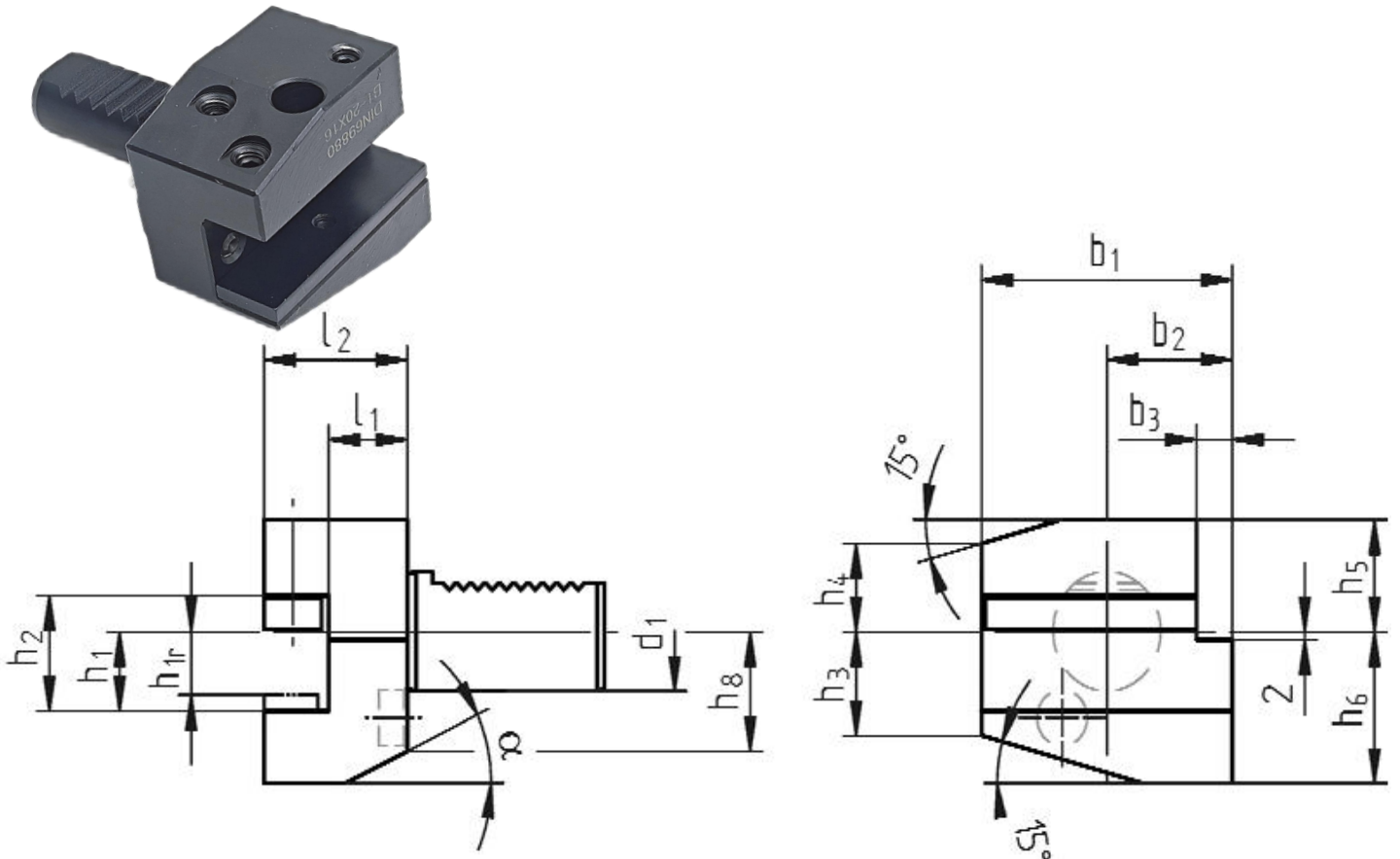
◇ 专用圆形柄

ROUND BLANK FOR SPECIAL VERSIONS



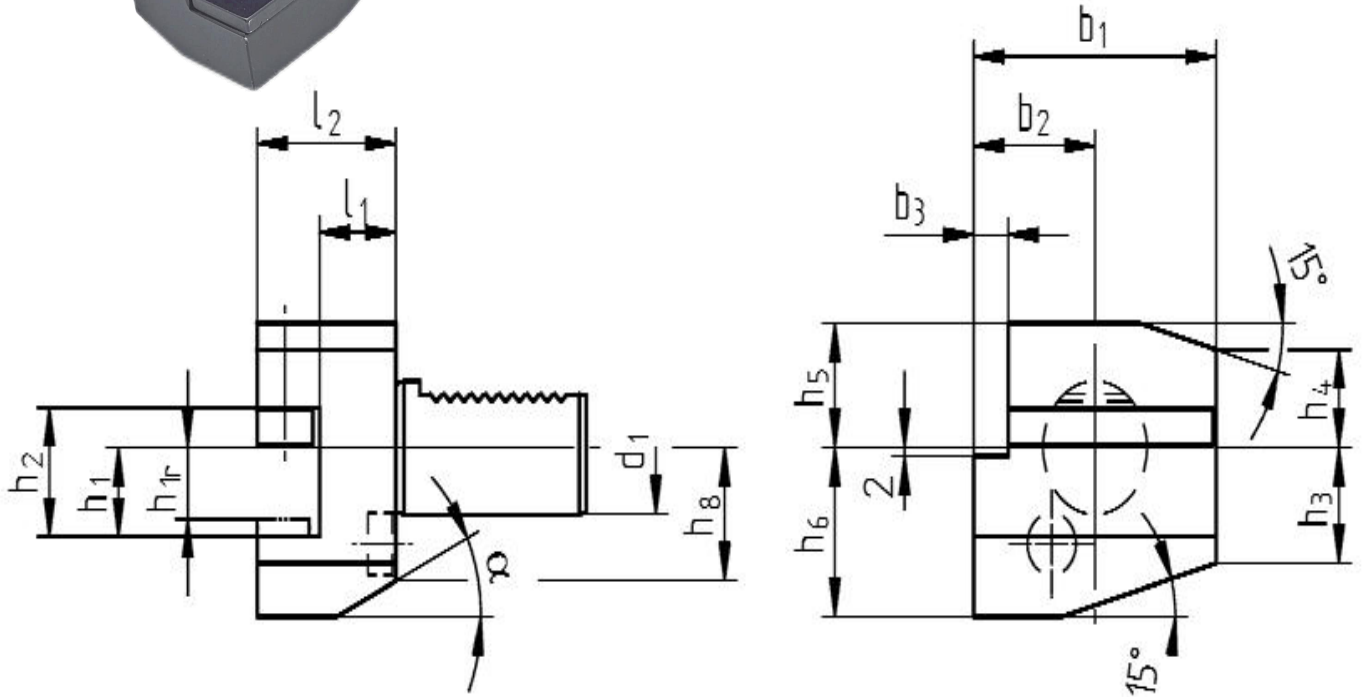
订单号Order No.	d1	l1	d2
A2-16X60	16	60	40
A2-20X70	20	70	50
A2-25X80	25	80	58
A2-25X200	25	200	58
A2-30X100	30	100	68
A2-30X240	30	240	68
A2-40X120	40	120	83
A2-40X200	40	200	83
A2-40X320	40	320	83
A2-50X135	50	135	98
A2-50X220	50	220	98
A2-50X400	50	400	98
A2-60X150	60	150	123
A2-60X480	60	480	123

◇ B1型径向右刀夹 TYPE B1 TOOL HOLDER with square crossholding fixture right,short



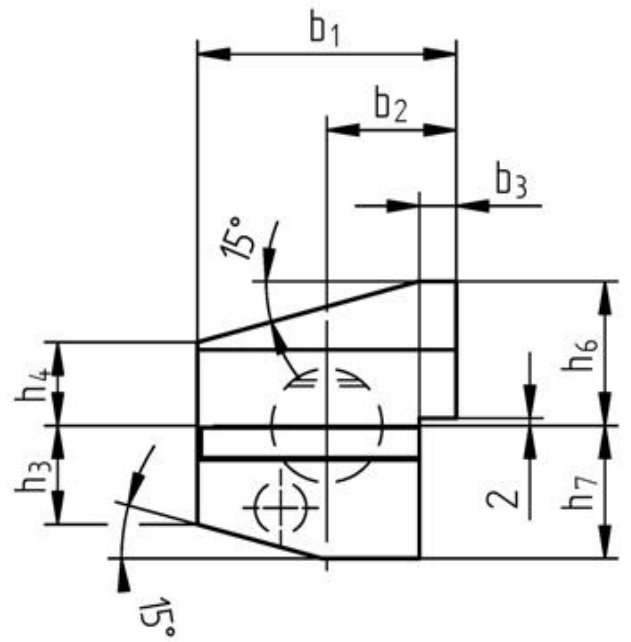
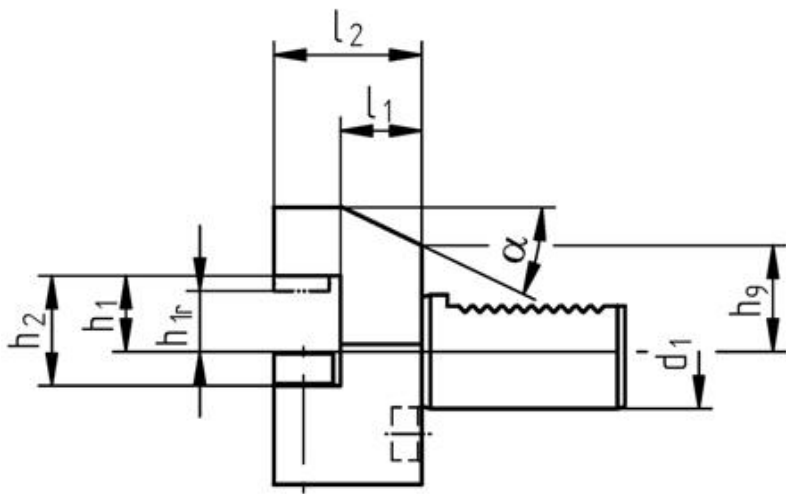
订单号 Order No.	d1	b1	b2	b3	h1	h2	h3	h4	h5	h6	h8	11	12	α
B1-16X12X24	16	42	23	5	12	17	15	15	20	22	19	13	24	30°
B1-16X12X34	16	42	23	5	12	17	15	15	20	22	19	23	34	30°
B1-20X16X30	20	55	30	7	16/12	22	19	19	25	30	23	16	30	30°
B1-20X16X40	20	55	30	7	16/12	22	19	19	25	30	23	26	40	30°
B1-25X16X30	25	55	30	7	16/12	22	22.5	22.5	25	30	23	16	30	30°
B1-25X16X40	25	55	30	7	16/12	22	22.5	22.5	25	30	23	26	40	30°
B1-30X20X40	30	70	35	10	20/16	29	26	22	28	38	30	22	40	25°
B1-30X20X60	30	70	35	10	20/16	29	26	22	28	38	30	42	60	25°
B1-40X25X44	40	85	42.5	12.5	25/20	34	35	30	32.5	48	---	22	44	---
B1-50X32X55	50	100	50	16	32/25	41	42	35	35	60	---	30	55	---
B1-60X32X60	60	125	62.5	16	32/25	41	46	42.5	42.5	62.5	---	30	60	---

◇ B2型径向左刀夹 TYPE B2 TOOL HOLDER
with square crossholding fixture left, short



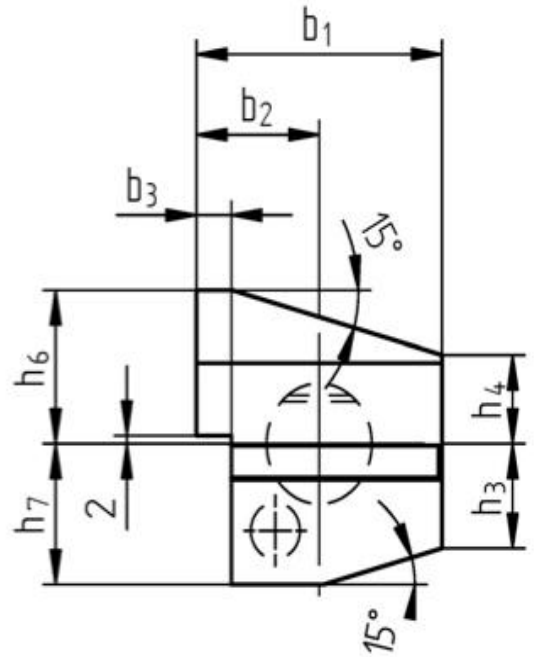
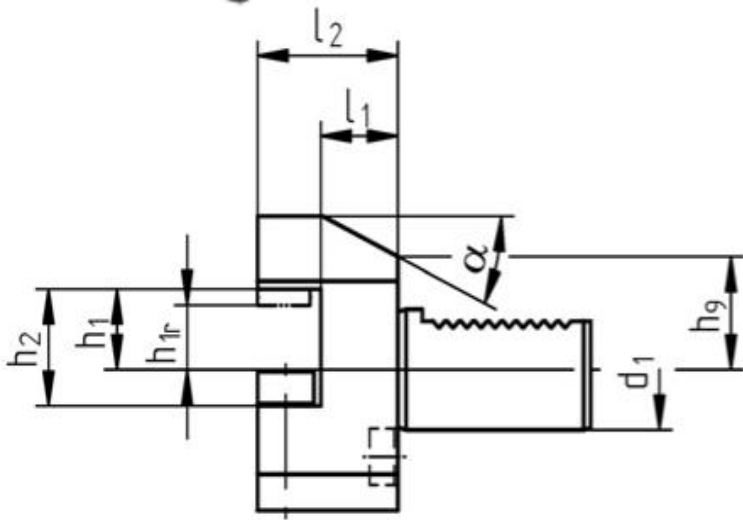
订单号 Order No.	d1	b1	b2	b3	h1	h2	h3	h4	h5	h6	h8	11	12	α
B2-16X12X24	16	42	23	5	12	17	15	15	20	22	19	13	24	30°
B2-16X12X34	16	42	23	5	12	17	15	15	20	22	19	23	34	30°
B2-20X16X30	20	55	30	7	16/12	22	19	19	25	30	23	16	30	30°
B2-20X16X40	20	55	30	7	16/12	22	19	19	25	30	23	26	40	30°
B2-25X16X30	25	55	30	7	16/12	22	22.5	22.5	25	30	25	16	30	30°
B2-25X16X40	25	55	30	7	16/12	22	22.5	22.5	25	30	25	26	40	30°
B2-30X20X40	30	70	35	10	20/16	29	26	22	28	38	30	22	40	25°
B2-30X20X60	30	70	35	10	20/16	29	26	22	28	38	30	42	60	25°
B2-40X25X44	40	85	42.5	12.5	25/20	34	35	30	32.5	48	—	22	44	—
B2-50X32X55	50	100	50	16	32/25	41	42	35	35	60	—	30	55	—
B2-60X32X60	60	125	62.5	16	32/25	41	46	42.5	42.5	62.5	—	30	60	—

◇ B3型径向右刀夹 (刀具反装) TYPE B3 TOOL HOLDER with square crossholding fixture overhead right, short



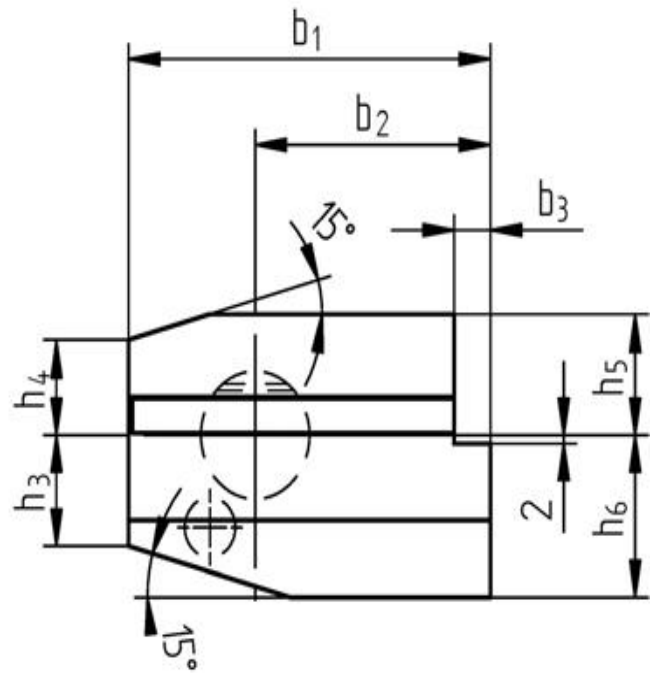
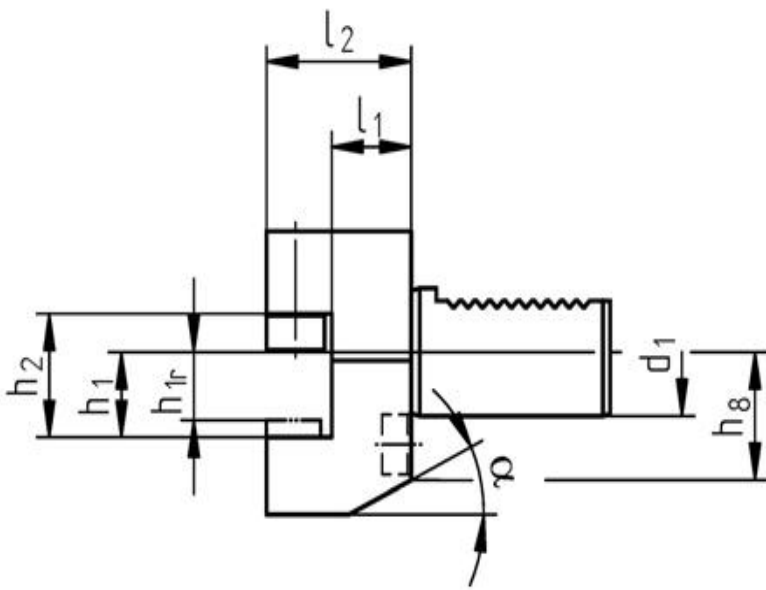
订单号 Order No.	d1	b1	b2	b3	h1	h2	h3	h4	h6	h7	h9	11	12	α
B3-16X12X24	16	42	23	5	12	17	15	15	22	20	19	13	24	30°
B3-16X12X34	16	42	23	5	12	17	15	15	22	20	19	23	34	30°
B3-20X16X30	20	55	30	7	16/12	22	19	19	30	25	23	16	30	30°
B3-20X16X40	20	55	30	7	16/12	22	19	19	30	25	23	26	40	30°
B3-25X16X30	25	55	30	7	16/12	22	22.5	22.5	30	25	25	16	30	30°
B3-25X16X40	25	55	30	7	16/12	22	22.5	22.5	30	25	25	26	40	30°
B3-30X20X40	30	70	35	10	20/16	29	26	22	38	35	28	22	40	25°
B3-30X20X60	30	70	35	10	20/16	29	26	22	38	35	28	42	60	25°
B3-40X25X44	40	85	42.5	12.5	25/20	34	35	30	48	42.8	—	22	44	—
B3-50X32X55	50	100	50	16	32/25	41	42	35	60	50	—	30	55	—
B3-60X32X60	60	125	62.5	16	32/25	41	46	42.5	62.5	62.5	—	30	60	—

◇ B4型径向左刀夹(刀具反装) TYPE B4 TOOL HOLDER
with square crossholding fixture overhead left,short



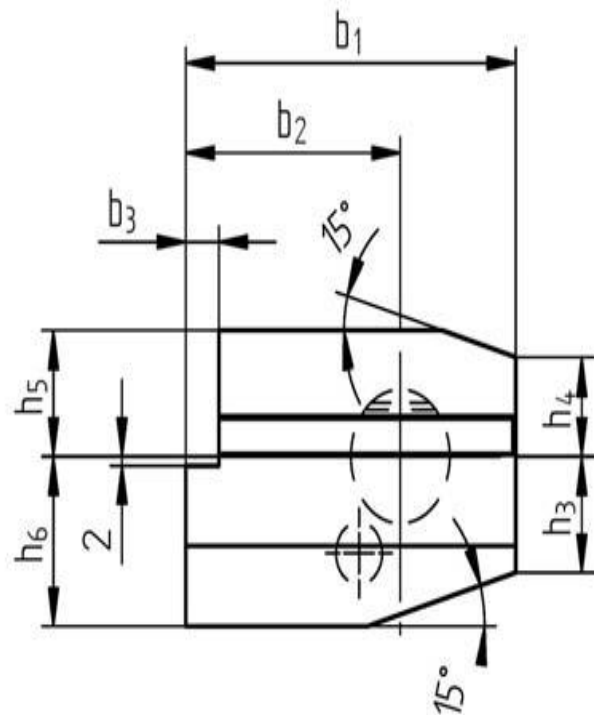
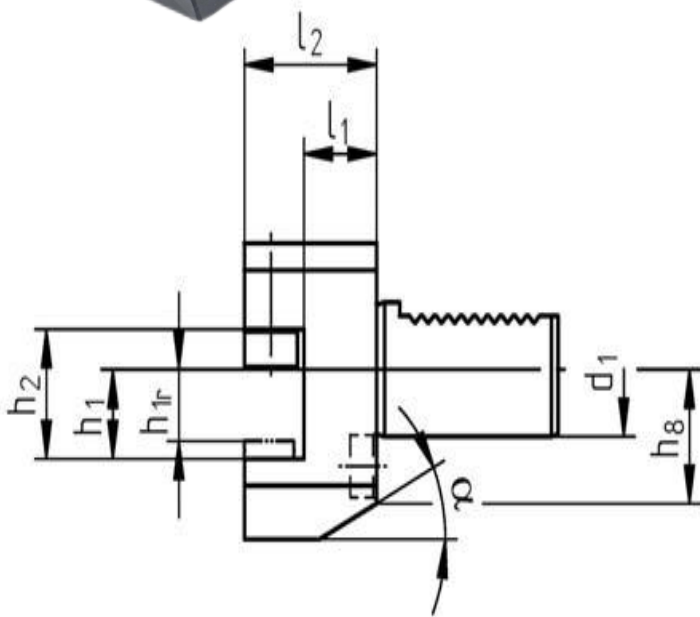
订单号 Order No.	d1	b1	b2	b3	h1	h2	h3	h4	h6	h7	h9	11	12	α
B4-16X12X24	16	42	23	5	12	17	15	15	22	20	19	13	24	30°
B4-16X12X34	16	42	23	5	12	17	15	15	22	20	19	23	34	30°
B4-20X16X30	20	55	30	7	16/12	22	19	19	30	25	23	16	30	30°
B4-20X16X40	20	55	30	7	16/12	22	19	19	30	25	23	26	40	30°
B4-25X16X30	25	55	30	7	16/12	22	22.5	22.5	30	25	25	16	30	30°
B4-25X16X40	25	55	30	7	16/12	22	22.5	22.5	30	25	25	26	40	30°
B4-30X20X40	30	70	35	10	20/16	29	26	22	38	35	28	22	40	25°
B4-30X20X60	30	70	35	10	20/16	29	26	22	38	35	28	42	60	25°
B4-40X25X44	40	85	42.5	12.5	25/20	34	35	30	48	42.5	—	22	44	—
B4-50X32X55	50	100	50	16	32/25	41	42	35	60	50	—	30	55	—
B4-60X32X60	60	125	62.5	16	32/25	41	46	42.5	62.5	62.5	—	30	60	—

◇ B5型径向右刀夹(加长型) TYPE B5 TOOL HOLDER with square crossholding fixture right, long



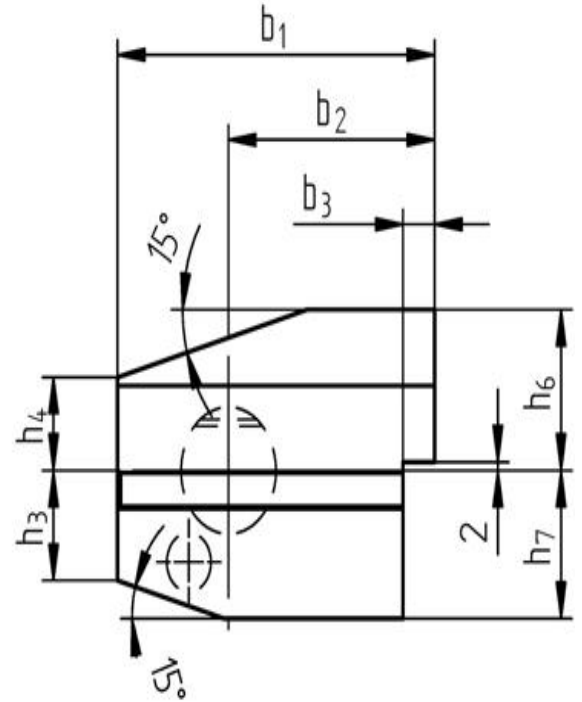
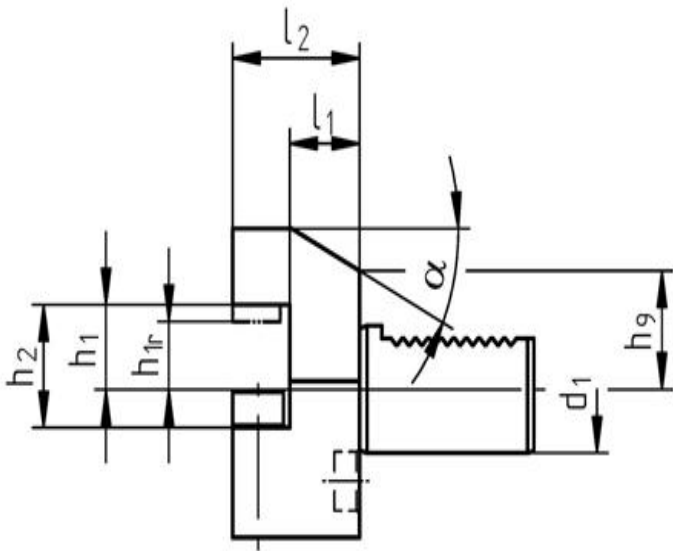
订单号 Order No.	d1	b1	b2	b3	h1	h2	h3	h4	h5	h6	h8	11	12	α
B5-16X12X24	16	58	39	5	12	17	15	15	20	22	19	13	24	30°
B5-16X12X34	16	58	39	5	12	17	15	15	20	22	19	23	34	30°
B5-20X16X30	20	75	50	7	16/12	22	19	19	25	30	23	16	30	30°
B5-20X16X40	20	75	50	7	16/12	22	19	19	25	30	23	26	40	30°
B5-25X16X30	25	75	50	7	16/12	22	22.5	22.5	25	30	25	16	30	30°
B5-25X16X40	25	75	50	7	16/12	22	22.5	22.5	25	30	25	26	40	30°
B5-30X20X40	30	100	65	10	20/16	29	26	22	28	38	30	22	40	25°
B5-30X20X60	30	100	65	10	20/16	29	26	22	28	38	30	42	60	25°
B5-40X25X44	40	118	75.5	12.5	25/20	34	35	30	32.5	48	—	22	44	—
B5-50X32X55	50	130	80	16	32/25	41	42	35	35	60	—	30	55	—
B5-60X32X60	60	145	82.5	16	32/25	41	46	42.5	42.5	62.5	—	30	60	—

◇ B6型径向左刀夹 (加长型) TYPE B6 TOOL HOLDER
with square crossholding fixture left, long



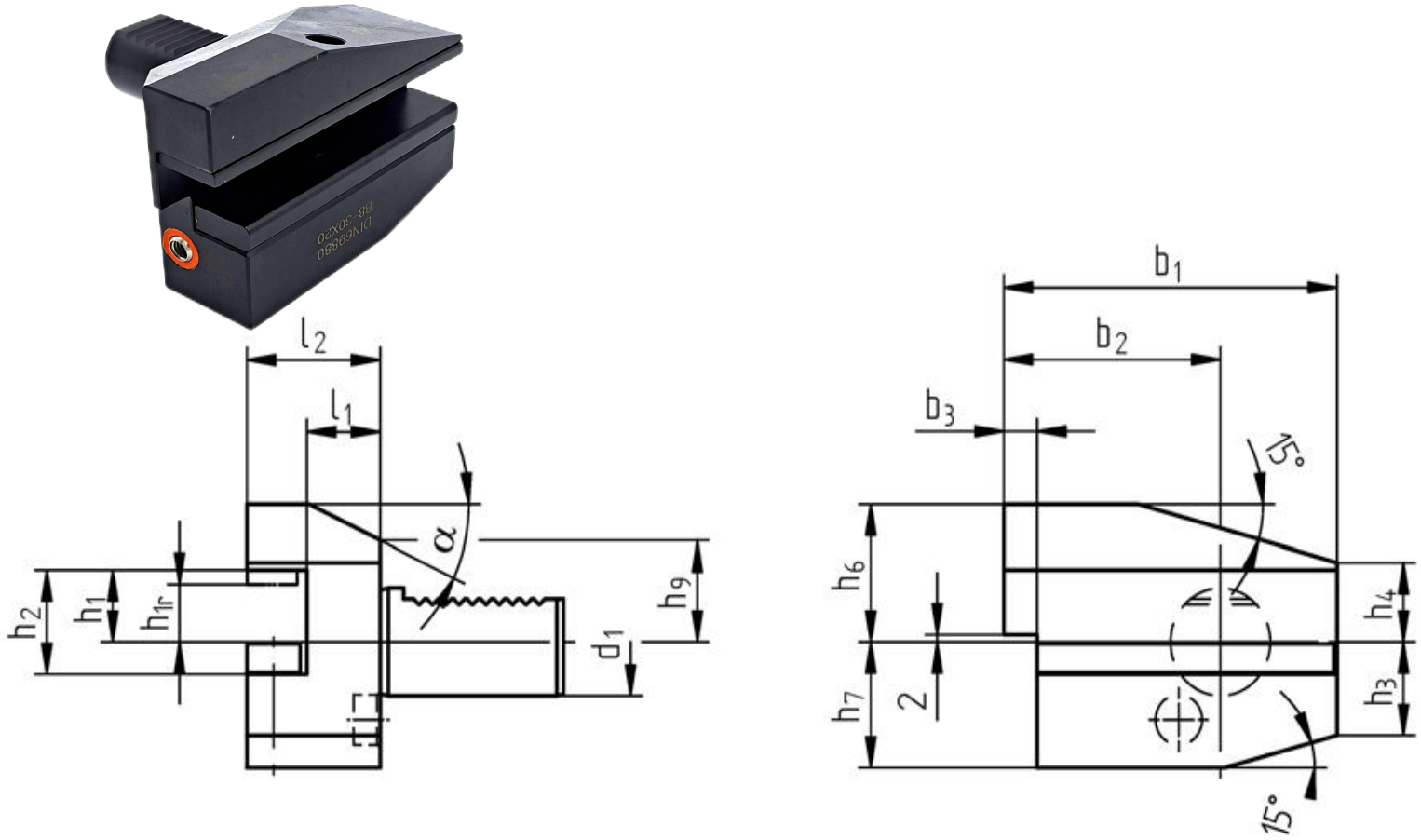
订单号Order No.	d1	b1	b2	b3	h1	h2	h3	h4	h5	h6	h8	11	12	α
B6-16X12X24	16	58	39	5	12	17	15	15	20	22	19	13	24	30°
B6-16X12X34	16	58	39	5	12	17	15	15	20	22	19	23	34	30°
B6-20X16X30	20	75	50	7	16/12	22	19	19	25	30	23	16	30	30°
B6-20X16X40	20	75	50	7	16/12	22	19	19	25	30	23	26	40	30°
B6-25X16X30	25	75	50	7	16/12	22	22.5	22.5	25	30	25	16	30	30°
B6-25X16X40	25	75	50	7	16/12	22	22.5	22.5	25	30	25	26	40	30°
B6-30X20X40	30	100	65	10	20/16	29	26	22	28	38	30	22	40	25°
B6-30X20X60	30	100	65	10	20/16	29	26	22	28	38	30	42	60	25°
B6-40X25X44	40	118	75.5	12.5	25/20	34	35	30	32.5	48	---	22	44	---
B6-50X32X55	50	130	80	16	32/25	41	42	35	35	60	---	30	55	---
B6-60X32X60	60	145	82.5	16	32/25	41	46	42.5	42.5	62.5	---	30	60	---

◇B7型径向右刀夹 (加长型、刀具反装) TYPE B7 TOOL HOLDER with square crossholding fixture overhead right, long



订单号 Order No.	d1	b1	b2	b3	h1	h2	h3	h4	h6	h7	h9	11	12	α
B7-16X12X24	16	58	39	5	12	17	15	15	22	20	19	13	24	30°
B7-16X12X34	16	58	39	5	12	17	15	15	22	20	19	23	34	30°
B7-20X16X30	20	75	50	7	16/12	22	19	19	30	25	23	16	30	30°
B7-20X16X40	20	75	50	7	16/12	22	19	19	30	25	23	26	40	30°
B7-25X16X30	25	75	50	7	16/12	22	22.5	22.5	30	25	25	16	30	30°
B7-25X16X40	25	75	50	7	16/12	22	22.5	22.5	30	25	25	26	40	30°
B7-30X20X40	30	100	65	10	20/16	29	26	22	38	35	28	22	40	25°
B7-30X20X60	30	100	65	10	20/16	29	26	22	38	35	28	42	60	25°
B7-40X25X44	40	118	75.5	12.5	25/20	34	35	30	48	42.5	—	22	44	—
B7-50X32X55	50	130	80	16	32/25	41	42	35	60	50	—	30	55	—
B7-60X32X60	60	145	82.5	16	32/25	41	46	42.5	62.5	62.5	—	30	60	—

◇ B8型径向左刀夹(加长型、刀具反装) TYPE B8 TOOL HOLDER
with square crossholding fixture overhead left,long

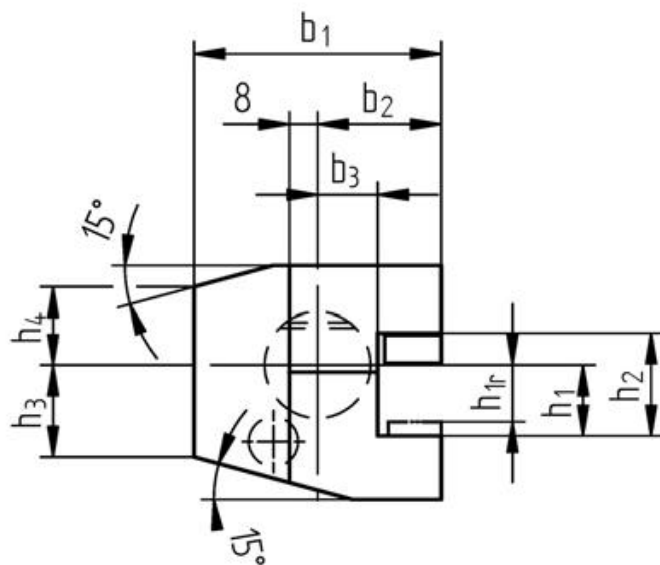
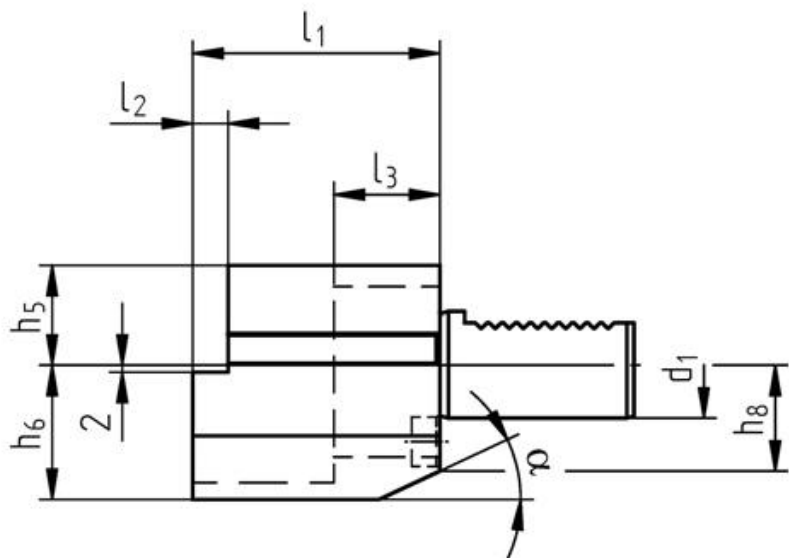


订单号 Order No.	d1	b1	b2	b3	h1	h2	h3	h4	h6	h7	h9	11	12	α
B8-16X12X24	16	58	39	5	12	17	15	15	22	20	19	13	24	30°
B8-16X12X34	16	58	39	5	12	17	15	15	22	20	19	23	34	30°
B8-20X16X30	20	75	50	7	16/12	22	19	19	30	25	23	16	30	30°
B8-20X16X40	20	75	50	7	16/12	22	19	19	30	25	23	26	40	30°
B8-25X16X30	25	75	50	7	16/12	22	22.5	22.5	30	25	25	16	30	30°
B8-25X16X40	25	75	50	7	16/12	22	22.5	22.5	30	25	25	26	40	30°
B8-30X20X40	30	100	65	10	20/16	29	26	22	38	35	28	22	40	25°
B8-30X20X60	30	100	65	10	20/16	29	26	22	38	35	28	42	60	25°
B8-40X25X44	40	118	75.5	12.5	25/20	34	35	30	48	42.5	—	22	44	—
B8-50X32X55	50	130	80	16	32/25	41	42	35	60	50	—	30	55	—
B8-60X32X60	60	145	82.5	16	32/25	41	46	42.5	62.5	62.5	—	30	60	—

◇ C1型轴向右刀夹

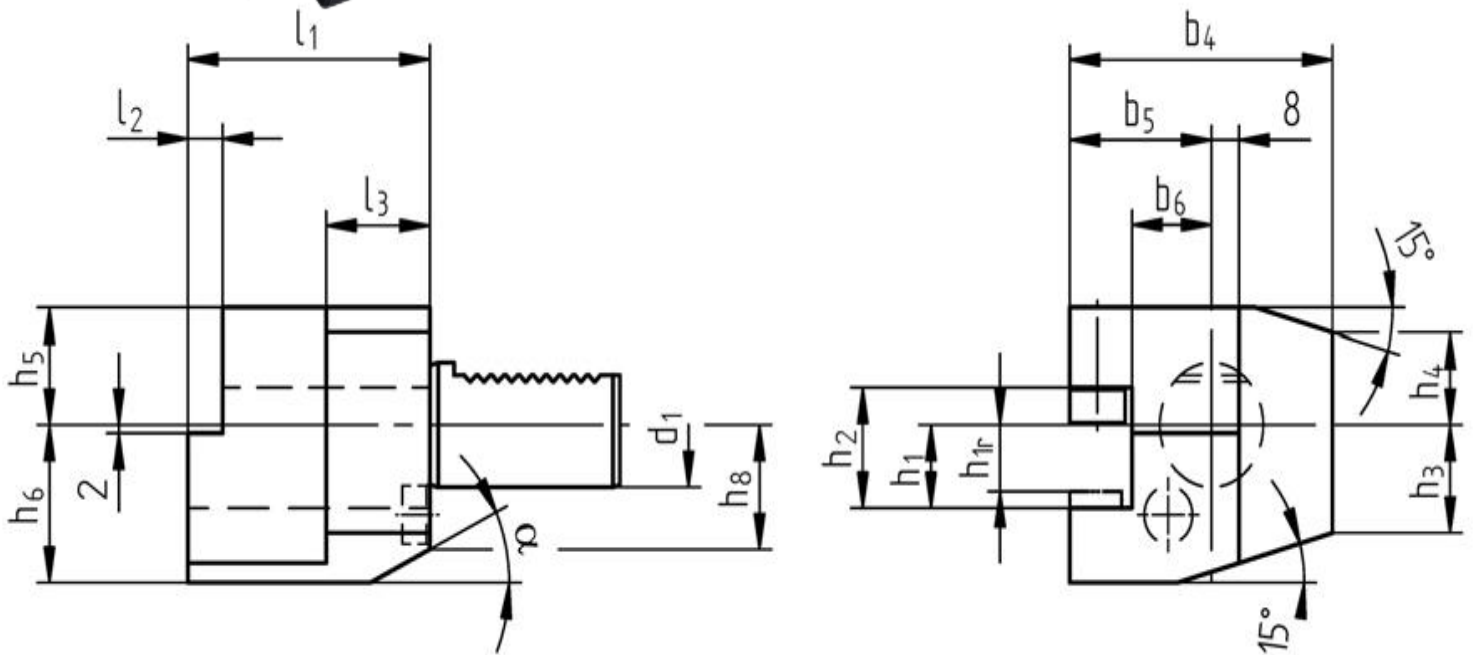
TYPE C1 TOOL HOLDER

with longitudinal square holding fixture, right



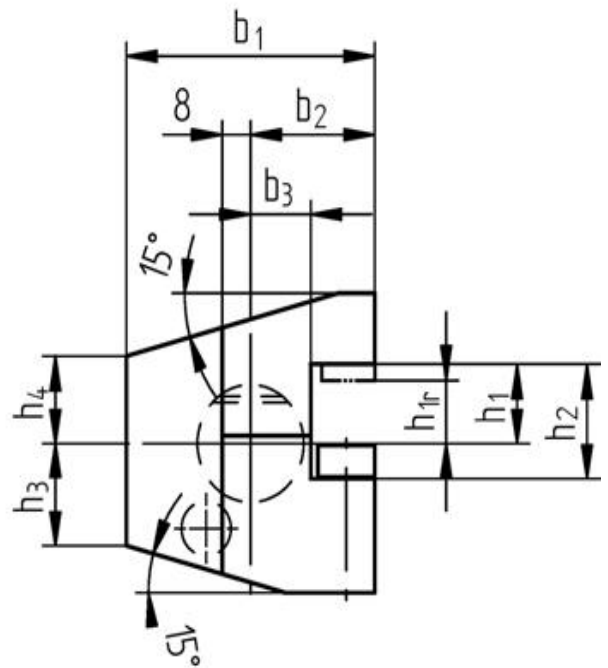
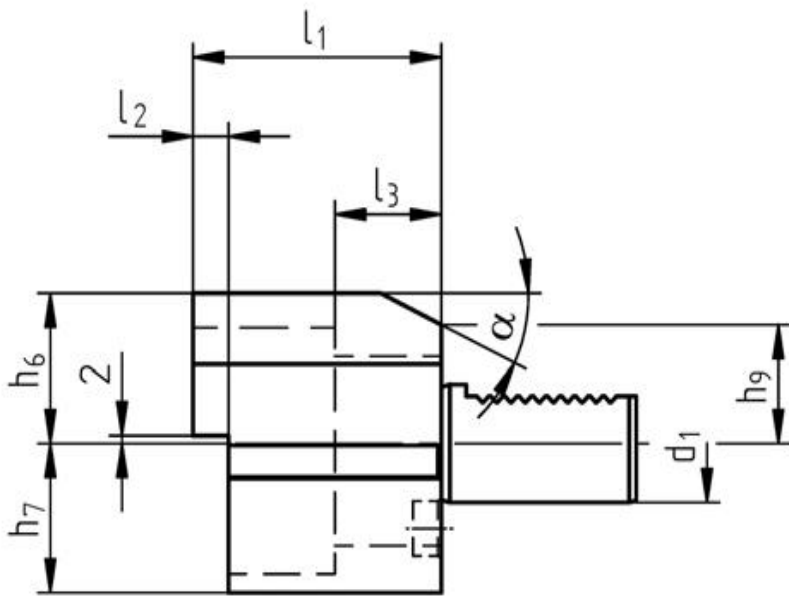
订单号 Order No.	d1	b1	b2	b3	h1	h2	h3	h4	h5	h6	h8	l1	l2	l3	α
C1-16X12	16	43	24	13	12	17	15	15	20	22	19	44	5	20	30°
C1-20X16/55	20	52	27	13	16/12	22	19	19	25	30	23	55	7	30	30°
C1-20X16/50	20	52	27	13	16/12	22	19	19	25	30	23	50	—	30	30°
C1-25X16	25	58	33	19	16/12	22	22.5	22.5	25	30	25	55	7	20	30°
C1-25X20	25	62	37	19	20/16	29	22.5	22.5	28	35	28	55	7	20	30°
C1-30X20	30	70	35	17	20/16	29	26	22	28	38	30	70	10	30	25°
C1-40X25	40	85	45.5	21	25/20	34	35	30	32.5	48	—	85	12.5	30	—
C1-50X32	50	100	50	26	32/25	41	42	35	35	60	—	100	16	40	—
C1-60X32	60	125	62.5	33	32/25	41	46	42.5	42.5	62.5	—	125	16	40	—

◇ C2型轴向左刀夹 TYPE C2 TOOL HOLDER
with longitudinal square holding fixture, left



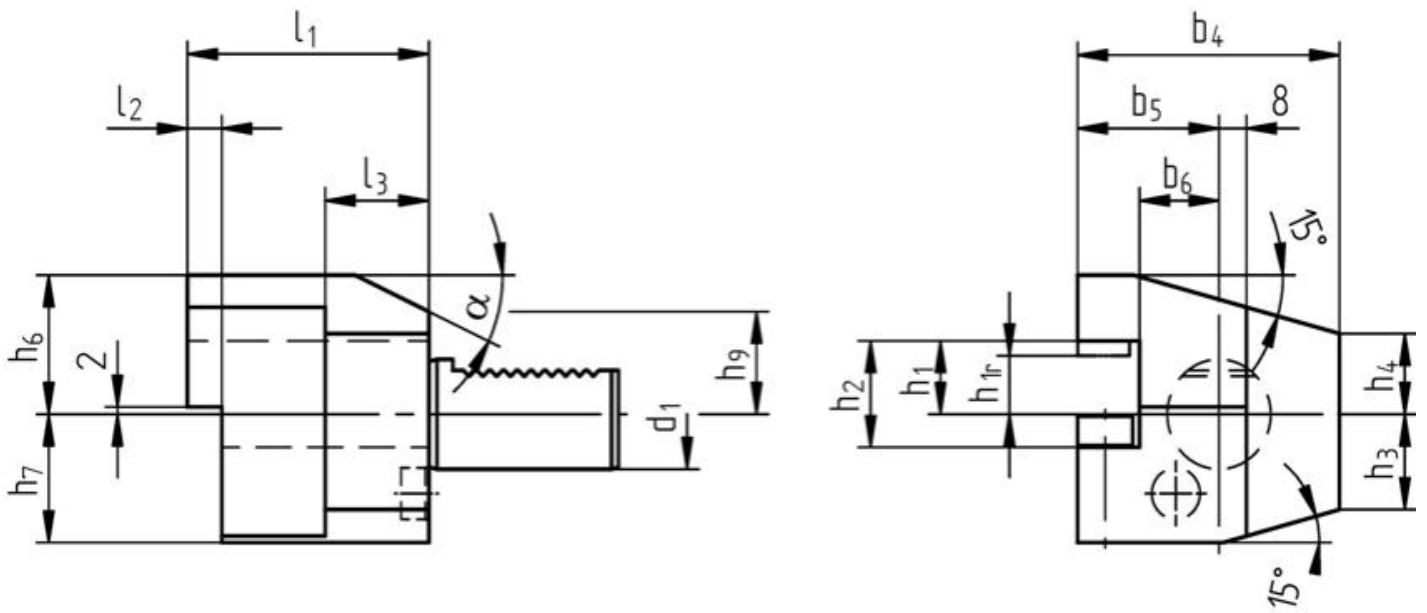
订单号 Order No.	d1	b4	b5	b6	h1	h2	h3	h4	h5	h6	h8	l1	l2	l3	α
C2-16X12	16	43	24	13	12	17	15	15	20	22	19	44	5	20	30°
C2-20X16/55	20	—	—	—	16/12	22	19	19	25	30	23	55	7	30	30°
C2-20X16/50	20	65	40	26	16/12	22	19	19	25	30	23	50	—	30	30°
C2-25X16	25	58	33	19	16/12	22	22.5	22.5	25	30	25	55	7	20	30°
C2-25X20	25	62	37	19	20/16	29	22.5	22.5	28	35	28	55	7	20	30°
C2-30X20	30	76	41	23	20/16	29	26	22	28	38	30	70	10	30	25°
C2-40X25	40	90	47.5	25.5	25/20	34	35	30	32.5	48	—	85	12.5	30	—
C2-50X32	50	105	55	30.5	32/25	41	42	35	35	60	—	100	16	40	—
C2-60X32	60	125	62.5	33	32/25	41	46	42.5	42.5	62.5	—	125	16	40	—

◇ C3型轴向右刀夹(刀具反装) TYPE C3 TOOL HOLDER
with longitudinal square holding fixture overhead, right



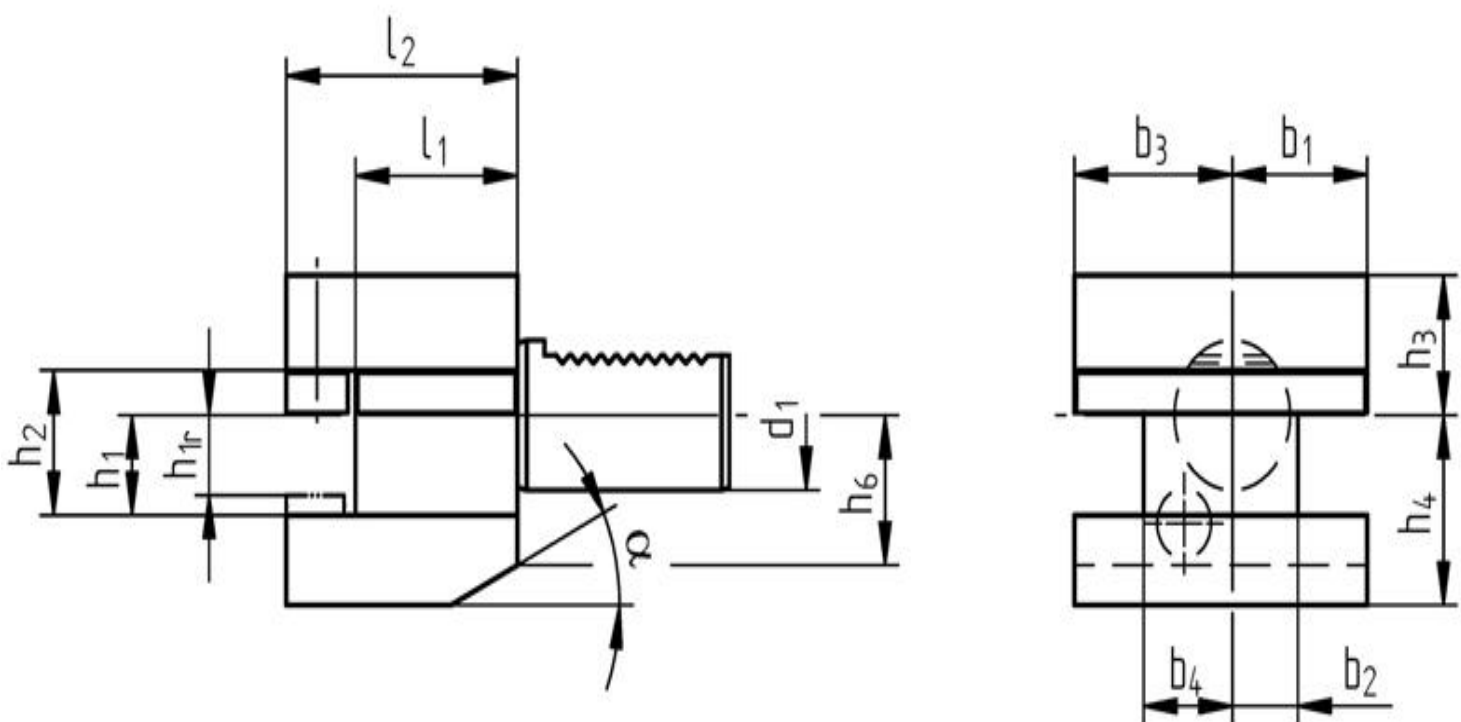
订单号Order No.	d1	b1	b2	b3	h1	h2	h3	h4	h6	h7	h9	l1	l2	l3	α
C3-16X12	16	43	24	13	12	17	15	15	22	20	19	44	5	20	30°
C3-20X16/55	20	52	27	13	16/12	22	19	19	30	25	23	55	7	30	30°
C3-20X16/50	20	65	40	26	16/12	22	19	19	30	25	23	50	—	30	30°
C3-25X16	25	58	33	19	16/12	22	22.5	22.5	30	25	25	55	7	20	30°
C3-25X20	25	62	37	19	20/16	29	22.5	22.5	35	28	28	55	7	20	30°
C3-30X20	30	70	35	17	20/16	29	26	22	38	35	28	70	10	30	25°
C3-40X25	40	85	42.5	21	25/20	34	35	30	48	42.5	—	85	12.5	30	—
C3-50X32	50	100	50	26	32/25	41	42	35	60	50	—	100	16	40	—
C3-60X32	60	125	62.5	33	32/25	41	46	42.5	62.5	62.5	—	125	16	40	—

◇ C4型轴向左刀夹(刀具反装) TYPE C4 TOOL HOLDER
with longitudinal square holding fixture overhead, left



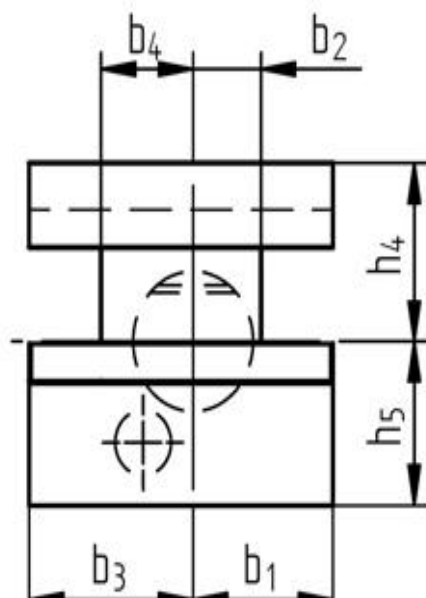
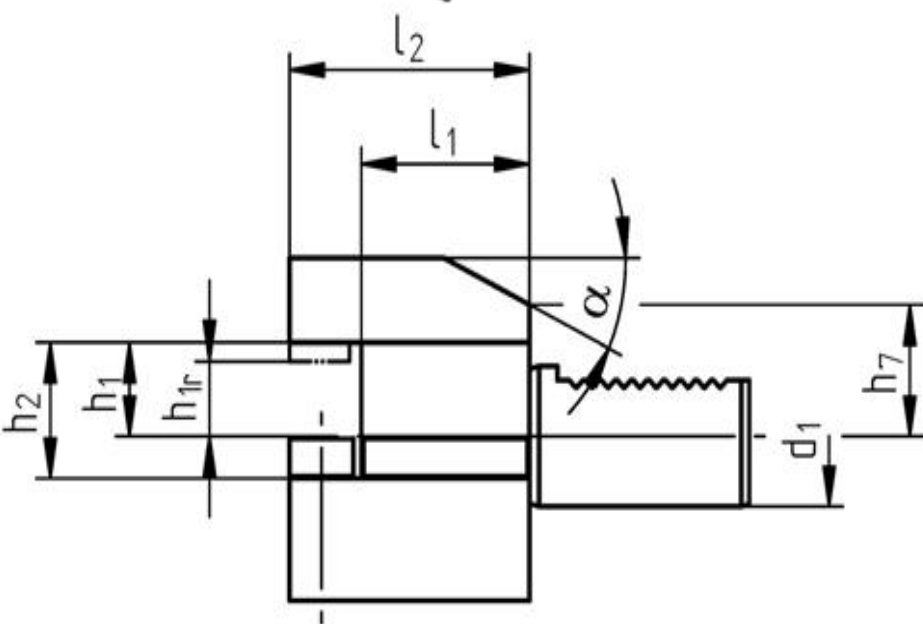
订单号 Order No.	d1	b4	b5	b6	h1	h2	h3	h4	h6	h7	h9	l1	l2	l3	α
C4-16X12	16	43	24	13	12	17	15	15	22	20	19	44	5	20	30°
C4-20X16/55	20	—	—	—	16/12	22	19	19	30	25	23	55	7	30	30°
C4-20X16/50	20	65	40	26	16/12	22	19	19	30	25	23	50	—	30	30°
C4-25X16	25	58	33	19	16/12	22	22.5	22.5	30	25	25	55	7	20	30°
C4-25X20	25	62	37	19	20/16	29	22.5	22.5	35	28	28	55	7	20	30°
C4-30X20	30	76	41	23	20/16	29	26	22	38	35	28	70	10	30	25°
C4-40X25	40	90	47.5	25.5	25/20	34	35	30	48	42.5	—	85	12.5	30	—
C4-50X32	50	105	55	30.5	32/25	41	42	35	60	50	—	100	16	40	—
C4-60X32	60	125	62.5	33	32/25	41	46	42.5	62.5	62.5	—	125	16	40	—

◇ D1型多方向刀架 TOOLHOLDER WITH MULTIPLE SEATS



订单号 Order No.	d1	b1	b2	b3	b4	h1	h2	h3	h4	h6	l1	l2	α
D1-25X16	25	33	19	33	19	16	22	25	30	25	34	48	30°
D1-30X20	30	35	17	41	23	20/16	29	28	38	30	42	60	25°
D1-40X25	40	42.5	21	47.5	25.5	25/20	34	32.5	48	—	50	72	—
D1-50X32	50	50	26	55	30.5	32/25	41	35	60	—	60	85	—
D1-60X32	60	57.5	33	57.5	33	32/25	41	42.5	62.5	—	85	110	—

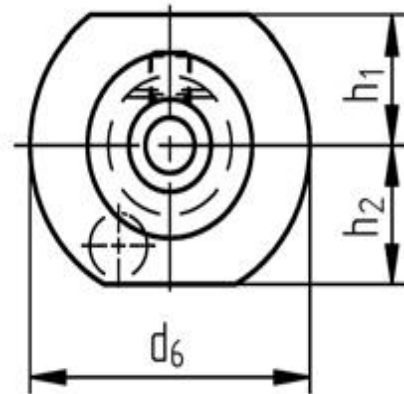
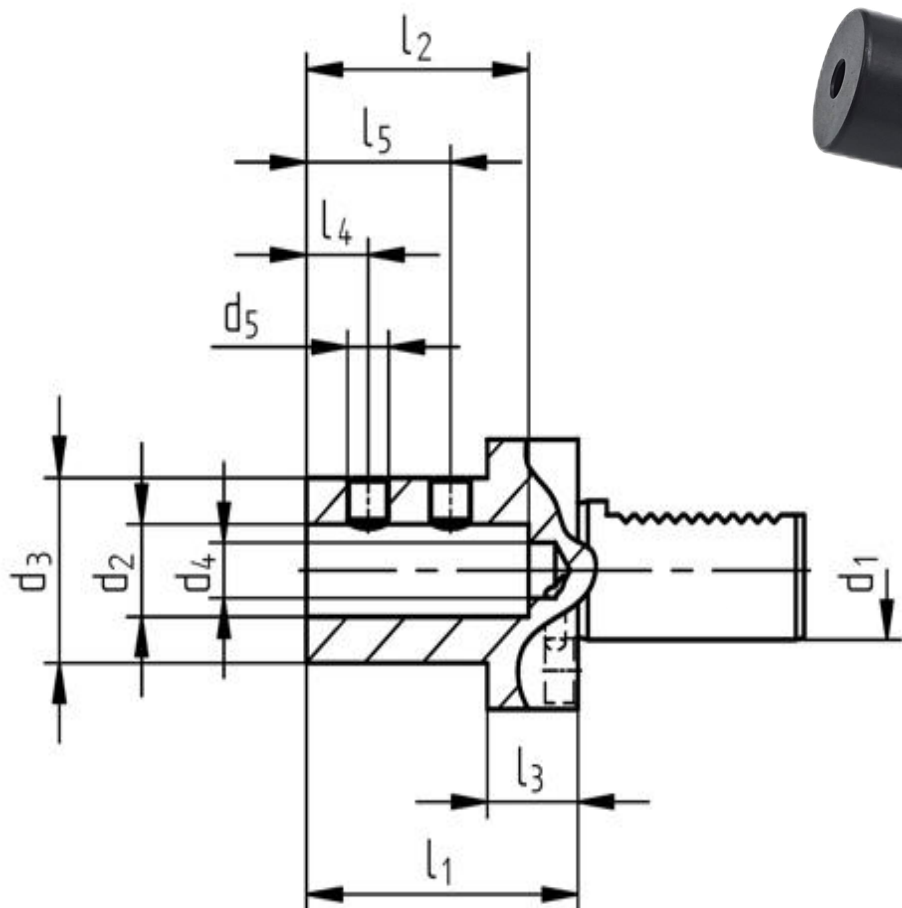
◇ D2型多方向倒置刀架 TOOLHOLDER WITH MULTIPLE SEATS UPSIDE DOWN



订单号 Order No.	d1	b1	b2	b3	b4	h1	h2	h3	h4	h6	l1	l2	α
D2-25X16	25	33	19	33	19	16	22	30	25	25	34	48	30°
D2-30X20	30	35	17	41	23	20/16	29	38	35	28	42	60	25°
D2-40X25	40	42.5	21	47.5	25.5	25/20	34	48	42.5	—	50	72	—
D2-50X32	50	50	26	55	30.5	32/25	41	60	50	—	60	85	—
D2-60X32	60	57.5	33	57.5	33	32/25	41	62.5	62.5	—	85	110	—

◇ E1型圆柱孔刀夹(钻孔)

TYPE E1 TOOL HOLDER for boring bars with cylindrical shank



订单号 Order No.	d1	d2	d3	d4	d5	d6	h1	h2	l1	l2	l3	l4	l5
E1-20X10	20	10	32	8	M8	50	--	23	67	54	18	15	35
E1-20X12	20	12	32	8	M10	50	--	23	67	54	18	15	35
E1-20X14	20	14	36	10	M10	50	--	23	67	54	22	15	35
E1-20X16	20	16	40	12	M10	50	--	23	67	54	18	15	35
E1-20X20	20	20	40	12	M10	50	--	23	67	54	18	15	35
E1-20X25	20	25	45	17	M12	50	--	23	71	59	18	17	40
E1-25X16	25	16	40	12	M10	58	25	25	67	54	18	15	35
E1-25X20	25	20	40	12	M10	58	25	25	67	54	18	15	35
E1-25X25	25	25	45	17	M12	58	25	25	71	59	18	17	40
E1-25X32	25	32	52	24	M12	58	25	25	75	63	18	17	44

◇ E1型圆柱孔刀夹(钻孔)

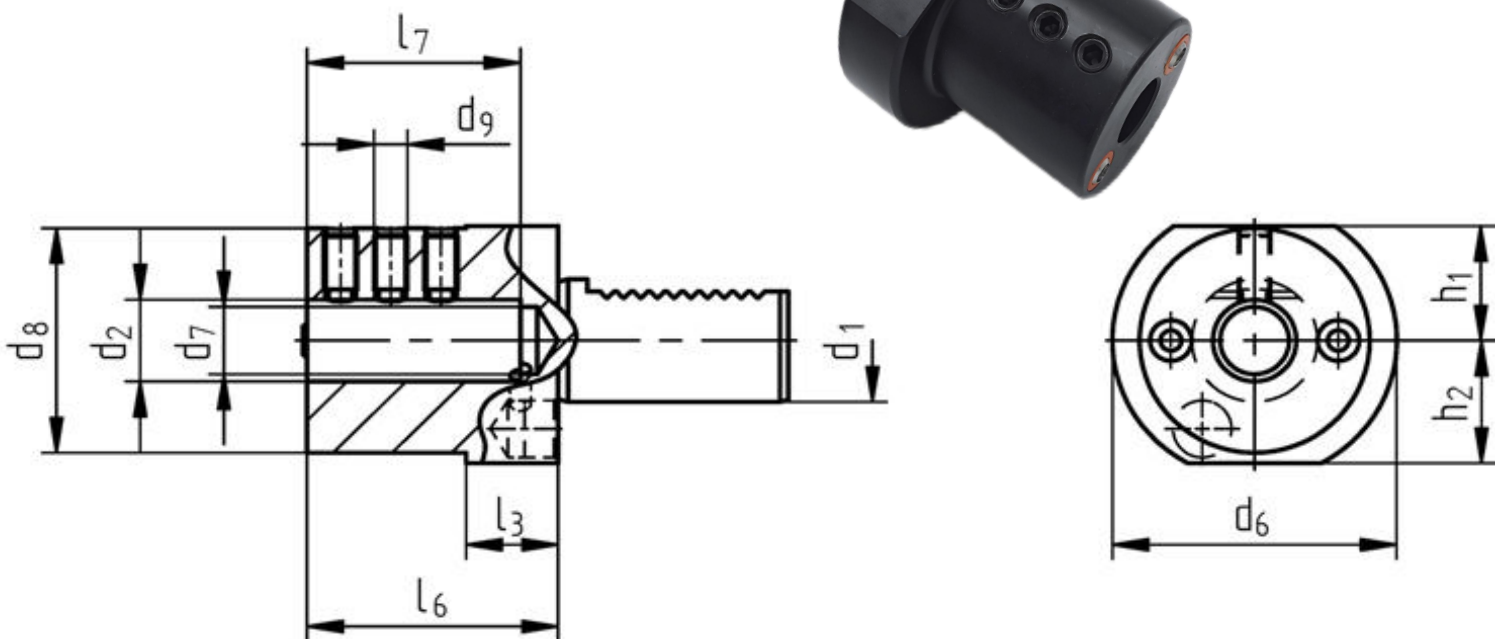
TYPE E1 TOOL HOLDER for boring bars with cylindrical shank

订单号 Order No.	d1	d2	d3	d4	d5	d6	h1	h2	l1	l2	l3	l4	l5
E1-30X10	30	10	32	8	M8	68	28	30	67	54	22	15	35
E1-30X12	30	12	32	8	M10	68	28	30	67	54	22	15	35
E1-30X14	30	14	36	10	M10	68	28	30	67	54	22	15	35
E1-30X16	30	16	40	12	M10	68	28	30	67	54	22	15	35
E1-30X20	30	20	40	12	M10	68	28	30	67	54	22	15	35
E1-30X25	30	25	45	17	M12	68	28	30	71	59	22	17	40
E1-30X32	30	32	52	24	M12	68	28	30	75	63	22	17	44
E1-30X40	30	40	65	24	M16	68	28	30	90	73	22	22	50
E1-40X10	40	10	32	8	M8	83	32.5	--	67	54	22	15	35
E1-40X12	40	12	32	8	M10	83	32.5	--	67	54	22	15	35
E1-40X14	40	14	36	10	M10	83	32.5	--	67	54	22	15	35
E1-40X16	40	16	40	12	M10	83	32.5	--	67	54	22	15	35
E1-40X18	40	18	40	12	M10	83	32.5	--	67	54	22	15	35
E1-40X20	40	20	40	12	M10	83	32.5	--	67	54	22	15	35
E1-40X25	40	25	45	17	M12	83	32.5	--	75	59	22	17	40
E1-40X32	40	32	52	24	M12	83	32.5	--	75	63	22	17	44
E1-40X40	40	40	65	25	M16	83	32.5	--	90	73	22	22	50
E1-40X50	40	50	75	32	M16	83	32.5	--	100	83	22	24	60
E1-50X10	50	10	30	8	M10	98	35	--	67	54	30	15	35
E1-50X12	50	12	32	8	M10	98	35	--	67	56	30	15	35
E1-50X16	50	16	40	12	M10	98	35	--	67	56	30	15	35
E1-50X20	50	20	40	12	M10	98	35	--	67	54	30	15	35
E1-50X25	50	25	45	17	M12	98	35	--	80	59	30	17	40
E1-50X32	50	32	52	24	M12	98	35	--	80	63	30	17	44
E1-50X40	50	40	65	32	M16	98	35	--	90	73	30	22	50
E1-50X50	50	50	75	42	M16	98	35	--	100	83	30	24	60
E1-60X20	60	20	40	12	M10	123	42.5	--	80	54	30	15	35
E1-60X25	60	25	45	17	M12	123	42.5	--	80	59	30	17	40
E1-60X32	60	32	45	24	M12	123	42.5	--	80	63	30	17	44
E1-60X40	60	40	52	32	M16	123	42.5	--	90	73	30	22	50
E1-60X50	60	50	70	42	M16	123	42.5	--	100	83	30	24	60

◇ E2型圆柱孔刀夹(铣、镗孔)

TYPE E2 TOOL HOLDER

for boring bars with cylindrical shank

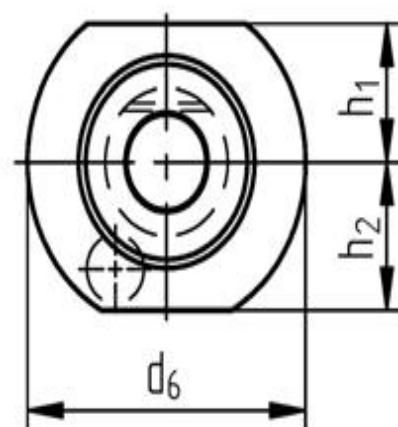
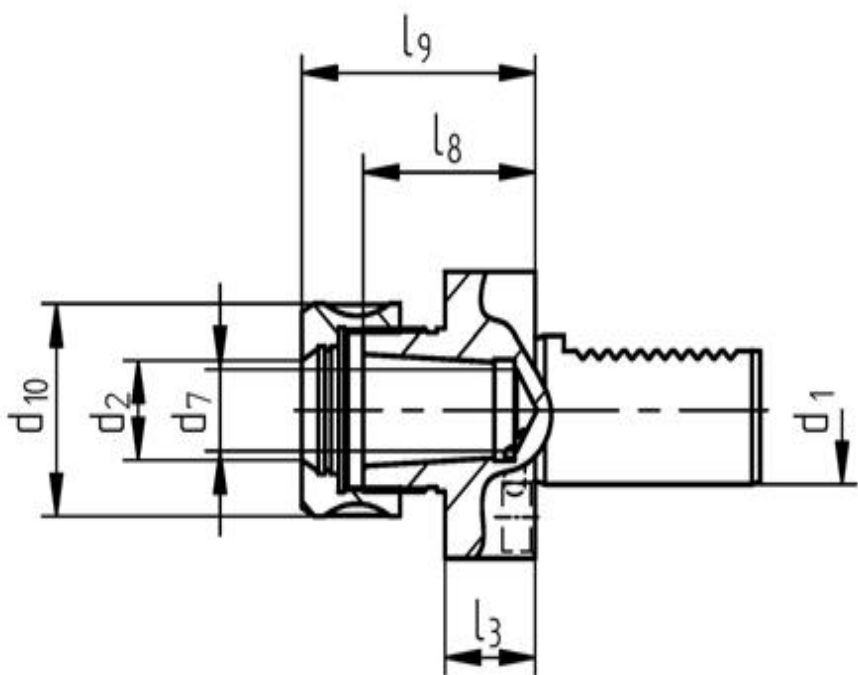


订单号 Order No.	d1	d2	d6	d7	d8	d9	h1	h2	l3	l6	l7
E2-25X6	25	6	58	5	40	M6	25	25	18	50	42
E2-25X8	25	8	58	6	40	M6	25	25	18	50	41
E2-25X10	25	10	58	8	40	M6	25	25	18	50	41
E2-25X12	25	12	58	10	40	M8	25	25	18	50	41
E2-25X14	25	14	58	10	50	M8	25	25	18	60	50
E2-25X16	25	16	58	12.5	40	M8	25	25	18	50	41
E2-25X20	25	20	58	12.5	58	M8	25	25	18	50	41
E2-25X25	25	25	58	12.5	58	M8	25	25	18	60	51
E2-30X6	30	6	68	5	55	M6	28	30	22	60	51
E2-30X8	30	8	68	6	55	M6	28	30	22	60	51
E2-30X10	30	10	68	8	55	M6	28	30	22	60	51
E2-30X12	30	12	68	10	55	M8	28	30	22	60	51
E2-30X14	30	14	68	12	55	M8	28	30	22	60	52
E2-30X16	30	16	68	12	55	M8	28	30	22	60	51
E2-30X18	30	18	68	10	55	M8	28	30	22	60	52
E2-30X20	30	20	68	16	55	M8	28	30	22	60	51
E2-30X25	30	25	68	16	55	M8	28	30	22	60	51
E2-30X32	30	32	68	16	68	M8	28	30	22	75	61

◇ E2型圆柱孔刀夹(铣、镗孔) TYPE E2 TOOL HOLDER
for boring bars with cylindrical shank

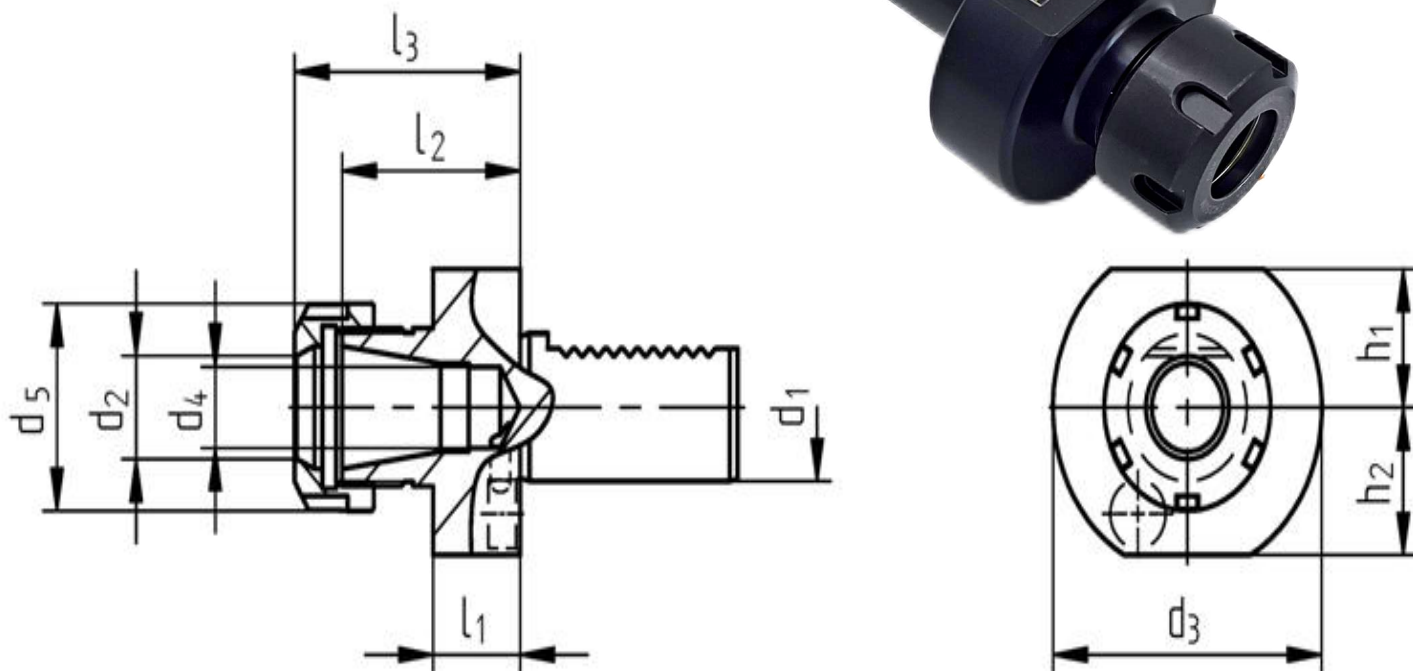
订单号 Order No.	d1	d2	d6	d7	d8	d9	h1	h2	l3	l6	l7
E2-40X6	40	6	83	5	55	M6	32.5	--	22	75	67
E2-40X8	40	8	83	6	55	M8	32.5	--	22	75	67
E2-40X10	40	10	83	8	55	M10	32.5	--	22	67	57
E2-40X12	40	12	83	10	55	M10	32.5	--	22	75	61
E2-40X14	40	14	83	10	55	M8	32.5	--	22	75	63
E2-40X16	40	16	83	12	55	M10	32.5	--	22	75	61
E2-40X18	40	18	83	10	55	M8	32.5	--	22	75	62
E2-40X20	40	20	83	16	55	M10	32.5	--	22	75	61
E2-40X25	40	25	83	20.5	55	M10	32.5	--	22	75	61
E2-40X32	40	32	83	20.5	83	M10	32.5	--	22	75	61
E2-40X40	40	40	83	20.5	83	M10	32.5	--	22	90	76
E2-40X50	40	50	83	20.5	83	M12	32.5	--	22	90	75
E2-50X8	50	8	98	6	55	M6	35	--	30	75	67
E2-50X10	50	10	98	8	55	M6	35	--	30	75	67
E2-50X12	50	12	98	10	68	M8	35	--	30	90	76
E2-50X16	50	16	98	12	68	M10	35	--	30	90	76
E2-50X20	50	20	98	16	68	M12	35	--	30	90	76
E2-50X25	50	25	98	20	68	M12	35	--	30	90	76
E2-50X32	50	32	98	25.5	68	M12	35	--	30	90	76
E2-50X40	50	40	98	25.5	98	M12	35	--	30	90	76
E2-50X50	50	50	98	25.5	98	M12	35		30	100	86
E2-60X12	60	12	123	10	68	M8	42.5		30	90	76
E2-60X16	60	16	123	12	68	M10	42.5		30	90	76
E2-60X18	60	18	123	12	55	M8	42.5		30	90	76
E2-60X20	60	20	123	16	68	M12	42.5		30	90	76
E2-60X25	60	25	123	20	68	M12	42.5	--	30	90	76
E2-60X32	60	32	123	25	68	M12	42.5	--	30	90	76
E2-60X40	60	40	123	35	98	M12	42.5	--	30	90	76
E2-60X50	60	50	123	40	98	M12	42.5	--	30	100	86

◇ E3-型DIN6388 EOC夹头刀夹 TYPE E3 COLLET HOLDER



订单号 Order No.	d1	d2 A	d2 B	d6	d7	d10	h1	h2	l3	l8	l9
E3-16XC16	16	2-16	5-15	40	6.7	43	18	--	13	36	45.5
E3-20XC16	20	2-16	5-15	50	9	43	--	23	18	42	57
E3-20XC20	20	2-20	6-20	50	9	50	--	23	18	46	62
E3-25XC16	25	2-16	5-15	58	9	43	25	25	18	42	57
E3-30XC25	30	2-25	6-25	68	16.5	60	28	30	22	59	75
E3-40XC16	40	2-16	5-15	83	20.5	43	32.5	--	22	42	57
E3-40XC25	40	2-25	6-25	83	20.5	60	32.5	--	22	59	75
E3-40XC32	40	4-32	10-32	83	20.5	72	32.5	--	22	73	90
E3-50XC25	50	2-25	6-25	98	25.5	60	35	--	30	59	75
E3-50XC32	50	4-32	10-32	98	25.5	72	35	--	30	73	90
E3-60XC32	60	4-32	10-32	123	40.5	72	42.5	--	30	73	90
E3-60XC40	60	6-29.5	30-40	123	40.5	85	42.5	--	30	82	100

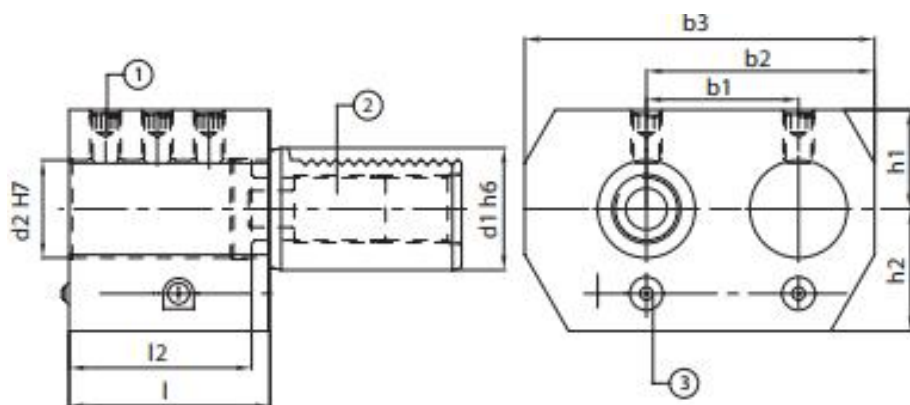
◇ E4型DIN6499 ER夹头刀夹 TYPE E4 COLLET HOLDER



订单号 Order No.	d1	d2	d3	d4	d5	h1	h2	l1	l2	l3
E4-16XER16	16	0.5-10	40	6.7	28	18	18	13	30	40
E4-16XER20	16	0.5-13	40	6.7	34	18	18	13	33	44
E4-20XER16	20	0.5-10	50	9	28	--	23	18	30	40
E4-20XER25	20	0.5-16	50	9	42	--	23	18	38	50
E4-20XER32	20	1-20	50	9	50	--	23	18	49	62
E4-25XER25	25	0.5-16	58	9	42	25	25	18	45	57
E4-25XER32	25	1-20	58	9	50	25	25	18	49	62
E4-30XER25	30	0.5-16	68	16.5	42	28	30	22	45	57
E4-30XER32	30	1-20	68	16.5	50	28	30	22	49	62
E4-30XER40	30	2-30	68	16.5	63	28	30	22	56	70
E4-40XER25	40	0.5-16	83	20.5	42	32.5	--	22	45	57
E4-40XER32	40	1-20	83	20.5	50	32.5	--	22	49.5	62
E4-40XER40	40	2-30	83	20.5	63	32.5	--	22	61	75
E4-50XER40	50	2-30	92	25.5	63	35	--	30	61	75
E4-60XER40	60	2-30	123	28.5	63	42.5	--	30	61	75

◇ E7右侧双镗孔刀架

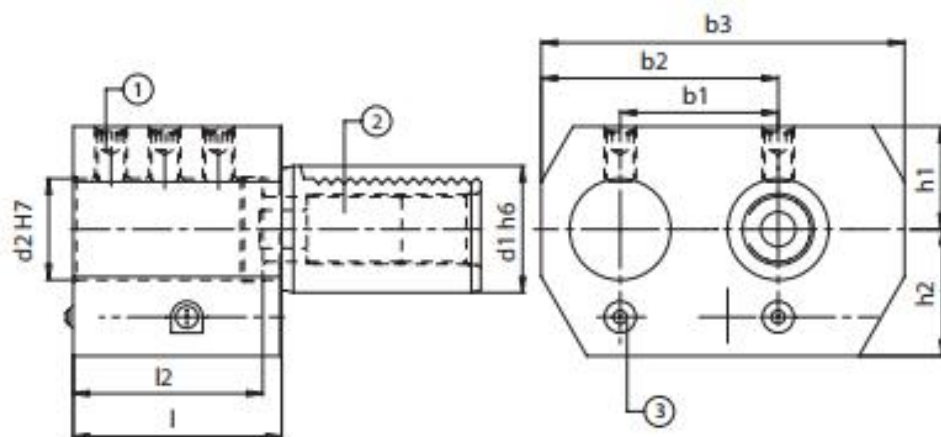
DOUBLE BORING BAR HOLDER, RIGHT



订单号 Order No.	d1	d2	h1	h2	l1	l2	b1	b2	B3	Qt
E7-30X25	30	25	28	32	56	52	45	65	95	6
E7-40X32	40	32	32.5	40	66	60	50	75	115	6
E7-50X32	50	32	32.5	47.5	66	60	50	75	115	6
E7-50X50	50	50	35	49	90	80	68	103	152	6

◇ E8左侧双镗孔刀架

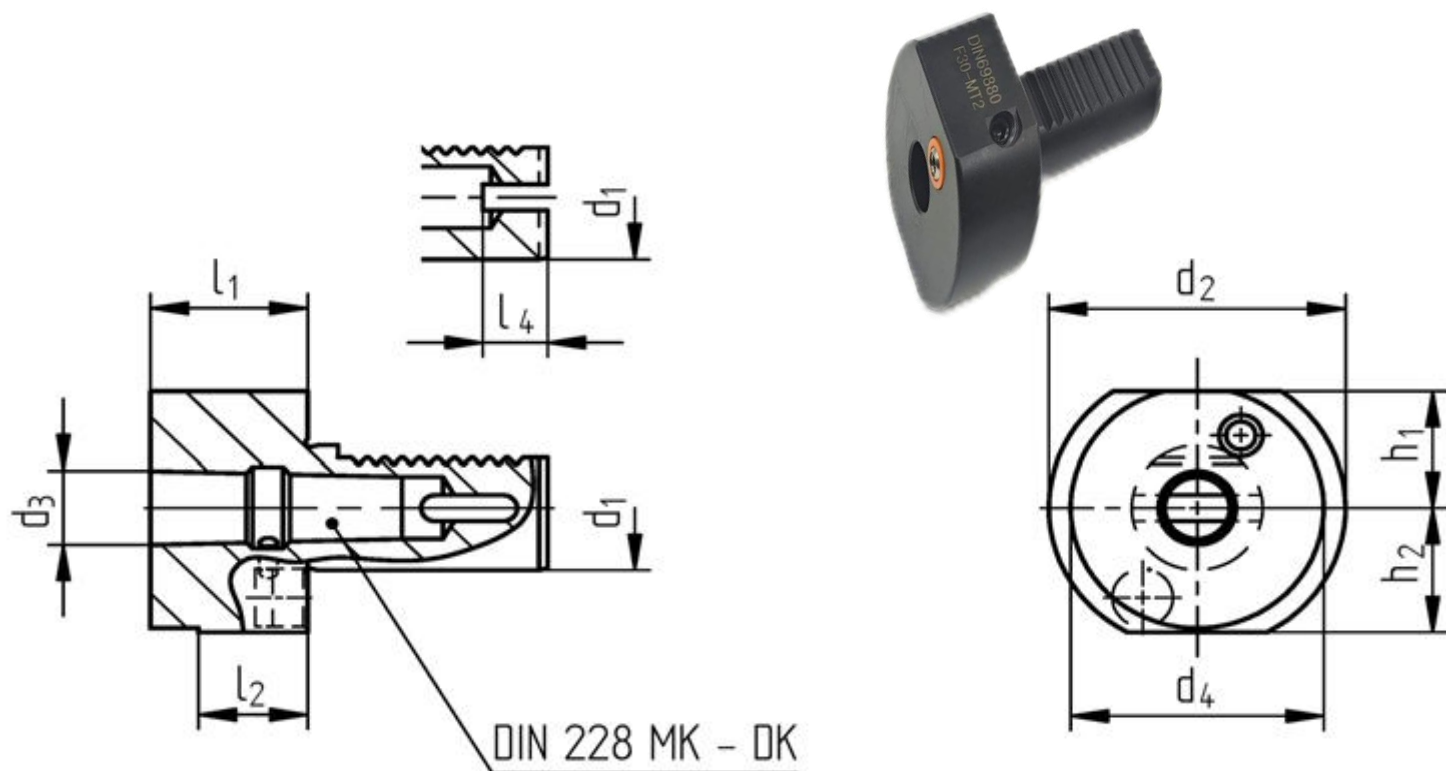
DOUBLE BORING BAR HOLDER, LEFT



订单号 Order No.	d1	d2	h1	h2	l1	l2	b1	b2	B3	Qt
E8-30X25	30	25	28	32	56	52	45	65	95	6
E8-40X32	40	32	32.5	40	66	60	50	75	115	6
E8-50X32	50	32	32.5	47.5	66	60	50	75	115	6
E8-50X50	50	50	35	49	90	80	68	103	152	6

◇ F型莫氏锥孔刀夹

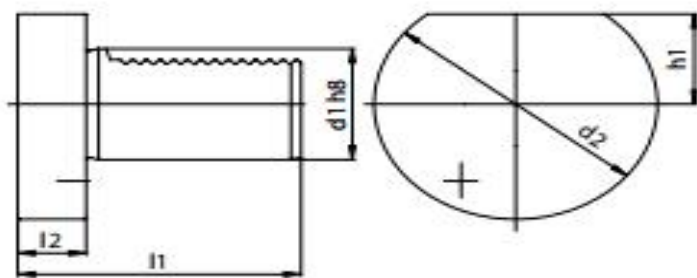
TYPE F TOOL HOLDER



订单号 Order No.	d1	d2	d3	d4	h1	h2	l1	l2	l4	MK
20-MK1	20	50	12.065	--	--	23	23	--	7	1
20-MK2	20	50	17.780	--	--	23	55	--	--	2
25-MK1	25	58	12.065	--	25	25	23	--	--	1
25-MK2	25	58	17.780	--	25	25	27	--	--	2
30-MK1	30	68	12.065	--	28	30	27	--	--	1
30-MK2	30	68	17.780	--	28	30	27	--	14	2
30-MK3	30	68	23.825	--	28	30	45	--	--	3
40-MK1	40	83	12.065	55	32.5	--	36	22	--	1
40-MK2	40	83	17.780	55	32.5	--	36	22	--	2
40-MK3	40	83	23.825	58	32.5	--	36	22	14	3
40-MK4	40	83	31.267	68	32.5	--	80	22	--	4
50-MK2	50	98	17.780	55	32.5	--	36	30	--	2
50-MK3	50	98	23.825	58	35	--	36	30	--	3
50-MK4	50	98	31.267	68	35	--	50	30	18	4
50-MK5	50	98	44.399	75	35	--	168	30	--	5
60-MK2	60	123	17.780	58	42.5	--	36	30	--	2
60-MK3	60	123	23.825	58	42.5	--	36	30	--	3
60-MK4	60	123	31.267	68	42.5	--	50	30	--	4
60-MK5	60	123	44.399	98	42.5	--	63	30	32	5

◇ Z2型保护盖

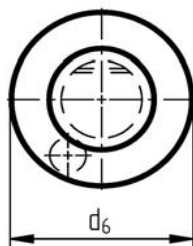
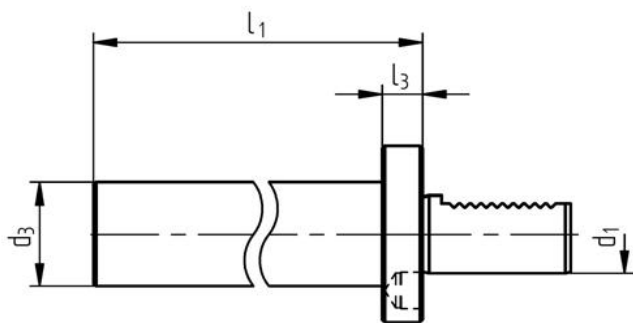
BLANKING PLUG



订单号 Order No.	d1	d2	h1	l1	l2
Z2-16S	16	40	18	45	13
Z2-20S	20	50	23	56	16
Z2-30S	30	68	28	71	16
Z2-40S	40	83	32.5	83	20
Z2-50S	50	98	35	98	20
Z2-60S	60	123	42.5	114	20

◇ 测试检测棒

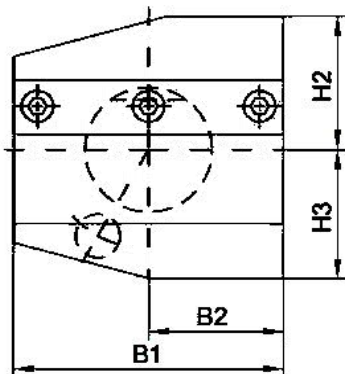
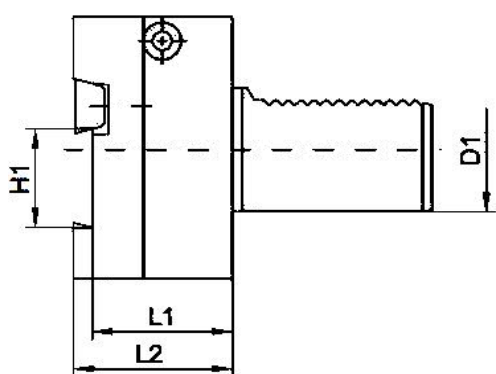
Testing Rod for Spindle



订单号 Order No.	d1	d3	d6	l1	l3
16X30X120	16	30	40	120	15
20X40X150	20	40	50	150	15
25X40X150	25	40	58	150	15
30X40X200	30	40	68	200	15
40X40X200	40	40	83	200	15
50X40X200	50	40	98	200	15
60X40X200	60	40	123	200	15

◇ AR 型切断刀架

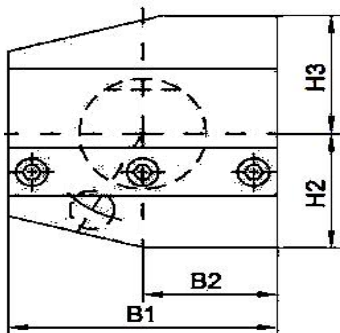
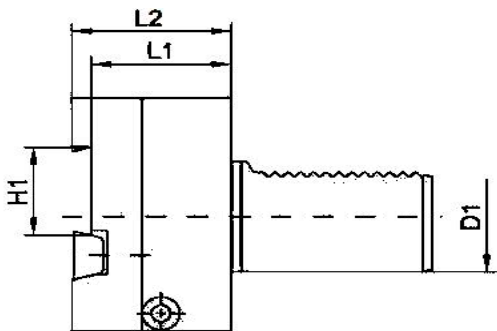
TOOLHOLDER FOR CUT OFF TOOLS
ADJUSTABLE IN HEIGHT, UPSIDE-DOWN, RIGHT



订单号 Order No.	d1	H1	B1	B2	h2	h3	l1	l2
AR-30X26	30	26	70	35	32	39	44	50
AR-40X26	40	26	85	42.5	43	41.5	44	50
AR-40X32	40	32	85	42.5	43	41.5	44	50
AR-50X26	50	26	100	50	43	45	44	50
AR-50X32	50	32	100	50	43	45	44	50
AR-60X32	60	32	125	62.5	48	55	44	50

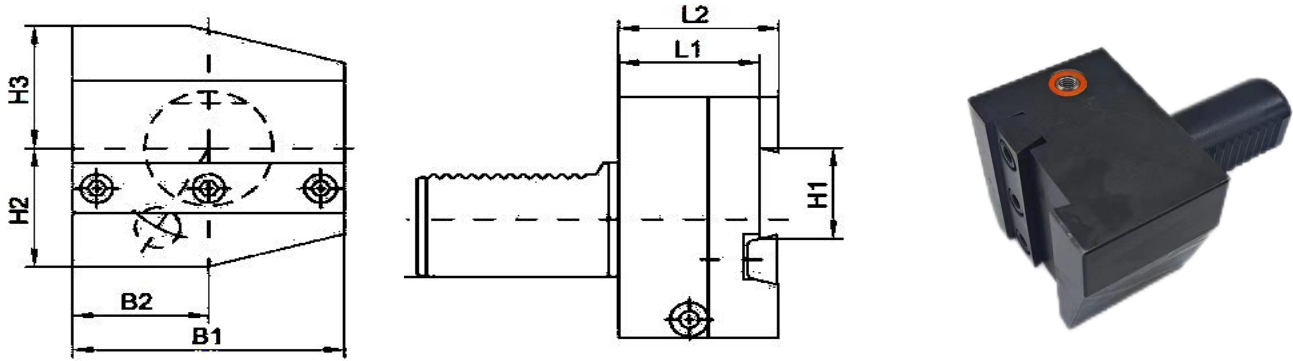
◇ ARU 型切断刀架

TOOLHOLDER FOR CUT OFF TOOLS
ADJUSTABLE IN HEIGHT, UPSIDE-DOWN, RIGHT



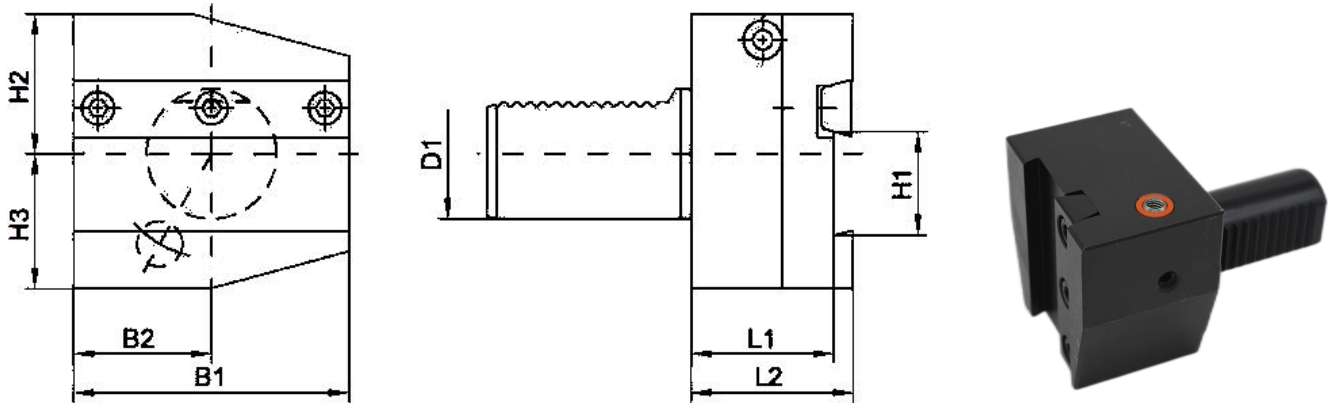
订单号 Order No.	d1	H1	B1	B2	h2	h3	l1	l2
ARU-30X26	30	26	70	35	35	38	44	50
ARU-40X26	40	26	85	42.5	41.5	43	44	50
ARU-40X32	40	32	85	42.5	41.5	43	44	50
ARU-50X26	50	26	100	50	45	43	44	50
ARU-50X32	50	32	100	50	45	43	44	50
ARU-60X32	60	32	125	62.5	55	48	44	50

◇ ALU型切断刀架 TOOLHOLDER FOR CUT OFF TOOLS
ADJUSTABLE IN HEIGHT, UPSIDE-DOWN, LEFT



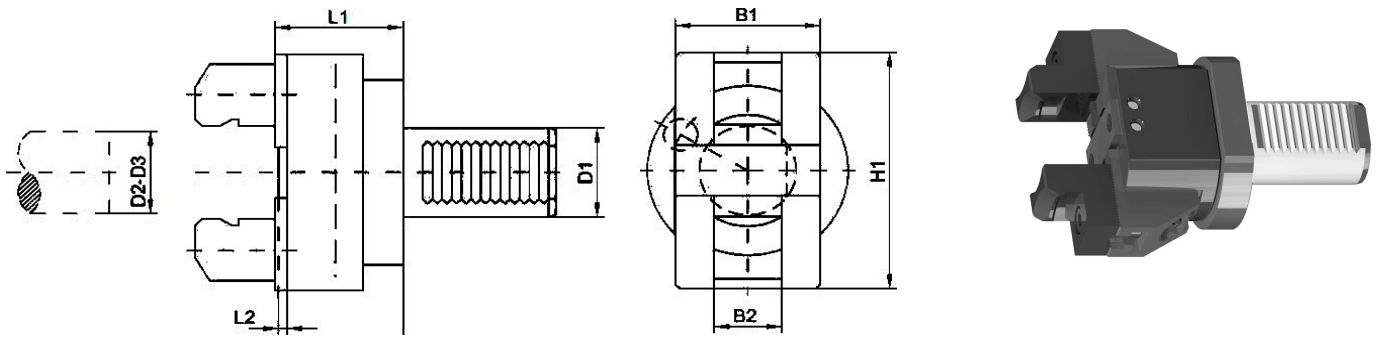
订单号Order No.	d1	H1	B1	B2	h2	h3	l1	l2
ALU-30X26	30	26	70	30	35	38	44	50
ALU-40X26	40	26	85	35	41.5	43	44	50
ALU-40X32	40	32	85	42.5	41.5	43	44	50
ALU-50X26	50	26	100	42.5	45	43	44	50
ALU-50X32	50	32	100	50	45	43	44	50
ALU-60X32	60	32	125	62.5	55	48	44	50

◇ AL型切断刀架 TOOLHOLDER FOR CUT OFF TOOLS
ADJUSTABLE IN HEIGHT, LEFT



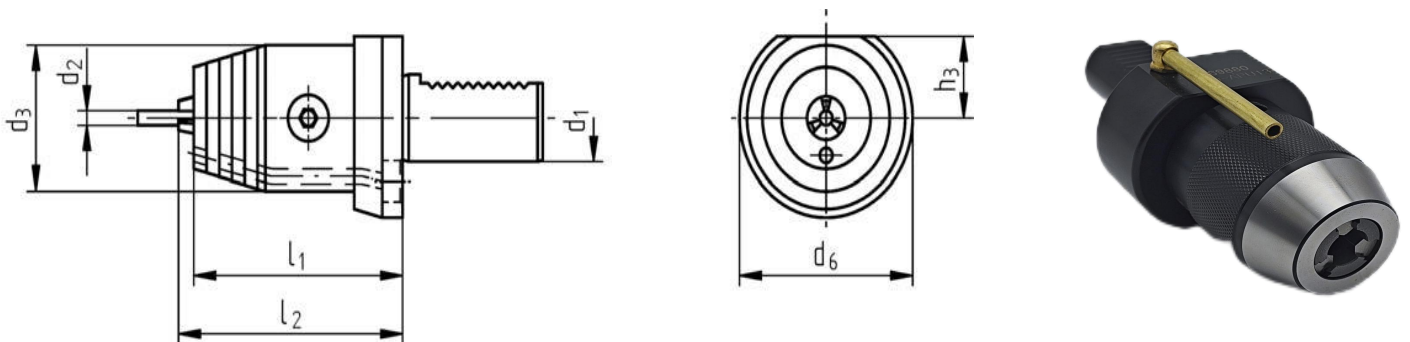
订单号 Order No.	d1	H1	B1	B2	h2	h3	l1	l2
AL-30X26	30	26	70	35	32	39	44	50
AL-40X26	40	26	85	42.5	43	41.5	44	50
AL-40X32	40	32	85	42.5	43	41.5	44	50
AL-50X26	50	26	100	50	43	45	44	50
AL-50X32	50	32	100	50	43	45	44	50
AL-60X32	60	32	125	62.5	48	55	44	50

◇ 棒材拉取器 Bar Puller



订单号 Order No.	d1	d2	d3	B1	B2	H1	L1	L2	L3
ST-20X56	20	6-56	54-100	50	28	72	51	4	46
ST-25X56	25	6-56	54-100	50	28	72	51	4	46
ST-30X56	30	6-56	54-100	50	28	72	51	4	46
ST-40X60	40	10-60	54-100	60	28	110	53	4	48
ST-50X75	50	10-75	62-125	65	28	130	73	5	67

◇ APU型钻头适配刀架 ADAPTORS FOR DRILLS WITH INTERNAL COOLANT SUPPLY



订单号 Order No.	d1	d2	d3	d6	h3	l1	l2
APU-30X13	30	1-13	57	68	28	82	88
APU-30X16	30	3-16	57	68	28	82	93
APU-40X13	40	1-13	57	83	32.5	85	91
APU-40X16	40	3-16	57	83	32.5	85	96
APU-50X13	50	1-13	57	98	35	85	91
APU-50X16	50	3-16	57	98	35	85	96

◇ 主轴拉力计

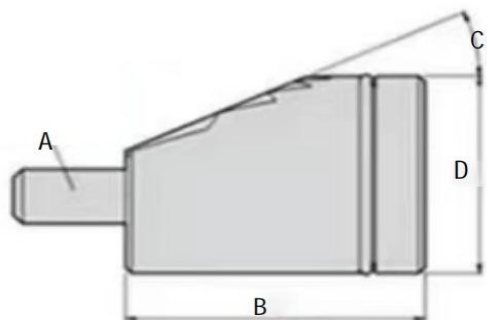
Dynamometer



主轴接口	建议Min拉力/KN	拉力计测力范围/KN
SK30/BT30	4.5	1-18
D-BT30	4.5	1-18
SK40/BT40	8.5	2-18
D-BT40	8.5	2-18
SK50/BT50	18	5-45
D-BT50	18	5-45
HSK32	5	0-18
HSK40	6.8	0-45
HSK50	11	0-45
HSK63	18	0-45
HSK80	28	0-90
HSK100	45	0-90

◇ VDI刀座锁紧销

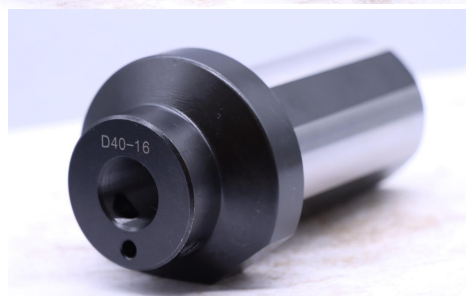
FIXING PIN



订单号 Order No.	A	B	C	D
VDI16/W-16	M5	22	20	16
VDI20/W-18	M6	28	20	18
VDI30/W-22	M8	34	20	22
VDI40/W-28	M10	42	20	28
VDI40/W-40	M10	44	20	40
VDI50/W-36	M10	48	25	36
VDI50/W-50	M12	56	25	50
VDI60/W-42	M12	54	25	42
VDI80/W-50	M16	70	25	50

◇ 马扎克刀套

MAZAK



技术负责人：王建

Head of Technology: JIAN WANG

联系方式：86+18933599744（微信同步）

Contact Information : 86+18933599744

公司地址：广东省惠州市仲恺高新区陈江街道曙光路141号
-1

网址：<http://www.hzkuho.com/>