



**浙江三门东鹰机械有限公司**

ZHEJIANG SANMEN DONGYING MACHINERY CO.,LTD



**CNC 车床和车削中心固定刀座**  
**德标 DIN 69 880**

***Tool Holder to  
DIN 69 880 For CNC Lathes***

承接各种非标产品，详细参数请登录网站  
Undertake a variety of non-standard products, detailed parameters, please visit the website

2024版  
2024 Version



## 企业概况

### 精密刀具专业制造企业

浙江三门东鹰机械有限公司（一鹰刀具）成立于2004年，是集刀具设计、研发、制造、销售和服务于一体的生产企业，已通过ISO9001-2015质量体系认证，拥有多个产品专利。

公司位于长三角经济开发区，距宁波港100公里，交通便利。公司拥有“一鹰”品牌，产品有德标DIN69880/69881数控刀座、数控立车刀座、专用刀座、CNC刀柄、各类机械配件等多个系列，公司自成立以来，视产品质量为命脉，着重人才引进和技术改造，于2008年开始在国内率先研发生产各类车削中心固定刀座，并于2016年与台湾公司共同成功开发出动力刀座，目前产品主要销往欧美等地。

## ABOUT US

### professional precision tool manufacturing enterprises

The company was founded in 2004, a professional enterprise of tools designing, researching, manufacturing, trading and service, has attained certificates of ISO9001-2015 quality system certificates, holding several patents of tools products. Company is located in economic development zone in Yangtze River Delta, about 100Km from Ningbo sea port. Convenient transportation.

Company owns “Yiying” products brand. Products include CNC tool holder according to German standard of DIN69880/69881, tools for CNC vertical lath, special tools, CNC tooling and mechanical spare parts. Since establish of company, we commit principle of quality is life line, attaches great importance to talents and technical innovation. In 2008, we begin to develop fix tool holder for all kinds of turning center in China. In 2016, we successfully designed and produced power driven tool holders. We have exported big quantity of our products to European and American countries.





# VDI刀座技术特点

## VDI Technical Information

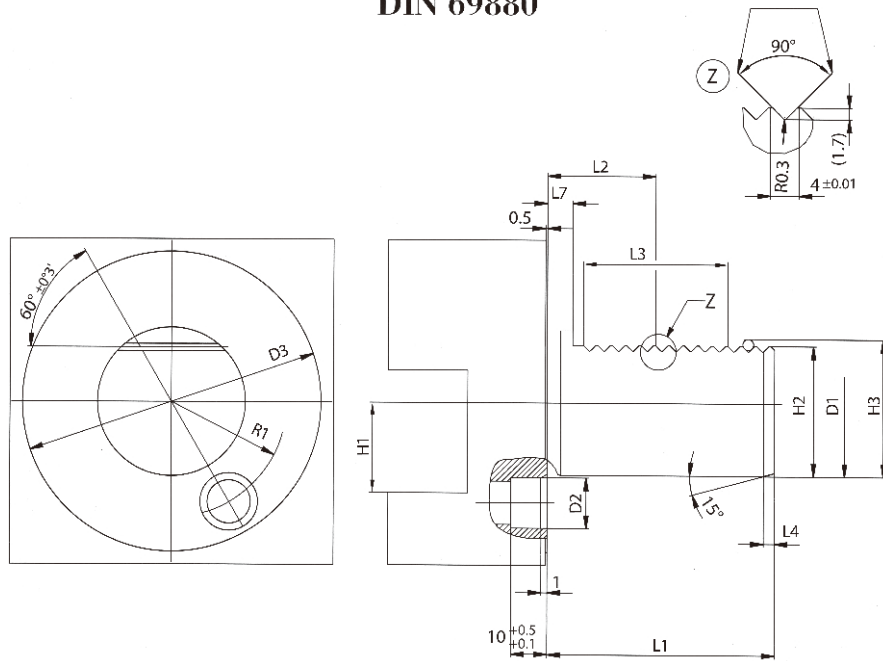
- 所有刀柄均是根据DIN69880标准制造的。
- 圆柱柄的误差-依据IT6 (H6) 等级。
- 每个刀座都进行表面硬化处理。
- 表面硬度达 $58\pm 2$  HRC。
- 核心强度超过 $1000\text{ N/mm}^2$
- 轴、锯齿面、座套面、定位孔、夹盘或定位器孔都经过磨光处理。
- 可以随时调整到下一个较低切削高度。
- 刀座中有两个定位螺丝可以调整刀具位置。
- 带弹簧压刀块可以精确夹持刀具。
- 通过可调式球形喷嘴提供内冷却液，使用新型的夹紧装置，具有快速精确的调节功能。
- 根据 *DIN 69880* 规定，刀座轴部和定位部有一个切口，可以装一个密封圈，以防冷却液渗漏。
- All toolholders are manufactured according to DIN 69880.
- Cylindrical shank's tolerance-according to the class IT6(h6)
- Each holder is fully case hardened.
- Surface hardness of  $58\pm 2$  HRc.
- Core strength in excess of  $1000\text{ N/mm}^2$
- Shaft, serration, seating face, locating bore, clamp plate or locator bore, are ground.
- Adjustable any time to the next lower cutter height.
- Position of cutter in tool holder adjustable using two stop screws.
- Spring-mounted pressure plates for clamping cutter in the exact position.
- Internal coolant supply through ball nozzles featuring quick and precise adjustment with new type of clamp fixture.
- As defined in DIN 69 880 the holders are equipped with an undercut at shaft/seating face to accomodate a sealing ring. The sealing ring is optional.



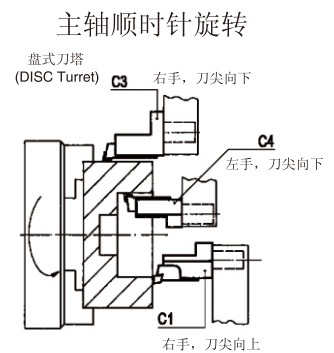
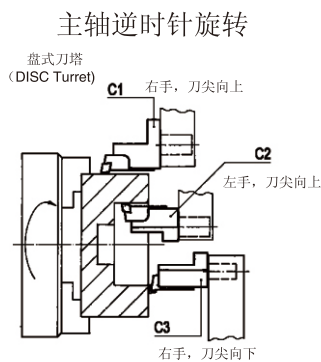
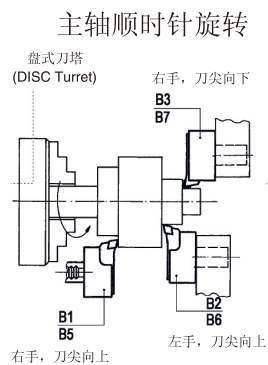
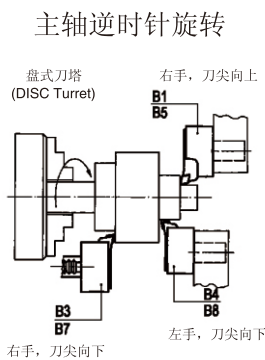
# VDI刀座技术规格

The technical specifications of VDI toolholder

## DIN 69880



D1 <sub>h6</sub>	L1 <sub>±0.3</sub>	D2	D3	H1 <sub>max.</sub>	H2 <sub>±0.1</sub>	H3 <sub>±0.1</sub>	L2 <sub>±0.05</sub>	L3 <sub>min.</sub>	L4 <sub>+1</sub>	L7	R1 <sub>±0.02</sub>
16	32	8 H6	40	12	15	16.92	12.7	16	2	3.5	14.5
20	40	10 H6	50	16	18	19.92	21.7	24	2	7	18
25	48	10 H6	58	16	23.5	25.42	21.7	24	2	7	21
30	55	14 H6	68	20	27	28.92	29.7	40	2	7	25
40	63	14 H6	83	25	36	37.92	29.7	40	3	7	32
50	78	16 H6	98	32	45	46.92	35.7	48	3	8	37
60	94	16 H6	123	32	55	56.92	43.7	56	4	10	48





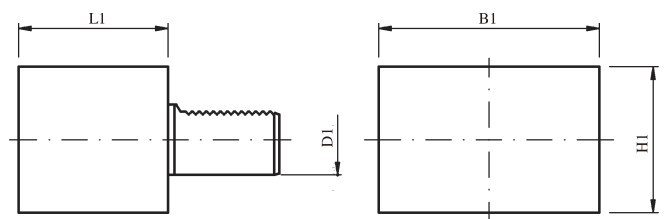


# 光刀座

Pre-machined blank (Tool holder for special design)

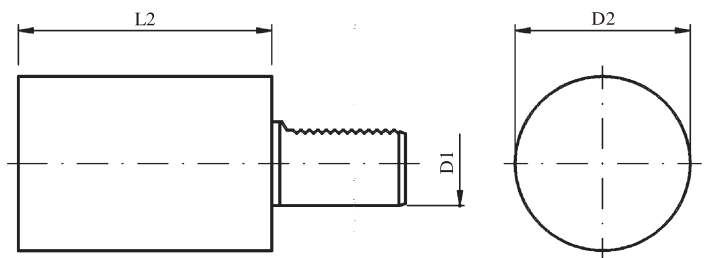
名称 DIN-Designation	D1	B1	H1	L1	N.W.Kg
A1-16x44	16	78	44	44	1.24
A1-20x65	20	100	60	65	3.11
A1-25x75	25	100	60	75	3.80
A1-30x85	30	130	75	85	6.80
A1-40x100	40	151	96	100	12.00
A1-50x125	50	160	120	125	20.00
A1-60x160	60	165	125	160	30.00

## A1 型



名称 DIN-Designation	D1	D2	L2	N.W.Kg
A2-16x60	16	40	60	0.64
A2-20x70	20	50	70	1.20
A2-25x80	25	58	80	1.77
A2-25x200	25	58	200	4.17
A2-30x100	30	68	100	3.10
A2-30x240	30	68	240	7.00
A2-40x120	40	83	120	5.63
A2-40x320	40	83	320	14.00
A2-50x135	50	98	135	9.10
A2-50x400	50	98	400	24.70
A2-60x150	60	123	150	15.20
A2-60x480	60	123	480	45.70

## A2 型



**备注/Remarks:**

特殊的尺寸可应客户要求定制

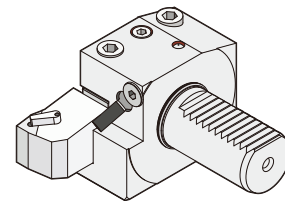
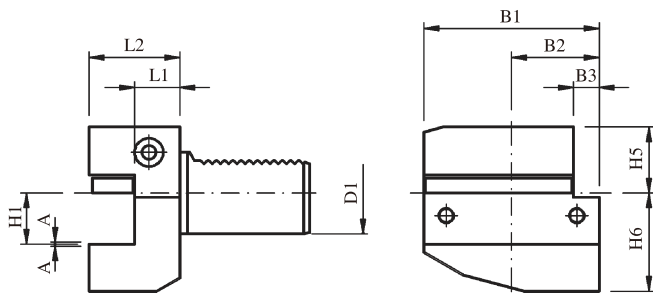


# 径向外径刀座

Rectangular transverse tool holder, right hand, short

## B1 型

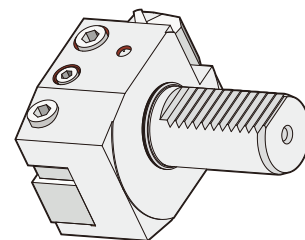
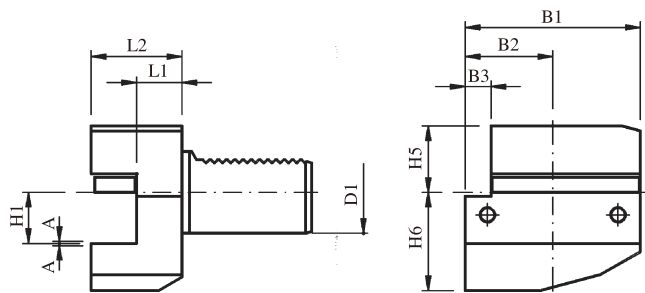
右手系，短，车刀刃向上



名称 DIN-Designation	D1	H1-0.1	B1	B2	B3	H5	H6	L1+0.5	L2	N.W.Kg
B1-16x12x24	16	12	42	23	5	20	22	13	24	0.42
B1-20x16x30	20	16	55	30	7	25	30	16	30	0.55
B1-25x16x30	25	16	55	30	7	25	30	16	30	0.68
B1-30x20x40	30	20	70	35	10	28	38	22	40	1.29
B1-40x25x44	40	25	85	42.5	12.5	32.5	48	22	44	2.28
B1-50x32x55	50	32	100	50	16	35	60	30	55	3.90
B1-60x32x60	60	32	125	62.5	16	42.5	62.5	30	60	6.41

## B2 型

左手系，短，车刀刃向上



名称 DIN-Designation	D1	H1-0.1	B1	B2	B3	H5	H6	L1+0.5	L2	N.W.Kg
B2-16x12x24	16	12	42	23	5	20	22	13	24	0.42
B2-20x12x30	20	16	55	30	7	25	30	16	30	0.55
B2-25x16x30	25	16	55	30	7	25	30	16	30	0.68
B2-30x20x40	30	20	70	35	10	28	38	22	40	1.29
B2-40x25x44	40	25	85	42.5	12.5	32.2	48	22	44	2.28
B2-50x32x55	50	32	100	50	16	35	60	30	55	3.90
B2-60x32x60	60	32	125	62.5	16	42.5	62.5	30	60	6.41

备注/Remarks:

\* 高度可调 A=1 / height adjustable / A=1

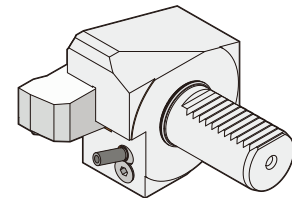
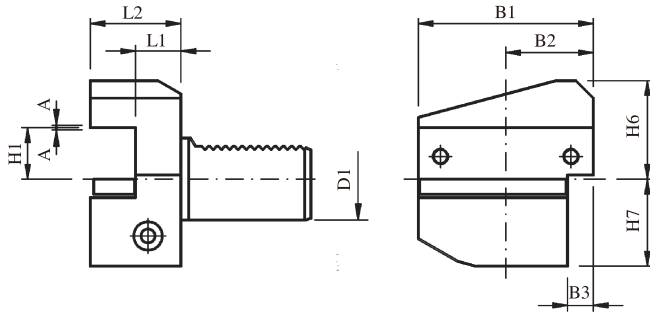


# 径向外径刀座

Rectangular transverse tool holder, overhead right hand, short

## B3 型

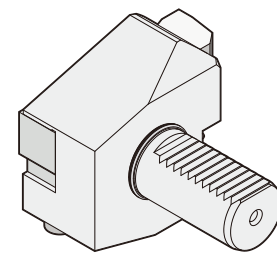
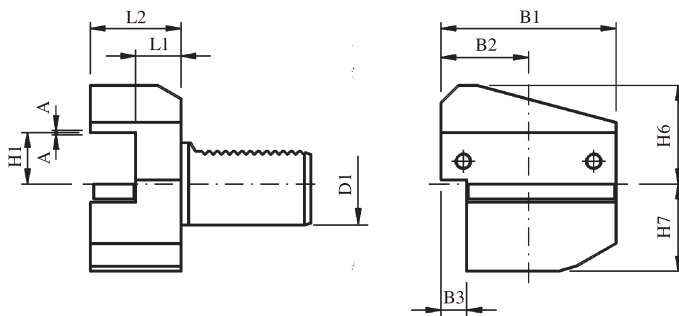
右手系，短，车刀刃向下（反向）



名称 DIN-Designation	D1	H1-0.1	B1	B2	B3	H6	H7	L1+0.5	L2	N.W.Kg
B3-16x12x24	16	12	42	23	5	22	20	13	24	0.45
B3-20x16x30	20	16	55	30	7	30	25	16	30	0.59
B3-25x16x30	25	16	55	30	7	30	25	16	30	0.71
B3-30x20x40	30	20	70	35	10	38	35	22	40	1.33
B3-40x25x44	40	25	85	42.5	12.5	48	42.5	22	44	2.34
B3-50x32x55	50	32	100	50	16	60	50	30	55	4.20
B3-60x32x60	60	32	125	62.5	16	62.5	62.5	30	60	7.11

## B4 型

左手系，短，车刀刃向下（反向）



名称 DIN-Designation	D1	H1-0.1	B1	B2	B3	H6	H7	L1+0.5	L2	N.W.Kg
B4-20x16x30	20	16	55	30	7	30	25	16	30	0.59
B4-25x16x30	25	16	55	30	7	30	25	16	30	0.71
B4-30x20x40	30	20	70	35	10	38	35	22	40	1.45
B4-40x25x44	40	25	85	42.5	12.5	48	42.5	22	44	2.51
B4-50x32x55	50	32	100	50	16	60	50	30	55	4.23
B4-60x32x60	60	32	125	62.5	16	62.5	62.5	30	60	7.41

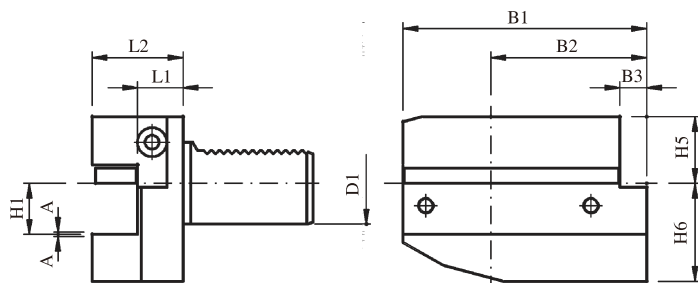
备注/Remarks:

\* 高度可调 A=1 / height adjustable / A=1



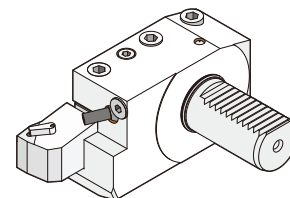
# 径向外径刀座

Rectangular transverse tool holder, right hand, long

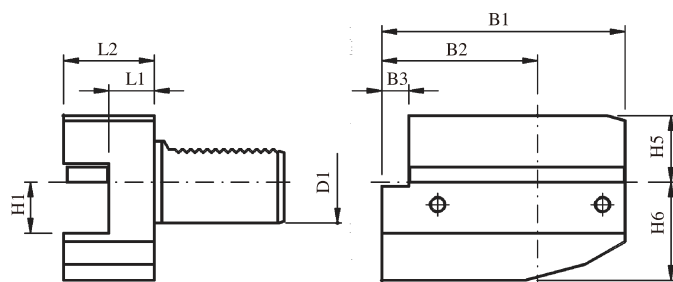


## B5 型

右手系, 长, 车刀刃向上

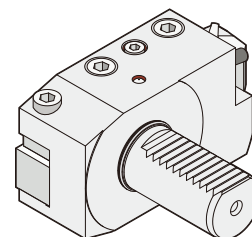


名称 DIN-Designation	D1	H1-0.1	B1	B2	B3	H5	H6	L1+0.5	L2	N.W.Kg
B5-20x16x30	20	16	75	50	7	25	30	16	30	0.72
B5-30x20x40	30	20	100	65	10	28	38	22	40	1.73
B5-40x25x44	40	25	118	75.5	12.5	32.5	48	22	44	2.88
B5-50x32x55	50	32	130	80	16	35	60	30	55	5.00
B5-60x32x60	60	32	145	82.5	16	42.5	62.5	30	60	7.14



## B6 型

左手系, 长, 车刀刃向上



名称 DIN-Designation	D1	H1-0.1	B1	B2	B3	H5	H6	L1+0.5	L2	N.W.Kg
B6-20x16x30	20	16	75	50	7	25	30	16	30	0.72
B6-30x20x40	30	20	100	65	10	28	38	22	40	1.73
B6-40x25x44	40	25	118	75.5	12.5	32.5	48	22	44	2.88
B6-50x32x55	50	32	130	80	16	35	60	30	55	5.00
B6-60x32x60	60	32	145	82.5	16	42.5	62.5	30	60	7.14

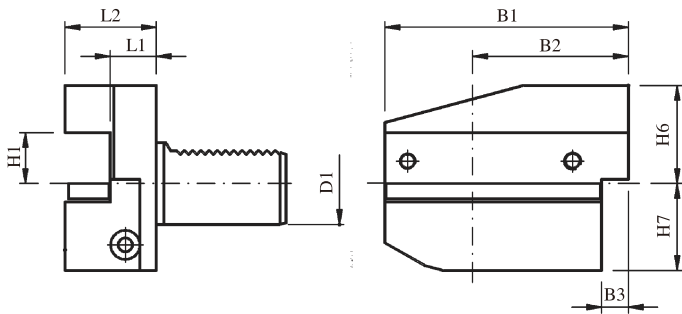
备注/Remarks:

\* 高度可调 A=1 / height adjustable / A=1



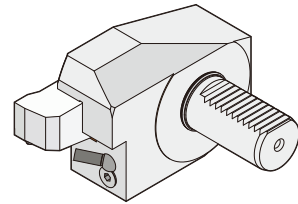
# 径向外径刀座

Rectangular transverse tool holder, overhead right hand, long

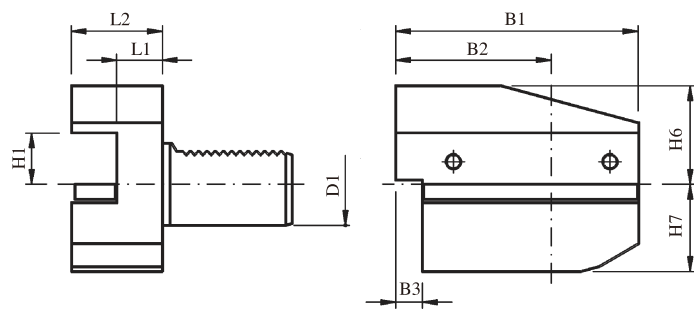


## B7 型

右手系，长，车刀刃向下（反向）

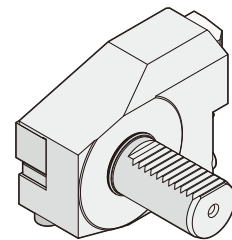


名称 DIN-Designation	D1	H1-0.1	B1	B2	B3	H6	H7	L1+0.5	L2	N.W.Kg
B7-20x16x30	20	16	75	50	7	30	25	16	30	0.80
B7-30x20x40	30	20	100	65	10	38	35	22	40	1.84
B7-40x25x44	40	25	118	75.5	12.5	48	42.5	22	44	3.16
B7-50x32x55	50	32	130	80	16	60	50	30	55	5.32
B7-60x32x60	60	32	145	82.5	16	62.5	62.5	30	60	7.50



## B8 型

左手系，长，车刀刃向下（反向）



名称 DIN-Designation	D1	H1-0.1	B1	B2	B3	H6	H7	L1+0.5	L2	N.W.Kg
B8-20x16x30	20	16	75	50	7	30	25	16	30	0.80
B8-30x20x40	30	20	100	65	10	38	35	22	40	1.84
B8-40x25x44	40	25	118	75.5	12.5	48	42.5	22	44	3.16
B8-50x32x55	50	32	130	80	16	60	50	30	55	5.32
B8-60x32x60	60	32	145	82.5	16	62.5	62.5	30	60	7.50

备注/Remarks:

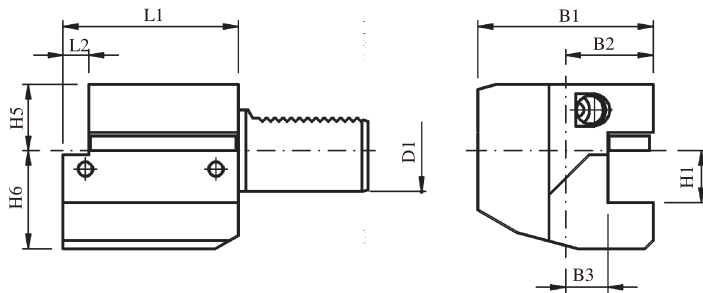
\* 高度可调 A=1 / height adjustable / A=1





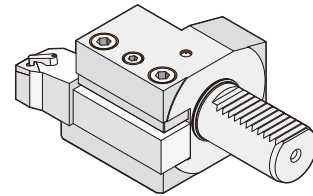
# 轴向外径刀座

Rectangular lengthwise tool holder, right hand

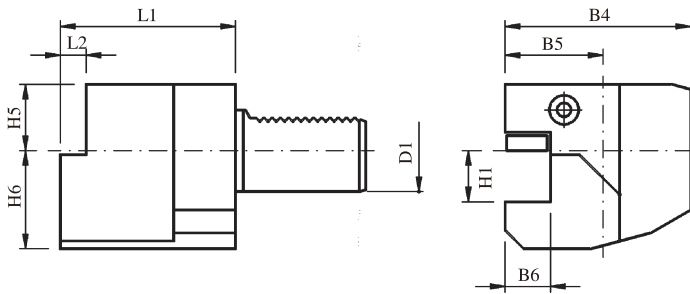


## C1 型

右手系, 车刀刃向上

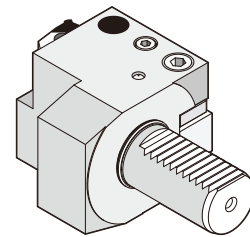


名称 DIN-Designation	D1	H1-0.1	B1	B2	B3+0.5	H5	H6	L1	L2	N.W.Kg
C1-16x12	16	12	43	24	13	20	22	44	5	0.73
C1-20x16	20	16	52	27	13	25	30	55	7	0.88
C1-25x16	25	16	58	33	19	25	30	55	7	0.91
C1-30x20	30	20	70	35	17	28	38	70	10	1.79
C1-40x25	40	25	85	42.5	20.5	32.5	48	85	12.5	3.12
C1-50x32	50	32	100	50	25.5	35	60	100	16	5.37
C1-60x32	60	32	125	62.5	32.5	42.5	62.5	125	16	9.15



## C2 型

左手系, 车刀刃向上



名称 DIN-Designation	D1	H1-0.1	B4	B5	B6+0.5	H5	H6	L1	L2	N.W.Kg
C2-20x16	20	16	65	40	26	25	30	50	-	1.12
C2-25x16	25	16	58	33	19	25	30	55	7	0.87
C2-30x20	30	20	76	41	23	28	38	70	10	1.97
C2-40x25	40	25	90	47.5	25.5	32.5	48	85	12.5	3.42
C2-50x32	50	32	105	55	30.5	35	60	100	16	5.73
C2-60x32	60	32	125	62.5	32.5	42.5	62.5	125	16	9.15

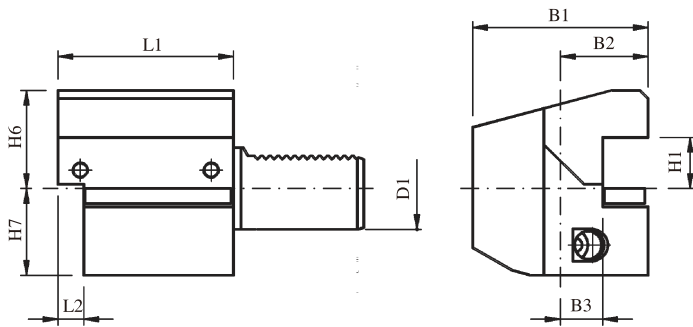
备注/Remarks:

\* 高度可调 A=1 / height adjustable / A=1



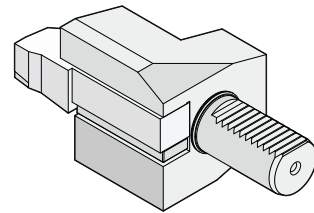
# 轴向外径刀座

Rectangular lengthwise tool holder, overhead right hand

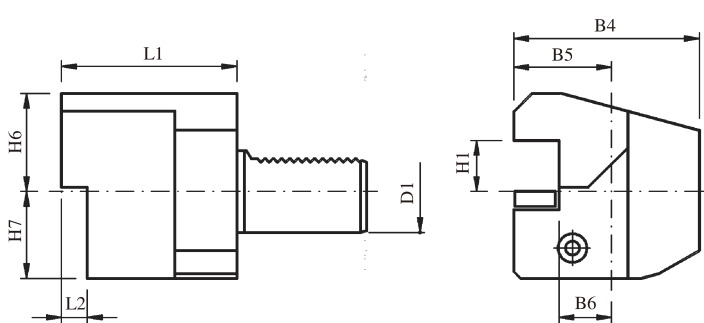


## C3 型

右手系, 车刀刃向下 (反向)

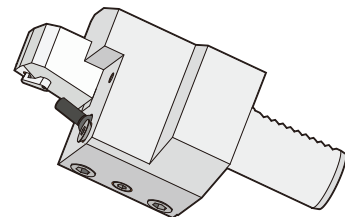


名称 DIN-Designation	D1	H1-0.1	B1	B2	B3+0.5	H5	H6	L1	L2	N.W.Kg
C3-16x12	16	12	43	24	13	22	20	44	5	0.78
C3-20x16	20	16	52	27	13	30	25	55	7	1.00
C3-25x16	25	16	58	33	19	30	25	55	7	1.04
C3-30x20	30	20	70	35	17	38	35	70	10	2.12
C3-40x25	40	25	85	42.5	20.5	48	42.5	85	12.5	3.68
C3-50x32	50	32	100	50	25.5	60	50	100	16	6.20
C3-60x32	60	32	125	62.5	32.5	62.5	62.5	125	16	10.00



## C4 型

左手系, 车刀刃向下 (反向)



名称 DIN-Designation	D1	H1-0.1	B4	B5	B6+0.5	H6	H7	L1	L2	N.W.Kg
C4-20x16	20	16	65	40	26	30	25	50	-	1.20
C4-25x16	25	16	58	33	19	30	25	55	7	1.04
C4-30x20	30	20	76	41	23	38	35	70	10	2.12
C4-40x25	40	25	90	47.5	25.5	48	42.5	85	12.5	3.68
C4-50x32	50	32	105	55	30.5	60	50	100	16	6.20
C4-60x32	60	32	125	62.5	32.5	62.5	62.5	125	16	10.00

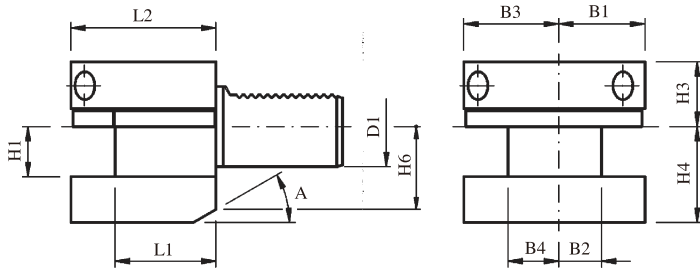
备注/Remarks:

\* 高度可调 A=1 / height adjustable / A=1

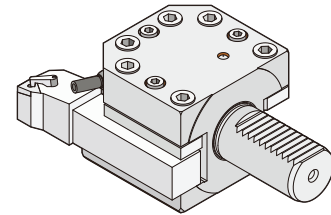


# 多装刀位外径刀座

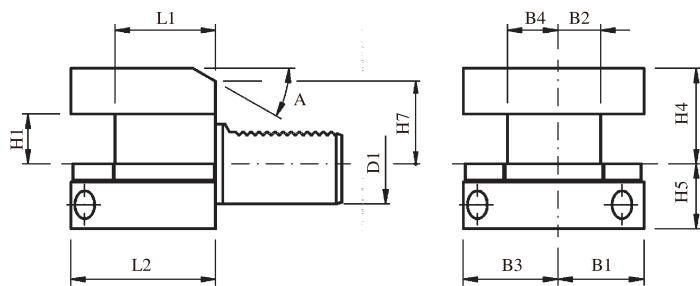
Rectangular tool holder with multiple seats



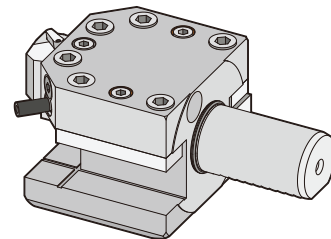
**D1 型**  
车刀刃向上



名称 DIN-Designation	D1	H1-0.1	B1	B2+0.3	B3	B4+0.3	H3	H4	H6	L1+0.5	L2	A	N.W.Kg
D1-25x16	25	16	33	19	33	19	22	30	25	34	48	30	1.28
D1-30x20	30	20	35	17	41	23	28	38	30	42	60	25	1.73
D1-40x25	40	25	42.5	20.5	47.5	25.5	32.5	48	-	50	72	-	2.30
D1-50x32	50	32	50	25.5	55	30.5	35	60	-	60	85	-	5.40
D1-60x32	60	32	57.5	32.5	57.5	32.5	42.5	62.5	-	85	110	-	7.20



**D2 型**  
车刀刃向下（反向）



名称 DIN-Designation	D1	H1-0.1	B1	B2+0.3	B3	B4+0.3	H4	H5	H7	L1+0.5	L2	A	N.W.Kg
D2-25x16	25	16	33	19	33	19	30	25	25	34	48	30	1.28
D2-30x20	30	20	35	17	41	23	38	35	28	42	60	25	1.82
D2-40x25	40	25	42.5	20.5	47.5	25.5	48	42.5	-	50	72	-	2.50
D2-50x32	50	32	50	25.5	55	30.5	60	50	-	60	85	-	6.00
D2-60x32	60	32	57.5	32.5	57.5	32.5	62.5	62.5	-	85	110	-	8.10

备注/Remarks:

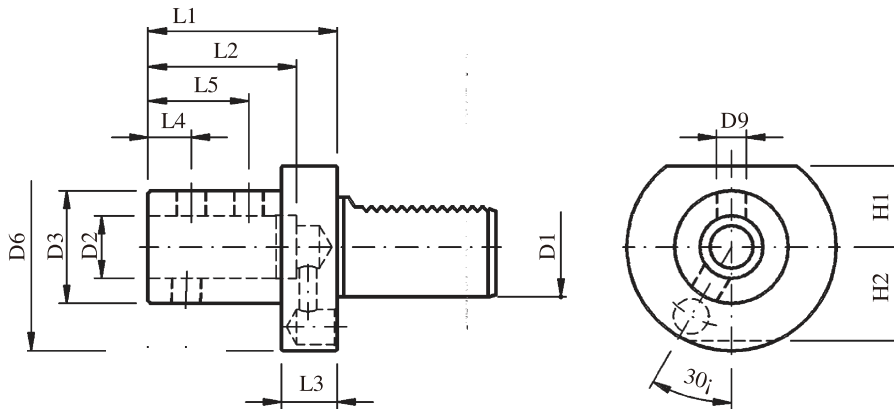
\* 高度可调 A=1 / height adjustable / A=1



# 内冷式硬质合金可转位钻削刀座

Tool holder for carbide indexable drill with internal coolant supply

## E1 型



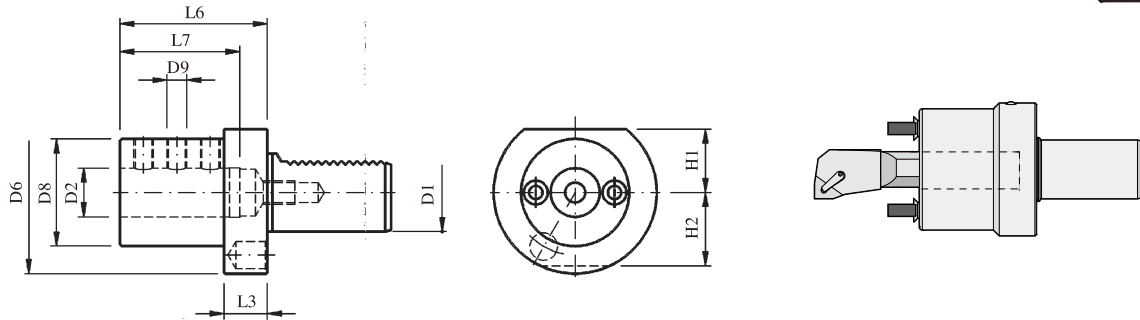
名称 DIN-Designation	D1	D2 <sub>H6</sub>	D3	D6	H1	H2	L1	L2	L3	L4	L5	D9	N.W.Kg
E1-20x16	20	16	36	50	23	23	64	51	18	17	-	M10x1	0.70
E1-20x20	20	20	40	50	23	23	67	54	18	15	35	M10x1	0.74
E1-20x25	20	25	45	50	23	23	71	59	18	17	40	M12x1	0.82
E1-25x16	25	16	36	58	25	25	67	54	18	15	35	M10x1	0.90
E1-25x20	25	20	40	58	25	25	67	54	18	15	35	M10x1	0.91
E1-25x25	25	25	45	58	25	25	71	59	18	17	40	M12x1	1.08
E1-30x16	30	16	36	68	28	30	64	51	22	17	-	M10x1	1.20
E1-30x20	30	20	40	68	28	30	67	54	22	15	35	M10x1	1.17
E1-30x25	30	25	45	68	28	30	71	59	22	17	40	M12x1	1.26
E1-30x32	30	32	52	68	28	30	75	63	22	17	44	M12x1	1.35
E1-30x40	30	40	60	68	28	30	87	73	22	22	50	M16x1.5	1.72
E1-40x16	40	16	36	83	32.5	-	64	51	22	17	-	M10x1	1.73
E1-40x20	40	20	40	83	32.5	-	67	54	22	15	35	M10x1	1.75
E1-40x25	40	25	45	83	32.5	-	75	59	22	17	40	M12x1	1.88
E1-40x32	40	32	52	83	32.5	-	75	63	22	17	44	M12x1	1.95
E1-40x40	40	40	60	83	32.5	-	90	73	22	22	50	M10x1	2.15
E1-50x20	50	20	40	98	35	-	67	54	30	15	34	M10x1	2.90
E1-50x25	50	25	45	98	35	-	80	59	30	17	40	M12x1	3.00
E1-50x32	50	32	52	98	35	-	80	63	30	17	44	M12x1	3.03
E1-50x40	50	40	60	98	35	-	90	73	30	22	50	M16x1.5	3.21
E1-50x50	50	50	70	98	35	-	100	83	30	24	60	M16x1.5	3.35
E1-60x20	60	20	40	123	42.5	-	80	54	30	15	35	M10x1	4.70
E1-60x25	60	25	45	123	42.5	-	80	59	30	17	40	M12x1	4.76
E1-60x32	60	32	52	123	42.5	-	80	63	30	17	44	M12x1	4.82
E1-60x40	60	40	60	123	42.5	-	90	73	30	22	50	M16x1.5	5.07
E1-60x50	60	50	70	123	42.5	-	100	83	30	24	60	M16x1.5	5.12



# 内冷，外冷式镗刀刀座

Boring bar holder with external and internal coolant supply

## E2 型



名称 DIN-Designation	D1	D2 <sub>H7</sub>	D6	D8	H1	H2	L3	L6	L7	D9	N.W.Kg
E2-16x6	16	6	40	32	18	18	13	44	34	M6x12	0.40
E2-16x8	16	8	40	32	18	18	13	44	34	M6x12	0.41
E2-16x10	16	10	40	32	18	18	13	44	34	M6x12	0.42
E2-16x12	16	12	40	40	18	18	13	44	34	M8x12	0.43
E2-16x16	16	16	40	40	18	18	13	44	34	M8x12	0.47
E2-20x8	20	8	50	40	23	23	18	50	41	M6x16	0.58
E2-20x10	20	10	50	40	23	23	18	50	41	M8x16	0.63
E2-20x12	20	12	50	40	23	23	18	50	41	M8x16	0.62
E2-20x16	20	16	50	40	23	23	18	50	41	M8x12	0.59
E2-20x20	20	20	50	50	23	23	18	50	41	M8x12	0.73
E2-20x25	20	25	50	50	23	23	18	60	51	M8x10	0.78
E2-25x8	25	8	58	40	25	25	18	50	41	M6x25	0.92
E2-25x10	25	10	58	40	25	25	18	50	41	M6x25	0.97
E2-25x12	25	12	58	40	25	25	18	50	41	M8x16	0.96
E2-25x16	25	16	58	40	25	25	18	50	41	M8x16	0.93
E2-25x20	25	20	58	58	25	25	18	50	41	M8x16	1.07
E2-25x25	25	25	58	58	25	25	18	60	51	M8x16	1.12
E2-30x8	30	8	68	55	28	30	22	60	51	M8x25	1.46
E2-30x10	30	10	68	55	28	30	22	60	51	M8x25	1.44
E2-30x12	30	12	68	55	28	30	22	60	51	M8x20	1.45
E2-30x16	30	16	68	55	28	30	22	60	51	M8x20	1.39
E2-30x20	30	20	68	55	28	30	22	60	51	M8x20	1.36
E2-30x25	30	25	68	55	28	30	22	60	51	M8x16	1.33
E2-30x30	30	30	68	68	28	30	22	75	61	M8x16	1.56
E2-30x32	30	32	68	68	28	30	22	75	61	M8x16	1.88

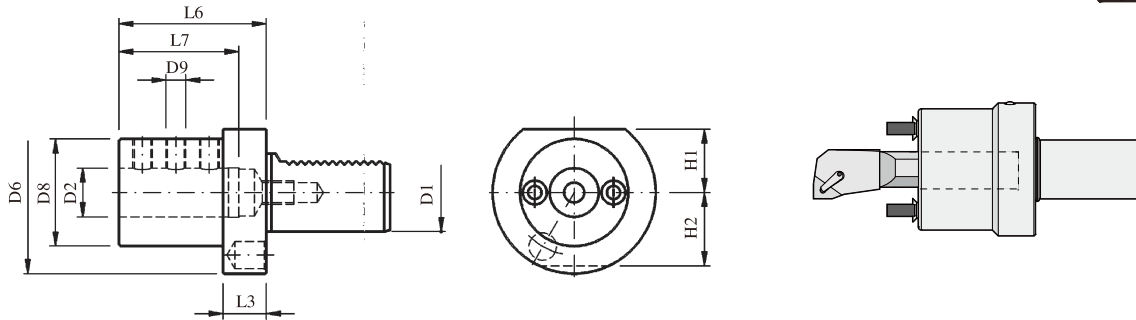




# 内冷，外冷式镗刀刀座

Boring bar holder with external and internal coolant supply

## E2 型



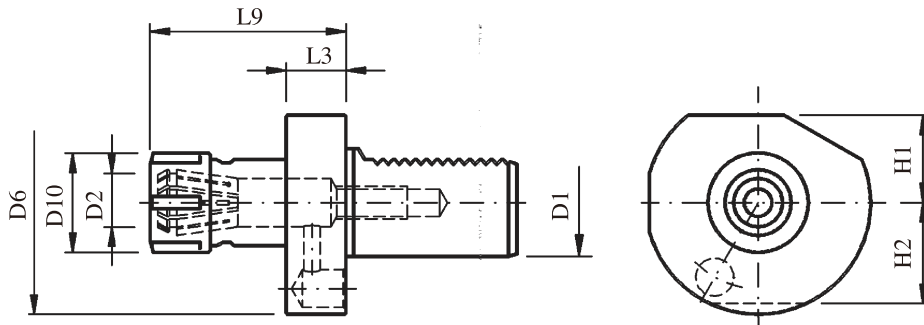
名称 DIN-Designation	D1	D2 <sub>H7</sub>	D6	D8	H1	H2	L3	L6	L7	D9	N.W.Kg
E2-40x8	40	8	83	55	32.5	-	22	75	61	M8x25	2.20
E2-40x10	40	10	83	55	32.5	-	22	75	61	M8x25	2.20
E2-40x12	40	12	83	55	32.5	-	22	75	61	M8x25	2.20
E2-40x16	40	16	83	55	32.5	-	22	75	61	M10x25	2.26
E2-40x20	40	20	83	55	32.5	-	22	75	61	M10x20	2.13
E2-40x25	40	25	83	55	32.5	-	22	75	61	M10x20	2.00
E2-40x30	40	30	83	83	32.5	-	22	75	61	M10x20	2.00
E2-40x32	40	32	83	83	32.5	-	22	75	61	M10x20	2.95
E2-40x40	40	40	83	83	32.5	-	20	90	76	M10x16	3.15
E2-50x12	50	12	98	68	35	-	30	90	76	M8x30	4.00
E2-50x16	50	16	98	68	35	-	30	90	76	M10x30	3.94
E2-50x20	50	20	98	68	35	-	30	90	76	M12x25	3.87
E2-50x25	50	25	98	68	35	-	30	90	76	M12x25	3.79
E2-50x30	50	30	98	68	35	-	30	90	76	M12x20	3.40
E2-50x32	50	32	98	68	35	-	30	90	76	M12x20	3.58
E2-50x40	50	40	98	98	35	-	30	90	76	M12x16	4.79
E2-50x50	50	50	98	98	35	-	30	100	76	M12x12	5.00
E2-60x16	60	16	123	68	42.5	-	30	90	76	M10x30	5.63
E2-60x20	60	20	123	68	42.5	-	30	90	76	M12x25	5.56
E2-60x25	60	25	123	68	42.5	-	30	90	76	M12x25	5.46
E2-60x30	60	30	123	68	42.5	-	30	90	76	M12x20	5.50
E2-60x32	60	32	123	68	42.5	-	30	90	76	M12x20	5.27
E2-60x40	60	40	123	98	42.5	-	30	90	76	M12x20	7.31
E2-60x50	60	50	123	98	42.5	-	30	100	86	M12x16	6.67



# DIN 6388 弹簧夹头 Ortlieb

Collet chuck

## E3 型



名称 DIN-Designation	D1	D2	D6	D10 max.	H1	H2	L3	L9 max.	弹簧夹 collets	N.W.Kg
E3-20x16	20	2-16	50	43	23	23	18	57	OZ 16	0.51
E3-20x20	20	2-20	50	50	23	23	18	62	OZ 20	0.68
E3-25x16	25	2-16	58	43	25	25	18	57	OZ 16	0.98
E3-30x16	30	2-16	68	43	28	30	22	57	OZ 16	1.00
E3-30x25	30	2-25	68	60	28	30	22	75	OZ 25	1.32
E3-40x25	40	2-25	83	60	32.5	-	22	75	OZ 25	1.82
E3-40x32	40	4-32	83	72	32.5	-	22	90	OZ 32	2.24
E3-50x25	50	2-25	98	60	35	-	30	75	OZ 25	2.87
E3-50x32	50	4-32	98	72	35	-	30	90	OZ 32	3.35
E3-60x32	60	4-32	123	72	42.5	-	30	90	OZ 32	5.00
E3-60x40	60	7.5-40	123	85	42.5	-	30	100	OZ 40	5.50

备注：  
冷却液通过弹簧夹供应

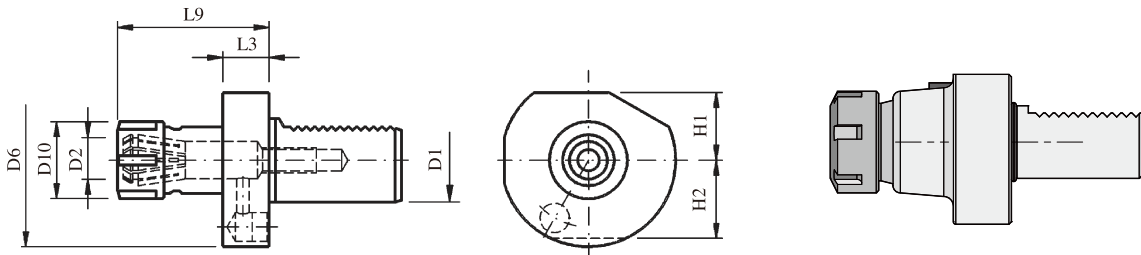
Remarks:  
Coolant supply through collet.



# DIN 6499 弹簧夹头 Schaublin

Collet chuck

## E4 型



名称 DIN-Designation	D1	D2	D6	D10 max.	H1	H2	L3	L9 max.	弹簧夹 collets	N.W.Kg
E4-16x16	16	0.5-10	40	28	18	18	14	45.5	ER 16	0.31
E4-16x20	16	1-13	40	34	18	18	14	44	ER 20	0.36
E4-20x25	20	1-16	50	42	23	23	18	57	ER 25	0.48
E4-20x32	20	2-20	50	50	23	23	18	62	ER 32	0.58
E4-25x25	25	1-16	58	42	25	25	18	57	ER 25	0.67
E4-25x32	25	2-20	58	50	25	25	18	62	ER 32	0.79
E4-30x25	30	1-16	68	42	28	30	22	57	ER 25	1.07
E4-30x32	30	2-20	68	50	28	30	22	75	ER 32	1.22
E4-40x25	40	1-16	83	42	32.5	-	22	63	ER 25	1.65
E4-40x32	40	2-20	83	50	32.5	-	22	75	ER 32	1.79
E4-40x40	40	3-26	83	63	32.5	-	22	75	ER 40	1.78
E4-50x32	50	2-20	94	50	35	-	30	75	ER 32	2.58
E4-50x40	50	3-26	94	63	35	-	30	63	ER 40	2.90
E4-60x40	60	3-26	123	63	42.5	-	30	75	ER 40	4.56

备注：  
冷却液通过弹簧夹供应

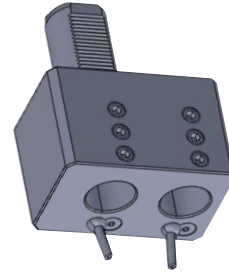
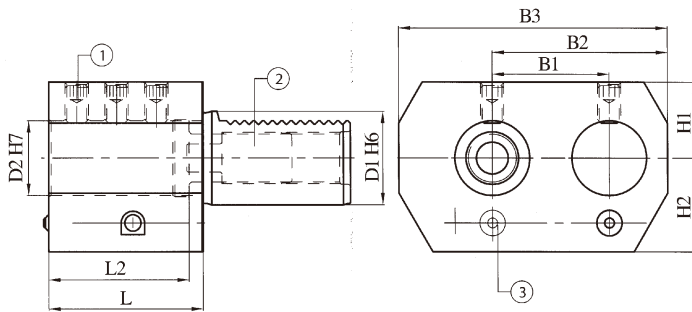
Remarks:  
Coolant supply through collet.



## 右侧双搪孔刀柄

Double boring bar holder, right

### E7 型

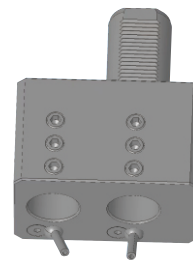
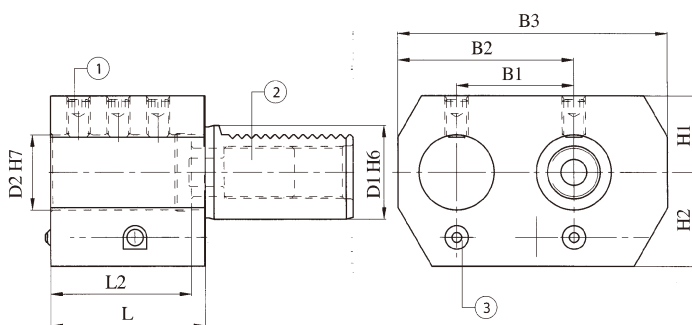


名称 DIN-Designation	D1	D2	H1	H2	L1	L2	B1	B2	B3	N.W.Kg
E7-20x16	20	16	25	25	45	42	32	51	76	1.55
E7-20x20	20	20	25	25	45	42	32	51	76	1.55
E7-30x25	30	25	28	32	56	52	45	65	95	2.05
E7-40x32	40	32	32.5	40	66	60	50	75	115	4.5
E7-50x32	50	32	32.5	47.5	66	60	50	75	115	7.5
E7-50x50	50	50	35	49	90	80	68	103	152	7.2

## 左侧双搪孔刀柄

Double boring bar holder, left

### E8 型



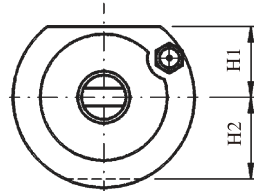
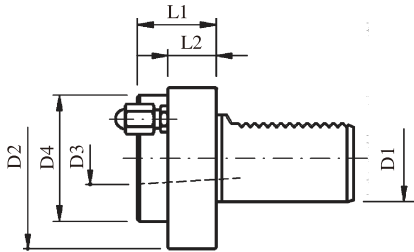
名称 DIN-Designation	D1	D2	H1	H2	L1	L2	B1	B2	B3	N.W.Kg
E8-20x16	20	16	25	25	45	42	32	51	76	1.55
E8-20x20	20	20	25	25	45	42	32	51	76	1.55
E8-30x25	30	25	28	32	56	52	45	65	95	2.05
E8-40x32	40	32	32.5	40	66	60	50	75	115	4.5
E8-50x32	50	32	32.5	47.5	66	60	50	75	115	7.5
E8-50x50	50	50	35	49	90	80	68	103	152	7.2



# 莫氏锥度刀座

Morse taper holder

F 型



名称 DIN-Designation	D1	D2	D3	D4	H1	H2	L1	L2	N.W.Kg
F-20xM1	20	50	1	-	23	23	23	-	0.43
F-20xM2	20	50	2	-	23	23	87	-	0.40
F-25xM1	25	58	1	-	25	25	23	-	0.69
F-25xM2	25	58	2	-	25	25	27	-	0.88
F-30xM1	30	68	1	-	28	30	27	-	0.94
F-30xM2	30	68	2	-	28	30	27	-	0.87
F-30xM3	30	68	3	58	28	30	55	40	1.34
F-40xM2	40	83	2	55	32.5	-	36	22	1.51
F-40xM3	40	83	3	58	32.5	-	36	22	1.47
F-40xM4	40	83	4	68	32.5	-	80	22	2.40
F-50xM2	50	98	2	55	35	-	36	30	2.61
F-50xM3	50	98	3	58	35	-	36	30	2.45
F-50xM4	50	98	4	68	35	-	50	30	2.60
F-60xM2	60	123	2	55	42.5	-	36	30	3.85
F-60xM3	60	123	3	58	42.5	-	36	30	4.21
F-60xM4	60	123	4	68	42.5	-	50	30	4.26
F-60xM5	60	123	5	98	42.5	-	63	30	4.75

备注：  
适用于采用 DIN228 BK型工具冷却的钻头

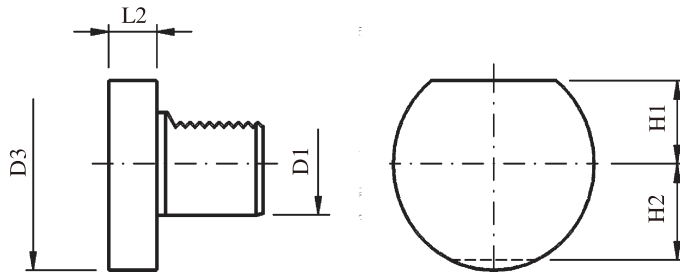
Remarks:  
For drills with coolant through the tool to DIN 228 Form BK.





## 保护塞

Blanking plug



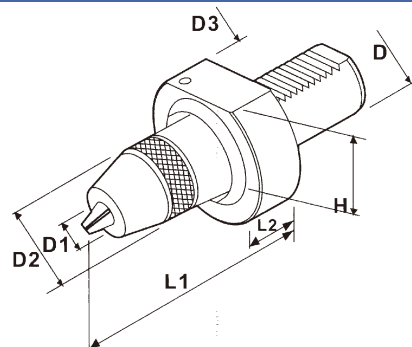
Z2 型



名称 DIN-Designation	D1	D3	H1	H2	L2	材料 material	N.W.Kg
Z2-16	16	40	18	-	13	钢 / steel	0.26
Z2-20	20	50	23	23	16	钢 / steel	0.32
Z2-25	25	58	25	25	16	钢 / steel	0.54
Z2-30	30	68	28	30	16	钢 / steel	0.69
Z2-40	40	83	32.5	-	20	钢 / steel	1.20
Z2-50	50	98	35	-	20	钢 / steel	2.19
Z2-60	60	123	42.5	-	20	钢 / steel	3.62

## 钻夹头刀座

Keyless drill chuck



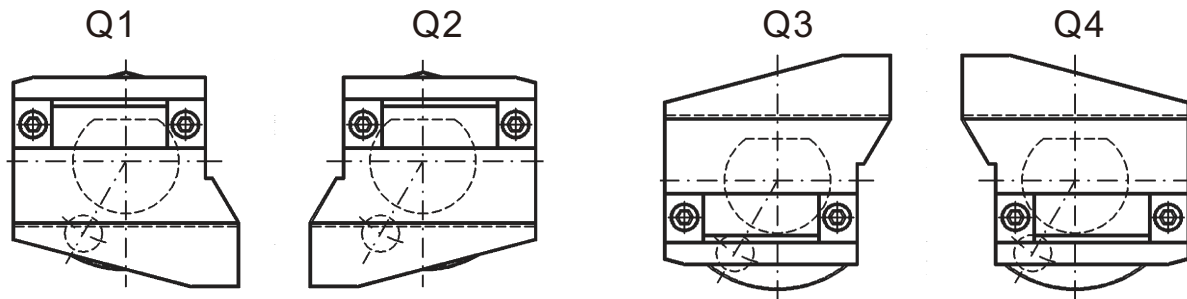
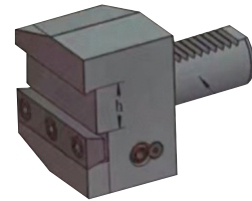
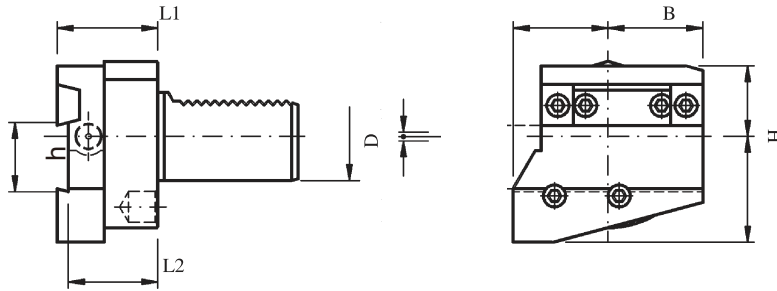
名称 DIN-Designation	D	D1	D2	D3	H	L1	L2	N.W.Kg
CHUCK-30-08	30	0.5-8	36	68	28	71	22	
CHUCK-30-13	30	1-13	51	68	28	85	22	
CHUCK-40-13	40	1-13	51	83	32.5	85	22	
CHUCK-40-16	40	1-16	57	83	32.5	102	22	
CHUCK-50-13	50	1-13	51	98	35	85	30	
CHUCK-50-16	50	1-16	57	98	35	90	30	
CHUCK-60-13	60	1-13	51	123	42.5	85	25	
CHUCK-60-16	60	1-16	57	123	42.5	90	25	



# 切断（槽）刀座

Cut-off tool holder, height adjustable

Q型



名称 DIN-Designation	D	H	h	B	L1	L2	净重 N.W.Kg
Q1-20x26	20	55	26	53	40	35	
Q1-25x26	25	55	26	53	40	35	1.07
Q1-30x26	30	64	26	70	49	44	1.52
Q1-40x26	40	75	26	85	50	44	2.68
Q1-40x32	40	85	32	85	49	44	2.57
Q1-50x26	50	80	26	100	50	44	4.59
Q1-50x32	50	80	32	100	50	44	4.46
Q1-60x32	60	103	32	125	50	44	7.54
Q2-25x26	25	64	26	60	50	44	1.07
Q2-30x26	30	66	26	70	49	44	1.52
Q2-40x26	40	75	26	85	50	44	2.68
Q2-40x32	40	80	32	85	49	44	2.57
Q2-50x26	50	80	26	100	50	44	4.59
Q2-50x32	50	80	32	100	50	44	4.46
Q2-60x32	60	103	32	125	50	44	7.54

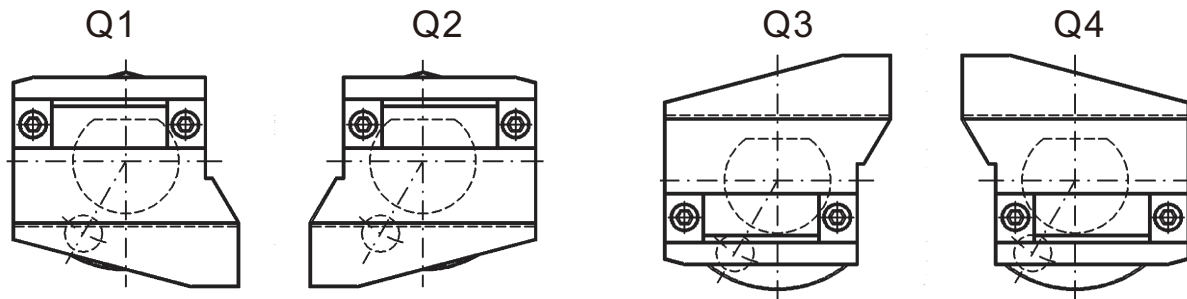
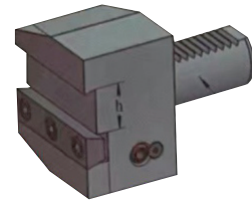
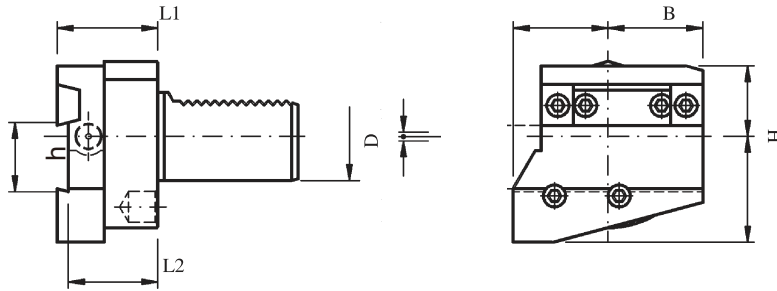
注：特殊规格尺寸可以定做  
Special dimensions on requirement



# 切断（槽）刀座

Cut-off tool holder, height adjustable

Q型



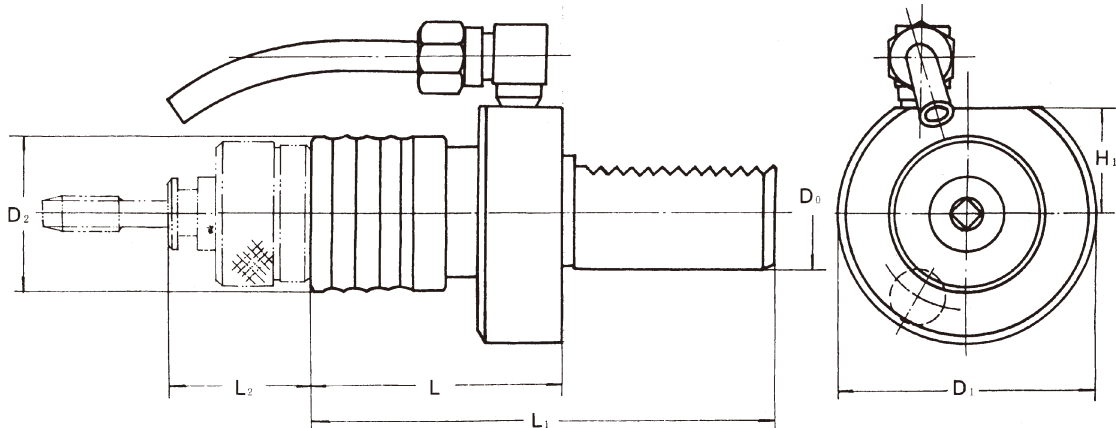
名称 DIN-Designation	D	H	h	B	L1	L2	净重 N.W.Kg
Q3-20x26	20	55	26	53	40	35	
Q3-25x26	25	55	26	53	40	35	1.07
Q3-30x26	30	83	26	70	49	44	1.52
Q3-40x26	40	75	26	85	50	44	2.68
Q3-40x32	40	80	32	85	49	44	2.57
Q3-50x26	50	80	26	100	50	44	4.59
Q3-50x32	50	80	32	100	50	44	4.46
Q3-60x32	60	103	32	125	50	44	7.54
Q4-25x26	25	64	26	60	50	44	1.07
Q4-30x26	30	72	26	70	49	44	1.52
Q4-40x26	40	75	26	85	50	44	2.68
Q4-40x32	40	80	32	85	49	44	2.57
Q4-50x26	50	80	26	100	50	44	4.59
Q4-50x32	50	80	32	100	50	44	4.46
Q4-60x32	60	103	32	125	50	44	7.54

注：特殊规格尺寸可以定做  
Special dimensions on requirement



## 攻丝夹头刀座-带保护

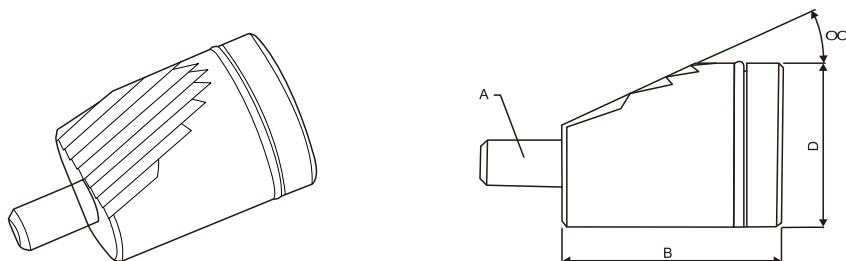
Tapping toolholders



名称 DIN-Designation	攻丝范围 Tapping range	D <sub>0</sub>	D <sub>1</sub>	D <sub>2</sub>	H <sub>1</sub>	L	L <sub>1</sub>	L <sub>2</sub>	配用攻丝夹套 Tap Collets
VDI30-G3	M3~M12	30	68	40	28	65	120	37	G3-3,4,5,6,8,10,12
VDI40-G3	M3~M12	40	83	40	32.5	65	128	37	G3-3,4,5,6,8,10,12
VDI50-G3	M3~M12	50	98	40	35	65	143	37	G3-3,4,5,6,8,10,12
VDI30-G12	M12~M24	30	68	56	28	86	141	54	G12-12,14,16,18,20,22,24
VDI40-G12	M12~M24	40	83	56	32.5	86	149	54	G12-12,14,16,18,20,22,24
VDI50-G12	M12~M24	50	98	56	35	86	164	54	G12-12,14,16,18,20,22,24
VDI40-G24	M24~M48	40	83	82	32.5	130	193	46	G24-24,27,30,33,36,39,42,45,48
VDI50-G24	M24~M48	50	98	82	32	125	203	46	G24-24,27,30,33,36,39,42,45,48
VDI60-G24	M24~M48	60	123	82	-	-	-	-	G24-24,27,30,33,36,39,42,45,48

## 压紧块

VDI WEDGE

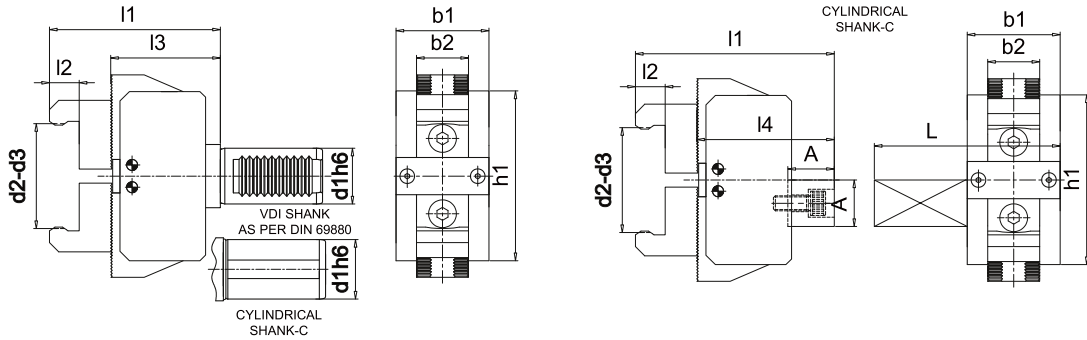


名称 DIN-Designation	A	B	OC	D
VDI20/W-20	M6	25	20°	20
VDI30/W-22	M8	34	20°	22
VDI40/W-28	M10	42	20°	28
VDI50/W-50	M12	56	25°	50



# 棒料牵引刀座

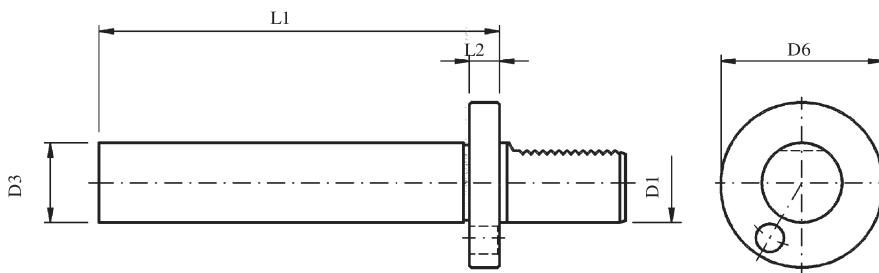
Bar puller



名称 DIN-Designation	d1	短 d2 SHORT JAWS	长 d3 LONG JAWS	b1	b2	h1	l1	l2	l3	l4	L	N.W.Kg
BP 20	20	6-60	54-110	50	28	72	84	16	51	-	-	
BP 25	25	8-60	54-110	50	28	72	84	16	51	-	-	
BP 30	30	6-60	54-110	50	28	72	92	16	59	-	-	2.00
BP 40	40	6-66	54-110	60	28	110	94	16	61	-	-	4.00
BP 50	50	6-75	60-125	65	28	130	114	16	81	-	-	
BP 60	60	6-75	60-125	75	28	130	114	16	81	-	-	

# 测试棒

Test mandrel



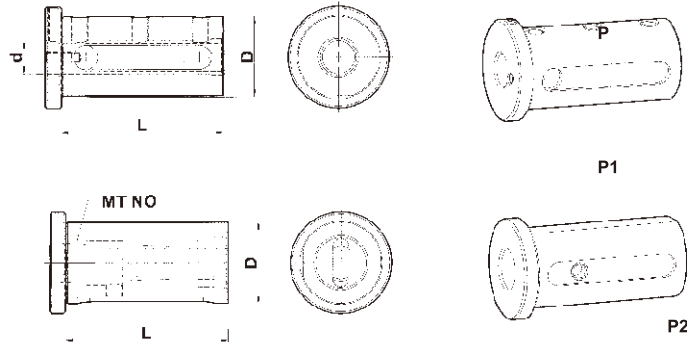
名称 DIN-Designation	D1	D3 <sub>h5</sub>	D6	L1	L2	N.W.Kg
VDI 16T	16	30	40	120	15	1.00
VDI 20T	20	40	50	150	15	1.10
VDI 25T	25	40	58	150	15	1.35
VDI 30T	30	40	68	200	15	1.70
VDI 40T	40	40	83	200	15	2.10
VDI 50T	50	40	98	200	15	2.80
VDI 60T	60	40	123	200	15	3.60





# 刀套

## Reducing sleeves

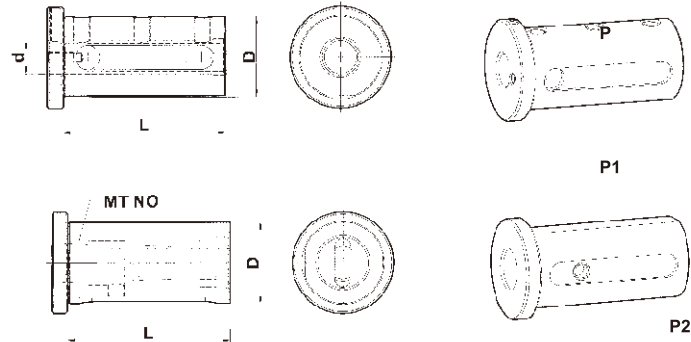


名称 DIN-Designation	D	d	L	P	MT NO	N.W.Kg
D20-6	20	6	40	P1		0.12
D20-8	20	8	40	P1		0.12
D20-10	20	10	40	P1		0.12
D20-12	20	12	40	P1		0.11
D20-16	20	16	40	P1		0.07
D25-6	25	6	50	P1		0.20
D25-8	25	8	50	P1		0.20
D25-10	25	10	50	P1		0.20
D25-12	25	12	50	P1		0.20
D25-16	25	16	50	P1		0.20
D25-20	25	20	50	P1		0.20
D25-MT1	25		50	P2	1	0.21
D25-MT2	25		60	P2	2	0.18
D32-6	32	6	60	P1		0.50
D32-8	32	8	60	P1		0.50
D32-10	32	10	60	P1		0.50
D32-12	32	12	60	P1		0.50
D32-16	32	16	60	P1		0.50
D32-20	32	20	60	P1		0.50
D32-25	32	25	60	P1		0.50
D32-MT1	32		50	P2	1	0.40
D32-MT2	32		60	P2	2	0.40
D32-MT3	32		80	P2	3	0.40
D40-8	40	8	70	P1		0.80
D40-10	40	10	70	P1		0.80
D40-12	40	12	70	P1		0.80
D40-16	40	16	70	P1		0.80
D40-20	40	20	70	P1		0.80
D40-25	40	25	70	P1		0.50
D40-32	40	32	70	P1		0.50
D40-MT1	40		50	P2	1	0.40
D40-MT2	40		60	P2	2	0.45
D40-MT3	40		80	P2	3	0.50
D40-MT4	40		100	P2	4	0.60



# 刀套

## Reducing sleeves



名称 DIN-Designation	D	d	L	P	MT NO	N.W.Kg
D50-8	50	8	85	P1		1.20
D50-10	50	10	85	P1		1.20
D50-12	50	12	85	P1		1.20
D50-16	50	16	85	P1		1.20
D50-20	50	20	85	P1		1.20
D50-25	50	25	85	P1		1.20
D50-32	50	32	85	P1		1.00
D50-40	50	40	85	P1		1.00
D50-MT1	50		50	P2	1	1.00
D50-MT2	50		60	P2	2	1.05
D50-MT3	50		80	P2	3	1.25
D50-MT4	50		100	P2	4	1.15
D60-6	60	6	105	P1		2.20
D60-8	60	8	105	P1		2.20
D60-10	60	10	105	P1		2.20
D60-12	60	12	105	P1		2.20
D60-16	60	16	105	P1		2.20
D60-20	60	20	105	P1		2.20
D60-25	60	25	105	P1		2.20
D60-32	60	32	105	P1		1.50
D60-40	60	40	105	P1		1.50
D60-50	60	50	105	P1		1.50
D60-MT1	60		105	P2	1	1.80
D60-MT2	60		105	P2	2	2.00
D60-MT3	60		105	P2	3	2.30
D60-MT4	60		105	P2	4	2.20

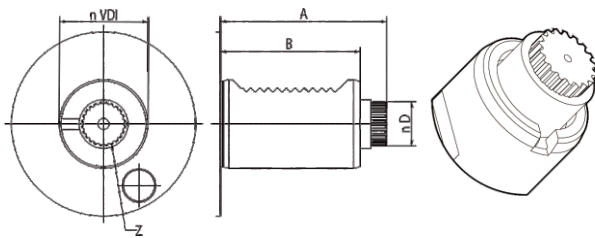


# 动力刀座联接方式

Power tool holder link mode

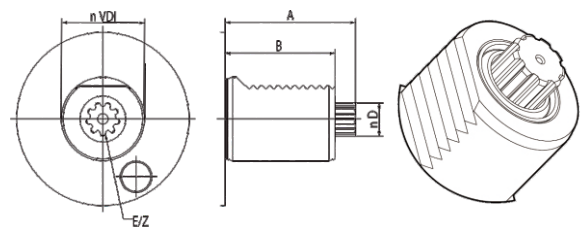
## DIN 5480(SAUTER) (DUPLOMATIC)

VDI	A	B	D	Z
30	67	55	15,8	18
40	75	63	19,8	24
50	93	78	23,8	18



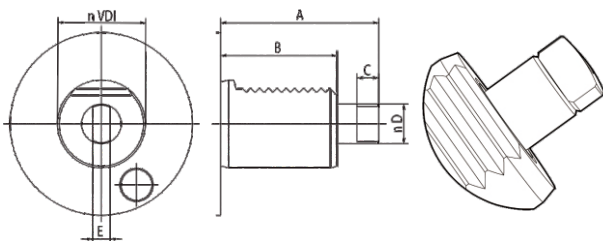
## DIN 5482(SAUTER)

VDI	A	B	D	E	Z
30	55	45	14,5	B15X12	8
40	63	53	16,5	B17X14	9
50	93	78	19,5	B20X17	11



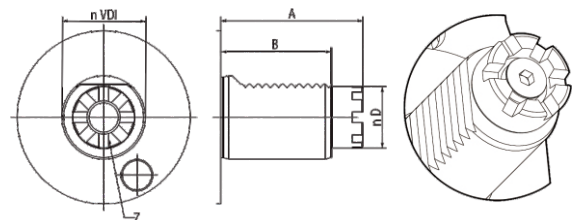
## DIN 1809(DUPLOMATIC)

VDI	A	B	C	D	E
30	62	45	8	12	6
40	72	53	10	18	8
50	91	78	13	24	13



## MT(BARUFFALDI)

VDI	A	B	D	Z
30	59	45/53	24	6
40	68	53	32	8
50	84	70	40	8





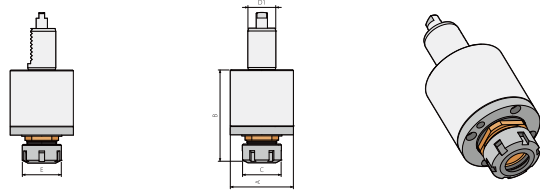
# 联接方式: DIN 5480/DIN 5482/DIN 1809/MT

Connection mode: DIN 5480/DIN 5482/DIN 1809/MT

## 轴向动力刀座 (0°)

Axial milling and drilling heads

### SA



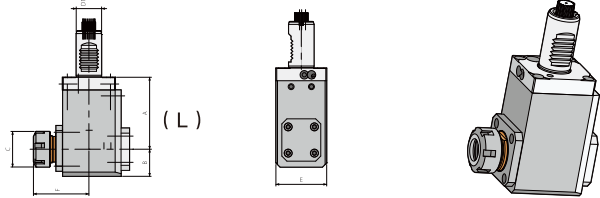
#### DIMENSIONS

Order NO.	D1	A	B	C	Maximum R.P.M	N.W.Kg
SA30-ER25	30	68	90	42	6000	2.6
SA40-ER32	40	83	90	50	6000	3.5
SA50-ER40	50	88	127	63	6000	4.9

## 径向动力刀座(90°)

RADIAL DRILLING AND MILLING HEADS

### HF<sup>L(左)</sup><sub>R(右)</sub>



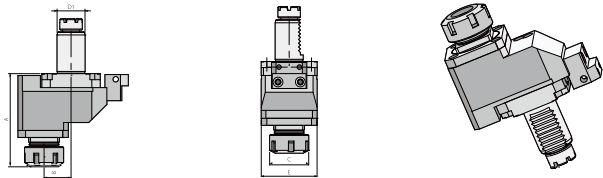
#### DIMENSIONS

OrderNO.	D1	A	B	C	E	F	Maximum R.P.M	N.W.Kg
HF <sub>R</sub> 30-ER25	30	55	32	42	60	68	4500	3.8
HF <sub>R</sub> 40-ER32	40	55	35	50	80	76	4500	5.6
HF <sub>R</sub> 50-ER40	50	85	40	63	86	90	4500	9.5

## 轴向偏心动力刀座(0°)

AXIAL DRILLING AND MILLING HEADS OFFSET

### SA<sub>OFFSET</sub>



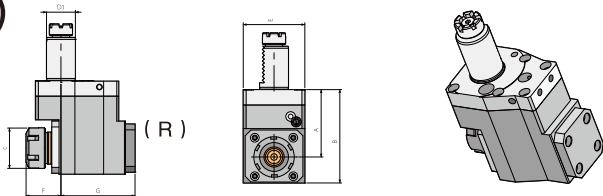
#### DIMENSIONS

Order NO.	D1	A	B	C	E	Maximum R.P.M	N.W.Kg
SA20-OFF29-ER16	20	98	29	28	52	4000	2.6
SA30-OFF29-ER25	30	98	29	42	60	4000	3.5
SA40-OFF50-ER32	40	120	50	50	80	4000	4.9

## 径向动力刀座-后缩型(90°)

RADIAL DRILLING AND MILLING HEADS OFFST

### HB<sup>L(左)</sup><sub>R(右)</sub>



#### DIMENSIONS

Order NO.	D1	A	B	C	E	F	G	Maximum R.P.M	N.W.Kg
HB30-ER25	30	70	97	42	64	32	75	5000	3.9
HB40-ER32	40	90	118	50	80	42	112	5000	8.5
HB50-ER40	50	90	128	63	86	45	112	5000	10.8



## 浙江三门东鹰机械有限公司

ZHEJIANG SANMEN DONGYING MACHINERY CO., LTD

地址：浙江三门工业园区

Add: Industri Zone, Sanmen Taizhou Zhejiang China

电话(Tel): 0576-83310638

传真(Fax): 0576-83310639

E-mail:sales@china-yiying.com

<http://www.china-yiying.com>



公众号



网站