

Republic offers a complete line of centrifugal blowers for vacuum or compressed air applications. Centrifugal blowers provide dry, clean, oil-free air and require low energy consumption. Unlike compressed air systems, this series is safe to run at low pressure, and allows for increased production speeds or levels.

The RB4002 provides the most flow of the centrifugal series. The blower comes with ceramic hybrid bearings, easy to remove bearing housing assembly, and zinc plated steel motor pulley.

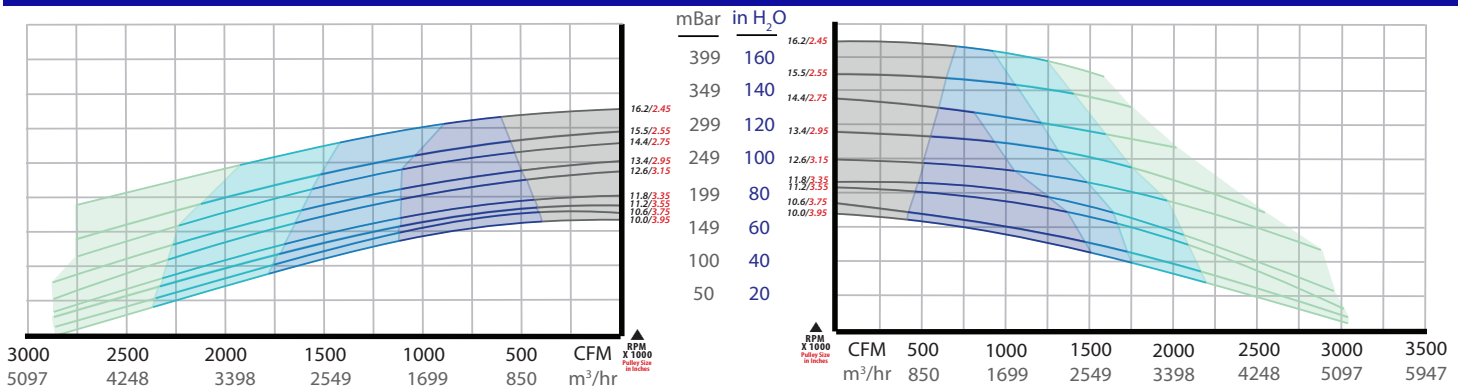


## PERFORMANCE

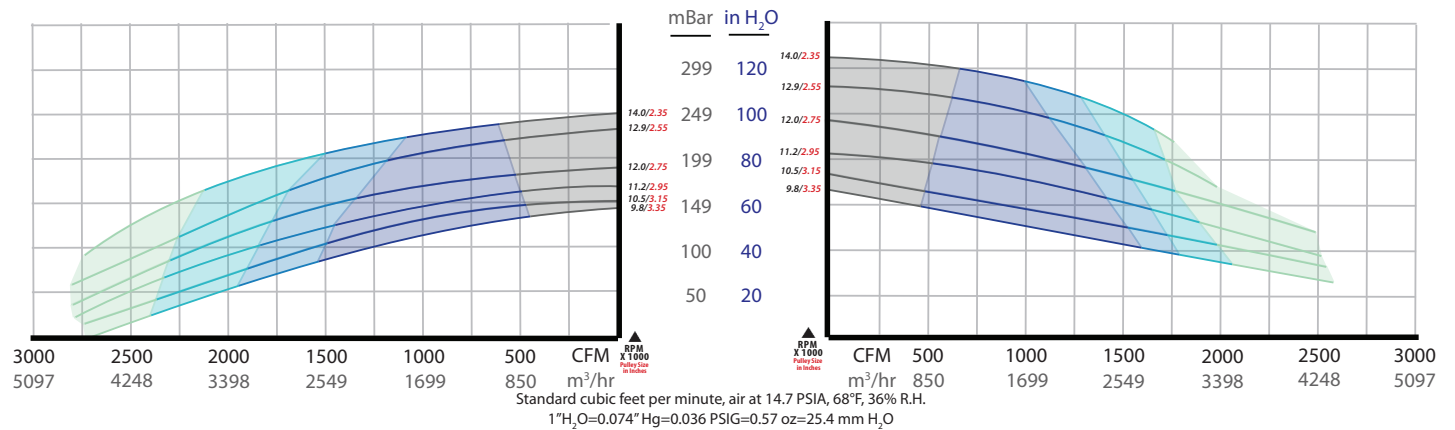
### Vacuum

### Pressure

#### 60Hz



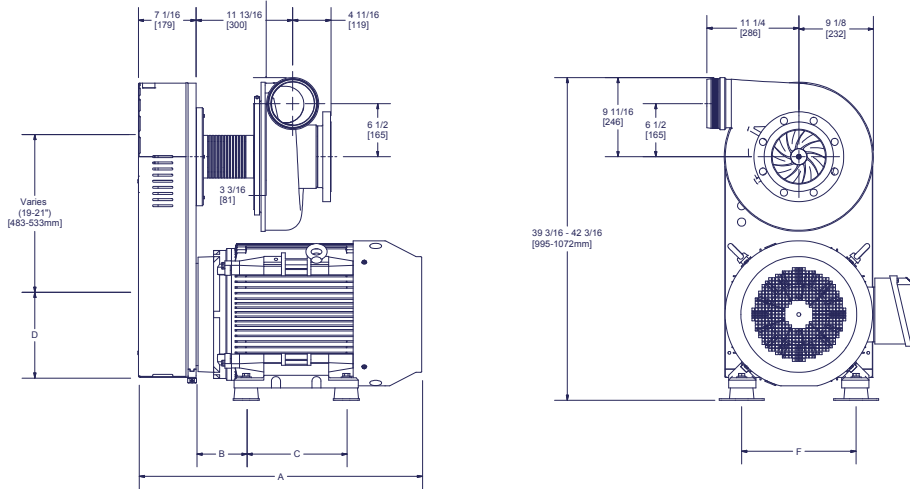
#### 50Hz



Do Not Operate 40HP 50HP 60HP 75HP

Model	Frequency (Hz)	HP	Max Flow (CFM/m <sup>3</sup> /hr)	Max Vacuum (in. H <sub>2</sub> O/mbar)	Max Pressure (in. H <sub>2</sub> O/mbar)	Sound Level (db) with Enclosure/without Enclosure	Weight (lb/kg)	Retro Kit Weight (lb/kg)
RB4002	50	40 (324TSC)	1650/2803	95/239	120/300	82/96	1,018/462	280/127
	60		1500/2549	130/324	130/324			
	50	50 (326TSC)	1950/3313	90/224	115/287	82/96	1,047/475	
	60		1800/3058	120/300	170/423			
	50	60 (365TSC)	2400/4078	85/212	110/274	82/96	1,265/574	
	60		2300/3908	110/274	165/411			
	50	75 (365TSC)	2750/4672	70/174	95/237	82/96	1,331/604	
	60		3100/5267	100/249	160/399			

## APPROXIMATE DIMENSIONS



HP	Unit	A	B	C	D	F
40 (324TSC)	in	33.38	5.25	10.50	9.50	12.50
	mm	848	133	267	241	318
50 (326TSC)	in	33.38	5.25	12.00	9.50	12.50
	mm	848	133	305	241	318
60 (365TSC)	in	35.00	5.88	11.25	10.50	14.00
	mm	889	149	286	241	356
75 (365TSC)	in	35.00	5.88	12.25	10.50	14.00
	mm	889	149	311	241	356

### Available Options

Republic Centrifugal Blowers are made to order, and can be customized to fit almost any application. Many common options and accessories are listed below. For additional options, please contact Republic or your local distributor.

#### Advantages

- 40-75 Horsepower – up to 16,000 rpm
- 20 Groove belt
- Hybrid ceramic ball bearings
- Labyrinth seals on both ends of the shaft
- Easy to remove bearing/impeller housing for quick replacement
- Precision balanced shaft/impeller assemblies
- Stainless steel blower pulley, zinc plated steel motor pulley, aluminum blower housing
- 6061 T6 aluminum impeller
- Bearing housing is steel construction for extra rigidity
- Operational with all types of motors- washdown, explosion proof, high efficiency and hydraulic
- 100% Operational performance and vibration tested
- One year warranty

#### Options

- Hard anodized blower housing and impeller
- Inlet and outlet flange
- Thermocouples

#### Accessories

- Enclosures for noise control
- Exhaust silencer
- Starter panel
- Variable frequency drive

