

***DAMAC***  

---

**TENORA**

# DAMAC

## LIVE THE LUXURY

DAMAC Properties has been at the forefront of the Middle East's luxury real estate market since 2002, delivering award-winning residential, commercial and leisure properties across the region, including the UAE, Saudi Arabia, Qatar, Jordan, Lebanon, and Oman, as well as the United Kingdom. Since then, the Company has delivered over 27,400 homes, with a development portfolio of more than 35,000 at various stages of planning and progress.

Joining forces with some of the world's most eminent fashion and lifestyle brands, DAMAC has brought new and exciting living concepts to the market in collaborations that include a golf course by Tiger Woods Design, managed by The Trump Organization, and luxury homes in association with Versace, Fendi, Just Cavalli, Paramount Hotels & Resorts and Radisson Hotel Group. With a consistent vision, and strong momentum, DAMAC Properties is building the next generation of Middle Eastern luxury living.

DAMAC places a great emphasis on philanthropy and corporate social responsibility. As such, the Hussain Sajwani DAMAC Foundation, a joint initiative between DAMAC Group and its Chairman, Hussain Sajwani, is supporting the One Million Arab Coders Initiative. The programme was launched by Vice President and Prime Minister of the UAE, and Ruler of Dubai, His Highness Sheikh Mohammed bin Rashid Al Maktoum, and is focused on creating an empowered society through learning and skills development.

\*30th September 2019.

YOUR KEYS TO  
**DUBAI SOUTH NOW**



## DUBAI SOUTH THE CITY OF YOU

A 145-square-kilometre master-planned city and host to the first World Expo in the Middle East, Dubai South is set to become one of the world's most desirable destinations. A city based on the happiness of the individual, Dubai South aims to change the fundamental concept of a community and its purpose. Launched as a Government of Dubai project in 2006, it is the home of the world's largest airport in the making - Al Maktoum International - and a host of global landmark events.



# DUBAI SOUTH

## INSPIRING HAPPINESS AND CREATIVITY

Dubai South is the emirate's flagship urban project designed to make business easier than anywhere else in the world, which includes being an appealing place to live, work and invest. The economic Free Zones of Dubai South will empower business and entrepreneurship, while a mix of accommodation will provide an unparalleled quality of life.



# CREATING 500,000 JOBS



DEDICATED LOGISTICS CORRIDOR CONNECTING  
JEBEL ALI PORT AND DUBAI SOUTH



## PROJECTED TO SUSTAIN A POPULATION OF A MILLION



- Personal income tax exemption
- Import and export tax exemption
- Foreign ownership
- Repatriation of capital profits

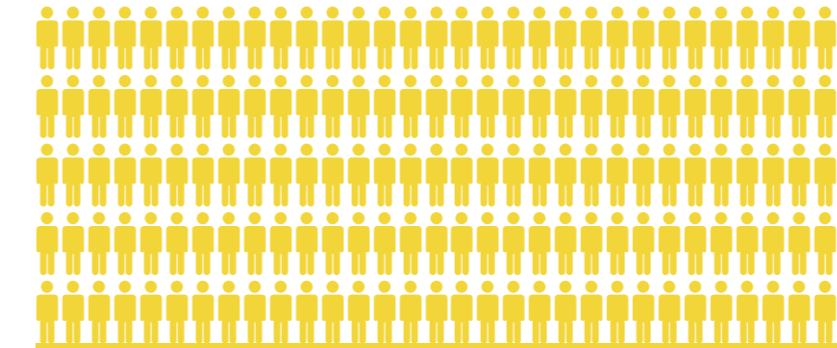


## 200,000

SQUARE METRES OF FLEXIBLE OFFICE SPACE

# AL MAKTOUM INTERNATIONAL AIRPORT

Built for the future, Al Maktoum International Airport can accommodate 26 million passengers and 16 million tonnes of cargo annually. With 64 aircraft stands, a state-of-the-art 92-metre air traffic control tower, five parallel runways and a host of other cutting edge features, it will be the world's first ever aerotropolis.



**26 MILLION**

PASSENGERS  
CURRENT ANNUAL CAPACITY

AFTER ITS EXPANSION COMPLETION IN 2026  
AL MAKTOUM WILL BE ABLE TO HANDLE:



**16 MILLION**  
TONNES CARGO



**240 MILLION**  
PASSENGERS

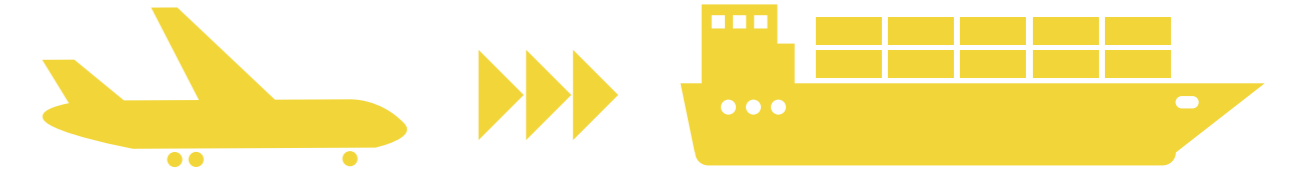


**240 MILLION**  
BAGS

Source: [www.dubaisouth.ae](http://www.dubaisouth.ae)

## 4 HOURS AIR-SEA CONNECTIVITY

ACHIEVABLE BETWEEN JEBEL ALI PORT AND AL MAKTOUM INTERNATIONAL AIRPORT



## THE REGION'S FIRST INTEGRATED MULTI-MODAL PLATFORM



# DUBAI METRO ROUTE 2020

The Roads and Transport Authority (RTA) project to extend the Dubai Metro by 14.5 kilometres, branching out from Nakheel Harbour and Tower station to the Expo 2020 site in Dubai South is now underway. This means Tenora will let you stay connected to Dubai city with a dedicated metro line, and to the world through Al Maktoum International Airport. The much anticipated extension of Dubai Metro's Red Line, named 'Route 2020', is expected to link the Etihad Rail as well. Route 2020 will offer safe and smooth mobility to the residents of Dubai South, providing a vital transit corridor linking various Dubai districts.

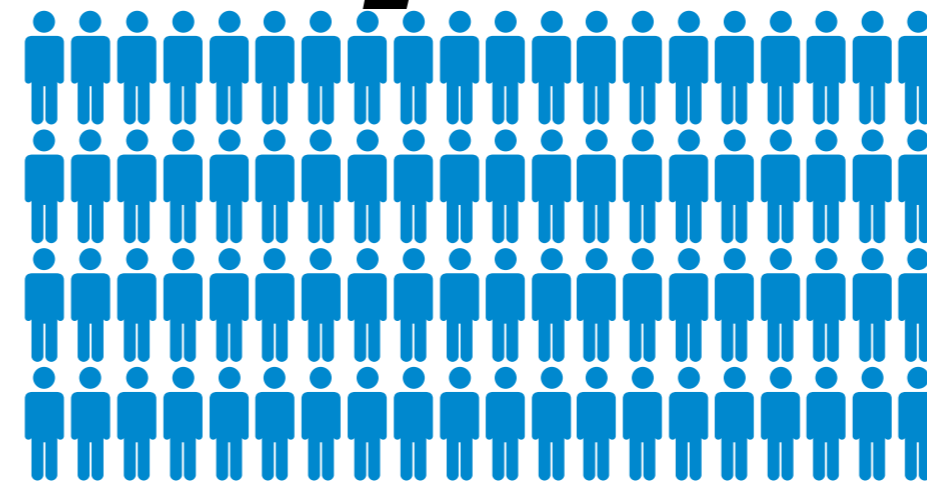
But this is just part of the story. Three new lines are planned, which in addition to the existing ones, will span 421 kilometres by 2030.



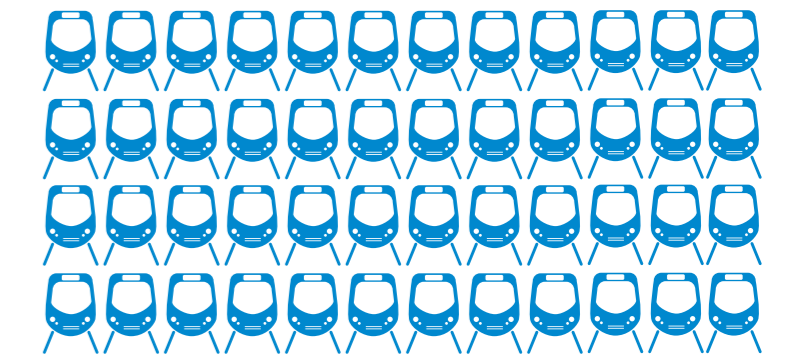
## ROUTE 2020

WILL BE A 15KM EXTENSION TO  
THE RED LINE, INCLUDING  
7 NEW STATIONS

# 75,000



VISITORS  
EXPECTED  
TO ARRIVE  
BY METRO  
DURING  
EXPO 2020



DUBAI METRO IS THE  
WORLD'S LONGEST  
DRIVERLESS SINGLE  
METRO LINE

PUBLIC TRANSPORT  
IS PLANNED  
TO BE ABLE TO  
CARRY 30% OF THE  
POPULATION  
BY 2030

# WORLD EXPO 2020

As the site for Expo 2020, Dubai South will bring its unrivalled connectivity, superb logistics and world-class infrastructure into global focus. This ground-breaking new master development will give further credence to Dubai's leading position as a logistics and trading hub, poised to deliver a World Expo that will inspire all who experience it, and leave a valuable legacy too.



**192**  
PARTICIPATING  
COUNTRIES

**25**  
MILLION  
VISITORS EXPECTED

**70%**  
VISITORS FROM  
OVERSEAS

**905,200**  
FULL-TIME  
EQUIVALENT JOB-YEARS  
FROM 2013-2031

**AED**  
**122.6**  
**BILLION**  
ECONOMIC BOOST  
FROM 2013-2031

**1.5%**  
EXPO CONTRIBUTION  
TO UAE GDP FROM  
20 OCTOBER 2020  
- 10 APRIL 2021

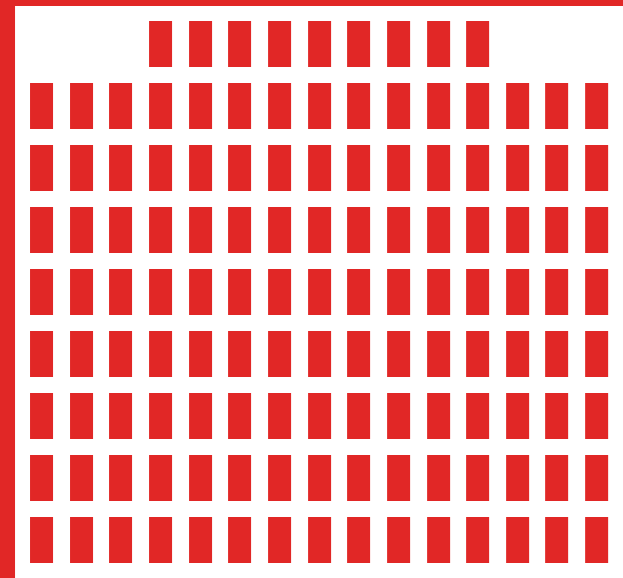
## THE EMERGING FACE OF DUBAI

Tenora is strategically located at the heart of Dubai South. In close proximity to the nerve centre of the Expo 2020 site, the world's largest aviation hub and host of first-class facilities, it is a multimodal logistics platform, providing direct access to Al Maktoum International Airport, Jebel Ali Port and Dubai Metro. Three major roads: Sheikh Mohammed bin Zayed Road (E311), Sheikh Zayed Road (E11) and the Emirates Road (E611) help you stay connected to the city.

## FIRST MOVERS' ADVANTAGE







# TENORA

FULLY FURNISHED  
LUXURY APARTMENTS  
THAT MEAN ALL  
YOU HAVE TO DO IS ARRIVE

**READY  
TO MOVE IN**

START EARNING  
EARLY RETURNS  
**NOW** WITH THE  
BUILD UP TOWARDS  
EXPO 2020 DUBAI



# WELCOME HOME

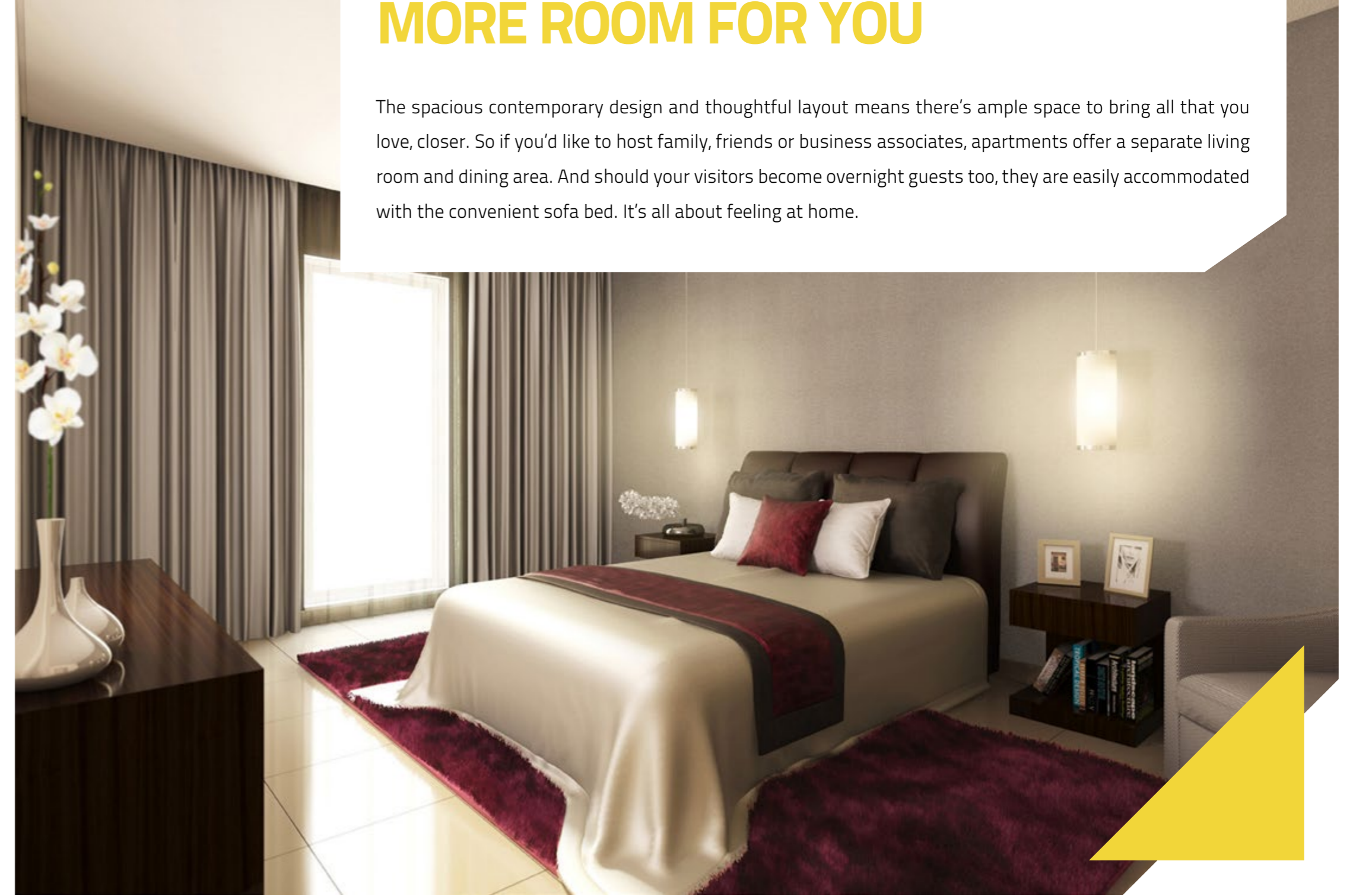
The inviting lobby sets the scene for your arrival at Tenora, which offers a collection of studios, along with one and two bedroom apartments from which to choose. Modern and bright, the interior design is practical, yet supremely comfortable.





## MORE ROOM FOR YOU

The spacious contemporary design and thoughtful layout means there's ample space to bring all that you love, closer. So if you'd like to host family, friends or business associates, apartments offer a separate living room and dining area. And should your visitors become overnight guests too, they are easily accommodated with the convenient sofa bed. It's all about feeling at home.



## LIVING ROOM BY DAY

A comfortable space where you can relax and have friends and family over.



## BEDROOM BY NIGHT

When friends and family turn into overnight guests, your sofa turns into a comfortable bed.



## YOU'RE IN CONTROL

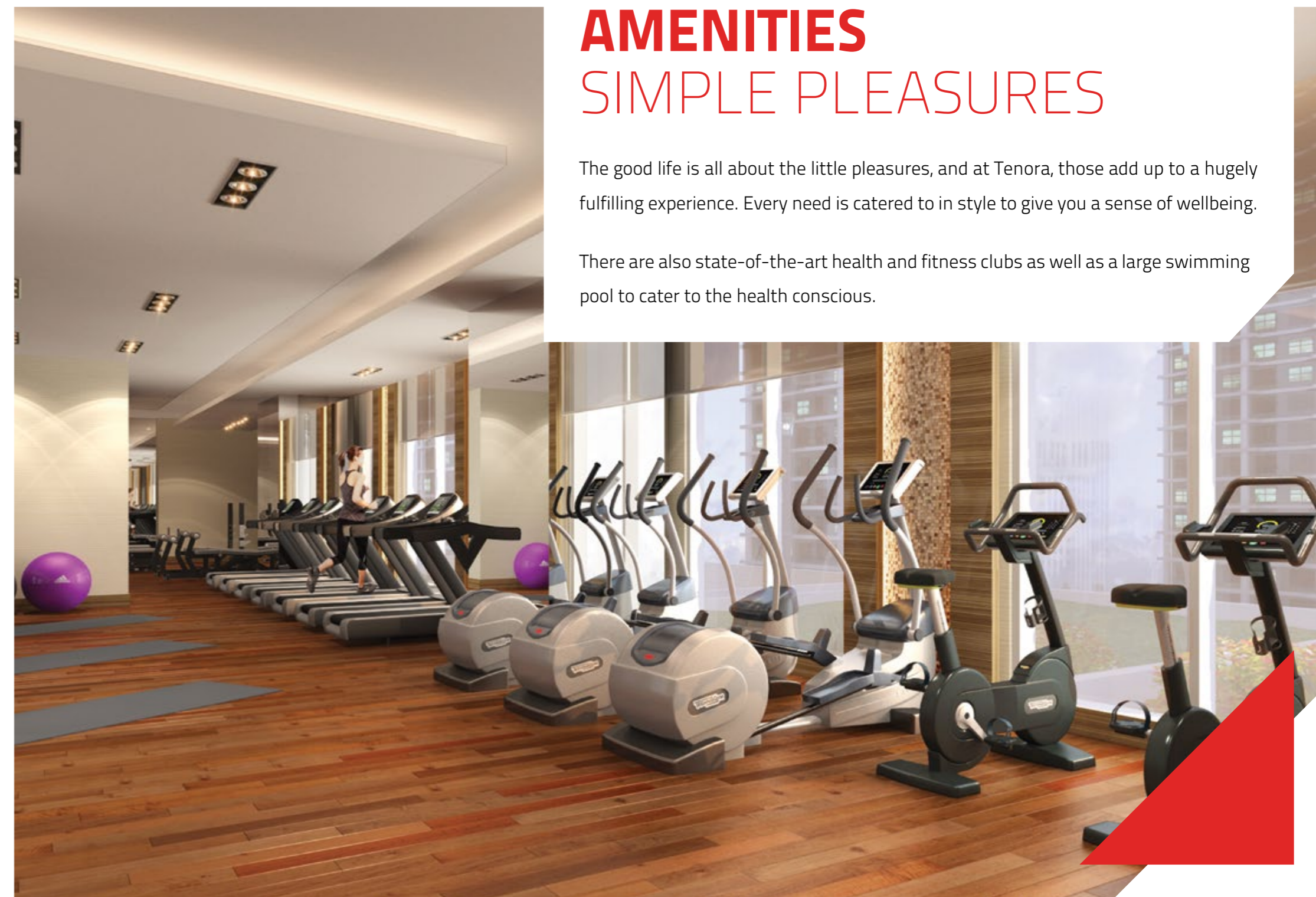
Apartments feature a fitted kitchen equipped with washer, dryer, oven, refrigerator and microwave, so you can get all your daily chores completed in your own time!



## AMENITIES SIMPLE PLEASURES

The good life is all about the little pleasures, and at Tenora, those add up to a hugely fulfilling experience. Every need is catered to in style to give you a sense of wellbeing.

There are also state-of-the-art health and fitness clubs as well as a large swimming pool to cater to the health conscious.



# TENORA

## TYPICAL FLOOR PLANS

### TYPICAL FLOOR PLAN LEVEL 1



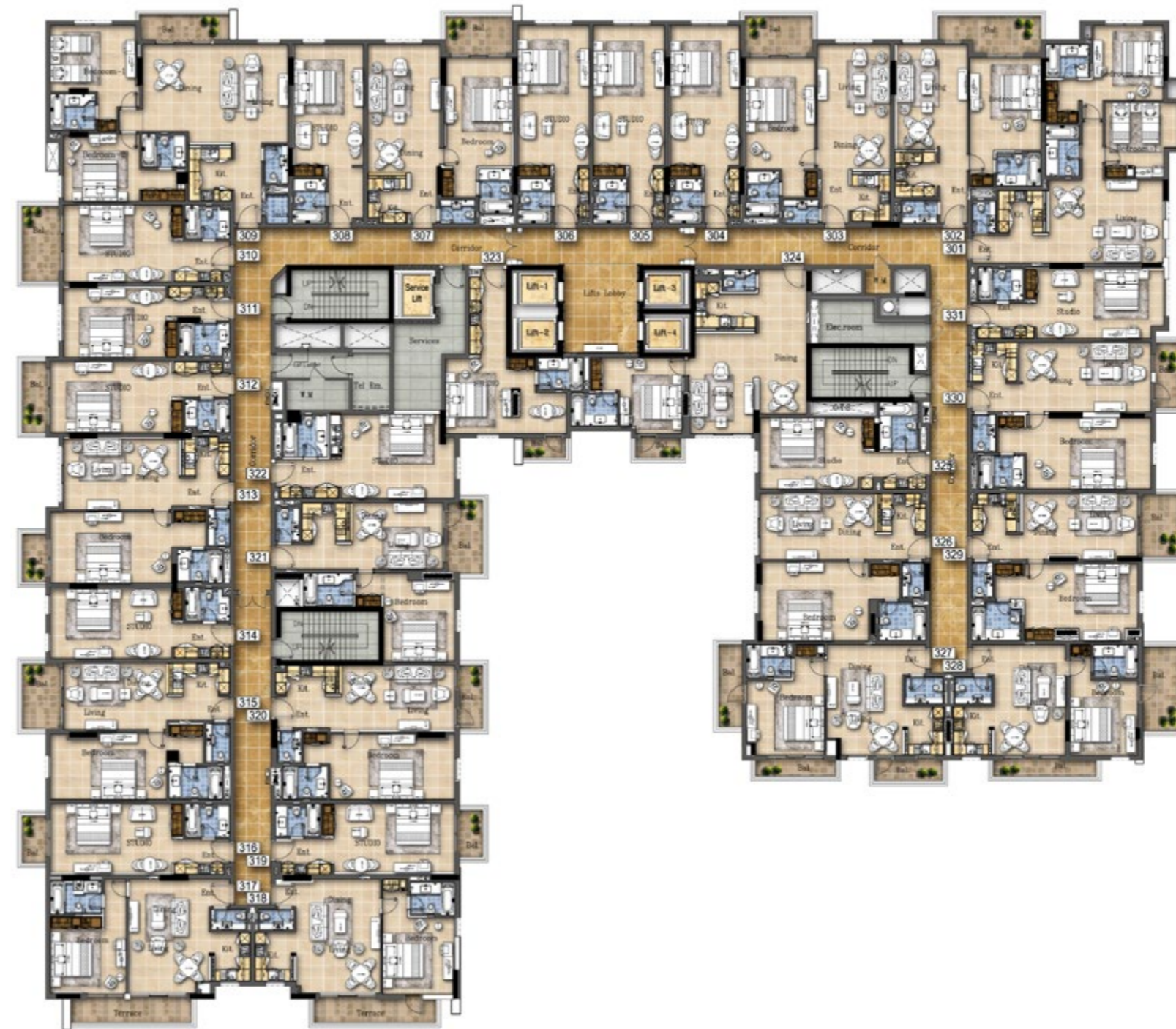
Disclaimer: All pictures, plans, layouts, information, data and details included in this brochure are indicative only and may change at any time up to the final 'as built' status in accordance with final designs of the project, regulatory approvals and planning permissions.

## TYPICAL FLOOR PLAN LEVEL 2



Disclaimer: All pictures, plans, layouts, information, data and details included in this brochure are indicative only and may change at any time up to the final 'as built' status in accordance with final designs of the project, regulatory approvals and planning permissions.

## TYPICAL FLOOR PLAN LEVEL 3



Disclaimer: All pictures, plans, layouts, information, data and details included in this brochure are indicative only and may change at any time up to the final 'as built' status in accordance with final designs of the project, regulatory approvals and planning permissions.

## TYPICAL FLOOR PLAN LEVEL 4



Disclaimer: All pictures, plans, layouts, information, data and details included in this brochure are indicative only and may change at any time up to the final 'as built' status in accordance with final designs of the project, regulatory approvals and planning permissions.

## TYPICAL FLOOR PLAN LEVEL 5



Disclaimer: All pictures, plans, layouts, information, data and details included in this brochure are indicative only and may change at any time up to the final 'as built' status in accordance with final designs of the project, regulatory approvals and planning permissions.



## TYPICAL FLOOR PLAN LEVEL 6



Disclaimer: All pictures, plans, layouts, information, data and details included in this brochure are indicative only and may change at any time up to the final 'as built' status in accordance with final designs of the project, regulatory approvals and planning permissions.

## TYPICAL FLOOR PLAN LEVEL 7



Disclaimer: All pictures, plans, layouts, information, data and details included in this brochure are indicative only and may change at any time up to the final 'as built' status in accordance with final designs of the project, regulatory approvals and planning permissions.

## TYPICAL FLOOR PLAN LEVEL 8



Disclaimer: All pictures, plans, layouts, information, data and details included in this brochure are indicative only and may change at any time up to the final 'as built' status in accordance with final designs of the project, regulatory approvals and planning permissions.

## TYPICAL FLOOR PLAN LEVEL 9



Disclaimer: All pictures, plans, layouts, information, data and details included in this brochure are indicative only and may change at any time up to the final 'as built' status in accordance with final designs of the project, regulatory approvals and planning permissions.

# LUXURY BY APPOINTMENT

Contact us at any of our offices or visit our website [damacproperties.com](http://damacproperties.com)



## UNITED ARAB EMIRATES

Tel: +971 4 301 9999  
PO Box 2195, Dubai, UAE

### Dubai

#### Park Towers

Dubai International Financial Centre  
Tel: +971 4 376 3600  
Fax: +971 4 373 1490  
Email: [dubai@damacgroup.com](mailto:dubai@damacgroup.com)

#### DAMAC Hills Sales Centre Gate 1

Sheikh Zayed bin Hamdan  
Al Nahyan Street  
Tel: +971 4 818 3300  
Email: [dubai@damacgroup.com](mailto:dubai@damacgroup.com)

## KUWAIT

Al Bawader Real Estate Broker WLL  
Office 42A, 12th Floor  
Panasonic Tower, Building 6, Block 14  
Al Qibla Street, Kuwait City  
Tel: +965 2249 8727  
Fax: +965 2245 6766  
Email: [kuwait@damacgroup.com](mailto:kuwait@damacgroup.com)

## LEBANON

DAMAC Properties Lebanon SAL  
Unit 1801, 18th Floor  
DAMAC Tower  
Omar Daouk Street  
Mina El Hosn, Beirut Central District  
Tel: +961 81 647 200  
Email: [beirut@damacgroup.com](mailto:beirut@damacgroup.com)

## KINGDOM OF SAUDI ARABIA

### Riyadh

DAMAC Towers Riyadh  
South Tower  
Olaya District  
King Fahd Road  
PO Box 102460  
Tel: +966 11 835 0300  
Email: [ksa@damacgroup.com](mailto:ksa@damacgroup.com)

### Jeddah

Al Jawharah Tower  
Next to Rosewood Jeddah Hotel  
Said Ibn Amir, Ash Shati  
Tel: +966 12 233 0210  
Fax: +966 12 284 5446  
Email: [ksa@damacgroup.com](mailto:ksa@damacgroup.com)

## TURKEY

Zorlu Centre, Floor T0, No. 23  
Levazım Mahallesi – Beşiktaş, Istanbul  
Tel: +90 850 203 9915  
Email: [turkey@damacgroup.com](mailto:turkey@damacgroup.com)

## QATAR

Building 90, New Solta Area  
Ali bin Abi Talib Street  
Next to Omar bin Al Khattab Health Centre  
Tel: +974 44 666 986  
Fax: +974 44 554 576  
Email: [doha@damacgroup.com](mailto:doha@damacgroup.com)

## JORDAN

Al Istithmar Street  
Abdali Project, Amman  
Opposite Abdali Mall Gate #1  
Tel: +962 6 510 7000  
Fax: +962 6 565 7896  
Email: [amman@damacgroup.com](mailto:amman@damacgroup.com)

## UNITED KINGDOM

4th Floor, 100 Brompton Road  
Opposite Harrods  
Knightsbridge, London  
SW3 1ER, United Kingdom  
Tel: +44 (0) 207 590 8050  
Email: [sales@damactower.co.uk](mailto:sales@damactower.co.uk)

## CHINA

### Beijing

Offices 203, 205, 206  
Macau Centre  
No. 8, Wangfujing East Street  
Dongcheng District, Beijing  
China, 100006  
Tel: +86 10 5989 8489

### Shanghai

Room 803  
8th Floor, Building 2  
1266 West Nanjing Road  
Jing'an District, Shanghai  
China, 200040  
Tel: +86 21 6086 1266



/DAMACPropertiesOfficial



/DAMACOfficial



/DAMACOfficial



DAMAC Properties



/DAMACOfficial

***DAMAC***  
LIVE THE LUXURY

DAMACPROPERTIES.COM