

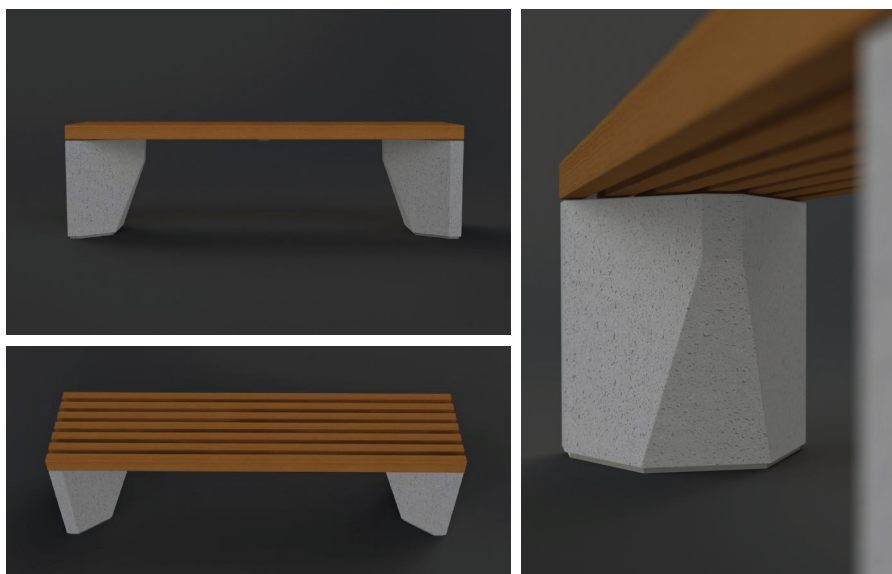


TAHU bench

without backrest

Bench TAHU is a light-looking heavy bench for demanding environments. Being bright, clear and vigorous Tahu is a perfect bench for the bus stop and lasts in the midst of the greatest migration of nations. The anti-graffiti cover and bulletproof foot keeps Tahu impeccable even at the battlefields of the gangs in the districts of concrete apartment blocks.

Design by Martin Pärn, iseasi





Tahu bench without backrest

FEATURES

The faceted concrete legs give the bench a pleasant distinction.

Concrete legs rest on EPDM rubber plates, protecting the concrete from direct contact with the ground, ensuring better durability of concrete parts. This also makes it easier to relocate the benches without damaging concrete parts.

All joints are well thought through and are technically very well finished.

Strong concrete legs ensure the stability. Total mass of 210 kg

No visible fixing materials on the top surfaces of the wooden parts to ensure a pleasing look and feel of the products.

Extery quality without compromise- harmonious design, carefully selected materials and engineering considered to the last detail.



CONSTRUCTION

The steel parts are available in hot-dip galvanized steel with powder coated finish. The hot-dip galvanizing is done according to ISO 1461:2009 standard.

The legs are made of smooth reinforced granite concrete C35/45. Environmental class: XC4, XD3, XF2/KK2. The color of the concrete is near to RAL 7047.

Concrete surfaces are covered with stain and graffiti repellent substance.



Smooth gray concrete

RAL recommendation by designer:



RAL 9002



RAL 7039



RAL 7016

WOOD

The wood selection includes double layer Osmo Natural Oil Woodstain coated thermo-treated ash, Siperian larch and tropical wood.



Thermo-treated ash OC-010



Siperian larch OC-706



Tropical wood OC-425



Tropical wood natural

INSTALLATION

Freestanding on a firm base

Material marking in product code:

a- thermo-treated ash

u- larch

t- tropical wood

tn- tropical wood, natural

Example of code use for bench with larch wood: **TAHJ200-u**

DIMENSIONS

TAHU bench, without backrest - **TAHJ200**

